

2020 HOLSTEIN SIRE CATALOGUE

U.S PROOFS – DECEMBER UPDATE



Patty Jones
CUSTOMER

CONTENTS

HOLSTEINS

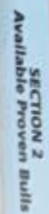
| TPI / NET MERIT | | POLLED SIRES | | SUPERIOR TYPE | | FERTILITY SIRES | |
|--------------------|---|-----------------------|---|-------------------------|----|---------------------|----|
| CEPHUS | 2 | A2P2 PP | 5 | BRADNICK | 9 | ARMANI RC | 14 |
| DAVIS | 2 | ANSWER P | 6 | BRASH | 9 | DEWARS | 14 |
| FEDORA | 2 | BARCUDA PP RED | 6 | BREWER RC | 10 | DUPLO | 14 |
| HERMES | 2 | CFP PP RC | 6 | DEMAN | 10 | EXETER | 14 |
| HOUSE | 3 | CLASH P | 7 | GOLD CHIP | 10 | FABIO | 15 |
| HOWDY | 3 | COLD P | 7 | GUTHRIE | 10 | GLAMOR | 15 |
| KONRAD | 3 | KITAMI PP RC | 7 | INNUENDO | 11 | LIBERTY P | 13 |
| MAINSTAGE | 3 | NIPIT PP RC | 5 | SECRETARIAT | 11 | SALVATORE RC | 15 |
| MOLINE | 1 | PJ PP RED | 7 | SOGNO PP RED | 11 | SAMURI | 13 |
| SANJAY | 4 | VOMEMPHIS PP | 6 | SOUNDSYSTEM | 9 | SUPERHERO | 15 |
| SIR-ROZ | 4 | | | VOPICASSO PP RDC | 11 | | |
| STALLONE | 4 | | | | | | |
| WOODFORD | 4 | | | | | | |
| YOLO | 1 | | | | | | |

DISCLAIMER: The content of this Catalogue is provided for information only. It is published with care and attention to accuracy, but Genetics Australia accepts no liability if, for any reason the information is inaccurate or out of date whether negligent or otherwise.

Limitation of Liability: Genetics Australia warrants that it has clear title to the products sold and that all semen processed in its laboratory is processed under rigid quality controls. Since Genetics Australia does not control conditions under which its products are used it does not give, and its agents and employees are forbidden to give, any warranty express or implied as to the conception rate quality or productiveness or the results which may be obtained by the use of any product sold or in connection with any techniques recommended. Genetics Australia makes no other warranty of any kind whatsoever express or implied which extends beyond the description of its products. Where so permitted the liability of Genetics Australia for breach of a condition or warranty implied by statute is limited at Genetics Australia's option to the replacement or repair of the goods or the supply of equivalent goods or the cost of replacing or repairing the goods or of acquiring equivalent goods. So far as the law permits Genetics Australia shall not be liable in any way whatsoever for any indirect or consequential loss or loss of profit.

Sexed (sorted) semen: Artificial insemination straws that Genetics Australia offers for sale as sexed (sorted) semen using Sexing Technologies proprietary technology, shall only be used for single-use artificial insemination and not for in-vitro-fertilisation or embryo transfer.

Image: Bradnick daughters, Elm Banks Holsteins.



SECTION 3
Dauntstar Brown Blue Matte

HIGH TPI/

Peak Moline

MOLINE

Positive x Medley

JSMOLINE

A22

| | | | | | | | | | |
|-------|---------------------|-----|---------|-----|---------|----------|---------|------|---------|
| BPI | 380/60% | HWI | 349/54% | ASI | 167/72% | Dtr Fert | 107/42% | RRP | \$32.00 |
| Sire: | Progenesis Positive | | | | | PTA Type | UDC | FLC | |
| Dam: | Pine-Tree Mandolin | | | | | 1.21 | 1.27 | 0.04 | |

0 dtrs 0 herds 77% rel0 dtrs 0 herds 75% rel

| | | | | | | |
|--|----------------------------------|---|-------------------------------------|-----------------------------------|--|------------------------|
| <div>BGP Yolo</div> <div>YOLO</div> <div>Bandares x Meridian</div> | <div>JSYOLO</div> <div>A22</div> | <div>BPI</div> <div>436/66%</div> | <div>HWI</div> <div>411/61%</div> | <div>ASI</div> <div>172/78%</div> | <div>Dtr Fert</div> <div>106/53%</div> | <div>RRP \$26.00</div> |
| | | <div>Sire:</div> <div>Wa-Del Yoder Bandares</div> | <div>PTA Type</div> <div>1.55</div> | <div>UDC</div> <div>2.23</div> | <div>FLC</div> <div>-0.02</div> | |
| | | <div>Dam:</div> <div>Co-Vista Atwood Desire</div> | <div>0 dtrs, 0 bands, 81% pro</div> | | | |

0 dtrs 0 herds 81% rel

0 dtrs 0 herds 81% rel

Dam,
T-Spruce
Jossette

| Health | |
|---------|------|
| PTA DPR | 0.1 |
| PL | 4.1 |
| SCE | 1.8 |
| SCR | 0.6 |
| SCS | 2.86 |

| Net Merit \$ | |
|--------------|------|
| 656 | |
| Production | |
| PTA Milk | 1456 |
| PTA Fat | 61 |
| % Fat | 0.02 |
| PTA Pro | 63 |
| % Pro | 0.06 |

| | | | | | | |
|----------------------|-----------|--|--|--|-------|-------------|
| Stature | Short | | | | 0.21 | Tall |
| Strength | Narrow | | | | -0.52 | Wide |
| Body Depth | Shallow | | | | -0.64 | Deep |
| Dairyness | Thick | | | | 0.47 | Angular |
| Rump (side View) | High Pins | | | | 0.12 | Sloped |
| Rump Width | Narrow | | | | -0.78 | Wide |
| Rear Leg (Side View) | Posty | | | | -0.55 | Sickled |
| Rear Leg (Rear View) | Hock In | | | | -1.11 | Straight |
| Foot Angle | Low Angle | | | | 0.27 | Steep Angle |
| Foot & Leg Score | Low | | | | -0.45 | High |
| Fore Udder | Loose | | | | 0.56 | Strong |
| Rear Udder Height | Low | | | | 2.42 | High |
| Rear Udder Width | Narrow | | | | 1.92 | Wide |
| Suspensory Ligament | Weak | | | | 0.68 | Strong |
| Udder Depth | Deep | | | | 0.31 | Shallow |
| Tests (Front View) | Wide | | | | -0.05 | Close |
| Tests (Rear View) | Wide | | | | 0.77 | Close |
| Test Length | Short | | | | 0.57 | Long |

DAVIS

| Health | |
|---------|------|
| PTA DPR | 0.0 |
| PL | 4.2 |
| SCE | 1.8 |
| SCR | - |
| SCS | 2.78 |

| Net Merit \$ | |
|--------------|------|
| 621 | |
| Production | |
| PTA Milk | 721 |
| PTA Fat | 79 |
| % Fat | 0.18 |
| PTA Pro | 40 |
| % Pro | 0.06 |

| Attribute | Category | Score | Target | Unit |
|----------------------|-----------|-------|--------|-------------|
| Stature | Short | 1.98 | 2.00 | Tall |
| Strength | Narrow | 1.02 | 1.00 | Wide |
| Body Depth | Shallow | 1.28 | 1.25 | Deep |
| Dairyness | Thick | 2.07 | 2.00 | Angular |
| Rump (side View) | High Pins | 0.72 | 0.75 | Sloped |
| Rump Width | Narrow | 0.77 | 0.75 | Wide |
| Rear Leg (Side View) | Posty | 0.11 | 0.125 | Sickled |
| Rear Leg (Rear View) | Hock In | 0.27 | 0.25 | Straight |
| Foot Angle | Low Angle | 0.74 | 0.75 | Steep Angle |
| Foot & Leg Score | Low | 0.66 | 0.75 | High |
| Fore Udder | Loose | 1.86 | 1.75 | Strong |
| Rear Udder Height | Low | 2.14 | 2.00 | High |
| Rear Udder Width | Narrow | 2.67 | 2.50 | Wide |
| Suspensory Ligament | Weak | 1.75 | 1.75 | Strong |
| Udder Depth | Deep | 1.54 | 1.50 | Shallow |
| Tests (Front View) | Wide | 2.01 | 2.00 | Close |
| Tests (Rear View) | Wide | 2.19 | 2.00 | Close |
| Test Length | Short | -0.65 | -0.50 | Long |

| Health | |
|---------|------|
| PTA DPR | 1.1 |
| PL | 3.0 |
| SCE | 2.4 |
| SCR | 0.5 |
| SCS | 2.63 |

| Net Merit \$ | |
|--------------|------|
| 437 | |
| Production | |
| PTA Milk | 139 |
| PTA Fat | 45 |
| % Fat | 0.14 |
| PTA Pro | 28 |
| % Pro | 0.08 |

| Attribute | Measurement | Score | Unit |
|----------------------|-------------|-------|-------------|
| Stature | Short | 1.08 | Tall |
| Strength | Narrow | 1.17 | Wide |
| Body Depth | Shallow | 0.47 | Deep |
| Dairyness | Thick | -0.29 | Angular |
| Rump (side View) | High Pins | 0.66 | Sloped |
| Rump Width | Narrow | 1.29 | Wide |
| Rear Leg (Side View) | Posty | -0.80 | Sickled |
| Rear Leg (Rear View) | Hock In | 0.52 | Straight |
| Foot Angle | Low Angle | 0.71 | Steep Angle |
| Foot & Leg Score | Low | 0.11 | High |
| Fore Udder | Loose | 1.50 | Strong |
| Rear Udder Height | Low | 1.51 | High |
| Rear Udder Width | Narrow | 2.02 | Wide |
| Suspensory Ligament | Weak | 0.74 | Strong |
| Udder Depth | Deep | 0.99 | Shallow |
| Tests (Front View) | Wide | 0.86 | Close |
| Tests (Rear View) | Wide | 0.73 | Close |
| Test Length | Short | -0.26 | Long |

| Health | |
|---------|------|
| PTA DPR | 0.0 |
| PL | 4.9 |
| SCE | 1.8 |
| SCR | - |
| SCS | 2.72 |

| Net Merit \$ | |
|--------------|------|
| 642 | |
| Production | |
| PTA Milk | 1365 |
| PTA Fat | 77 |
| % Fat | 0.08 |
| PTA Pro | 48 |
| % Pro | 0.02 |

| Attribute | Category | Score | Target | Unit |
|----------------------|-----------|-------|--------|-------------|
| Stature | Short | 1.09 | 1.10 | Tall |
| Strength | Narrow | 1.37 | 1.40 | Wide |
| Body Depth | Shallow | 1.01 | 1.05 | Deep |
| Dairyness | Thick | 0.77 | 0.80 | Angular |
| Rump (side View) | High Pins | 0.37 | 0.40 | Sloped |
| Rump Width | Narrow | 1.07 | 1.10 | Wide |
| Rear Leg (Side View) | Posty | -1.15 | -1.00 | Sickled |
| Rear Leg (Rear View) | Hock In | 0.89 | 0.90 | Straight |
| Foot Angle | Low Angle | 1.04 | 1.05 | Steep Angle |
| Foot & Leg Score | Low | 0.74 | 0.80 | High |
| Fore Udder | Loose | 2.46 | 2.50 | Strong |
| Rear Udder Height | Low | 2.22 | 2.30 | High |
| Rear Udder Width | Narrow | 3.08 | 3.10 | Wide |
| Suspensory Ligament | Weak | 0.74 | 0.80 | Strong |
| Udder Depth | Deep | 1.50 | 1.55 | Shallow |
| Tests (Front View) | Wide | 1.52 | 1.55 | Close |
| Tests (Rear View) | Wide | 1.31 | 1.35 | Close |
| Test Length | Short | -1.04 | -1.00 | Long |

Leaninghouse Helix 22137

07H012978

HOUSE

Hang-Time x Jacey

A22



| TPI | | Net Merit \$ | |
|---------|------|--------------|------|
| 2664 | | 472 | |
| Health | | Production | |
| PTA DPR | 1.7 | PTA Milk | 502 |
| PL | 3.3 | PTA Fat | 48 |
| SCE | 2.0 | % Fat | 0.10 |
| SCR | 0.5 | PTA Pro | 32 |
| SCS | 2.66 | % Pro | 0.06 |

386 dtrs 123 herds 97% rel

| | | | | | | |
|----------------------|-----------|--|--|--|-------|-------------|
| Stature | Short | | | | 0.78 | Tall |
| Strength | Narrow | | | | 0.32 | Wide |
| Body Depth | Shallow | | | | 0.37 | Deep |
| Dairyness | Thick | | | | 1.25 | Angular |
| Rump (side View) | High Pins | | | | -0.07 | Sloped |
| Rump Width | Narrow | | | | 0.50 | Wide |
| Rear Leg (Side View) | Posty | | | | -0.17 | Sickled |
| Rear Leg (Rear View) | Hock In | | | | 0.11 | Straight |
| Foot Angle | Low Angle | | | | 0.83 | Steep Angle |
| Foot & Leg Score | Low | | | | 0.97 | High |
| Fore Udder | Loose | | | | 1.77 | Strong |
| Rear Udder Height | Low | | | | 1.94 | High |
| Rear Udder Width | Narrow | | | | 2.87 | Wide |
| Suspensory Ligament | Weak | | | | 1.43 | Strong |
| Udder Depth | Deep | | | | 1.15 | Shallow |
| Teats (Front View) | Wide | | | | 1.56 | Close |
| Teats (Rear View) | Wide | | | | 1.31 | Close |
| Test Length | Short | | | | -1.46 | Long |

115 dtrs 51 herds 93% rel

Pine-Tree Legacy Howdy

7H015246

HOWDY

Legacy x Modesty

A22



| TPI | | Net Merit \$ | |
|---------|------|--------------|------|
| 2851 | | 758 | |
| Health | | Production | |
| PTA DPR | 1.1 | PTA Milk | 208 |
| PL | 6.2 | PTA Fat | 90 |
| SCE | 1.9 | % Fat | 0.29 |
| SCR | - | PTA Pro | 30 |
| SCS | 2.71 | % Pro | 0.08 |

0 dtrs 0 herds 78% rel

| | | | | | | |
|----------------------|-----------|--|--|--|-------|-------------|
| Stature | Short | | | | -0.36 | Tall |
| Strength | Narrow | | | | -1.09 | Wide |
| Body Depth | Shallow | | | | -0.73 | Deep |
| Dairyness | Thick | | | | 0.83 | Angular |
| Rump (side View) | High Pins | | | | 0.03 | Sloped |
| Rump Width | Narrow | | | | -0.32 | Wide |
| Rear Leg (Side View) | Posty | | | | 0.84 | Sickled |
| Rear Leg (Rear View) | Hock In | | | | -0.96 | Straight |
| Foot Angle | Low Angle | | | | -0.44 | Steep Angle |
| Foot & Leg Score | Low | | | | -0.14 | High |
| Fore Udder | Loose | | | | 1.59 | Strong |
| Rear Udder Height | Low | | | | 1.76 | High |
| Rear Udder Width | Narrow | | | | 1.55 | Wide |
| Suspensory Ligament | Weak | | | | 0.93 | Strong |
| Udder Depth | Deep | | | | 1.40 | Shallow |
| Teats (Front View) | Wide | | | | 1.21 | Close |
| Teats (Rear View) | Wide | | | | 1.59 | Close |
| Test Length | Short | | | | -0.50 | Long |

0 dtrs 0 herds 77% rel

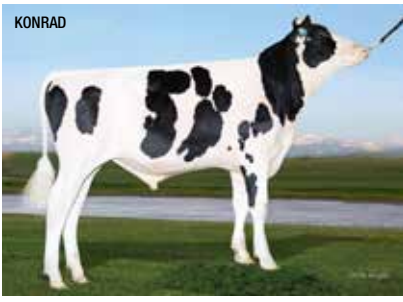
Peak Konrad

JSKONRAD

KONRAD

AltaHotjob x Jedi

A12



| TPI | | Net Merit \$ | |
|---------|------|--------------|------|
| 2847 | | 626 | |
| Health | | Production | |
| PTA DPR | 0.6 | PTA Milk | 1029 |
| PL | 4.9 | PTA Fat | 58 |
| SCE | 1.9 | % Fat | 0.06 |
| SCR | - | PTA Pro | 51 |
| SCS | 2.83 | % Pro | 0.07 |

0 dtrs 0 herds 76% rel

| | | | | | | |
|----------------------|-----------|--|--|--|-------|-------------|
| Stature | Short | | | | 2.09 | Tall |
| Strength | Narrow | | | | 1.37 | Wide |
| Body Depth | Shallow | | | | 1.17 | Deep |
| Dairyness | Thick | | | | 1.00 | Angular |
| Rump (side View) | High Pins | | | | -0.25 | Sloped |
| Rump Width | Narrow | | | | 1.17 | Wide |
| Rear Leg (Side View) | Posty | | | | -1.08 | Sickled |
| Rear Leg (Rear View) | Hock In | | | | 0.51 | Straight |
| Foot Angle | Low Angle | | | | 1.57 | Steep Angle |
| Foot & Leg Score | Low | | | | 0.85 | High |
| Fore Udder | Loose | | | | 2.81 | Strong |
| Rear Udder Height | Low | | | | 3.02 | High |
| Rear Udder Width | Narrow | | | | 3.35 | Wide |
| Suspensory Ligament | Weak | | | | 2.09 | Strong |
| Udder Depth | Deep | | | | 2.38 | Shallow |
| Teats (Front View) | Wide | | | | 1.21 | Close |
| Teats (Rear View) | Wide | | | | 1.85 | Close |
| Test Length | Short | | | | -0.26 | Long |

0 dtrs 0 herds 75% rel

Peak Main Stage

JSMAINSTAGE

MAINSTAGE

Timberlake x Jedi

A12



| TPI | | Net Merit \$ | |
|---------|------|--------------|-------|
| 2901 | | 716 | |
| Health | | Production | |
| PTA DPR | 1.5 | PTA Milk | 1996 |
| PL | 5.8 | PTA Fat | 61 |
| SCE | 1.4 | % Fat | -0.05 |
| SCR | - | PTA Pro | 69 |
| SCS | 2.87 | % Pro | 0.02 |

0 dtrs 0 herds 76% rel

| | | | | | | |
|----------------------|-----------|--|--|--|-------|-------------|
| Stature | Short | | | | 1.25 | Tall |
| Strength | Narrow | | | | 0.86 | Wide |
| Body Depth | Shallow | | | | 1.00 | Deep |
| Dairyness | Thick | | | | 1.89 | Angular |
| Rump (side View) | High Pins | | | | 0.18 | Sloped |
| Rump Width | Narrow | | | | 1.49 | Wide |
| Rear Leg (Side View) | Posty | | | | -0.24 | Sickled |
| Rear Leg (Rear View) | Hock In | | | | -0.33 | Straight |
| Foot Angle | Low Angle | | | | 0.31 | Steep Angle |
| Foot & Leg Score | Low | | | | -0.16 | High |
| Fore Udder | Loose | | | | 1.64 | Strong |
| Rear Udder Height | Low | | | | 2.22 | High |
| Rear Udder Width | Narrow | | | | 2.82 | Wide |
| Suspensory Ligament | Weak | | | | 1.54 | Strong |
| Udder Depth | Deep | | | | 0.88 | Shallow |
| Teats (Front View) | Wide | | | | 2.14 | Close |
| Teats (Rear View) | Wide | | | | 2.14 | Close |
| Test Length | Short | | | | -0.70 | Long |

0 dtrs 0 herds 75% rel

Peak Sanjay

JSSANJAY

SANJAY

Altahtotjob x Frazzled

A22



| TPI | | Net Merit \$ | |
|---------|------|--------------|------|
| 2877 | | 660 | |
| Health | | Production | |
| PTA DPR | -0.6 | PTA Milk | 1636 |
| PL | 4.3 | PTA Fat | 67 |
| SCE | 2 | % Fat | 0.01 |
| SCR | - | PTA Pro | 59 |
| SCS | 2.88 | % Pro | 0.03 |

0 dtrs 0 herds 77% rel

| | | | | | | |
|----------------------|-----------|--|--|--|-------|-------------|
| Stature | Short | | | | 1.69 | Tail |
| Strength | Narrow | | | | 0.85 | Wide |
| Body Depth | Shallow | | | | 0.82 | Deep |
| Dairyness | Thick | | | | 1.39 | Angular |
| Rump (side View) | High Pins | | | | -0.03 | Sloped |
| Rump Width | Narrow | | | | 1.14 | Wide |
| Rear Leg (Side View) | Posty | | | | -0.07 | Sickled |
| Rear Leg (Rear View) | Hock In | | | | 1.24 | Straight |
| Foot Angle | Low Angle | | | | 1.79 | Steep Angle |
| Foot & Leg Score | Low | | | | 1.18 | High |
| Fore Udder | Loose | | | | 2.67 | Strong |
| Rear Udder Height | Low | | | | 3.36 | High |
| Rear Udder Width | Narrow | | | | 3.38 | Wide |
| Suspensory Ligament | Weak | | | | 1.60 | Strong |
| Udder Depth | Deep | | | | 1.88 | Shallow |
| Teats (Front View) | Wide | | | | 1.12 | Close |
| Teats (Rear View) | Wide | | | | 1.58 | Close |
| Test Length | Short | | | | -0.90 | Long |

Siemers Bandares Sir-Roz

14H013976

SIR-ROZ

Bandares x Lottomax

A12



| TPI | | Net Merit \$ | |
|---------|------|--------------|------|
| 2594 | | 531 | |
| Health | | Production | |
| PTA DPR | 0.9 | PTA Milk | 290 |
| PL | 4.1 | PTA Fat | 59 |
| SCE | 1.9 | % Fat | 0.17 |
| SCR | 0.6 | PTA Pro | 25 |
| SCS | 2.86 | % Pro | 0.06 |

16 dtrs 8 herds 84% rel

| | | | | | | |
|----------------------|-----------|--|--|--|-------|-------------|
| Stature | Short | | | | 0.37 | Tail |
| Strength | Narrow | | | | 0.00 | Wide |
| Body Depth | Shallow | | | | -0.35 | Deep |
| Dairyness | Thick | | | | -0.31 | Angular |
| Rump (side View) | High Pins | | | | 0.20 | Sloped |
| Rump Width | Narrow | | | | 0.25 | Wide |
| Rear Leg (Side View) | Posty | | | | 0.45 | Sickled |
| Rear Leg (Rear View) | Hock In | | | | 0.22 | Straight |
| Foot Angle | Low Angle | | | | 0.15 | Steep Angle |
| Foot & Leg Score | Low | | | | 0.18 | High |
| Fore Udder | Loose | | | | 1.59 | Strong |
| Rear Udder Height | Low | | | | 1.32 | High |
| Rear Udder Width | Narrow | | | | 1.11 | Wide |
| Suspensory Ligament | Weak | | | | 0.89 | Strong |
| Udder Depth | Deep | | | | 1.37 | Shallow |
| Teats (Front View) | Wide | | | | 1.01 | Close |
| Teats (Rear View) | Wide | | | | 1.20 | Close |
| Test Length | Short | | | | -1.18 | Long |

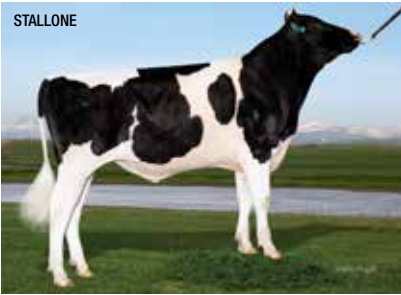
Peak Stallone

JSSTALLONE

STALLONE

Altahtotjob x Frazzled

A22



| TPI | | Net Merit \$ | |
|---------|------|--------------|------|
| 2887 | | 695 | |
| Health | | Production | |
| PTA DPR | 0.2 | PTA Milk | 935 |
| PL | 5.4 | PTA Fat | 73 |
| SCE | 1.8 | % Fat | 0.13 |
| SCR | - | PTA Pro | 41 |
| SCS | 2.86 | % Pro | 0.04 |

0 dtrs 0 herds 77% rel

| | | | | | | |
|----------------------|-----------|--|--|--|-------|-------------|
| Stature | Short | | | | 0.69 | Tail |
| Strength | Narrow | | | | 0.24 | Wide |
| Body Depth | Shallow | | | | 0.15 | Deep |
| Dairyness | Thick | | | | 0.61 | Angular |
| Rump (side View) | High Pins | | | | -1.15 | Sloped |
| Rump Width | Narrow | | | | 0.25 | Wide |
| Rear Leg (Side View) | Posty | | | | 0.48 | Sickled |
| Rear Leg (Rear View) | Hock In | | | | 1.77 | Straight |
| Foot Angle | Low Angle | | | | 1.45 | Steep Angle |
| Foot & Leg Score | Low | | | | 1.63 | High |
| Fore Udder | Loose | | | | 3.09 | Strong |
| Rear Udder Height | Low | | | | 2.68 | High |
| Rear Udder Width | Narrow | | | | 2.35 | Wide |
| Suspensory Ligament | Weak | | | | 1.20 | Strong |
| Udder Depth | Deep | | | | 2.47 | Shallow |
| Teats (Front View) | Wide | | | | 0.84 | Close |
| Teats (Rear View) | Wide | | | | 1.18 | Close |
| Test Length | Short | | | | -0.87 | Long |

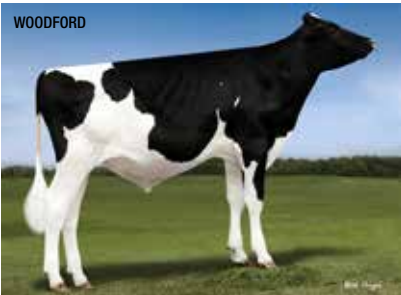
Midas-Touch Woodford

JSWOODFORD

WOODFORD

Bourbon x Rubicon

A22



| TPI | | Net Merit \$ | |
|---------|------|--------------|------|
| 2620 | | 520 | |
| Health | | Production | |
| PTA DPR | -1.4 | PTA Milk | 1445 |
| PL | 3.0 | PTA Fat | 67 |
| SCE | 1.9 | % Fat | 0.04 |
| SCR | 1.3 | PTA Pro | 46 |
| SCS | 2.84 | % Pro | 0.00 |

0 dtrs 0 herds 80% rel

| | | | | | | |
|----------------------|-----------|--|--|--|-------|-------------|
| Stature | Short | | | | 1.15 | Tail |
| Strength | Narrow | | | | 0.77 | Wide |
| Body Depth | Shallow | | | | 0.90 | Deep |
| Dairyness | Thick | | | | 1.46 | Angular |
| Rump (side View) | High Pins | | | | -0.26 | Sloped |
| Rump Width | Narrow | | | | -0.18 | Wide |
| Rear Leg (Side View) | Posty | | | | -0.18 | Sickled |
| Rear Leg (Rear View) | Hock In | | | | 0.61 | Straight |
| Foot Angle | Low Angle | | | | 0.83 | Steep Angle |
| Foot & Leg Score | Low | | | | 1.01 | High |
| Fore Udder | Loose | | | | 1.16 | Strong |
| Rear Udder Height | Low | | | | 1.73 | High |
| Rear Udder Width | Narrow | | | | 2.60 | Wide |
| Suspensory Ligament | Weak | | | | 1.65 | Strong |
| Udder Depth | Deep | | | | 0.50 | Shallow |
| Teats (Front View) | Wide | | | | 1.47 | Close |
| Teats (Rear View) | Wide | | | | 2.08 | Close |
| Test Length | Short | | | | -0.33 | Long |

POLLED SIRES

Vogue A2P2 PP

A2P2 PP

Luster x Duke

A22

BPI

432/59%

HWI

384/53%

ASI

195/72%

Dtr Fert

108/40%

RRP \$32.00

Sire: Cherry-Lily Zip Luster P

Dam: Silverridge Duke Elsa VG85

PTA Type

2.31

UDC

1.84

FLC

0.59

0 dtrs 0 herds 76% rel



Dam,
Silverridge
Duke Elsa P

Patricia Smith

TPI

2627

Net Merit \$

447

Health

PTA DPR -1.1

PL 0.8

SCE 2.1

SCR -

SCS 2.83

Production

PTA Milk 257

PTA Fat 77

% Fat 0.24

PTA Pro 29

% Pro 0.07

0 dtrs 0 herds 77% rel

| | | | | | |
|----------------------|-----------|--|--|------|-------------|
| Stature | Short | | | 2.11 | Tail |
| Strength | Narrow | | | 1.54 | Wide |
| Body Depth | Shallow | | | 1.47 | Deep |
| Dairyness | Thick | | | 1.54 | Angular |
| Rump (side View) | High Pins | | | 1.97 | Sloped |
| Rump Width | Narrow | | | 2.00 | Wide |
| Rear Leg (Side View) | Posty | | | 0.20 | Sickled |
| Rear Leg (Rear View) | Hock In | | | 0.67 | Straight |
| Foot Angle | Low Angle | | | 0.97 | Steep Angle |
| Foot & Leg Score | Low | | | 1.08 | High |
| Fore Udder | Loose | | | 2.45 | Strong |
| Rear Udder Height | Low | | | 2.64 | High |
| Rear Udder Width | Narrow | | | 2.66 | Wide |
| Suspensory Ligament | Weak | | | 0.84 | Strong |
| Udder Depth | Deep | | | 1.85 | Shallow |
| Teats (Front View) | Wide | | | 0.82 | Close |
| Teats (Rear View) | Wide | | | 0.82 | Close |
| Test Length | Short | | | 0.19 | Long |

Vogue Nipit PP

NIPIT PP RC

Hotspot x Splendid

A22

BPI

443/60%

HWI

433/54%

ASI

210/73%

Dtr Fert

111/40%

RRP \$32.00

SEXED \$65.00

Sire: Wil Hotspot P

Dam: Vogue Splendid Samara PP VG86

PTA Type

1.79

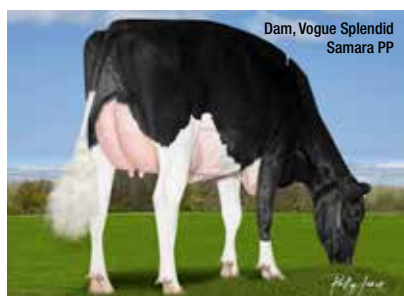
UDC

1.47

FLC

0.58

0 dtrs 0 herds 74% rel



Dam, Vogue Splendid
Samara PP

Patricia Smith

TPI

2709

Net Merit \$

543

Health

PTA DPR -0.4

PL 1.6

SCE 2.6

SCR -

SCS 3.06

Production

PTA Milk 638

PTA Fat 76

% Fat 0.18

PTA Pro 50

% Pro 0.11

0 dtrs 0 herds 77% rel

| | | | | | |
|----------------------|-----------|--|--|------|-------------|
| Stature | Short | | | 2.22 | Tail |
| Strength | Narrow | | | 0.28 | Wide |
| Body Depth | Shallow | | | 0.92 | Deep |
| Dairyness | Thick | | | 2.09 | Angular |
| Rump (side View) | High Pins | | | 0.63 | Sloped |
| Rump Width | Narrow | | | 1.21 | Wide |
| Rear Leg (Side View) | Posty | | | 0.40 | Sickled |
| Rear Leg (Rear View) | Hock In | | | 0.23 | Straight |
| Foot Angle | Low Angle | | | 0.72 | Steep Angle |
| Foot & Leg Score | Low | | | 1.25 | High |
| Fore Udder | Loose | | | 2.01 | Strong |
| Rear Udder Height | Low | | | 1.96 | High |
| Rear Udder Width | Narrow | | | 1.87 | Wide |
| Suspensory Ligament | Weak | | | 0.96 | Strong |
| Udder Depth | Deep | | | 2.36 | Shallow |
| Teats (Front View) | Wide | | | 0.60 | Close |
| Teats (Rear View) | Wide | | | 0.63 | Close |
| Test Length | Short | | | 0.39 | Long |

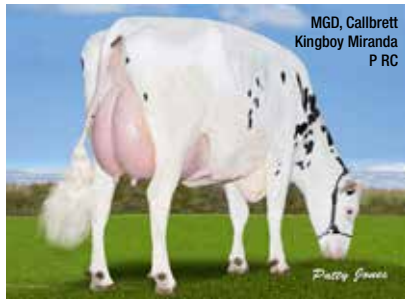
Vogue Memphis PP

VOMEMPHIS PP

Drastic x Loyola

A22

VOMEMPHIS



| TPI | |
|---------|------|
| 2351 | |
| Health | |
| PTA DPR | -0.1 |
| PL | 0.6 |
| SCE | 1.3 |
| SCR | - |
| SCS | 3.06 |

| Net Merit \$ | |
|--------------|------|
| 227 | |
| Production | |
| PTA Milk | -38 |
| PTA Fat | 18 |
| % Fat | 0.07 |
| PTA Pro | 12 |
| % Pro | 0.05 |

0 dtrs 0 herds 77% rel

| | | | | | | |
|----------------------|-----------|--|--|--|-------|-------------|
| Stature | Short | | | | 0.57 | Tall |
| Strength | Narrow | | | | 0.33 | Wide |
| Body Depth | Shallow | | | | 0.09 | Deep |
| Dairyness | Thick | | | | 0.30 | Angular |
| Rump (side View) | High Pins | | | | -0.52 | Sloped |
| Rump Width | Narrow | | | | 1.39 | Wide |
| Rear Leg (Side View) | Posty | | | | -0.61 | Sickled |
| Rear Leg (Rear View) | Hock In | | | | 0.79 | Straight |
| Foot Angle | Low Angle | | | | 1.19 | Steep Angle |
| Foot & Leg Score | Low | | | | 1.08 | High |
| Fore Udder | Loose | | | | 3.20 | Strong |
| Rear Udder Height | Low | | | | 3.36 | High |
| Rear Udder Width | Narrow | | | | 2.47 | Wide |
| Suspensory Ligament | Weak | | | | 0.83 | Strong |
| Udder Depth | Deep | | | | 2.48 | Shallow |
| Teats (Front View) | Wide | | | | 0.44 | Close |
| Teats (Rear View) | Wide | | | | 0.33 | Close |
| Teat Length | Short | | | | -0.88 | Long |

0 dtrs 0 herds 75% rel

Endco The Answer P

ANSWER P

Montross x Earnhardt

A12

JSANSWERP



| TPI | |
|---------|------|
| 2566 | |
| Health | |
| PTA DPR | -0.8 |
| PL | 2.0 |
| SCE | 1.9 |
| SCR | 0.8 |
| SCS | 3.21 |

| Net Merit \$ | |
|--------------|-------|
| 475 | |
| Production | |
| PTA Milk | 1770 |
| PTA Fat | 63 |
| % Fat | -0.02 |
| PTA Pro | 53 |
| % Pro | -0.01 |

541 dtrs 137 herds 98% rel

| | | | | | | |
|----------------------|-----------|--|--|--|-------|-------------|
| Stature | Short | | | | 0.53 | Tall |
| Strength | Narrow | | | | 0.40 | Wide |
| Body Depth | Shallow | | | | 0.38 | Deep |
| Dairyness | Thick | | | | 1.56 | Angular |
| Rump (side View) | High Pins | | | | 1.54 | Sloped |
| Rump Width | Narrow | | | | 0.43 | Wide |
| Rear Leg (Side View) | Posty | | | | -0.55 | Sickled |
| Rear Leg (Rear View) | Hock In | | | | -0.39 | Straight |
| Foot Angle | Low Angle | | | | 0.11 | Steep Angle |
| Foot & Leg Score | Low | | | | 0.17 | High |
| Fore Udder | Loose | | | | 0.47 | Strong |
| Rear Udder Height | Low | | | | 2.09 | High |
| Rear Udder Width | Narrow | | | | 3.12 | Wide |
| Suspensory Ligament | Weak | | | | 1.09 | Strong |
| Udder Depth | Deep | | | | 0.01 | Shallow |
| Teats (Front View) | Wide | | | | 0.67 | Close |
| Teats (Rear View) | Wide | | | | 0.95 | Close |
| Teat Length | Short | | | | -2.03 | Long |

149 dtrs 66 herds 95% rel

Sunquest Barcuda PP RED

BARCUDA PP RED

JAX P RC x Numero Uno

A22

7H012982



| TPI | |
|---------|------|
| 2197 | |
| Health | |
| PTA DPR | -0.2 |
| PL | 3.2 |
| SCE | 2.5 |
| SCR | 1.6 |
| SCS | 2.69 |

| Net Merit \$ | |
|--------------|-------|
| 209 | |
| Production | |
| PTA Milk | 604 |
| PTA Fat | 5 |
| % Fat | -0.06 |
| PTA Pro | 22 |
| % Pro | 0.01 |

144 dtrs 75 herds 94% rel

| | | | | | | |
|----------------------|-----------|--|--|--|-------|-------------|
| Stature | Short | | | | 0.32 | Tall |
| Strength | Narrow | | | | -0.57 | Wide |
| Body Depth | Shallow | | | | -0.32 | Deep |
| Dairyness | Thick | | | | 0.48 | Angular |
| Rump (side View) | High Pins | | | | -0.55 | Sloped |
| Rump Width | Narrow | | | | 0.57 | Wide |
| Rear Leg (Side View) | Posty | | | | 0.63 | Sickled |
| Rear Leg (Rear View) | Hock In | | | | -0.81 | Straight |
| Foot Angle | Low Angle | | | | -0.17 | Steep Angle |
| Foot & Leg Score | Low | | | | 0.06 | High |
| Fore Udder | Loose | | | | 0.18 | Strong |
| Rear Udder Height | Low | | | | 0.50 | High |
| Rear Udder Width | Narrow | | | | -0.24 | Wide |
| Suspensory Ligament | Weak | | | | -0.37 | Strong |
| Udder Depth | Deep | | | | 0.40 | Shallow |
| Teats (Front View) | Wide | | | | -0.93 | Close |
| Teats (Rear View) | Wide | | | | -0.70 | Close |
| Teat Length | Short | | | | -0.05 | Long |

26 dtrs 12 herds 86% rel

Vogue CFP PP

CFP PP RC RED

Drastic x Splendid

A22



| TPI | |
|---------|------|
| 2583 | |
| Health | |
| PTA DPR | -0.9 |
| PL | -0.5 |
| SCE | 1.9 |
| SCR | - |
| SCS | 3.00 |

| Net Merit \$ | |
|--------------|------|
| 459 | |
| Production | |
| PTA Milk | 100 |
| PTA Fat | 76 |
| % Fat | 0.26 |
| PTA Pro | 30 |
| % Pro | 0.10 |

0 dtrs 0 herds 77% rel

| | | | | | | |
|----------------------|-----------|--|--|--|-------|-------------|
| Stature | Short | | | | 2.01 | Tall |
| Strength | Narrow | | | | 0.12 | Wide |
| Body Depth | Shallow | | | | 0.46 | Deep |
| Dairyness | Thick | | | | 1.82 | Angular |
| Rump (side View) | High Pins | | | | 1.73 | Sloped |
| Rump Width | Narrow | | | | 0.97 | Wide |
| Rear Leg (Side View) | Posty | | | | 0.61 | Sickled |
| Rear Leg (Rear View) | Hock In | | | | -0.25 | Straight |
| Foot Angle | Low Angle | | | | 0.45 | Steep Angle |
| Foot & Leg Score | Low | | | | 0.71 | High |
| Fore Udder | Loose | | | | 2.14 | Strong |
| Rear Udder Height | Low | | | | 2.52 | High |
| Rear Udder Width | Narrow | | | | 2.49 | Wide |
| Suspensory Ligament | Weak | | | | 1.01 | Strong |
| Udder Depth | Deep | | | | 2.15 | Shallow |
| Teats (Front View) | Wide | | | | 1.20 | Close |
| Teats (Rear View) | Wide | | | | 1.07 | Close |
| Teat Length | Short | | | | 0.05 | Long |

0 dtrs 0 herds 75% rel

Anderstrup Clash P

CLASH P

Powerball x Bookem

A22

BPI

329/72%

HWI

303/69%

ASI

153/77%

Dtr Fert

107/75%

RRP \$20.00

Sire: View-Home Powerball P

Dam: Anderstruo Bookem Carmen EX91

PTA Type

UDC

FLC

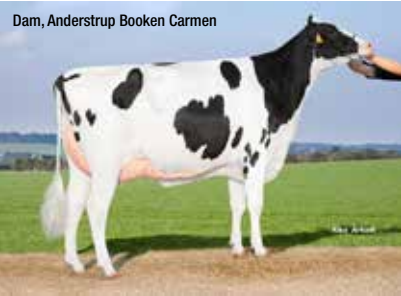
1.11

1.09

-0.55

0 dtrs 0 herds 88% rel

Dam, Anderstrup Bookem Carmen



TPI

2438

Net Merit \$

342

Health

PTA DPR

0.4

PL

1.9

SCE

1.5

SCR

-

SCS

2.90

Production

PTA Milk

885

PTA Fat

21

% Fat

-0.04

PTA Pro

42

% Pro

0.05

1818 dtrs 529 herds 90% rel

| | | | | | | |
|----------------------|-----------|--|--|--|-------|-------------|
| Stature | Short | | | | 1.89 | Tall |
| Strength | Narrow | | | | -0.47 | Wide |
| Body Depth | Shallow | | | | 0.39 | Deep |
| Dairyness | Thick | | | | 2.60 | Angular |
| Rump (side View) | High Pins | | | | 1.19 | Sloped |
| Rump Width | Narrow | | | | 1.21 | Wide |
| Rear Leg (Side View) | Posty | | | | 2.50 | Sickled |
| Rear Leg (Rear View) | Hock In | | | | -0.31 | Straight |
| Foot Angle | Low Angle | | | | -0.67 | Steep Angle |
| Foot & Leg Score | Low | | | | 0.13 | High |
| Fore Udder | Loose | | | | 1.96 | Strong |
| Rear Udder Height | Low | | | | 1.30 | High |
| Rear Udder Width | Narrow | | | | 1.55 | Wide |
| Suspensory Ligament | Weak | | | | 0.29 | Strong |
| Udder Depth | Deep | | | | 1.79 | Shallow |
| Teats (Front View) | Wide | | | | 0.77 | Close |
| Teats (Rear View) | Wide | | | | 0.05 | Close |
| Teat Length | Short | | | | -0.13 | Long |

Ernest Anthony Cold P

COLD P

Powerball x Beluga

A22

BPI

377/72%

HWI

401/66%

ASI

133/81%

Dtr Fert

112/53%

RRP \$22.00

Sire: View-Home Powerball P

Dam: Michigan Belg Polar 4957

PTA Type

UDC

FLC


1.91

1.96

0.55

80 dtrs 62 herds 85% rel

COLD P



TPI

2501

Net Merit \$

297

Health

PTA DPR

1.7

PL

0.1

SCE

2.1

SCR

-0.2

SCS

3.20

Production

PTA Milk

656

PTA Fat

33

% Fat

0.03

PTA Pro

36

% Pro

0.05

242 dtrs 161 herds 91% rel

| | | | | | | |
|----------------------|-----------|--|--|--|-------|-------------|
| Stature | Short | | | | 1.60 | Tall |
| Strength | Narrow | | | | 1.11 | Wide |
| Body Depth | Shallow | | | | 1.56 | Deep |
| Dairyness | Thick | | | | 1.68 | Angular |
| Rump (side View) | High Pins | | | | 0.26 | Sloped |
| Rump Width | Narrow | | | | 1.78 | Wide |
| Rear Leg (Side View) | Posty | | | | 1.49 | Sickled |
| Rear Leg (Rear View) | Hock In | | | | 0.60 | Straight |
| Foot Angle | Low Angle | | | | 0.79 | Steep Angle |
| Foot & Leg Score | Low | | | | 0.98 | High |
| Fore Udder | Loose | | | | 3.23 | Strong |
| Rear Udder Height | Low | | | | 2.19 | High |
| Rear Udder Width | Narrow | | | | 2.28 | Wide |
| Suspensory Ligament | Weak | | | | 0.30 | Strong |
| Udder Depth | Deep | | | | 2.26 | Shallow |
| Teats (Front View) | Wide | | | | 1.55 | Close |
| Teats (Rear View) | Wide | | | | 0.42 | Close |
| Teat Length | Short | | | | -0.10 | Long |

Wil Kitami PP

KITAMI PP RC

Hotspot x Mr Salvatore

A12

BPI

369/62%

HWI

336/55%

ASI

149/74%

Dtr Fert

107/44%

RRP \$32.00

Sire: Wil Hotspot P

Dam: Wil Kysu VG85

PTA Type

UDC

FLC


1.33

0.91

0.97

0 dtrs 0 herds 73% rel

MGD, Wilder Kysu



TPI

2622

Net Merit \$

500

Health

PTA DPR

-0.4

PL

3.6

SCE

1.5

SCR

-

SCS

2.90

Production

PTA Milk

950

PTA Fat

54

% Fat

0.06

PTA Pro

45

% Pro

0.05

0 dtrs 0 herds 76% rel

| | | | | | | |
|----------------------|-----------|--|--|--|------|-------------|
| Stature | Short | | | | 0.98 | Tall |
| Strength | Narrow | | | | 0.80 | Wide |
| Body Depth | Shallow | | | | 0.70 | Deep |
| Dairyness | Thick | | | | 0.58 | Angular |
| Rump (side View) | High Pins | | | | 0.00 | Sloped |
| Rump Width | Narrow | | | | 0.66 | Wide |
| Rear Leg (Side View) | Posty | | | | 0.15 | Sickled |
| Rear Leg (Rear View) | Hock In | | | | 0.96 | Straight |
| Foot Angle | Low Angle | | | | 0.92 | Steep Angle |
| Foot & Leg Score | Low | | | | 1.16 | High |
| Fore Udder | Loose | | | | 1.61 | Strong |
| Rear Udder Height | Low | | | | 0.99 | High |
| Rear Udder Width | Narrow | | | | 1.61 | Wide |
| Suspensory Ligament | Weak | | | | 0.36 | Strong |
| Udder Depth | Deep | | | | 0.87 | Shallow |
| Teats (Front View) | Wide | | | | 0.44 | Close |
| Teats (Rear View) | Wide | | | | 0.22 | Close |
| Teat Length | Short | | | | 0.83 | Long |

Simple-Dreams PJ PP RED

PJ PP RED

Lucky x Montross

A22

BPI

271/62%

HWI

307/56%

ASI

52/73%

Dtr Fert

108/46%

RRP \$28.00

SEXED \$60.00

Sire: Zimmerview Lucky PP-Red

Dam: MS DDS Effy 30797 PC VG86

PTA Type

UDC

FLC


0.42

1.14

0.71

0 dtrs 0 herds 79% rel

PJ PP Red



TPI

2111

Net Merit \$

116

Health

PTA DPR

1.3

PL

4.6

SCE

2.1

SCR

-

SCS

2.85

Production

PTA Milk

-342

PTA Fat

-20

% Fat

-0.02

PTA Pro

0

% Pro

0.04

0 dtrs 0 herds 80% rel

| | | | | | | |
|----------------------|-----------|--|--|--|-------|-------------|
| Stature | Short | | | | -0.17 | Tall |
| Strength | Narrow | | | | -0.47 | Wide |
| Body Depth | Shallow | | | | -0.60 | Deep |
| Dairyness | Thick | | | | -0.31 | Angular |
| Rump (side View) | High Pins | | | | 0.18 | Sloped |
| Rump Width | Narrow | | | | -0.18 | Wide |
| Rear Leg (Side View) | Posty | | | | -1.59 | Sickled |
| Rear Leg (Rear View) | Hock In | | | | 0.42 | Straight |
| Foot Angle | Low Angle | | | | 0.78 | Steep Angle |
| Foot & Leg Score | Low | | | | 0.73 | High |
| Fore Udder | Loose | | | | 1.62 | Strong |
| Rear Udder Height | Low | | | | 1.79 | High |
| Rear Udder Width | Narrow | | | | 0.17 | Wide |
| Suspensory Ligament | Weak | | | | -0.59 | Strong |
| Udder Depth | Deep | | | | 1.86 | Shallow |
| Teats (Front View) | Wide | | | | -0.71 | Close |
| Teats (Rear View) | Wide | | | | -0.87 | Close |
| Teat Length | Short | | | | 0.21 | Long |

PRE ORDER

STOCKS WILL BE LIMITED

VOPICASSO PP RC | SOUNDSYSTEM | KITAMI PP RC | SOGNO PP RED



(L) SoundSystem Dtr, GoFarm Sound System
(R) Picasso PP Dam, Vogue Loyola Mudslide-P VG87

**GET IN CONTACT TO
SECURE YOUR STOCK
FOR 2021 JOININGS!
LIMITED STOCK**

Kitami Dam, Wil Kysu VG87



Sogno Rosso



| | A2 Status | Pedigree | TPI | NM\$ | Prot (lb) | Pro % | Milk (L) | Fat (lb) | Fat % | Rel% | PTA Type | UDC | FLC | DPR | PL | SCE | RRP\$ |
|------------------------|-----------|------------------------|-------------|------------|-----------|-------|----------|----------|-------|------|-------------|-------------|------|------|-------------|-----|----------------|
| VOPICASSO PP RC | A22 | Mirand x Loyola | 2247 | 118 | 24 | -0.03 | 1033 | 22 | -0.06 | 77 | 2.92 | 2.02 | 0.79 | -3.4 | -1.0 | 2.4 | \$42.00 |
| SOUNDSYSTEM | A11 | Silver x Supersire | 2684 | 517 | 45 | 0.02 | 1218 | 81 | 0.12 | 91 | 1.91 | 1.36 | 0.33 | -1.0 | 1.7 | 2.6 | \$36.00 |
| KITAMI PP RC | A12 | Hotspot x Mr Salvatore | 2622 | 500 | 45 | 0.05 | 950 | 54 | 0.06 | 76 | 1.33 | 0.91 | 0.97 | -0.4 | 3.6 | 1.5 | \$32.00 |
| ITSOGNO PP RED | A22 | Lucky x Kingboy | 2269 | 193 | 8 | 0.07 | -354 | 12 | 0.09 | 80 | 1.18 | 1.03 | 0.52 | 0.4 | 2.3 | 1.8 | \$30.00 |

December Data

SUPERIOR TYPE

Regancrest GV S Bradnick

7H10999

BRADNICK

Sanchez x Shottle

A22

| | | | | | | | | | |
|-----|---------|-----|---------|-----|---------|----------|--------|-------------|---------------|
| BPI | 110/94% | HWI | 117/89% | ASI | -53/99% | Dtr Fert | 97/99% | RRP \$22.00 | SEXED \$55.00 |
|-----|---------|-----|---------|-----|---------|----------|--------|-------------|---------------|

| | | | | |
|-------|---------------------------|----------|------|------|
| Sire: | Gen-Mark Stmatic Sanchez | PTA Type | UDC | FLC |
| Dam: | Regancrest Breyra TL VG88 | 1.71 | 1.80 | 1.76 |

14835 dtrs 5042 herds 99% rel

Daughter, Fairvale Bradnick Josie 2



| | | | |
|---------|------|--------------|-------|
| TPI | 1854 | Net Merit \$ | -124 |
| Health | | Production | |
| PTA DPR | -2.9 | PTA Milk | 481 |
| PL | 1.4 | PTA Fat | -45 |
| SCE | 2.5 | % Fat | -0.22 |
| SCR | -0.2 | PTA Pro | -2 |
| SCS | 3.18 | % Pro | -0.06 |

28913 dtrs 8002 herds 99% rel

| | | | | | | |
|----------------------|-----------|--|--|--|-------|-------------|
| Stature | Short | | | | 1.24 | Tall |
| Strength | Narrow | | | | 1.13 | Wide |
| Body Depth | Shallow | | | | 0.83 | Deep |
| Dairyness | Thick | | | | 0.53 | Angular |
| Rump (side View) | High Pins | | | | 1.36 | Sloped |
| Rump Width | Narrow | | | | 1.12 | Wide |
| Rear Leg (Side View) | Posty | | | | -1.62 | Sickled |
| Rear Leg (Rear View) | Hock In | | | | 2.64 | Straight |
| Foot Angle | Low Angle | | | | 2.85 | Steep Angle |
| Foot & Leg Score | Low | | | | 1.67 | High |
| Fore Udder | Loose | | | | 2.97 | Strong |
| Rear Udder Height | Low | | | | 2.70 | High |
| Rear Udder Width | Narrow | | | | 2.48 | Wide |
| Suspensory Ligament | Weak | | | | 1.42 | Strong |
| Udder Depth | Deep | | | | 1.57 | Shallow |
| Teats (Front View) | Wide | | | | 0.90 | Close |
| Teats (Rear View) | Wide | | | | 0.70 | Close |
| Teat Length | Short | | | | 3.84 | Long |

Mirrabel Sound System

SOUNDSYSTEM

SOUNDSYSTEM

Silver x Supersire

A11

| | | | | | | | | |
|-----|---------|-----|---------|-----|---------|----------|---------|-------------|
| BPI | 327/75% | HWI | 271/71% | ASI | 161/81% | Dtr Fert | 105/75% | RRP \$36.00 |
|-----|---------|-----|---------|-----|---------|----------|---------|-------------|

| | | | | |
|-------|----------------------|----------|------|------|
| Sire: | Seagull-Bay Silver | PTA Type | UDC | FLC |
| Dam: | Mirabell Ssire Shana | 1.91 | 1.36 | 0.33 |

627 dtrs 230 herds 89% rel

Daughter, Zani SOUND SYSTEM



| | | | |
|---------|------|--------------|------|
| TPI | 2684 | Net Merit \$ | 517 |
| Health | | Production | |
| PTA DPR | -1.0 | PTA Milk | 1218 |
| PL | 1.7 | PTA Fat | 81 |
| SCE | 2.6 | % Fat | 0.12 |
| SCR | - | PTA Pro | 45 |
| SCS | 3.01 | % Pro | 0.02 |

1523 dtrs 493 herds 91% rel

| | | | | | | |
|----------------------|-----------|--|--|--|------|-------------|
| Stature | Short | | | | 2.61 | Tall |
| Strength | Narrow | | | | 1.56 | Wide |
| Body Depth | Shallow | | | | 1.98 | Deep |
| Dairyness | Thick | | | | 2.95 | Angular |
| Rump (side View) | High Pins | | | | 0.36 | Sloped |
| Rump Width | Narrow | | | | 1.44 | Wide |
| Rear Leg (Side View) | Posty | | | | 1.89 | Sickled |
| Rear Leg (Rear View) | Hock In | | | | 0.84 | Straight |
| Foot Angle | Low Angle | | | | 0.64 | Steep Angle |
| Foot & Leg Score | Low | | | | 0.97 | High |
| Fore Udder | Loose | | | | 1.32 | Strong |
| Rear Udder Height | Low | | | | 3.05 | High |
| Rear Udder Width | Narrow | | | | 2.61 | Wide |
| Suspensory Ligament | Weak | | | | 0.83 | Strong |
| Udder Depth | Deep | | | | 0.81 | Shallow |
| Teats (Front View) | Wide | | | | 0.83 | Close |
| Teats (Rear View) | Wide | | | | 1.15 | Close |
| Teat Length | Short | | | | 0.45 | Long |

Mr Brash

JSBRASH

BRASH

McCutchen x Gold Chip

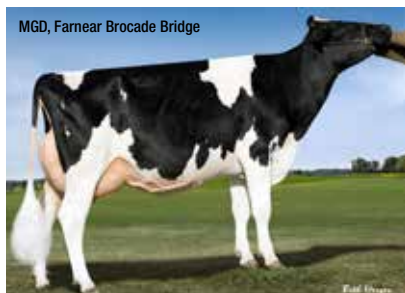
A11

| | | | | | | | | |
|-----|---------|-----|---------|-----|--------|----------|---------|-------------|
| BPI | 201/77% | HWI | 184/73% | ASI | 30/81% | Dtr Fert | 104/81% | RRP \$24.00 |
|-----|---------|-----|---------|-----|--------|----------|---------|-------------|

| | | | | |
|-------|---------------------------|----------|------|------|
| Sire: | De-Su Bkm Mccutchen | PTA Type | UDC | FLC |
| Dam: | Farnear Gc Bridg Bry VG88 | 2.48 | 1.80 | 0.50 |

695 dtrs 349 herds 97% rel

MGD, Farnear Brocade Bridge



| | | | |
|---------|------|--------------|------|
| TPI | 2018 | Net Merit \$ | -35 |
| Health | | Production | |
| PTA DPR | -1.6 | PTA Milk | -742 |
| PL | -0.7 | PTA Fat | 7 |
| SCE | 1.6 | % Fat | 0.13 |
| SCR | -1.3 | PTA Pro | -17 |
| SCS | 2.94 | % Pro | 0.02 |

1291 dtrs 594 herds 98% rel

| | | | | | | |
|----------------------|-----------|--|--|--|-------|-------------|
| Stature | Short | | | | 2.95 | Tall |
| Strength | Narrow | | | | 1.86 | Wide |
| Body Depth | Shallow | | | | 2.23 | Deep |
| Dairyness | Thick | | | | 1.12 | Angular |
| Rump (side View) | High Pins | | | | -1.04 | Sloped |
| Rump Width | Narrow | | | | 1.42 | Wide |
| Rear Leg (Side View) | Posty | | | | -0.49 | Sickled |
| Rear Leg (Rear View) | Hock In | | | | 1.29 | Straight |
| Foot Angle | Low Angle | | | | 1.68 | Steep Angle |
| Foot & Leg Score | Low | | | | 0.99 | High |
| Fore Udder | Loose | | | | 3.29 | Strong |
| Rear Udder Height | Low | | | | 2.35 | High |
| Rear Udder Width | Narrow | | | | 1.66 | Wide |
| Suspensory Ligament | Weak | | | | 1.81 | Strong |
| Udder Depth | Deep | | | | 3.33 | Shallow |
| Teats (Front View) | Wide | | | | 1.07 | Close |
| Teats (Rear View) | Wide | | | | 0.36 | Close |
| Teat Length | Short | | | | 1.86 | Long |

Blexys Brewer RC

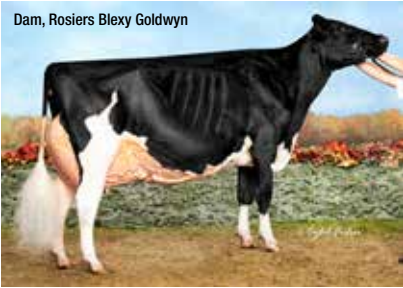
BREWER

RC

Diamondback x Goldwyn

JSBREW

A12



| TPI | |
|---------|------|
| 1831 | |
| Health | |
| PTA DPR | -1.7 |
| PL | -0.9 |
| SCE | 2.9 |
| SCR | -1.0 |
| SCS | 2.98 |

| Net Merit \$ | |
|--------------|------|
| -205 | |
| Production | |
| PTA Milk | -686 |
| PTA Fat | -19 |
| % Fat | 0.03 |
| PTA Pro | -21 |
| % Pro | 0.00 |

0 dtrs 0 herds 80% rel

| | | | | | | |
|----------------------|-----------|--|--|--|-------|-------------|
| Stature | Short | | | | 2.03 | Tall |
| Strength | Narrow | | | | 1.13 | Wide |
| Body Depth | Shallow | | | | 1.75 | Deep |
| Dairyness | Thick | | | | 1.78 | Angular |
| Rump (side View) | High Pins | | | | -0.33 | Sloped |
| Rump Width | Narrow | | | | 2.43 | Wide |
| Rear Leg (Side View) | Posty | | | | 0.40 | Sickled |
| Rear Leg (Rear View) | Hock In | | | | 1.92 | Straight |
| Foot Angle | Low Angle | | | | 1.72 | Steep Angle |
| Foot & Leg Score | Low | | | | 1.53 | High |
| Fore Udder | Loose | | | | 2.18 | Strong |
| Rear Udder Height | Low | | | | 3.00 | High |
| Rear Udder Width | Narrow | | | | 2.31 | Wide |
| Suspensory Ligament | Weak | | | | 2.53 | Strong |
| Udder Depth | Deep | | | | 1.37 | Shallow |
| Teats (Front View) | Wide | | | | 1.16 | Close |
| Teats (Rear View) | Wide | | | | 1.87 | Close |
| Teat Length | Short | | | | 1.40 | Long |

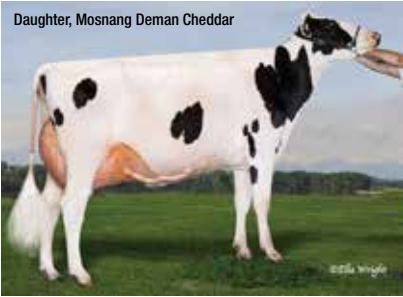
EDG Deman

DEMAN

Mogul x Atwood

JSDEMAN

A12



| TPI | |
|---------|------|
| 2380 | |
| Health | |
| PTA DPR | -2.5 |
| PL | -1.1 |
| SCE | 2.5 |
| SCR | 1.2 |
| SCS | 2.98 |

| Net Merit \$ | |
|--------------|------|
| 209 | |
| Production | |
| PTA Milk | -258 |
| PTA Fat | 47 |
| % Fat | 0.20 |
| PTA Pro | 19 |
| % Pro | 0.10 |

2636 dtrs 1077 herds 98% rel

| | | | | | | |
|----------------------|-----------|--|--|--|-------|-------------|
| Stature | Short | | | | 1.81 | Tall |
| Strength | Narrow | | | | 1.24 | Wide |
| Body Depth | Shallow | | | | 1.66 | Deep |
| Dairyness | Thick | | | | 1.99 | Angular |
| Rump (side View) | High Pins | | | | -1.98 | Sloped |
| Rump Width | Narrow | | | | 1.73 | Wide |
| Rear Leg (Side View) | Posty | | | | -0.46 | Sickled |
| Rear Leg (Rear View) | Hock In | | | | 3.37 | Straight |
| Foot Angle | Low Angle | | | | 2.22 | Steep Angle |
| Foot & Leg Score | Low | | | | 2.35 | High |
| Fore Udder | Loose | | | | 2.65 | Strong |
| Rear Udder Height | Low | | | | 2.74 | High |
| Rear Udder Width | Narrow | | | | 2.23 | Wide |
| Suspensory Ligament | Weak | | | | 1.59 | Strong |
| Udder Depth | Deep | | | | 2.06 | Shallow |
| Teats (Front View) | Wide | | | | 1.20 | Close |
| Teats (Rear View) | Wide | | | | 1.33 | Close |
| Teat Length | Short | | | | 1.30 | Long |

1423 dtrs 604 herds 97% rel

Mr Chassity Gold Chip

GOLD CHIP

Goldwyn x Shottle

7H10920

A12



| TPI | |
|---------|------|
| 1753 | |
| Health | |
| PTA DPR | -1.6 |
| PL | 0.2 |
| SCE | 1.5 |
| SCR | 0.6 |
| SCS | |

| Net Merit \$ | |
|--------------|-------|
| -187 | |
| Production | |
| PTA Milk | -619 |
| PTA Fat | -23 |
| % Fat | 0.00 |
| PTA Pro | -38 |
| % Pro | -0.07 |

40829 dtrs 10977 herds 99% rel

| | | | | | | |
|----------------------|-----------|--|--|--|-------|-------------|
| Stature | Short | | | | 2.13 | Tall |
| Strength | Narrow | | | | 0.79 | Wide |
| Body Depth | Shallow | | | | 0.80 | Deep |
| Dairyness | Thick | | | | 0.63 | Angular |
| Rump (side View) | High Pins | | | | 0.49 | Sloped |
| Rump Width | Narrow | | | | 0.31 | Wide |
| Rear Leg (Side View) | Posty | | | | -1.09 | Sickled |
| Rear Leg (Rear View) | Hock In | | | | 2.12 | Straight |
| Foot Angle | Low Angle | | | | 1.26 | Steep Angle |
| Foot & Leg Score | Low | | | | 1.38 | High |
| Fore Udder | Loose | | | | 1.81 | Strong |
| Rear Udder Height | Low | | | | 2.04 | High |
| Rear Udder Width | Narrow | | | | 0.93 | Wide |
| Suspensory Ligament | Weak | | | | 1.02 | Strong |
| Udder Depth | Deep | | | | 2.38 | Shallow |
| Teats (Front View) | Wide | | | | -0.29 | Close |
| Teats (Rear View) | Wide | | | | -0.63 | Close |
| Teat Length | Short | | | | 1.34 | Long |

24735 dtrs 7422 herds 99% rel

Fustead Goldwyn Guthrie

GUTHRIE

Goldwyn x Blitz

7H9420

A12



| TPI | |
|---------|------|
| 1999 | |
| Health | |
| PTA DPR | -0.8 |
| PL | -0.7 |
| SCE | 1.8 |
| SCR | -3.2 |
| SCS | 2.94 |

| Net Merit \$ | |
|--------------|------|
| -51 | |
| Production | |
| PTA Milk | -473 |
| PTA Fat | -6 |
| % Fat | 0.04 |
| PTA Pro | -5 |
| % Pro | 0.04 |

28380 dtrs 5043 herds 99% rel

| | | | | | | |
|----------------------|-----------|--|--|--|------|-------------|
| Stature | Short | | | | 1.43 | Tall |
| Strength | Narrow | | | | 0.27 | Wide |
| Body Depth | Shallow | | | | 1.06 | Deep |
| Dairyness | Thick | | | | 2.14 | Angular |
| Rump (side View) | High Pins | | | | 0.63 | Sloped |
| Rump Width | Narrow | | | | 2.59 | Wide |
| Rear Leg (Side View) | Posty | | | | 1.74 | Sickled |
| Rear Leg (Rear View) | Hock In | | | | 0.77 | Straight |
| Foot Angle | Low Angle | | | | 0.60 | Steep Angle |
| Foot & Leg Score | Low | | | | 1.19 | High |
| Fore Udder | Loose | | | | 1.89 | Strong |
| Rear Udder Height | Low | | | | 1.90 | High |
| Rear Udder Width | Narrow | | | | 2.94 | Wide |
| Suspensory Ligament | Weak | | | | 2.49 | Strong |
| Udder Depth | Deep | | | | 0.53 | Shallow |
| Teats (Front View) | Wide | | | | 1.26 | Close |
| Teats (Rear View) | Wide | | | | 1.44 | Close |
| Teat Length | Short | | | | 0.40 | Long |

9982 dtrs 2644 herds 99% rel

Go-Farm Innuendo
ITINNUENDO

TooHot x Superman
A12



| | | | | | | | | |
|------------|----------------|------------|----------------|------------|----------------|-----------------|----------------|--------------------|
| BPI | 358/65% | HWI | 298/60% | ASI | 158/77% | Dtr Fert | 105/51% | RRP \$18.00 |
|------------|----------------|------------|----------------|------------|----------------|-----------------|----------------|--------------------|

| | | | | |
|--------------|-----------------|-----------------|-------------|--------------|
| Sire: | Peak AltaToohot | PTA Type | UDC | FLC |
| Dam: | Kns Inn | 1.60 | 1.50 | -0.26 |

0 dtrs 0 herds 77% rel

| | | | |
|------------|-------------|---------------------|------------|
| TPI | 2569 | Net Merit \$ | 416 |
|------------|-------------|---------------------|------------|


| | | | |
|---------------|-------------|-------------------|-------------|
| Health | | Production | |
| PTA DPR | -2.7 | PTA Milk | 877 |
| PL | -0.4 | PTA Fat | 78 |
| SCE | 1.9 | % Fat | 0.15 |
| SCR | - | PTA Pro | 44 |
| SCS | 3.01 | % Pro | 0.06 |

0 dtrs 0 herds 79% rel

| | | | | | | | |
|----------------------|-----------|--|--|--|--|-------|-------------|
| Stature | Short | | | | | 2.40 | Tall |
| Strength | Narrow | | | | | 1.84 | Wide |
| Body Depth | Shallow | | | | | 1.89 | Deep |
| Dairyness | Thick | | | | | 1.36 | Angular |
| Rump (side View) | High Pins | | | | | 1.02 | Sloped |
| Rump Width | Narrow | | | | | 1.40 | Wide |
| Rear Leg (Side View) | Posty | | | | | 0.69 | Sickled |
| Rear Leg (Rear View) | Hock In | | | | | 0.62 | Straight |
| Foot Angle | Low Angle | | | | | 0.74 | Steep Angle |
| Foot & Leg Score | Low | | | | | 0.15 | High |
| Fore Udder | Loose | | | | | 2.05 | Strong |
| Rear Udder Height | Low | | | | | 1.46 | High |
| Rear Udder Width | Narrow | | | | | 2.85 | Wide |
| Suspensory Ligament | Weak | | | | | 1.91 | Strong |
| Udder Depth | Deep | | | | | 1.79 | Shallow |
| Teats (Front View) | Wide | | | | | 2.32 | Close |
| Teats (Rear View) | Wide | | | | | 2.58 | Close |
| Teat Length | Short | | | | | -1.27 | Long |

Aimonetta Inseme Sogno Rosso
ITSOGNO

Lucky x Kingboy
A22



| | | | | | | | | |
|------------|----------------|------------|----------------|------------|----------------|-----------------|----------------|--------------------|
| BPI | 358/65% | HWI | 298/60% | ASI | 158/77% | Dtr Fert | 105/51% | RRP \$30.00 |
|------------|----------------|------------|----------------|------------|----------------|-----------------|----------------|--------------------|

| | | | | |
|--------------|--------------------------------|-----------------|-------------|-------------|
| Sire: | Zimmerview Lucky PP Red | PTA Type | UDC | FLC |
| Dam: | Lesperron Kingboy Santana VG85 | 1.18 | 1.03 | 0.52 |

0 dtrs 0 herds 79% rel

| | | | |
|------------|-------------|---------------------|------------|
| TPI | 2269 | Net Merit \$ | 193 |
|------------|-------------|---------------------|------------|


| | | | |
|---------------|-------------|-------------------|-------------|
| Health | | Production | |
| PTA DPR | 0.4 | PTA Milk | -354 |
| PL | 2.3 | PTA Fat | 12 |
| SCE | 1.8 | % Fat | 0.09 |
| SCR | - | PTA Pro | 8 |
| SCS | 2.74 | % Pro | 0.07 |

0 dtrs 0 herds 80% rel

| | | | | | | | |
|----------------------|-----------|--|--|--|--|-------|-------------|
| Stature | Short | | | | | 1.12 | Tall |
| Strength | Narrow | | | | | 0.58 | Wide |
| Body Depth | Shallow | | | | | 0.51 | Deep |
| Dairyness | Thick | | | | | 0.65 | Angular |
| Rump (side View) | High Pins | | | | | 1.06 | Sloped |
| Rump Width | Narrow | | | | | 0.35 | Wide |
| Rear Leg (Side View) | Posty | | | | | -0.22 | Sickled |
| Rear Leg (Rear View) | Hock In | | | | | 0.25 | Straight |
| Foot Angle | Low Angle | | | | | 0.99 | Steep Angle |
| Foot & Leg Score | Low | | | | | 0.83 | High |
| Fore Udder | Loose | | | | | 1.26 | Strong |
| Rear Udder Height | Low | | | | | 1.82 | High |
| Rear Udder Width | Narrow | | | | | 0.87 | Wide |
| Suspensory Ligament | Weak | | | | | 0.76 | Strong |
| Udder Depth | Deep | | | | | 1.21 | Shallow |
| Teats (Front View) | Wide | | | | | 0.55 | Close |
| Teats (Rear View) | Wide | | | | | 0.48 | Close |
| Teat Length | Short | | | | | -0.38 | Long |

Vogue Picasso PP
VOPICASSO

Mirand x Loyola
A22



| | | | | | | | | |
|------------|----------------|------------|----------------|------------|----------------|-----------------|----------------|--------------------|
| BPI | 358/65% | HWI | 298/60% | ASI | 158/77% | Dtr Fert | 105/51% | RRP \$42.00 |
|------------|----------------|------------|----------------|------------|----------------|-----------------|----------------|--------------------|

| | | | | |
|--------------|------------------------------|-----------------|-------------|-------------|
| Sire: | Coomboona Zipit Mirand PP | PTA Type | UDC | FLC |
| Dam: | Vogue Loyola Mudslide P VG87 | 2.92 | 2.02 | 0.79 |

0 dtrs 0 herds 76% rel

| | | | |
|------------|-------------|---------------------|------------|
| TPI | 2247 | Net Merit \$ | 118 |
|------------|-------------|---------------------|------------|


| | | | |
|---------------|-------------|-------------------|--------------|
| Health | | Production | |
| PTA DPR | -3.4 | PTA Milk | 1033 |
| PL | -1.0 | PTA Fat | 22 |
| SCE | 2.4 | % Fat | -0.06 |
| SCR | - | PTA Pro | 24 |
| SCS | 3.12 | % Pro | -0.03 |

0 dtrs 0 herds 77% rel

| | | | | | | | |
|----------------------|-----------|--|--|--|--|------|-------------|
| Stature | Short | | | | | 3.49 | Tall |
| Strength | Narrow | | | | | 1.24 | Wide |
| Body Depth | Shallow | | | | | 2.18 | Deep |
| Dairyness | Thick | | | | | 3.58 | Angular |
| Rump (side View) | High Pins | | | | | 0.27 | Sloped |
| Rump Width | Narrow | | | | | 2.66 | Wide |
| Rear Leg (Side View) | Posty | | | | | 0.57 | Sickled |
| Rear Leg (Rear View) | Hock In | | | | | 0.85 | Straight |
| Foot Angle | Low Angle | | | | | 1.34 | Steep Angle |
| Foot & Leg Score | Low | | | | | 1.66 | High |
| Fore Udder | Loose | | | | | 2.12 | Strong |
| Rear Udder Height | Low | | | | | 4.09 | High |
| Rear Udder Width | Narrow | | | | | 3.67 | Wide |
| Suspensory Ligament | Weak | | | | | 2.03 | Strong |
| Udder Depth | Deep | | | | | 1.57 | Shallow |
| Teats (Front View) | Wide | | | | | 0.34 | Close |
| Teats (Rear View) | Wide | | | | | 0.81 | Close |
| Teat Length | Short | | | | | 1.18 | Long |

All.Nure Secretariat
SECRETARIAT

Numero Uno x AltaBaxter
A22



| | | | | | | | | |
|------------|----------------|------------|----------------|------------|--------------|-----------------|----------------|--------------------|
| BPI | 231/62% | HWI | 271/60% | ASI | 8/62% | Dtr Fert | 105/74% | RRP \$36.00 |
|------------|----------------|------------|----------------|------------|--------------|-----------------|----------------|--------------------|

| | | | | |
|--------------|-----------------------|-----------------|-------------|-------------|
| Sire: | Amighetti Numero Uno | PTA Type | UDC | FLC |
| Dam: | All.Nure Baxter Silky | 1.51 | 1.98 | 0.97 |

1158 dtrs 395 herds 90% rel

| | | | |
|------------|-------------|---------------------|-----------|
| TPI | 2158 | Net Merit \$ | 63 |
|------------|-------------|---------------------|-----------|

| | | | |
|---------------|-------------|-------------------|-------------|
| Health | | Production | |
| PTA DPR | 0.8 | PTA Milk | -302 |
| PL | 1.3 | PTA Fat | -10 |
| SCE | 2.3 | % Fat | 0.01 |
| SCR | - | PTA Pro | -2 |
| SCS | 2.86 | % Pro | 0.03 |

1619 dtrs 532 herds 91% rel

| | | | | | | | |
|----------------------|-----------|--|--|--|--|-------|-------------|
| Stature | Short | | | | | 0.92 | Tall |
| Strength | Narrow | | | | | 0.44 | Wide |
| Body Depth | Shallow | | | | | 0.63 | Deep |
| Dairyness | Thick | | | | | 0.84 | Angular |
| Rump (side View) | High Pins | | | | | 0.95 | Sloped |
| Rump Width | Narrow | | | | | 1.69 | Wide |
| Rear Leg (Side View) | Posty | | | | | 0.05 | Sickled |
| Rear Leg (Rear View) | Hock In | | | | | 0.29 | Straight |
| Foot Angle | Low Angle | | | | | 0.91 | Steep Angle |
| Foot & Leg Score | Low | | | | | 1.33 | High |
| Fore Udder | Loose | | | | | 1.67 | Strong |
| Rear Udder Height | Low | | | | | 3.00 | High |
| Rear Udder Width | Narrow | | | | | 2.60 | Wide |
| Suspensory Ligament | Weak | | | | | 2.83 | Strong |
| Udder Depth | Deep | | | | | 1.44 | Shallow |
| Teats (Front View) | Wide | | | | | -0.05 | Close |
| Teats (Rear View) | Wide | | | | | 1.54 | Close |
| Teat Length | Short | | | | | 1.95 | Long |

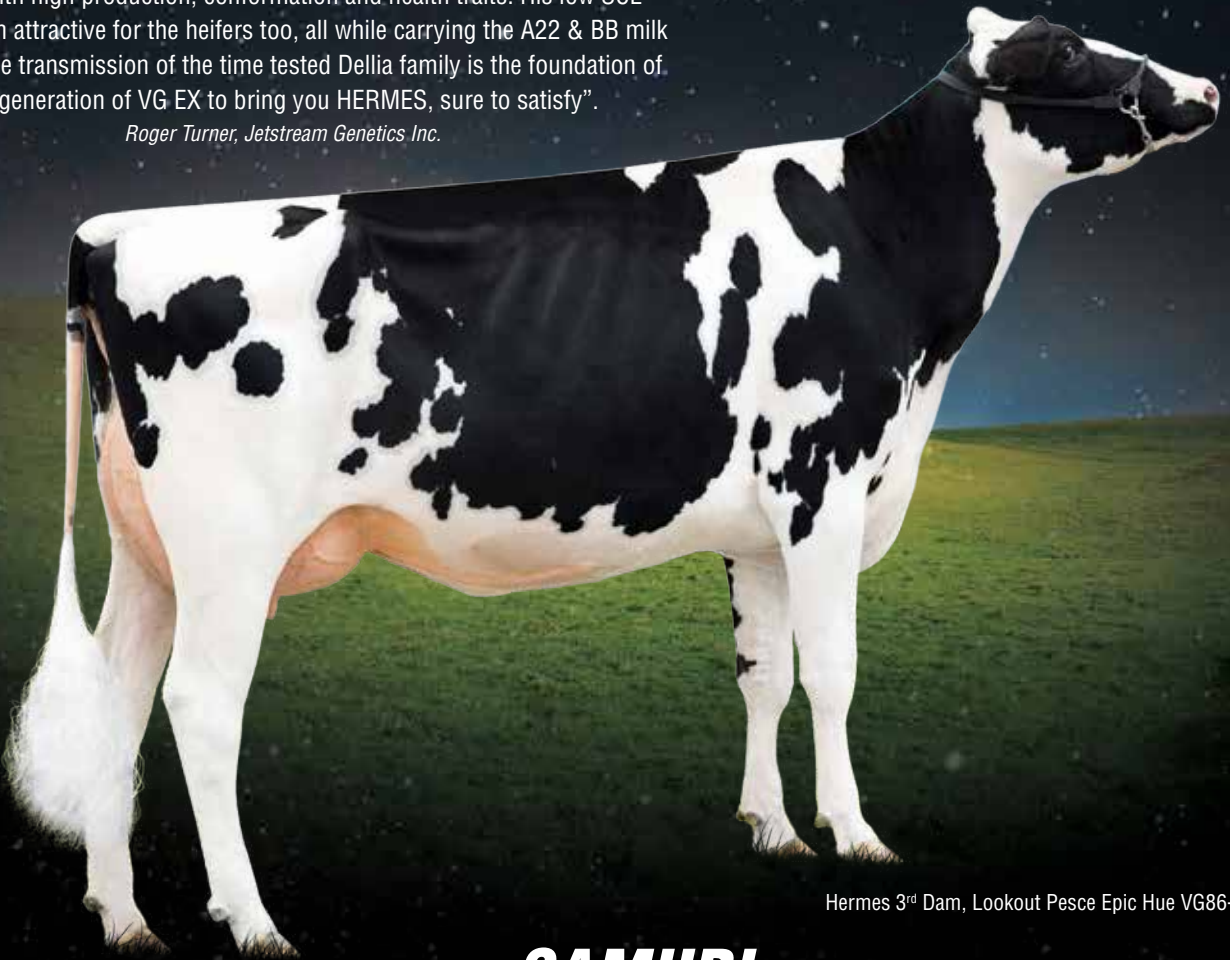
A POWERFUL GENETIC DUO

HERMES JSHERMES Positive x Bourbon

A22 | BPI +456 | HWI +462 | Type +107 | Mammary +108 | Survival +112 | Dtr Fert +111

"JSHERMES delivers exactly what breeders are searching for, trouble free cows with high production, conformation and health traits. His low SCE makes him attractive for the heifers too, all while carrying the A22 & BB milk genes. The transmission of the time tested Dellia family is the foundation of 10 generation of VG EX to bring you HERMES, sure to satisfy".

Roger Turner, Jetstream Genetics Inc.



Hermes 3rd Dam, Lookout Pesce Epic Hue VG86-2YR

SAMURI 7H012897 AltaSpring x Supersire

A22 | BPI +358 | HWI +351 | Type +104 | Mammary +104 | Survival +108 | Dtr Fert +111

SAMURI sires youthful udders, strong attachments, and exceptional mobility. With his +2.2 SCR and 99% reliability, he is a great choice for sexed semen usage to generate more high value female pregnancies! This A22 sire, now with more than 3,000 milking daughters, has steadied his position of both Type & Udder composites, positive Health and Fitness traits and has a BV of \$562 Net Merit & +2702 TPI.



SAMURI



DAM, OCD SUPERSIRE 9882

December 2020



FERTILITY SIRES

SSi TR Mortz Liberty P
LIBERTY P
Monterey x Eraser

7H014132
A22

BPI 373/66%
HWI 341/60%
ASI 147/78%
Dtr Fert 107/52%
RRP \$26.00
SEXED \$55.00

Sire: Aurora Moritz 372
Dam: S-S-I Eraser Maci 10932-P

PTA Type 1.20
UDC 1.89
FLC 0.45

0 dtrs 0 herds 79% rel



MGD, SSI Supersire Miri 8679

| TPI | | Net Merit \$ | |
|---------|------|--------------|------|
| 2571 | | 422 | |
| Health | | Production | |
| PTA DPR | 1.1 | PTA Milk | 555 |
| PL | 3.2 | PTA Fat | 41 |
| SCE | 1.6 | % Fat | 0.07 |
| SCR | 4.6 | PTA Pro | 26 |
| SCS | 2.83 | % Pro | 0.03 |

0 dtrs 0 herds 81% rel

| | | | | | | |
|----------------------|-----------|--|--|--|-------|-------------|
| Stature | Short | | | | 0.85 | Tall |
| Strength | Narrow | | | | 0.13 | Wide |
| Body Depth | Shallow | | | | 0.15 | Deep |
| Dairyness | Thick | | | | 0.68 | Angular |
| Rump (side View) | High Pins | | | | -0.87 | Sloped |
| Rump Width | Narrow | | | | 1.49 | Wide |
| Rear Leg (Side View) | Posty | | | | 0.98 | Sickled |
| Rear Leg (Rear View) | Hock In | | | | 0.48 | Straight |
| Foot Angle | Low Angle | | | | 0.73 | Steep Angle |
| Foot & Leg Score | Low | | | | 0.65 | High |
| Fore Udder | Loose | | | | 2.14 | Strong |
| Rear Udder Height | Low | | | | 2.39 | High |
| Rear Udder Width | Narrow | | | | 2.09 | Wide |
| Suspensory Ligament | Weak | | | | 1.10 | Strong |
| Udder Depth | Deep | | | | 2.07 | Shallow |
| Tests (Front View) | Wide | | | | 0.58 | Close |
| Tests (Rear View) | Wide | | | | 0.74 | Close |
| Test Length | Short | | | | -0.91 | Long |

OCD Spring Samuri
SAMURI
AltaSpring x Supersire

7H012897
A22

BPI 358/75%
HWI 351/71%
ASI 169/81%
Dtr Fert 111/79%
RRP \$32.00
SEXED \$65.00

Sire: Westenrade AltaSpring
Dam: Ocd Supersire 9882 VG86

PTA Type 1.20
UDC 0.67
FLC 0.18

364 dtrs 88 herds 97% rel



SAMURI

| TPI | | Net Merit \$ | |
|---------|------|--------------|------|
| 2702 | | 562 | |
| Health | | Production | |
| PTA DPR | 1.8 | PTA Milk | 401 |
| PL | 2.2 | PTA Fat | 81 |
| SCE | 2.0 | % Fat | 0.23 |
| SCR | 2.2 | PTA Pro | 38 |
| SCS | 3.10 | % Pro | 0.09 |

3328 dtrs 273 herds 99% rel

| | | | | | | |
|----------------------|-----------|--|--|--|-------|-------------|
| Stature | Short | | | | 1.19 | Tall |
| Strength | Narrow | | | | 0.56 | Wide |
| Body Depth | Shallow | | | | 0.55 | Deep |
| Dairyness | Thick | | | | 0.89 | Angular |
| Rump (side View) | High Pins | | | | 1.24 | Sloped |
| Rump Width | Narrow | | | | 1.31 | Wide |
| Rear Leg (Side View) | Posty | | | | 1.62 | Sickled |
| Rear Leg (Rear View) | Hock In | | | | 0.27 | Straight |
| Foot Angle | Low Angle | | | | 0.26 | Steep Angle |
| Foot & Leg Score | Low | | | | 0.54 | High |
| Fore Udder | Loose | | | | 1.36 | Strong |
| Rear Udder Height | Low | | | | 0.80 | High |
| Rear Udder Width | Narrow | | | | 0.55 | Wide |
| Suspensory Ligament | Weak | | | | 0.23 | Strong |
| Udder Depth | Deep | | | | 1.51 | Shallow |
| Tests (Front View) | Wide | | | | 1.36 | Close |
| Tests (Rear View) | Wide | | | | 1.25 | Close |
| Test Length | Short | | | | -1.84 | Long |

Mr Apples Armani

ARMANI RC

Goldwyn x Regiment

7H11703

A11



| TPI | |
|---------|------|
| 2073 | |
| Health | |
| PTA DPR | 1.4 |
| PL | -2.2 |
| SCE | 2.5 |
| SCR | 1.7 |
| SCS | 2.83 |

| Net Merit \$ | |
|--------------|-------|
| 10 | |
| Production | |
| PTA Milk | -1826 |
| PTA Fat | 14 |
| % Fat | 0.32 |
| PTA Pro | -15 |
| % Pro | 0.16 |

11579 dtrs 4374 herds 99% rel

| | | | | | | |
|----------------------|-----------|--|--|--|-------|-------------|
| Stature | Short | | | | 0.09 | Tall |
| Strength | Narrow | | | | -1.17 | Wide |
| Body Depth | Shallow | | | | -0.48 | Deep |
| Dairyness | Thick | | | | 0.97 | Angular |
| Rump (side View) | High Pins | | | | -0.30 | Sloped |
| Rump Width | Narrow | | | | -0.32 | Wide |
| Rear Leg (Side View) | Posty | | | | -0.16 | Sickled |
| Rear Leg (Rear View) | Hock In | | | | 1.25 | Straight |
| Foot Angle | Low Angle | | | | 1.14 | Steep Angle |
| Foot & Leg Score | Low | | | | 1.48 | High |
| Fore Udder | Loose | | | | 0.82 | Strong |
| Rear Udder Height | Low | | | | 2.62 | High |
| Rear Udder Width | Narrow | | | | 1.15 | Wide |
| Suspensory Ligament | Weak | | | | 2.09 | Strong |
| Udder Depth | Deep | | | | 0.56 | Shallow |
| Tests (Front View) | Wide | | | | 0.98 | Close |
| Tests (Rear View) | Wide | | | | 1.12 | Close |
| Test Length | Short | | | | 0.15 | Long |

6423 dtrs 2740 herds 99% rel

Kings-Ransom 1st Dewars

DEWARS

Alta1stclass x Doorman

14H07748

A22



| TPI | |
|---------|------|
| 2430 | |
| Health | |
| PTA DPR | 0.4 |
| PL | 2.1 |
| SCE | 1.8 |
| SCR | 1.0 |
| SCS | 2.47 |

| Net Merit \$ | |
|--------------|------|
| 317 | |
| Production | |
| PTA Milk | -405 |
| PTA Fat | 40 |
| % Fat | 0.20 |
| PTA Pro | 6 |
| % Pro | 0.07 |

2163 dtrs 785 herds 97% rel

| | | | | | | |
|----------------------|-----------|--|--|--|-------|-------------|
| Stature | Short | | | | 2.62 | Tall |
| Strength | Narrow | | | | 0.72 | Wide |
| Body Depth | Shallow | | | | 1.23 | Deep |
| Dairyness | Thick | | | | 1.58 | Angular |
| Rump (side View) | High Pins | | | | 2.21 | Sloped |
| Rump Width | Narrow | | | | 1.15 | Wide |
| Rear Leg (Side View) | Posty | | | | -2.19 | Sickled |
| Rear Leg (Rear View) | Hock In | | | | 1.04 | Straight |
| Foot Angle | Low Angle | | | | 2.23 | Steep Angle |
| Foot & Leg Score | Low | | | | 1.04 | High |
| Fore Udder | Loose | | | | 2.22 | Strong |
| Rear Udder Height | Low | | | | 2.22 | High |
| Rear Udder Width | Narrow | | | | 1.36 | Wide |
| Suspensory Ligament | Weak | | | | 0.62 | Strong |
| Udder Depth | Deep | | | | 2.82 | Shallow |
| Tests (Front View) | Wide | | | | 1.03 | Close |
| Tests (Rear View) | Wide | | | | 0.67 | Close |
| Test Length | Short | | | | 0.47 | Long |

915 dtrs 393 herds 94% rel

Ghezzi Gplus Duplo

DUPLO

Superhero x Powerball

ITDUPLO

A12



| TPI | |
|---------|------|
| 2480 | |
| Health | |
| PTA DPR | 0.6 |
| PL | 2.8 |
| SCE | 1.6 |
| SCR | - |
| SCS | 2.90 |

| Net Merit \$ | |
|--------------|------|
| 450 | |
| Production | |
| PTA Milk | 545 |
| PTA Fat | 51 |
| % Fat | 0.11 |
| PTA Pro | 35 |
| % Pro | 0.06 |

0 dtrs 0 herds 79% rel

| | | | | | | |
|----------------------|-----------|--|--|--|-------|-------------|
| Stature | Short | | | | -0.40 | Tall |
| Strength | Narrow | | | | -0.64 | Wide |
| Body Depth | Shallow | | | | -0.40 | Deep |
| Dairyness | Thick | | | | 0.50 | Angular |
| Rump (side View) | High Pins | | | | 0.77 | Sloped |
| Rump Width | Narrow | | | | -0.02 | Wide |
| Rear Leg (Side View) | Posty | | | | 1.43 | Sickled |
| Rear Leg (Rear View) | Hock In | | | | -1.08 | Straight |
| Foot Angle | Low Angle | | | | -1.44 | Steep Angle |
| Foot & Leg Score | Low | | | | -0.37 | High |
| Fore Udder | Loose | | | | 0.78 | Strong |
| Rear Udder Height | Low | | | | 0.74 | High |
| Rear Udder Width | Narrow | | | | 0.94 | Wide |
| Suspensory Ligament | Weak | | | | -0.38 | Strong |
| Udder Depth | Deep | | | | 0.39 | Shallow |
| Tests (Front View) | Wide | | | | -0.27 | Close |
| Tests (Rear View) | Wide | | | | -0.66 | Close |
| Test Length | Short | | | | -0.36 | Long |

0 dtrs 0 herds 77% rel

Peak Exeter

EXETER

Bourbon x Altaspring

JSEXETER

A22



| TPI | |
|---------|------|
| 2584 | |
| Health | |
| PTA DPR | 0.5 |
| PL | 2.0 |
| SCE | 1.6 |
| SCR | 3.1 |
| SCS | 2.83 |

| Net Merit \$ | |
|--------------|------|
| 483 | |
| Production | |
| PTA Milk | 870 |
| PTA Fat | 76 |
| % Fat | 0.15 |
| PTA Pro | 36 |
| % Pro | 0.03 |

0 dtrs 0 herds 80% rel

| | | | | | | |
|----------------------|-----------|--|--|--|-------|-------------|
| Stature | Short | | | | 0.88 | Tall |
| Strength | Narrow | | | | 1.35 | Wide |
| Body Depth | Shallow | | | | 1.00 | Deep |
| Dairyness | Thick | | | | 0.59 | Angular |
| Rump (side View) | High Pins | | | | -0.24 | Sloped |
| Rump Width | Narrow | | | | 0.44 | Wide |
| Rear Leg (Side View) | Posty | | | | -0.53 | Sickled |
| Rear Leg (Rear View) | Hock In | | | | -0.19 | Straight |
| Foot Angle | Low Angle | | | | 0.08 | Steep Angle |
| Foot & Leg Score | Low | | | | -0.12 | High |
| Fore Udder | Loose | | | | 1.16 | Strong |
| Rear Udder Height | Low | | | | 0.66 | High |
| Rear Udder Width | Narrow | | | | 1.28 | Wide |
| Suspensory Ligament | Weak | | | | 0.11 | Strong |
| Udder Depth | Deep | | | | 0.68 | Shallow |
| Tests (Front View) | Wide | | | | 0.11 | Close |
| Tests (Rear View) | Wide | | | | -0.20 | Close |
| Test Length | Short | | | | -0.38 | Long |

0 dtrs 0 herds 80% rel

Dam, Farnear-TBR-BH Vickie



| TPI | | Net Merit \$ | |
|---------|------|--------------|-------|
| 2395 | | 317 | |
| Health | | Production | |
| PTA DPR | 0.8 | PTA Milk | 467 |
| PL | 4.1 | PTA Fat | 14 |
| SCE | 1.4 | % Fat | -0.01 |
| SCR | 0.1 | PTA Pro | 16 |
| SCS | 2.98 | % Pro | 0.01 |

| | | | | | | |
|----------------------|-----------|--|--|--|-------|-------------|
| Stature | Short | | | | 0.73 | Tall |
| Strength | Narrow | | | | 0.31 | Wide |
| Body Depth | Shallow | | | | 0.05 | Deep |
| Dairyness | Thick | | | | 0.29 | Angular |
| Rump (side view) | High Pins | | | | -0.67 | Sloped |
| Rump Width | Narrow | | | | 1.01 | Wide |
| Rear Leg (Side View) | Postly | | | | -1.78 | Sickled |
| Rear Leg (Rear View) | Hock In | | | | 0.68 | Straight |
| Foot Angle | Low Angle | | | | 1.06 | Steep Angle |
| Foot & Leg Score | Low | | | | 0.45 | High |
| Fore Udder | Loose | | | | 2.17 | Strong |
| Rear Udder Height | Low | | | | 1.97 | High |
| Rear Udder Width | Narrow | | | | 1.75 | Wide |
| Suspensory Ligament | Weak | | | | 0.10 | Strong |
| Udder Depth | Deep | | | | 1.49 | Shallow |
| Teats (Front View) | Wide | | | | 0.86 | Close |
| Teats (Rear View) | Wide | | | | 0.90 | Close |
| Teat Length | Short | | | | -0.35 | Long |

69 dtrs 29 herds 91% rel

Dams sister, Farnear TBR BH Georgia

A black and white photograph of a cow standing in a green field, eating a large green leaf. The cow has a black and white patterned coat. The background shows a clear blue sky and a line of trees in the distance. The text "Dams sister, Farnear TBR BH Georgia" is overlaid on the top left of the image.

| TPI | | Net Merit \$ | |
|---------|------|--------------|------|
| 2452 | | 405 | |
| Health | | Production | |
| PTA DPR | -0.4 | PTA Milk | 980 |
| PL | 1.7 | PTA Fat | 58 |
| SCE | 1.9 | % Fat | 0.07 |
| SCR | 4.4 | PTA Pro | 42 |
| SCS | 2.93 | % Pro | 0.04 |

| | | | | | | |
|----------------------|-----------|--|--|--|-------|-------------|
| Stature | Short | | | | 1.94 | Tall |
| Strength | Narrow | | | | 0.55 | Wide |
| Body Depth | Shallow | | | | 1.37 | Deep |
| Dairyness | Thick | | | | 2.81 | Angular |
| Rump (side View) | High Pins | | | | 1.09 | Sloped |
| Rump Width | Narrow | | | | 1.29 | Wide |
| Rear Leg (Side View) | Posty | | | | 1.75 | Sickled |
| Rear Leg (Rear View) | Hock In | | | | -0.89 | Straight |
| Foot Angle | Low Angle | | | | -1.24 | Steep Angle |
| Foot & Leg Score | Low | | | | -0.41 | High |
| Fore Udder | Loose | | | | -0.36 | Strong |
| Rear Udder Height | Low | | | | 0.55 | High |
| Rear Udder Width | Narrow | | | | 1.85 | Wide |
| Suspensory Ligament | Weak | | | | 1.84 | Strong |
| Udder Depth | Deep | | | | -0.97 | Shallow |
| Teats (Front View) | Wide | | | | 0.99 | Close |
| Teats (Rear View) | Wide | | | | 1.30 | Close |
| Test Length | Short | | | | -1.15 | Long |

212 dtrs 62 herds 91% rel

| TPI | | Net Merit \$ | |
|---------|------|--------------|-------|
| 2573 | | 466 | |
| Health | | Production | |
| PTA DPR | -0.4 | PTA Milk | 1543 |
| PL | 5.1 | PTA Fat | 39 |
| SCE | 1.3 | % Fat | -0.07 |
| SCR | 0.5 | PTA Pro | 31 |
| SCS | 2.68 | % Pro | -0.06 |

| Metric | Category | Score | Target Range |
|----------------------|-----------|-------|------------------|
| Stature | Short | -0.78 | 1.77 Tall |
| Strength | Narrow | -0.69 | 0.98 Wide |
| Body Depth | Shallow | -0.61 | 0.81 Deep |
| Dairyness | Thick | -0.53 | 0.83 Angular |
| Rump (side View) | High Pins | -0.45 | -0.05 Sloped |
| Rump Width | Narrow | -0.37 | 0.79 Wide |
| Rear Leg (Side View) | Posty | -0.29 | -0.38 Sickled |
| Rear Leg (Rear View) | Hock In | -0.21 | 2.33 Straight |
| Foot Angle | Low Angle | -0.13 | 1.79 Steep Angle |
| Foot & Leg Score | Low | -0.05 | 1.66 High |
| Fore Udder | Loose | 0.03 | 1.88 Strong |
| Rear Udder Height | Low | 0.11 | 2.31 High |
| Rear Udder Width | Narrow | 0.19 | 2.54 Wide |
| Suspensory Ligament | Weak | 0.27 | -0.20 Strong |
| Udder Depth | Deep | 0.35 | 1.04 Shallow |
| Teats (Front View) | Wide | 0.43 | 0.15 Close |
| Teats (Rear View) | Wide | 0.51 | -0.02 Close |
| Teat Length | Short | 0.59 | 1.24 Long |

399 dtrs 193 herds 97% rel

Daughter, HMO Kora



Wellbared B. Butler

| TPI | | Net Merit \$ | |
|---------|------|--------------|------|
| 2502 | | 401 | |
| Health | | Production | |
| PTA DPR | 1.8 | PTA Milk | 491 |
| PL | 4.2 | PTA Fat | 33 |
| SCE | 2.1 | % Fat | 0.05 |
| SCR | 1.0 | PTA Pro | 27 |
| SCS | 2.77 | % Pro | 0.04 |

| Attribute | Category | Score | Target | Unit |
|----------------------|-----------|-------|--------|-------------|
| Stature | Short | 0.89 | 1.00 | Tall |
| Strength | Narrow | 0.71 | 1.00 | Wide |
| Body Depth | Shallow | 0.43 | 1.00 | Deep |
| Dairyness | Thick | 0.03 | 1.00 | Angular |
| Rump (side View) | High Pins | 0.10 | 1.00 | Sloped |
| Rump Width | Narrow | 0.74 | 1.00 | Wide |
| Rear Leg (Side View) | Postly | 0.26 | 1.00 | Sickled |
| Rear Leg (Rear View) | Hock In | -0.46 | 0.00 | Straight |
| Foot Angle | Low Angle | 0.07 | 1.00 | Steep Angle |
| Foot & Leg Score | Low | 0.16 | 1.00 | High |
| Fore Udder | Loose | 2.08 | 1.00 | Strong |
| Rear Udder Height | Low | 1.47 | 1.00 | High |
| Rear Udder Width | Narrow | 1.51 | 1.00 | Wide |
| Suspensory Ligament | Weak | -0.06 | 0.00 | Strong |
| Udder Depth | Deep | 1.37 | 1.00 | Shallow |
| Tests (Front View) | Wide | -0.16 | 0.00 | Close |
| Tests (Rear View) | Wide | -0.72 | 0.00 | Close |
| Test Length | Short | -0.33 | 0.00 | Long |

681 dtrs 285 herds 97% re

Holstein Australian Breeding Values

December 2020

| Name | BPI | BPI Rel% | HWI | HWI Rel% | ASI | Protein (Kg) | Protein % | Milk (L) | Fat (Kg) | Fat % | Rel % | Milk Speed | Temp | Likeability | Rel % | Overall Type | Mammary System | Rel % | Mastitis Resistance | Rel % | Daughter Fertility | Rel % | RRP* | Sexed* |
|---------------|-----|----------|-----|----------|------|--------------|-----------|----------|----------|-------|-------|------------|------|-------------|-------|--------------|----------------|-------|---------------------|-------|--------------------|-------|---------|---------|
| A2P2 PP | 432 | 59 | 384 | 53 | 195 | 20 | 0.22 | 303 | 45 | 0.46 | 72 | 103 | 101 | 104 | 55 | 105 | 107 | 51 | 107 | 57 | 108 | 40 | \$32.00 | |
| ANSWER P | 237 | 70 | 245 | 67 | 89 | 21 | -0.12 | 1018 | 28 | -0.22 | 75 | 100 | 102 | 105 | 68 | 100 | 105 | 74 | 101 | 67 | 105 | 73 | \$18.00 | |
| ARMANI RC | 237 | 89 | 320 | 84 | 27 | -17 | 0.28 | -1173 | 6 | 0.81 | 95 | 101 | 100 | 102 | 87 | 104 | 110 | 91 | 102 | 95 | 106 | 92 | \$20.00 | |
| BARCUD PP RED | 289 | 68 | 309 | 63 | 66 | 18 | 0.01 | 660 | 7 | -0.31 | 78 | 103 | 101 | 104 | 66 | 102 | 98 | 64 | 108 | 74 | 108 | 52 | \$20.00 | \$55.00 |
| BRADNICK | 110 | 94 | 117 | 89 | -53 | 11 | -0.22 | 857 | -17 | -0.78 | 99 | 101 | 107 | 109 | 92 | 109 | 113 | 99 | 101 | 99 | 97 | 99 | \$22.00 | \$55.00 |
| BRASH | 201 | 77 | 184 | 73 | 30 | 2 | -0.01 | 108 | 12 | 0.11 | 81 | 105 | 103 | 106 | 83 | 106 | 110 | 80 | 101 | 78 | 104 | 81 | \$24.00 | |
| BREWER RC | 100 | 68 | 180 | 63 | -39 | -3 | -0.07 | 21 | -8 | -0.13 | 79 | 103 | 102 | 104 | 67 | 106 | 111 | 65 | 96 | 69 | 107 | 57 | \$26.00 | |
| CEPHUS | 371 | 66 | 348 | 60 | 174 | 27 | 0.16 | 696 | 32 | 0.04 | 78 | 103 | 102 | 105 | 62 | 100 | 104 | 59 | 103 | 67 | 107 | 51 | \$24.00 | |
| CFP PP RC | 459 | 60 | 443 | 54 | 214 | 25 | 0.32 | 292 | 37 | 0.36 | 73 | 103 | 102 | 104 | 55 | 103 | 107 | 51 | 104 | 58 | 108 | 40 | \$28.00 | \$65.00 |
| CLASH P | 329 | 72 | 303 | 69 | 153 | 29 | 0.29 | 502 | 7 | -0.21 | 77 | 102 | 100 | 102 | 80 | 100 | 102 | 73 | 105 | 77 | 107 | 75 | \$20.00 | |
| COLD P | 377 | 72 | 401 | 66 | 133 | 23 | 0.22 | 419 | 11 | -0.10 | 81 | 103 | 100 | 103 | 75 | 109 | 108 | 74 | 106 | 69 | 112 | 53 | \$22.00 | |
| DAVIS | 393 | 62 | 344 | 56 | 176 | 19 | 0.17 | 384 | 41 | 0.36 | 75 | 102 | 103 | 105 | 58 | 102 | 107 | 55 | 106 | 60 | 106 | 45 | \$26.00 | |
| DEMAN | 361 | 79 | 313 | 75 | 165 | 17 | 0.26 | 130 | 30 | 0.36 | 84 | 104 | 104 | 106 | 85 | 108 | 109 | 82 | 103 | 82 | 101 | 84 | \$18.00 | |
| DEWARS | 526 | 73 | 534 | 70 | 143 | 8 | 0.20 | -84 | 37 | 0.59 | 75 | 102 | 103 | 106 | 84 | 110 | 108 | 78 | 113 | 73 | 107 | 79 | \$32.00 | |
| DUPLO | 361 | 67 | 381 | 61 | 124 | 21 | 0.18 | 449 | 14 | -0.08 | 78 | 103 | 104 | 105 | 66 | 100 | 102 | 63 | 105 | 69 | 111 | 53 | \$16.00 | |
| EXETER | 302 | 65 | 299 | 59 | 134 | 17 | 0.04 | 557 | 39 | 0.22 | 78 | 100 | 99 | 101 | 62 | 100 | 102 | 59 | 108 | 65 | 107 | 47 | \$24.00 | |
| FABIO | 291 | 72 | 331 | 67 | 84 | 19 | 0.01 | 693 | 15 | -0.21 | 80 | 98 | 102 | 103 | 65 | 104 | 106 | 72 | 103 | 72 | 110 | 65 | \$22.00 | |
| FEDORA | 463 | 66 | 447 | 60 | 185 | 25 | 0.22 | 485 | 33 | 0.19 | 77 | 102 | 101 | 104 | 63 | 103 | 106 | 61 | 108 | 69 | 109 | 51 | \$22.00 | |
| GLAMOR | 325 | 79 | 286 | 73 | 163 | 34 | 0.08 | 1111 | 26 | -0.31 | 89 | 103 | 102 | 106 | 65 | 105 | 106 | 76 | 101 | 92 | 105 | 69 | \$18.00 | |
| GOLD CHIP | 55 | 94 | 77 | 89 | -106 | -13 | -0.32 | 150 | -1 | -0.11 | 99 | 102 | 105 | 107 | 96 | 105 | 106 | 98 | 103 | 99 | 97 | 98 | \$32.00 | \$70.00 |
| GUTHRIE | 265 | 95 | 264 | 90 | 81 | 14 | 0.09 | 357 | 11 | -0.06 | 99 | 101 | 102 | 105 | 99 | 108 | 110 | 99 | 104 | 99 | 101 | 99 | \$20.00 | |
| HERMES | 456 | 62 | 462 | 55 | 169 | 18 | 0.11 | 454 | 46 | 0.39 | 74 | 102 | 102 | 106 | 57 | 107 | 108 | 54 | 105 | 59 | 111 | 43 | \$32.00 | |
| HOUSE | 379 | 71 | 376 | 66 | 131 | 15 | 0.19 | 180 | 25 | 0.24 | 80 | 101 | 101 | 104 | 64 | 106 | 107 | 73 | 107 | 67 | 108 | 61 | \$24.00 | |
| HOWDY | 466 | 62 | 478 | 56 | 176 | 18 | 0.20 | 278 | 41 | 0.42 | 75 | 101 | 101 | 104 | 57 | 103 | 105 | 54 | 108 | 58 | 112 | 44 | \$32.00 | |
| INNUENDO | 358 | 65 | 298 | 60 | 158 | 22 | 0.13 | 575 | 34 | 0.13 | 77 | 103 | 102 | 105 | 62 | 107 | 108 | 60 | 105 | 65 | 105 | 51 | \$18.00 | |
| KITAMI PP RC | 369 | 62 | 336 | 55 | 149 | 24 | 0.20 | 495 | 19 | -0.03 | 74 | 102 | 103 | 105 | 57 | 102 | 106 | 54 | 105 | 59 | 107 | 44 | \$32.00 | |
| KONRAD | 340 | 63 | 241 | 56 | 185 | 26 | 0.21 | 560 | 33 | 0.13 | 75 | 103 | 103 | 106 | 59 | 106 | 106 | 55 | 104 | 60 | 102 | 44 | \$40.00 | |
| LIBERTY P | 373 | 66 | 341 | 60 | 147 | 28 | 0.08 | 895 | 27 | -0.17 | 78 | 102 | 102 | 105 | 61 | 104 | 108 | 60 | 106 | 63 | 107 | 52 | \$26.00 | \$55.00 |
| MAINSTAGE | 379 | 62 | 337 | 56 | 157 | 32 | 0.10 | 998 | 23 | -0.28 | 75 | 103 | 104 | 106 | 58 | 101 | 106 | 54 | 108 | 59 | 103 | 44 | \$50.00 | |
| MOLINE | 380 | 60 | 349 | 54 | 167 | 18 | 0.12 | 413 | 45 | 0.39 | 72 | 103 | 102 | 104 | 55 | 101 | 105 | 51 | 106 | 56 | 107 | 42 | \$32.00 | |
| NIPIT PP RC | 443 | 60 | 433 | 54 | 210 | 32 | 0.31 | 584 | 27 | 0.03 | 73 | 103 | 103 | 105 | 56 | 101 | 103 | 52 | 102 | 58 | 111 | 40 | \$32.00 | \$65.00 |
| PJ PP RED | 271 | 62 | 307 | 56 | 52 | 9 | 0.06 | 233 | 7 | -0.04 | 73 | 101 | 102 | 105 | 58 | 100 | 103 | 55 | 104 | 58 | 108 | 46 | \$28.00 | \$60.00 |
| SALVATORE RC | 259 | 76 | 253 | 72 | 46 | 18 | -0.14 | 914 | 14 | -0.36 | 81 | 97 | 104 | 105 | 81 | 108 | 105 | 78 | 107 | 77 | 106 | 79 | \$20.00 | |
| SAMURI | 358 | 75 | 351 | 71 | 169 | 20 | 0.19 | 376 | 36 | 0.29 | 81 | 102 | 102 | 104 | 70 | 104 | 104 | 76 | 103 | 78 | 111 | 79 | \$32.00 | \$65.00 |
| SANJAY | 414 | 61 | 369 | 55 | 170 | 30 | 0.07 | 982 | 36 | -0.08 | 74 | 103 | 102 | 107 | 56 | 109 | 110 | 52 | 106 | 58 | 105 | 41 | \$28.00 | |
| SECRETARIAT | 231 | 62 | 271 | 60 | 8 | 0 | 0.02 | -43 | 2 | 0.06 | 62 | 104 | 104 | 104 | 76 | 105 | 107 | 71 | 105 | 70 | 105 | 74 | \$36.00 | \$70.00 |
| SIR-ROZ | 449 | 65 | 431 | 60 | 181 | 21 | 0.20 | 395 | 39 | 0.32 | 78 | 103 | 102 | 105 | 63 | 99 | 107 | 59 | 107 | 65 | 106 | 50 | \$25.00 | \$60.00 |
| SOUNDSYSTEM | 327 | 75 | 271 | 71 | 161 | 22 | 0.08 | 664 | 40 | 0.17 | 81 | 104 | 104 | 106 | 81 | 109 | 107 | 76 | 101 | 79 | 105 | 75 | \$36.00 | |
| STALLONE | 386 | 59 | 315 | 53 | 204 | 24 | 0.16 | 581 | 50 | 0.36 | 73 | 102 | 103 | 106 | 54 | 107 | 106 | 50 | 103 | 55 | 105 | 39 | \$26.00 | |
| SUPERHERO | 361 | 84 | 373 | 79 | 103 | 24 | 0.06 | 750 | 13 | -0.28 | 92 | 104 | 105 | 107 | 79 | 107 | 102 | 87 | 104 | 92 | 111 | 82 | \$20.00 | |
| VOMEMPHIS PP | 302 | 60 | 310 | 54 | 104 | 18 | 0.08 | 507 | 18 | -0.05 | 72 | 103 | 101 | 105 | 56 | 109 | 110 | 52 | 99 | 57 | 109 | 42 | \$26.00 | |
| WOODFORD | 300 | 67 | 315 | 61 | 88 | 15 | 0.00 | 567 | 23 | -0.02 | 79 | 101 | 103 | 106 | 65 | 102 | 103 | 63 | 104 | 68 | 108 | 53 | \$18.00 | |
| YOLO | 436 | 66 | 411 | 61 | 172 | 25 | 0.09 | 749 | 41 | 0.13 | 78 | 104 | 102 | 105 | 64 | 105 | 111 | 61 | 106 | 67 | 106 | 53 | \$26.00 | |

All Australian Breeding Value data is sourced from DataGene, December 2020.

Genetics Australia has endeavoured to present all data as made available.

*Prices are exclusive of GST and are effective from the 7th December 2020, and are subject to change without notice.

MIRABELL SOUND SYSTEM EX94

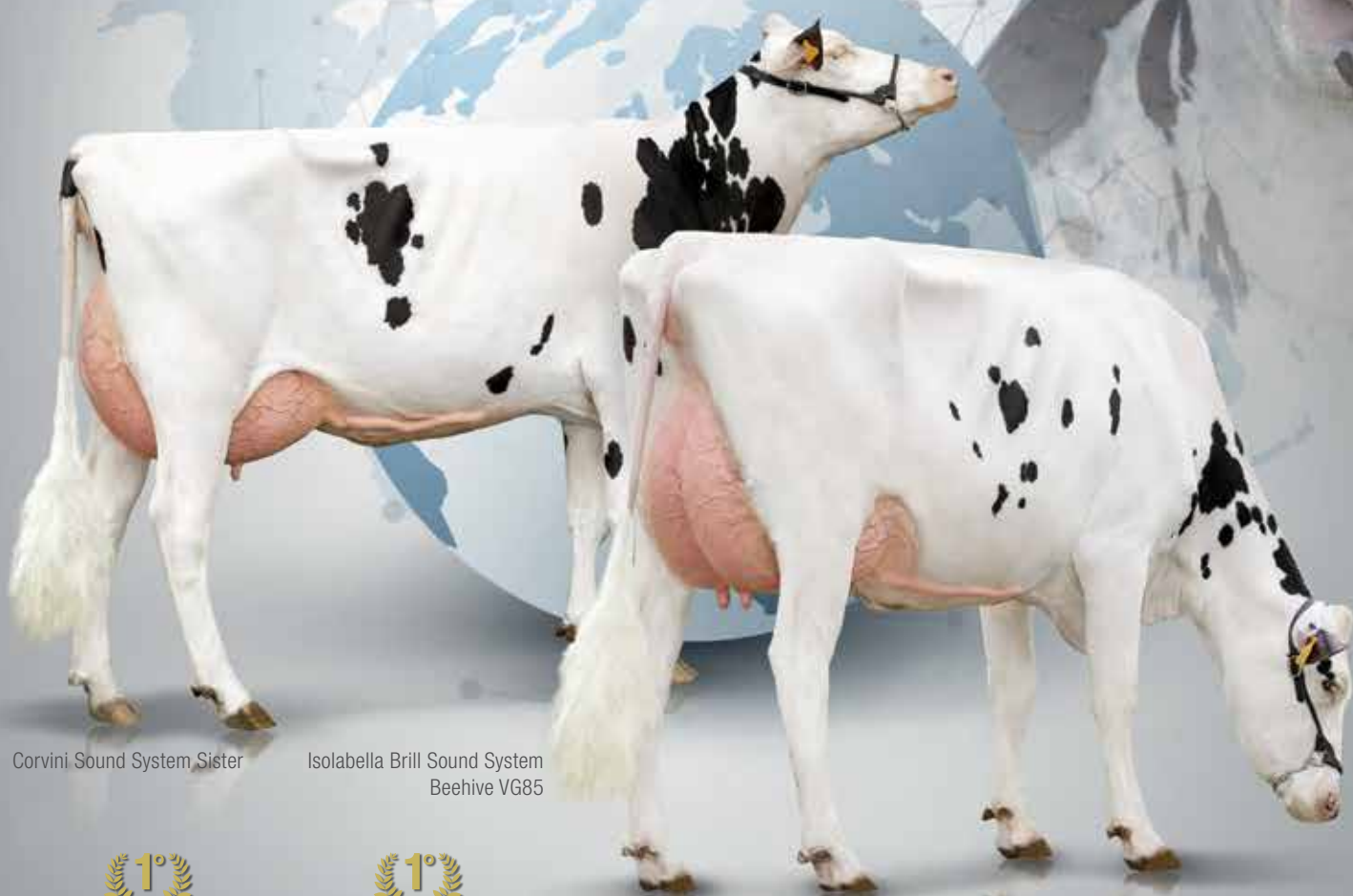
Sound System



IT017991512628 - 543H000086 - aAa 234 - TV TL TY

SILVER x SUPERSIRE VG86 x SHOTTLE EX90 x GOLDWYN EX90

...Sounds good,
very good!



Corvini Sound System Sister

Isolabella Brill Sound System
Beehive VG85



+4,193



GPFT



+3,560



GLPI

+2,744



GTPI

+1,447



ISSET

+154



RZG

*August 2020 Figures

INSEME
ITALIAN GENETICS

www.inseme.it • [Facebook](#) Inseme Genetics • [Instagram](#) InsemeGenetics

Chart Toppers

CFP-PP

#1 BPI "PP" in AUS

A2P2-PP

#1 GLA-LPI "PP" in CDN

NIPIT-PP

#2 BPI "PP" in AUS

#1 GTPI "PP" in USA

CFP-PP

A2P2-PP

NIPIT-PP

Genet^{cs} AUSTRALIA
Breeding better Australian herds

Genetics Australia Co-Operative Limited

PO Box 195, BACCHUS MARSH, VIC 3340, AUSTRALIA

P: +61 3 5367 3888 **F:** + 61 3 5367 5100 **Freecall:** 1800 039 047

www.genaust.com.au

ORDERS & CUSTOMER SERVICE

T: 03 5367 3888

E: orders@genaust.com.au

Anthony Shelly
CHIEF EXECUTIVE OFFICER

M: 0408 529 410

E: ashelly@genaust.com.au

Nigel Semmens
BEEF SALES MANAGER

M: 0439 417 941

E: nsemmens@genaust.com.au

Greg Tiller
REGIONAL SALES MANAGER

North Victoria, Riverina NSW,
South Australia

M: 0407 366 985

E: gtiller@genaust.com.au

Andrew Medhurst
SALES REPRESENTATIVE

Northern Victoria & Far South Coast NSW

M: 0417 575 932

E: amedhurst@genaust.com.au

Gerard Collins
SALES REPRESENTATIVE

Northern Victoria

M: 0428 387 276

E: gcollins@genaust.com.au

Ash Hogg
SALES REPRESENTATIVE

Northern Victoria

M: 0407 842 144

E: ahogg@genaust.com.au

Rodney Brooks
REGIONAL SALES MANAGER

Western Victoria, South East South
Australia, South & North Coast NSW

M: 0408 741 034

E: rbrooks@genaust.com.au

Graham Heaver
SALES REPRESENTATIVE

Western Victoria, South Australia
& Tasmania

M: 0419 178 359

E: gheaver@genaust.com.au

Coleman Baulch
SALES REPRESENTATIVE

Western Victoria & Tasmania

M: 0429 473 563

E: cbaulch@genaust.com.au

Gerard Brislin
REGIONAL SALES MANAGER

Gippsland & Tasmania

M: 0408 107 019

E: gbrislin@genaust.com.au

Ian Noakes
SALES REPRESENTATIVE

Western Australia

M: 0409 297 805

E: inoakes@genaust.com.au

John Harle
SALES REPRESENTATIVE

Queensland & NSW

T: 07 3818 0564

E: jharle@genaust.com.au