

SIRE DIRECTORY

2020 - AUGUST SIRE SUMMARY



- **HOLSTEIN**
- **JERSEY**
- **RED BREEDS**

CONTENTS

HOLSTEIN DATA PANELS 2-3

HOLSTEIN TRAIT LEADERS 4-5

HOLSTEIN 6-17

- 6 AMALFI / COLUMBUS / DALKING / DATASET
- 7 DOMINATION / DONK / ENDGAME / ETHOS
- 8 FASHIONABULL / FRANKLAND / GILES / GOLDWARRIOR
- 9 GURUBOB / KARAT / KARDEW / KINGTUT
- 10 KOBE / LAGER / LASTIN / LAUTA
- 11 LAUTETT / LOGANX / LOSTEM / MAEBULL
- 12 MASNAH / MENCHOV / MICROCHIP / MRMAGIC
- 13 PEMBERTON / PILBARA / PINJARRA / POWERWAVE
- 14 RAZ / REGINALD / REXXP / RYOB
- 15 SAMARIA / SHILA / SILVERLINE / SILVERSTAR
- 16 SINGULAR / SONDALO / SUPERDAVE / SUPERDUDE
- 17 SWEETSPOT / TEXMEX / TIRANO / WIFI

JERSEY/RED BREEDS DATA PANEL 18

JERSEY 19-21

- 19 ASKN / AUSSIEGOLD / BESTYET / BOOST
- 20 BORUNG / DOUGGAN / HIPWOOD / INVINCIBLE
- 21 MANLY / MRFERTILITY / PICKETT / TAHBILK
- 22 TYBALT / VALENBLAST / VICKS / ARBCAESAR

COLOURED BREEDS 22-24

- 23 ARBCYGNET / ARBLINDT / ARBOSCAR / ARBSCAREBEAR
- 24 ARBEDDIE, ARBMARNUS, ARBNATHAN, ARBNINJAGO,
ARBPONGA, ARBTEDEBEAR, ARBYOGIBEAR

HOW TO READ AN ABV 25

DISCLAIMER: The content of this Catalogue is provided for information only. It is published with care and attention to accuracy, but Genetics Australia accepts no liability if, for any reason the information is inaccurate or out of date whether negligent or otherwise.

Limitation of Liability: Genetics Australia warrants that it has clear title to the products sold and that all semen processed in its laboratory is processed under rigid quality controls. Since Genetics Australia does not control conditions under which its products are used it does not give, and its agents and employees are forbidden to give, any warranty express or implied as to the conception rate quality or productiveness or the results which may be obtained by the use of any product sold or in connection with any techniques recommended. Genetics Australia makes no other warranty of any kind whatsoever express or implied which extends beyond the description of its products. Where so permitted the liability of Genetics Australia for breach of a condition or warranty implied by statute is limited at Genetics Australia's option to the replacement or repair of the goods or the supply of equivalent goods or the cost of replacing or repairing the goods or of acquiring equivalent goods. So far as the law permits Genetics Australia shall not be liable in any way whatsoever for any indirect or consequential loss or loss of profit.

Sexed (sorted) semen: Artificial insemination straws that Genetics Australia offers for sale as sexed (sorted) semen using Sexing Technologies proprietary technology, shall only be used for single-use artificial insemination and not for in-vitro-fertilisation or embryo transfer.

Australian Genetics – World Class and proud of it.

Genetics Australia is an Australian dairy farmer owned and controlled Cooperative and was formed in 1958. There are few organisations around the world with a longer history of animal breeding and as the current Chairman I am very proud of what we have achieved.

I joined the Board in 2010 and became Chairman in 2016. Like my fellow Directors I am passionate about the continued development of the genetics best suited to our farming systems with the traits that can make dairy farming a sustainable and profitable business.

I milk 500 cows in Australia's largest dairy production State Victoria and in a region called Gippsland, about 2.5 hours east from the capital city Melbourne. In my own herd I have used genetics from around the world and find genetics developed by Genetics Australia to perform equally well to the best genetics that I can source from anywhere else. My herd is currently in the top 10 in Australia on our national ranking index the BPI.

The Genetics Australia breeding program has developed dairy genetics for Australia's diverse dairy regions, from hot topical regions in northern Australia to the more temperate in southern Australia. Cows bred by Genetics Australia bulls are milking in high feed input systems as well as low input pasture based systems. I am confident that Australian genetics will work as well for you as they have done for me.



Trevor Henry
Chairman – Genetics Australia



PRODUCTION

Bull ID	Polled	A2 Status	Pedigree	BPI	BPI Rel%	ASI	Protein (K)	Protein %	Milk (L)	Fat (Kg)	Fat %	Rel %	Daughters	Herds	Milk Speed	Temp	Likeability	Rel %	Cell Count	Mastitis Resistance	Rel %	Daughter Fertility	Rel %	Gestation Length	Rel %	Calving Ease	Rel %
AMALFI		A2	Fedora x Main Event	339	63	151	18	0.12%	453	39	0.28%	74	0	0	103	101	104	58	167	109	60	111	45	-5	70	101	68
COLUMBUS P	P	A12	GGHotspot x Contender	397	64	223	32	0.31%	600	33	0.11%	75	0	0	103	104	106	60	162	106	62	107	45	-1	64	102	63
DALKING		A22	Kingtut x Picola	291	68	242	31	0.25%	680	52	0.34%	79	0	0	98	99	102	65	168	105	69	99	52	3	75	100	76
DATASET		A22	Microchip x Halogen	272	69	167	20	0.29%	167	27	0.28%	79	0	0	101	102	102	68	162	107	69	101	57	-1	84	100	81
DOMINATION P	P	A22	Jeonimo x Monterey	316	64	166	18	0.26%	157	32	0.36%	75	0	0	102	102	103	59	147	102	61	107	46	-2	65	101	67
DONKAM		A22	Superhero x Palermo	307	68	168	28	0.17%	717	25	-0.09%	79	0	0	104	105	106	67	156	104	70	105	55	0	63	102	69
ENDGAME		A12	Superhero x Monterey	364	68	165	19	0.24%	221	32	0.32%	78	0	0	103	104	106	67	168	106	70	112	55	-1	68	102	70
ETHOS		A22	Persus x Eraser	355	67	158	28	0.24%	573	11	-0.19%	78	0	0	104	105	106	63	164	105	67	110	48	-2	66	105	73
FASHIONABULL		A12	Persus x Royalman	331	67	176	24	0.40%	90	11	0.11%	78	0	0	101	103	104	63	140	103	67	113	51	-3	68	103	77
FRANKLAND		A22	Contender x Powerball	322	68	144	28	0.11%	838	18	-0.25%	79	0	0	101	104	107	64	183	110	69	106	50	2	71	104	73
GILES		A22	JoSuper x Oman	332	80	243	36	0.29%	762	40	0.10%	90	72	25	103	104	106	78	148	104	91	105	60	-10	92	105	85
GOLDWARRIOR		A22	Liquidgold x O-Man	320	78	210	25	0.44%	73	24	0.30%	88	55	18	99	101	102	73	157	104	89	108	69	-1	94	105	87
GURUBOB		A22	Mystic x Powerball	272	67	132	31	0.13%	900	3	-0.51%	79	0	0	102	103	105	61	143	105	69	110	51	-3	64	103	65
KARAT		A12	Complete x Slam Dunk	414	62	169	19	0.22%	256	37	0.37%	73	0	0	103	104	106	57	176	109	58	114	41	-4	62	100	57
KARDEW		A22	Complete x Slam Dunk	391	62	192	27	0.20%	618	37	0.16%	73	0	0	103	104	106	57	165	107	59	109	42	-5	62	102	57
KINGTUT		A22	Kingboy x Planet	305	85	230	38	0.06%	1289	53	-0.02%	94	131	28	94	97	102	84	179	108	95	105	78	1	97	99	93
KOBE		A12	Vador x Silver	313	67	175	21	0.31%	161	28	0.30%	79	0	0	100	100	103	60	155	108	70	111	50	-5	65	105	68
LAGER		A22	Persus x Salvino	310	64	146	24	0.19%	519	18	-0.07%	74	0	0	102	101	104	59	152	103	63	113	45	-2	64	104	63
LASTIN		A12	Fedora x Jett	402	63	221	30	0.30%	511	37	0.22%	74	0	0	103	102	106	58	156	106	60	109	43	-5	63	102	65
LAUTA		A22	Percy x Powerball	357	63	196	28	0.31%	415	25	0.11%	74	0	0	103	102	106	58	152	107	59	109	44	-5	64	101	65
LAUTETT		A12	Jett x Davinci	246	66	149	34	0.03%	1212	18	-0.49%	77	0	0	101	102	108	63	140	101	66	104	50	-9	85	104	78
LOGANX P	P	A12	Powerball x Davinci	311	69	183	33	0.26%	701	15	-0.21%	79	0	0	101	100	105	66	137	103	69	109	55	-2	91	104	86
LOSTEM P	P	A22	Fedora x Powerball	348	63	200	38	0.23%	967	18	-0.34%	73	0	0	103	100	106	58	143	104	59	110	44	-6	63	102	85
MAEBULL		A22	Palermo x Shottle	303	89	117	18	0.14%	380	18	0.03%	98	561	93	101	101	104	90	191	109	98	110	93	1	99	102	99
MASNAH		A22	MVP x Buddha	366	78	330	34	0.68%	-80	50	0.77%	89	99	17	104	106	108	74	109	97	93	99	61	-1	98	102	97
MENGHOV		A22	Palermo x O-Man	177	87	70	20	-0.02%	783	4	-0.42%	96	146	38	102	103	106	89	133	98	95	107	92	0	96	105	92
MICROCHIP		A22	Picola x Goldchip	328	90	100	14	0.02%	474	29	0.13%	98	470	67	104	103	104	93	165	106	98	96	92	-4	99	103	98
MRMAGIC		A22	Magictouch x Muscadet	328	64	165	20	0.40%	-53	14	0.23%	74	0	0	104	103	105	58	143	103	61	110	47	-2	64	102	60
PENBERTON		A22	Persus x Jaczy	388	67	205	27	0.38%	266	24	0.18%	78	0	0	102	103	105	63	175	107	68	109	50	0	79	103	81
PILBARA		A22	Persus x Powerball	394	66	219	34	0.34%	591	24	-0.02%	77	0	0	103	103	106	61	159	107	67	110	47	-2	70	106	68
PINJARRA		A22	Persus x Megasire	327	66	160	14	0.30%	-65	32	0.50%	77	0	0	103	102	105	62	163	107	67	109	48	-3	72	104	69
POWERWAVE		A22	Powerball x Wyman	276	69	211	36	0.35%	643	16	-0.17%	79	0	0	101	99	103	69	124	101	70	107	57	-1	90	103	84
RAZ		A22	JoSuper x Roumare	191	76	102	21	-0.07%	921	26	-0.19%	86	58	17	103	103	106	72	131	101	90	104	61	-3	94	100	88
REGINALD		A22	Modesty x Firstclass	270	67	100	19	0.03%	638	18	-0.13%	77	0	0	104	103	104	63	149	105	66	109	53	-3	68	102	70
REXP P	P	A22	Powerball P x Planet	257	67	167	32	0.20%	786	15	-0.27%	75	25	7	103	103	105	67	126	99	83	105	57	-2	97	103	93
RYOBI P	P	A22	Powerball x Jett	333	66	156	32	0.10%	985	18	-0.34%	76	0	0	100	104	107	61	163	106	62	110	49	-8	63	103	63
SAMARIA P	P	A12	Jeonimo x Booth	372	60	196	34	0.29%	685	18	-0.17%	72	0	0	101	102	104	54	163	106	56	111	39	-2	65	101	65
SHILA		A12	Wookie x Buddha	390	64	270	24	0.57%	-216	45	0.78%	75	0	0	101	103	104	60	134	105	61	107	47	-3	65	101	65
SILVERLINE		A12	Silver x Fever	351	71	259	35	0.24%	811	56	0.31%	79	34	12	105	102	106	72	128	100	85	98	60	1	99	101	98
SILVERSTAR		A12	Silverline x Wyman	324	67	195	21	0.27%	259	41	0.43%	78	0	0	103	102	104	64	139	104	68	105	49	0	83	103	79
SINGULAR	RC	A22	Número Uno x Shamrock	323	75	114	7	0.13%	11	37	0.52%	86	62	2	102	102	105	75	174	105	90	112	67	0	85	104	79
SONDALO		A12	Jeonimo x Main Event	394	64	190	24	0.19%	511	43	0.31%	75	0	0	103	100	104	59	167	106	61	113	46	-5	65	103	67
SUPERDAVE		A22	Superhero x Doorman	369	68	232	22	0.49%	-151	37	0.63%	79	0	0	101	104	105	66	162	105	70	105	55	-3	98	101	96
SUPERDUDE		A12	Supersire x Goldwyn	335	68	199	32	0.11%	975	42	0.01%	75	20	5	102	102	104	72	170	104	81	107	64	-2	91	102	88
SWEETSPOT		A22	Hotspot x Superhero	359	64	182	28	0.22%	629	27	0.00%	75	0	0	104	104	105	58	146	101	61	109	43	-1	64	102	64
TEXMEX		A12	Vador x Buddha	346	67	230	19	0.37%	-11	53	0.77%	79	0	0	101	100	102	60	141	105	69	108	50	0	72	103	68
TIRANO P	P	A12	Jeonimo x Main Event	373	62	179	20	0.24%	290	37	0.36%	73	0	0	103	101	104	57	162	105	59	110	44	-6	65	102	65
WIFI		A12	Hotspot x Alltime	372	64	218	28	0.36%	326	32	0.26%	75	0	0	101	104	105	58	157	105	62	106	45	-1	65	103	64

TYPE		Overall Type	Mammary System	Dairy Strength	Rump	Feet & Legs	Stature	Bone Quality	Angularity	Muzzle Width	Body Depth	Chest Width	Pin Width	Pin Set	Loin Strength	Heel Depth	Rear Leg Set	Rear Leg View	Udder Texture	Udder Depth	Fore Attach	Rear Udder Height	Rear Udder Width	Centre Ligament	Teat Place Front	Teat Place Rear	Teat Length	Rel %	Survival	Rel %	Heat Tolerance	Rel %	Feed Saved	Rel %	
Bull ID		106	106	100	101	102	105	101	100	106	98	100	100	98	103	103	101	104	102	106	103	107	102	104	101	101	100	100	54	110	47	98	38	-69	30
AMALFI		104	104	100	104	98	104	104	101	99	99	99	102	106	99	103	96	98	104	104	103	107	100	102	100	101	101	101	57	110	48	89	38	-11	31
COLUMBUS P		102	105	101	108	93	104	102	97	100	101	102	107	105	100	100	111	97	103	99	98	103	106	108	102	105	100	64	106	53	98	38	-147	34	
DALKING		98	101	93	102	96	101	102	93	99	91	95	104	102	98	98	104	97	102	103	96	101	99	104	103	103	96	65	105	54	94	38	80	34	
DATASET		108	110	100	101	99	110	108	104	96	96	95	109	93	104	104	102	99	112	108	105	107	102	111	104	103	102	56	111	48	96	38	-23	31	
DOMINATION P		105	102	103	103	96	104	98	98	104	102	105	105	99	101	100	101	102	100	104	105	100	103	102	97	100	100	63	110	56	94	38	-90	33	
DONK		105	107	100	99	98	107	103	97	98	99	102	102	96	98	102	101	104	104	107	106	106	102	107	102	103	96	63	112	56	99	38	-119	33	
ENDGAME		105	108	98	103	100	104	103	96	95	97	100	98	100	102	102	100	102	104	105	101	107	105	108	104	106	95	62	111	51	95	38	-64	33	
ETHOS		100	105	97	104	103	106	102	94	97	95	102	102	103	99	105	103	101	101	102	101	105	100	105	104	106	95	63	107	53	94	38	-40	34	
FASHIONABULL		108	106	101	105	98	110	100	99	100	97	101	100	100	106	100	98	96	100	110	105	106	98	102	110	101	101	64	112	52	96	38	-99	34	
FRANKLAND		103	97	105	103	102	102	96	101	105	103	107	99	99	102	96	96	105	94	95	97	100	104	94	95	92	104	79	107	67	92	38	-145	41	
GILES		105	100	99	99	102	105	104	104	100	96	96	101	97	98	104	101	104	105	103	101	94	96	104	106	99	98	69	106	63	95	38	-85	36	
GOLDWARRIOR		98	102	96	106	93	101	98	98	97	97	98	107	105	102	100	109	98	102	100	97	101	104	102	102	99	100	60	110	51	93	38	-4	33	
GURUBOB		106	110	97	97	100	105	98	95	104	96	102	100	95	99	101	100	105	100	109	110	109	101	105	106	104	94	51	112	43	96	38	-32	29	
KARAT		106	110	99	98	101	104	102	98	102	96	100	103	97	99	100	97	107	103	107	106	109	103	106	107	106	96	51	112	44	93	38	-31	29	
KARDEW		102	106	98	102	97	105	105	92	102	97	99	108	96	98	104	111	100	106	100	96	103	108	108	103	101	100	85	107	71	99	38	-145	43	
KINGTUT		101	102	96	98	101	104	97	92	103	94	101	96	101	93	98	99	104	99	105	101	102	99	104	102	99	98	59	110	51	98	38	-51	32	
KOBE		98	104	94	100	96	102	103	93	100	93	99	99	96	95	102	103	96	101	106	100	104	99	105	104	102	93	59	107	48	99	38	-39	32	
LAGER		107	107	99	100	101	104	100	98	103	97	99	104	95	96	102	97	102	101	106	107	110	102	103	100	99	100	54	111	46	96	38	37	30	
LASTIN		106	105	96	104	96	109	101	97	99	93	95	103	101	102	99	105	99	105	108	102	107	101	104	101	101	104	55	111	46	96	38	-68	30	
LAUTA		102	104	100	103	101	106	95	97	105	98	103	101	106	100	98	98	100	94	104	101	108	102	100	100	98	99	59	112	50	96	38	-86	32	
LAUTETT		99	105	92	101	93	104	103	96	97	92	90	104	101	97	100	107	93	103	106	102	109	99	103	100	102	100	63	109	55	93	38	53	33	
LOGANX P		104	107	98	101	96	105	101	98	103	97	97	106	98	99	102	101	99	106	105	104	109	102	105	102	103	103	54	110	46	95	38	-68	30	
LOSTEM P		103	100	99	100	100	99	90	96	98	99	103	101	99	97	98	101	100	99	104	106	101	100	96	96	94	102	86	109	89	102	38	15	43	
MAEBULL		103	107	105	92	107	103	98	102	102	103	105	99	92	97	106	98	104	101	101	100	101	109	105	107	109	89	73	107	65	93	38	-143	38	
MASNAH		101	99	100	110	93	103	93	98	100	100	102	106	114	105	100	107	92	98	99	104	97	100	96	97	99	104	84	106	88	99	38	-76	43	
MENCHOV		97	99	92	106	92	94	104	96	95	92	94	102	105	101	96	107	97	99	99	95	102	97	103	102	102	102	90	105	76	96	38	178	45	
MICROCHIP		100	106	97	99	100	102	99	93	99	94	100	99	95	96	100	100	101	96	108	104	107	104	101	102	98	99	57	108	48	98	38	17	31	
MRMAGIC		104	106	96	102	102	105	105	97	99	94	96	105	100	98	103	98	100	102	107	103	106	102	105	102	104	95	62	109	52	93	38	-34	33	
PEMBERTON		102	107	95	101	94	103	110	98	94	95	93	105	95	101	102	106	98	104	105	100	108	104	106	103	107	91	61	110	50	94	38	9	33	
PILBARA		101	105	96	101	96	104	105	94	97	95	101	103	98	95	100	106	98	102	106	102	104	101	106	103	107	92	61	108	50	99	38	-2	33	
PINJARRA		100	99	98	100	94	104	102	99	97	99	98	101	98	99	103	107	97	103	101	98	103	94	101	100	102	100	65	106	58	90	38	-14	34	
POWERWAVE		110	103	108	105	98	108	101	101	102	106	106	103	101	105	103	103	97	101	102	103	106	98	100	101	103	96	73	109	63	89	38	-218	38	
RAZ		100	105	91	95	99	101	108	91	95	91	93	92	93	94	98	99	105	98	111	106	112	98	99	99	98	100	61	110	53	103	38	113	33	
REGINALD		100	105	97	102	92	100	107	101	93	98	95	103	101	105	105	113	97	99	101	98	102	99	100	101	103	98	67	108	58	93	38	54	35	
REXP P		99	100	94	102	97	103	102	97	94	93	98	100	104	102	100	100	100	100	106	101	98	102	99	101	99	97	59	112	50	98	38	-19	32	
RYOBIP		103	107	94	102	97	103	102	97	94	93	98	100	104	102	100	100	100	100	106	103	109	106	101	99	97	97	97	59	112	50	98	38	-19	32
SAMARIA P		101	102	95	105	98	100																												

What are your

PROFITABILITY



Name	BPI / Rel%
KARAT	414 / 62
LASTIN	402 / 63
COLUMBUS P	397 / 64
PILBARA	394 / 66
SONDALO	394 / 64
KARDEW	391 / 62
SHILA	390 / 64
PEMBERTON	388 / 67
TIRANO P	373 / 62
SAMARIA P	372 / 60

DAUGHTER FERTILITY



Name	D Fert / Rel%
KARAT	114 / 41
SONDALO	113 / 46
FASHIONABULL	113 / 51
LAGER	113 / 45
ENDGAME	112 / 55
SINGULAR	112 / 67
SAMARIA P	111 / 39
AMALFI	111 / 45
KOBE	111 / 50
PILBARA	110 / 47

SEMEN FERTILITY



Name	Semen Fert
POWERWAVE	2.37%
DONK	2.13%
KINGTUT	2.11%
SUPERDAVE	1.60%
ENDGAME	1.56%
SUPERDUDE	1.49%
SILVERLINE	1.40%
GOLDWARRIOR	0.76%
SINGULAR	0.73%
MENCHOV	0.69%

POLLED



Name	BPI / Rel%
COLUMBUS P	397 / 64
TIRANO P	373 / 62
SAMARIA P	372 / 60
LOSTEM P	348 / 63
RYOBI P	333 / 66
DOMINATION P	316 / 64
LOGANX P	311 / 69
REXX P	257 / 67

PRODUCTION



Name	ASI / Rel%
MASNAH	330 / 89
SHILA	270 / 75
SILVERLINE	259 / 79
GILES	243 / 90
DALKING	242 / 79
SUPERDAVE	232 / 79
KINGTUT	230 / 94
TEXMEX	230 / 79
COLUMBUS	223 / 75
LASTIN	221 / 74

CALVING EASE



Name	C Ease / Rel%
PILBARA	106 / 68
KOBE	105 / 68
ETHOS	105 / 73
GOLDWARRIOR	105 / 87
GILES	105 / 85
MENCHOV	105 / 92
FRANKLAND	104 / 73
PINJARRA	104 / 69
SINGULAR	104 / 79
LOGANX	104 / 86

breeding goals?

TYPE



Name	Type	Mam Rel%
DOMINATION	108	110 56
SILVERLINE	107	110 69
KARDEW	106	110 51
KARAT	106	110 51
TIRANO	105	109 53
ETHOS	105	108 62
LASTIN	107	107 54
WIFI	106	107 56
ENDGAME	105	107 63
LOSTEM	104	107 54

LONGEVITY



Name	Survival / Rel%
SUPERDUDE	114 / 64
FRANKLAND	112 / 52
LAUTETT	112 / 50
RYOBI	112 / 50
KARDEW	112 / 44
ENDGAME	112 / 56
KARAT	112 / 43
ETHOS	111 / 51
LASTIN	111 / 46
SWEETSPOT	111 / 46

DAIRY STRENGTH



Name	Dairy Strg / Rel%
RAZ	108 / 73
MASNAH	105 / 73
GILES	105 / 79
DONK	103 / 63
SWEETSPOT	102 / 55
DALKING	101 / 64
FRANKLAND	101 / 64
MENCHOV	100 / 84
ENDGAME	100 / 63
AMALFI	100 / 54

MASTITIS RESISTANCE



Name	M. Res / Rel%
FRANKLAND	110 / 69
KARAT	109 / 58
AMALFI	109 / 60
MAEBULL	109 / 98
KINGTUT	108 / 95
KOBE	108 / 70
KARDEW	107 / 59
PILBARA	107 / 67
PEMBERTON	107 / 68
LAUTA	107 / 59

FEED SAVED



Name	Feed Saved / Rel%
MICROCHIP	178 / 45
REGINALD	113 / 33
SINGULAR	102 / 34
DATASET	80 / 34
SHILA	76 / 31
SAMARIA	71 / 28
REXXP	54 / 35
LOGANX	53 / 33
TEXMEX	48 / 32
LASTIN	37 / 30

HEAT TOLERANCE



Name	Heat Tol. / Rel%
REGINALD	103 / 38
MAEBULL	102 / 38
SUPERDUDE	102 / 38
SINGULAR	101 / 38
TIRANO	99 / 38
PINJARRA	99 / 38
LAGER	99 / 38
MENCHOV	99 / 38
ENDGAME	99 / 38
KINGTUT	99 / 38

Carenda Amalfi

AMALFI

12FFSAL

Fedora x Main Event

A22

BPI

339/63%

Production							Workability		
ASI	kgP	P%	Milk	kgF	F%	Rel%	M Speed	Temp	Like
151	18	0.12%	453	39	0.28%	74	103	101	104

Health							
Cell Count	Mastitis Res	Dtr Fertility	Gestation	Calving Ease	Survival	Heat Tol	Feed Saved
167 / 65	109 / 60	111 / 45	-5 / 70	101 / 68	110 / 47	98 / 38	-69 / 30

Type							
Overall Type	106	Stature	105	Pin Set	98	Fore Attach	103
Mammary	106	Bone Quality	101	Loin Strength	103	Rear Udder Height	107
Feet & Legs	102	Angularity	100	Heel Depth	103	Rear Udder Width	102
Rump	101	Muzzle Width	106	Rear Leg Set	101	Centre Ligament	104
Dairy Strength	100	Body Depth	98	Rear Leg Rear View	104	Teat Place Front	101
		Chest Width	100	Udder Texture	102	Teat Place Rear	101
		Pin Width	100	Udder Depth	106	Teat Length	100

Sire, FEDORA

Sire: Sandy-Valley Fedora

Dam: Carenda Mainevent Veepee GP82

Source: Carenda Holsteins, Boyanup, WA

DOB: 07/02/2019

HB: 2069506

Bundalong Hotspot Columbus

COLUMBUS P

12FFSAE

GGIHotspot x Contender

A12

BPI

397/64%

Production							Workability		
ASI	kgP	P%	Milk	kgF	F%	Rel%	M Speed	Temp	Like
223	32	0.31%	600	33	0.11%	75	103	104	106

Health							
Cell Count	Mastitis Res	Dtr Fertility	Gestation	Calving Ease	Survival	Heat Tol	Feed Saved
162 / 66	106 / 62	107 / 45	-1 / 64	102 / 63	110 / 48	89 / 38	-11 / 31

Type							
Overall Type	104	Stature	104	Pin Set	106	Fore Attach	103
Mammary	104	Bone Quality	104	Loin Strength	99	Rear Udder Height	107
Feet & Legs	98	Angularity	101	Heel Depth	103	Rear Udder Width	100
Rump	104	Muzzle Width	99	Rear Leg Set	96	Centre Ligament	102
Dairy Strength	100	Body Depth	99	Rear Leg Rear View	98	Teat Place Front	100
		Chest Width	99	Udder Texture	104	Teat Place Rear	101
		Pin Width	102	Udder Depth	104	Teat Length	101

Sire, GGIHOTSPOT P

Sire: Wil Hotspot P

Dam: Bundalong Contender Waves 3667 GP84

Source: Bundalong Holsteins, Kongwak, VIC

DOB: 12/07/2019

HB: 2094686

Hindlee Kingtut Dallas 1747

DALKING

12FFPBF

Kingtut x Picola

A22

BPI

291/68%

Production							Workability		
ASI	kgP	P%	Milk	kgF	F%	Rel%	M Speed	Temp	Like
242	31	0.25%	680	52	0.34%	79	98	99	102

Health							
Cell Count	Mastitis Res	Dtr Fertility	Gestation	Calving Ease	Survival	Heat Tol	Feed Saved
168 / 70	105 / 69	99 / 52	3 / 75	100 / 76	106 / 53	98 / 38	-147 / 34

Type							
Overall Type	102	Stature	104	Pin Set	105	Fore Attach	98
Mammary	105	Bone Quality	102	Loin Strength	105	Rear Udder Height	103
Feet & Legs	93	Angularity	97	Heel Depth	100	Rear Udder Width	106
Rump	108	Muzzle Width	100	Rear Leg Set	111	Centre Ligament	108
Dairy Strength	101	Body Depth	101	Rear Leg Rear View	97	Teat Place Front	102
		Chest Width	102	Udder Texture	103	Teat Place Rear	105
		Pin Width	107	Udder Depth	99	Teat Length	100

DALKING

Sire: Rengaw Redmaw KB 9975

Dam: Hindlee Picola Dallas 14101 GP80

Source: Hindlee Holsteins, Smithton, TAS

DOB: 07/09/2017

HB: 2004240

Warramont Microchip Data

DATASET

12FFPAJ

Microchip x Halogen

A22

BPI

272/69%

✓SEMEN Fertility +0.22%

Production							Workability		
ASI	kgP	P%	Milk	kgF	F%	Rel%	M Speed	Temp	Like
167	20	0.29%	167	27	0.28%	79	101	102	102

Health							
Cell Count	Mastitis Res	Dtr Fertility	Gestation	Calving Ease	Survival	Heat Tol	Feed Saved
162 / 71	107 / 69	101 / 57	-1 / 84	100 / 81	105 / 54	94 / 38	80 / 34

Type							
Overall Type	98	Stature	101	Pin Set	102	Fore Attach	96
Mammary	101	Bone Quality	102	Loin Strength	98	Rear Udder Height	101
Feet & Legs	96	Angularity	93	Heel Depth	98	Rear Udder Width	99
Rump	102	Muzzle Width	99	Rear Leg Set	104	Centre Ligament	104
Dairy Strength	93	Body Depth	91	Rear Leg Rear View	97	Teat Place Front	104
		Chest Width	95	Udder Texture	102	Teat Place Rear	103
		Pin Width	104	Udder Depth	103	Teat Length	96

DATASET

Sire: Hindlee Picola Goldchipdream 1418

Dam: Warramont Halogen Daybreak 4th GP83

Source: Warramont Holsteins, Mt Gambier, SA

DOB: 01/02/2017

HB: 1992326

Rockwella Farm Jeronimo Dom

DOMINATION P

12FFSBB A22

Jeronimo x Monterey

BPI 316/64%

Sire: ABS Jeronimo
 Dam: Tarinka Park Monterey Deanne VG88
 Source: Rockwella Farm Holsteins, Yankalilla, SA
 DOB: 01/04/2019 HB: 2073180

Production							Workability		
ASI	kgP	P%	Milk	kgF	F%	Rel%	M Speed	Temp	Like
166	18	0.26%	157	32	0.36%	75	102	102	103

Health							
Cell Count	Mastitis Res	Dtr Fertility	Gestation	Calving Ease	Survival	Heat Tol	Feed Saved
147 / 66	102 / 61	107 / 46	-2 / 65	101 / 67	111 / 48	96 / 38	-23 / 31

Type							
Overall Type	108	Stature	110	Pin Set	93	Fore Attach	105
Mammary	110	Bone Quality	108	Loin Strength	104	Rear Udder Height	107
Feet & Legs	99	Angularity	104	Heel Depth	104	Rear Udder Width	102
Rump	101	Muzzle Width	96	Rear Leg Set	102	Centre Ligament	111
Dairy Strength	100	Body Depth	96	Rear Leg Rear View	99	Teat Place Front	104
		Chest Width	95	Udder Texture	112	Teat Place Rear	103
		Pin Width	109	Udder Depth	108	Teat Length	102



Warramont Superhero Donk

DONK

12FFRBA A22

Superhero x Palermo

BPI 307/68%

✓ **SEMEN Fertility**
+2.13%

Sire: Endco Superhero-ET
 Dam: Warramont Palermo Dawn-ET
 Source: Warramont Holsteins, Mt Gambier, SA
 DOB: 10/03/2018 HB: 2047091

Production							Workability		
ASI	kgP	P%	Milk	kgF	F%	Rel%	M Speed	Temp	Like
168	28	0.17%	717	25	-0.09%	79	104	105	106

Health							
Cell Count	Mastitis Res	Dtr Fertility	Gestation	Calving Ease	Survival	Heat Tol	Feed Saved
156 / 70	104 / 70	105 / 55	0 / 63	102 / 69	110 / 56	94 / 38	-90 / 33

Type							
Overall Type	105	Stature	104	Pin Set	99	Fore Attach	105
Mammary	102	Bone Quality	98	Loin Strength	101	Rear Udder Height	100
Feet & Legs	96	Angularity	98	Heel Depth	100	Rear Udder Width	103
Rump	103	Muzzle Width	104	Rear Leg Set	101	Centre Ligament	102
Dairy Strength	103	Body Depth	102	Rear Leg Rear View	102	Teat Place Front	97
		Chest Width	105	Udder Texture	100	Teat Place Rear	100
		Pin Width	105	Udder Depth	104	Teat Length	100



Winaview Superhero Avenger

ENDGAME

12FFRBD A12

Superhero x Monterey

BPI 364/68%

✓ **SEMEN Fertility**
+1.56%

Sire: Endco Superhero
 Dam: Winaview Monterey Alicia 1264 GP84
 Source: Winaview Holsteins, Warragul, VIC
 DOB: 19/09/2018 HB: 2052184

Production							Workability		
ASI	kgP	P%	Milk	kgF	F%	Rel%	M Speed	Temp	Like
165	19	0.24%	221	32	0.32%	78	103	104	106

Health							
Cell Count	Mastitis Res	Dtr Fertility	Gestation	Calving Ease	Survival	Heat Tol	Feed Saved
168 / 70	106 / 70	112 / 55	-1 / 68	102 / 70	112 / 56	99 / 38	-119 / 33

Type							
Overall Type	105	Stature	107	Pin Set	96	Fore Attach	106
Mammary	107	Bone Quality	103	Loin Strength	98	Rear Udder Height	106
Feet & Legs	98	Angularity	97	Heel Depth	102	Rear Udder Width	102
Rump	99	Muzzle Width	98	Rear Leg Set	101	Centre Ligament	107
Dairy Strength	100	Body Depth	99	Rear Leg Rear View	104	Teat Place Front	102
		Chest Width	102	Udder Texture	104	Teat Place Rear	103
		Pin Width	102	Udder Depth	107	Teat Length	96



Redmaw Perseus Ethos

ETHOS

12FFRAM A22

Perseus x Eraser

BPI 355/67%

Sire: Westcoast Perseus
 Dam: Rengaw Redmaw Erasjanea GP83
 Source: Redmaw Holsteins, Lockington, VIC
 DOB: 19/06/2018 HB: 2045152

Production							Workability		
ASI	kgP	P%	Milk	kgF	F%	Rel%	M Speed	Temp	Like
158	28	0.24%	573	11	-0.19%	78	104	105	106

Health							
Cell Count	Mastitis Res	Dtr Fertility	Gestation	Calving Ease	Survival	Heat Tol	Feed Saved
164 / 69	105 / 67	110 / 48	-2 / 66	105 / 73	111 / 51	95 / 38	-64 / 33

Type							
Overall Type	105	Stature	104	Pin Set	100	Fore Attach	101
Mammary	108	Bone Quality	103	Loin Strength	102	Rear Udder Height	107
Feet & Legs	100	Angularity	96	Heel Depth	102	Rear Udder Width	105
Rump	103	Muzzle Width	95	Rear Leg Set	100	Centre Ligament	108
Dairy Strength	98	Body Depth	97	Rear Leg Rear View	102	Teat Place Front	104
		Chest Width	100	Udder Texture	104	Teat Place Rear	106
		Pin Width	98	Udder Depth	105	Teat Length	95



Illawambra Perseus Debonair

FASHIONABULL

Perseus x Royalman

12FFRAH

A12

BPI

331/67%

Production

ASI	kgP	P%	Milk	kgF	F%	Rel%	dtrs	herds	% RIP
176	24	0.40%	90	11	0.11%	78	101	103	104

Workability

M Speed	Temp	Like	dtrs	herds	63% rel
101	103	104			

Health

Cell Count	Mastitis Res	Dtr Fertility	Gestation	Calving Ease	Survival	Heat Tol	Feed Saved
140 / 69	103 / 67	113 / 51	-3 / 68	103 / 77	107 / 53	94 / 38	-40 / 34

Type

Overall Type	100	Stature	106	Pin Set	103	Fore Attach	101
Mammary	105	Bone Quality	102	Loin Strength	99	Rear Udder Height	105
Feet & Legs	103	Angularity	94	Heel Depth	105	Rear Udder Width	100
Rump	104	Muzzle Width	97	Rear Leg Set	103	Centre Ligament	105
Dairy Strength	97	Body Depth	95	Rear Leg Rear View	101	Teat Place Front	104
		Chest Width	102	Udder Texture	101	Teat Place Rear	106
		Pin Width	102	Udder Depth	102	Teat Length	95

Sire:	Westcoast Perseus		
Dam:	Illawambra Royal Debra GP84		
Source:	Illawambra Holsteins, Barrengarry, NSW		
DOB:	03/02/2018	HB:	2028885



Carenda Frankland

FRANKLAND

Contender x Powerball

12FFRAB

A22

BPI

322/68%

Production

ASI	kgP	P%	Milk	kgF	F%	Rel%	dtrs	herds	% RIP
144	28	0.11%	838	18	-0.25%	79	101	104	107

Workability

M Speed	Temp	Like	dtrs	herds	64% rel
101	104	107			

Health

Cell Count	Mastitis Res	Dtr Fertility	Gestation	Calving Ease	Survival	Heat Tol	Feed Saved
183 / 70	110 / 69	106 / 50	2 / 71	104 / 73	112 / 52	96 / 38	-99 / 34

Type

Overall Type	108	Stature	110	Pin Set	100	Fore Attach	105
Mammary	106	Bone Quality	100	Loin Strength	106	Rear Udder Height	106
Feet & Legs	98	Angularity	99	Heel Depth	100	Rear Udder Width	98
Rump	105	Muzzle Width	100	Rear Leg Set	98	Centre Ligament	102
Dairy Strength	101	Body Depth	97	Rear Leg Rear View	96	Teat Place Front	110
		Chest Width	101	Udder Texture	100	Teat Place Rear	101
		Pin Width	110	Udder Depth	110	Teat Length	101

Sire:	Mr Super Contender		
Dam:	Carenda Powerball Fayth VG85		
Source:	Carenda Holsteins, Boyanup, WA		
DOB:	01/03/2018	HB:	2030847



Wilara JoSuper Jo

GILES

JoSuper x Oman

12FFM15

A22

sexed available

BPI

332/80%



SEMEN Fertility
+0.57%

Production

ASI	kgP	P%	Milk	kgF	F%	Rel%	72 dtrs	25 herds	43% RIP
243	36	0.29%	762	40	0.10%	90	103	104	106

Workability

M Speed	Temp	Like	30 dtrs	13 herds	78% rel
103	104	106			

Health

Cell Count	Mastitis Res	Dtr Fertility	Gestation	Calving Ease	Survival	Heat Tol	Feed Saved
148 / 84	104 / 91	105 / 60	-10 / 92	105 / 85	107 / 67	92 / 38	-145 / 41

Type

Overall Type	103	Stature	102	Pin Set	99	Fore Attach	97
Mammary	97	Bone Quality	96	Loin Strength	102	Rear Udder Height	100
Feet & Legs	102	Angularity	101	Heel Depth	96	Rear Udder Width	104
Rump	103	Muzzle Width	105	Rear Leg Set	96	Centre Ligament	94
Dairy Strength	105	Body Depth	103	Rear Leg Rear View	105	Teat Place Front	95
		Chest Width	107	Udder Texture	94	Teat Place Rear	92
		Pin Width	99	Udder Depth	95	Teat Length	104

Sire:	Uecker Supersire Josuper		
Dam:	Wilara Oman Jo VG87		
Source:	Wilara Holsteins, Tinamba, VIC		
DOB:	05/06/2015	HB:	1898186



Daughter, Fala Park Giles 6012

Bundalong Liquidgold Warrior

GOLDWARRIOR

Liquidgold x O-Man

12FFL38

A22

BPI

320/78%



SEMEN Fertility
+0.76%

Production

ASI	kgP	P%	Milk	kgF	F%	Rel%	55 dtrs	18 herds	23% RIP
210	25	0.44%	73	24	0.30%	88	99	101	102

Workability

M Speed	Temp	Like	21 dtrs	9 herds	73% rel
99	101	102			

Health

Cell Count	Mastitis Res	Dtr Fertility	Gestation	Calving Ease	Survival	Heat Tol	Feed Saved
157 / 83	104 / 89	108 / 69	-1 / 94	105 / 87	106 / 63	95 / 38	-85 / 36

Type

Overall Type	105	Stature	105	Pin Set	97	Fore Attach	101
Mammary	100	Bone Quality	104	Loin Strength	98	Rear Udder Height	94
Feet & Legs	102	Angularity	104	Heel Depth	104	Rear Udder Width	96
Rump	99	Muzzle Width	100	Rear Leg Set	101	Centre Ligament	104
Dairy Strength	99	Body Depth	96	Rear Leg Rear View	104	Teat Place Front	106
		Chest Width	96	Udder Texture	105	Teat Place Rear	99
		Pin Width	101	Udder Depth	103	Teat Length	98

Sire:	Generations Liquid Gold		
Dam:	Bundalong Oman Waves VG88		
Source:	Bundalong Holsteins, Kongwak, VIC		
DOB:	01/07/2014	HB:	1814874



Daughter, Fala Park Goldwarrior 5966

Gain Mystical Guru

GURUBOB

12FFRBE

Mystic x Powerball

A22

BPI 272/67%

Sire:	SSI Shamrock Mystic		
Dam:	Adlejama Powerball Perfection 3185 G79		
Source:	Adlejama Holsteins, Biggarra, Vic		
DOB:	01/08/2018	HB:	2060901

Production							Workability		
ASI	kgP	P%	Milk	kgF	F%	Rel%	M Speed	Temp	Like
132	31	0.13%	900	3	-0.51%	79	102	103	105

Health								
Cell Count	Mastitis Res	Dtr Fertility	Gestation	Calving Ease	Survival	Heat Tol	Feed Saved	
143 / 70	105 / 69	110 / 51	-3 / 64	103 / 65	110 / 51	93 / 38	-4 / 33	

Type							
Overall Type	98	Stature	101	Pin Set	105	Fore Attach	97
Mammary	102	Bone Quality	98	Loin Strength	102	Rear Udder Height	101
Feet & Legs	93	Angularity	98	Heel Depth	100	Rear Udder Width	104
Rump	106	Muzzle Width	97	Rear Leg Set	109	Centre Ligament	102
Dairy Strength	96	Body Depth	97	Rear Leg Rear View	98	Teat Place Front	102
		Chest Width	98	Udder Texture	102	Teat Place Rear	99
		Pin Width	107	Udder Depth	100	Teat Length	100



Kaarmona Diamond

KARAT

12FFSAB

Complete x Slam Dunk

A12

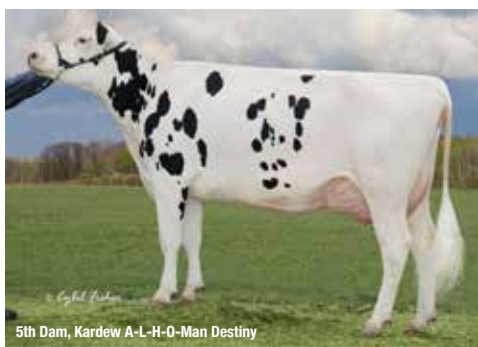
BPI 414/62%

Sire:	Larcrest B Complete		
Dam:	Kaarmona Slam Dunk Destiny 6		
Source:	Kaarmona Holsteins, Kaarimba, VIC		
DOB:	29/08/2019	HB:	2094798

Production							Workability		
ASI	kgP	P%	Milk	kgF	F%	Rel%	M Speed	Temp	Like
169	19	0.22%	256	37	0.37%	73	103	104	106

Health								
Cell Count	Mastitis Res	Dtr Fertility	Gestation	Calving Ease	Survival	Heat Tol	Feed Saved	
176 / 63	109 / 58	114 / 41	-4 / 62	100 / 57	112 / 43	96 / 38	-32 / 29	

Type							
Overall Type	106	Stature	105	Pin Set	95	Fore Attach	110
Mammary	110	Bone Quality	98	Loin Strength	99	Rear Udder Height	109
Feet & Legs	100	Angularity	95	Heel Depth	101	Rear Udder Width	101
Rump	97	Muzzle Width	104	Rear Leg Set	100	Centre Ligament	105
Dairy Strength	97	Body Depth	96	Rear Leg Rear View	105	Teat Place Front	106
		Chest Width	102	Udder Texture	100	Teat Place Rear	104
		Pin Width	100	Udder Depth	109	Teat Length	94



Kaarmona Dewey

KARDEW

12FFSAJ

Complete x Slam Dunk

A22

BPI 391/62%

Sire:	Larcrest B Complete		
Dam:	Kaarmona Slam Dunk Destiny 6		
Source:	Kaarmona Holsteins, Kaarimba, VIC		
DOB:	03/09/2019	HB:	2094798

Production							Workability		
ASI	kgP	P%	Milk	kgF	F%	Rel%	M Speed	Temp	Like
192	27	0.20%	618	37	0.16%	73	103	104	106

Health								
Cell Count	Mastitis Res	Dtr Fertility	Gestation	Calving Ease	Survival	Heat Tol	Feed Saved	
165 / 63	107 / 59	109 / 42	-5 / 62	102 / 57	112 / 44	93 / 38	-31 / 29	

Type							
Overall Type	106	Stature	104	Pin Set	97	Fore Attach	106
Mammary	110	Bone Quality	102	Loin Strength	99	Rear Udder Height	109
Feet & Legs	101	Angularity	98	Heel Depth	100	Rear Udder Width	103
Rump	98	Muzzle Width	102	Rear Leg Set	97	Centre Ligament	106
Dairy Strength	99	Body Depth	96	Rear Leg Rear View	107	Teat Place Front	107
		Chest Width	100	Udder Texture	103	Teat Place Rear	106
		Pin Width	103	Udder Depth	107	Teat Length	96



Rengaw Redmaw KB 9975

KINGTUT

12FFM21

Kingboy x Planet

A22

BPI 305/85%

✓ **SEMEN Fertility** +2.11%

Sire:	Morningview MCC Kingboy		
Dam:	Rengaw Sunplan Jazz VG85		
Source:	Rengaw Holsteins, Bridport, TAS		
DOB:	06/08/2015	HB:	1879558

Production							Workability		
ASI	kgP	P%	Milk	kgF	F%	Rel%	M Speed	Temp	Like
230	38	0.06%	1289	53	-0.02%	94	94	97	102

Health								
Cell Count	Mastitis Res	Dtr Fertility	Gestation	Calving Ease	Survival	Heat Tol	Feed Saved	
179 / 91	108 / 95	105 / 78	1 / 97	99 / 93	107 / 71	99 / 38	-145 / 43	

Type							
Overall Type	102	Stature	105	Pin Set	96	Fore Attach	96
Mammary	106	Bone Quality	105	Loin Strength	98	Rear Udder Height	103
Feet & Legs	97	Angularity	92	Heel Depth	104	Rear Udder Width	108
Rump	102	Muzzle Width	102	Rear Leg Set	111	Centre Ligament	108
Dairy Strength	98	Body Depth	97	Rear Leg Rear View	100	Teat Place Front	103
		Chest Width	99	Udder Texture	106	Teat Place Rear	101
		Pin Width	108	Udder Depth	100	Teat Length	100



Wilara Kobe

KOBE

Vador x Silver

12FFRBB

A12

BPI

313/67%

Sire:

Leothe Dark Vador

Dam:

Wilara Silver Kalidascope GP82

Source:

Wilara Holsteins, Tinamba, VIC

DOB:

11/08/2018

HB:

2050230

Production							Workability		
ASI	kgP	P%	Milk	kgF	F%	Rel%	M Speed	Temp	Like
175	21	0.31%	161	28	0.30%	79	100	100	103

Health							
Cell Count	Mastitis Res	Dtr Fertility	Gestation	Calving Ease	Survival	Heat Tol	Feed Saved
155 / 70	108 / 70	111 / 50	-5 / 65	105 / 68	110 / 51	98 / 38	-51 / 32

Type							
Overall Type	101	Stature	104	Pin Set	101	Fore Attach	101
Mammary	102	Bone Quality	97	Loin Strength	93	Rear Udder Height	102
Feet & Legs	101	Angularity	92	Heel Depth	98	Rear Udder Width	99
Rump	98	Muzzle Width	103	Rear Leg Set	99	Centre Ligament	104
Dairy Strength	96	Body Depth	94	Rear Leg Rear View	104	Teat Place Front	102
		Chest Width	101	Udder Texture	99	Teat Place Rear	99
		Pin Width	96	Udder Depth	105	Teat Length	98



Illawambra Perseus Lager

LAGER

Perseus x Salvino

12FFRAJ

A22

BPI

310/64%

Sire:

Westcoast Perseus

Dam:

Illawambra Salvino Larissa GP83

Source:

Illawambra Holsteins, Barrengarry, NSW

DOB:

28/12/2018

HB:

2061600

Production							Workability		
ASI	kgP	P%	Milk	kgF	F%	Rel%	M Speed	Temp	Like
146	24	0.19%	519	18	-0.07%	74	102	101	104

Health							
Cell Count	Mastitis Res	Dtr Fertility	Gestation	Calving Ease	Survival	Heat Tol	Feed Saved
152 / 65	103 / 63	113 / 45	-2 / 64	104 / 63	107 / 48	99 / 38	-39 / 32

Type							
Overall Type	98	Stature	102	Pin Set	96	Fore Attach	100
Mammary	104	Bone Quality	103	Loin Strength	95	Rear Udder Height	104
Feet & Legs	96	Angularity	93	Heel Depth	102	Rear Udder Width	99
Rump	100	Muzzle Width	100	Rear Leg Set	103	Centre Ligament	105
Dairy Strength	94	Body Depth	93	Rear Leg Rear View	96	Teat Place Front	104
		Chest Width	99	Udder Texture	101	Teat Place Rear	102
		Pin Width	99	Udder Depth	106	Teat Length	93



Redmaw Fedora Lastin

LASTIN

Fedora x Jett

12FFSAF

A12

BPI

402/63%

Sire:

Sandy-Valley Fedora

Dam:

Redmaw Jett Lautaky GP83

Source:

Redmaw Holsteins, Lockington, VIC

DOB:

10/07/2019

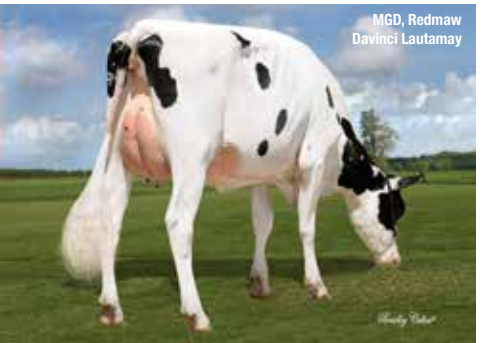
HB:

2088239

Production							Workability		
ASI	kgP	P%	Milk	kgF	F%	Rel%	M Speed	Temp	Like
221	30	0.30%	511	37	0.22%	74	103	102	106

Health							
Cell Count	Mastitis Res	Dtr Fertility	Gestation	Calving Ease	Survival	Heat Tol	Feed Saved
156 / 64	106 / 60	109 / 43	-5 / 63	102 / 65	111 / 46	96 / 38	37 / 30

Type							
Overall Type	107	Stature	104	Pin Set	95	Fore Attach	107
Mammary	107	Bone Quality	100	Loin Strength	96	Rear Udder Height	110
Feet & Legs	101	Angularity	98	Heel Depth	102	Rear Udder Width	102
Rump	100	Muzzle Width	103	Rear Leg Set	97	Centre Ligament	103
Dairy Strength	99	Body Depth	97	Rear Leg Rear View	102	Teat Place Front	100
		Chest Width	99	Udder Texture	101	Teat Place Rear	99
		Pin Width	104	Udder Depth	106	Teat Length	100



Redmaw Percy Laut M57

LAUTA

Percy x Powerball

12FFSAK

A22

BPI

357/63%

Sire:

SSI Exactly Percy

Dam:

Redmaw Powerball Lautamay P GP82

Source:

Redmaw Holsteins, Lockington, VIC

DOB:

03/02/2019

HB:

2062393

Production							Workability		
ASI	kgP	P%	Milk	kgF	F%	Rel%	M Speed	Temp	Like
196	28	0.31%	415	25	0.11%	74	103	102	106

Health							
Cell Count	Mastitis Res	Dtr Fertility	Gestation	Calving Ease	Survival	Heat Tol	Feed Saved
152 / 64	107 / 59	109 / 44	-5 / 64	101 / 65	111 / 46	96 / 38	-68 / 30

Type							
Overall Type	106	Stature	109	Pin Set	101	Fore Attach	102
Mammary	105	Bone Quality	101	Loin Strength	102	Rear Udder Height	107
Feet & Legs	96	Angularity	97	Heel Depth	99	Rear Udder Width	101
Rump	104	Muzzle Width	99	Rear Leg Set	105	Centre Ligament	104
Dairy Strength	96	Body Depth	93	Rear Leg Rear View	99	Teat Place Front	101
		Chest Width	95	Udder Texture	105	Teat Place Rear	101
		Pin Width	103	Udder Depth	108	Teat Length	104



Redmaw Jett Lautett

LAUTETT

12FFN96

Jett x Davinci

A12

BPI 246/66%

Sire: SSI Montross Jett
 Dam: Redmaw Davinci Lautamay GP84
 Source: Redmaw Holsteins, Lockington, VIC
 DOB: 23/12/2016 HB: 1973621

Production							Workability		
ASI	kgP	P%	Milk	kgF	F%	Rel%	M Speed	Temp	Like
149	34	0.03%	1212	18	-0.49%	77	101	102	108

Health								
Cell Count	Mastitis Res	Dtr Fertility	Gestation	Calving Ease	Survival	Heat Tol	Feed Saved	
140 / 69	101 / 66	104 / 50	-9 / 85	104 / 78	112 / 50	96 / 38	-86 / 32	

Type								dtrs herds 59% rel	
Overall Type	102	Stature	106	Pin Set	106	Fore Attach	101		
Mammary	104	Bone Quality	95	Loin Strength	100	Rear Udder Height	108		
Feet & Legs	101	Angularity	97	Heel Depth	98	Rear Udder Width	102		
Rump	103	Muzzle Width	105	Rear Leg Set	98	Centre Ligament	100		
Dairy Strength	100	Body Depth	98	Rear Leg Rear View	100	Teat Place Front	100		
		Chest Width	103	Udder Texture	94	Teat Place Rear	98		
		Pin Width	101	Udder Depth	104	Teat Length	99		



Redmaw Powerball Logan P

LOGANX P

12FFN94

Powerball x Davinci

A12

BPI 311/69%

✓ SEMEN Fertility +0.28%

Sire: View-Home Powerball P
 Dam: Redmaw Davinci Lautamay GP84
 Source: Redmaw Holsteins, Lockington, VIC
 DOB: 05/11/2016 HB: 1967740

Production							Workability		
ASI	kgP	P%	Milk	kgF	F%	Rel%	M Speed	Temp	Like
183	33	0.26%	701	15	-0.21%	79	101	100	105

Health								
Cell Count	Mastitis Res	Dtr Fertility	Gestation	Calving Ease	Survival	Heat Tol	Feed Saved	
137 / 71	103 / 69	109 / 55	-2 / 91	104 / 86	109 / 55	93 / 38	53 / 33	

Type								dtrs herds 63% rel	
Overall Type	99	Stature	104	Pin Set	101	Fore Attach	102		
Mammary	105	Bone Quality	103	Loin Strength	97	Rear Udder Height	109		
Feet & Legs	93	Angularity	96	Heel Depth	100	Rear Udder Width	99		
Rump	101	Muzzle Width	97	Rear Leg Set	107	Centre Ligament	103		
Dairy Strength	92	Body Depth	92	Rear Leg Rear View	93	Teat Place Front	100		
		Chest Width	90	Udder Texture	103	Teat Place Rear	102		
		Pin Width	104	Udder Depth	106	Teat Length	100		



Redmaw Fedora Lostem P

LOSTEM P

12FFSBA

Fedora x Powerball

A22

BPI 348/63%

Sire: Sandy-Valley Fedora
 Dam: Redmaw Powerball Lautamay P GP82
 Source: Redmaw Holsteins, Lockington, VIC
 DOB: 17/06/2019 HB: 2088234

Production							Workability		
ASI	kgP	P%	Milk	kgF	F%	Rel%	M Speed	Temp	Like
200	38	0.23%	967	18	-0.34%	73	103	100	106

Health								
Cell Count	Mastitis Res	Dtr Fertility	Gestation	Calving Ease	Survival	Heat Tol	Feed Saved	
143 / 64	104 / 59	110 / 44	-6 / 63	102 / 65	110 / 46	95 / 38	-68 / 30	

Type								dtrs herds 54% rel	
Overall Type	104	Stature	105	Pin Set	98	Fore Attach	104		
Mammary	107	Bone Quality	101	Loin Strength	99	Rear Udder Height	109		
Feet & Legs	96	Angularity	98	Heel Depth	102	Rear Udder Width	102		
Rump	101	Muzzle Width	103	Rear Leg Set	101	Centre Ligament	105		
Dairy Strength	98	Body Depth	97	Rear Leg Rear View	99	Teat Place Front	102		
		Chest Width	97	Udder Texture	106	Teat Place Rear	103		
		Pin Width	106	Udder Depth	105	Teat Length	103		



Calister Maebull

MAEBULL

12FFJ49

Palermo x Shottle

423651

sexed available

A22

BPI 303/89%

✓ SEMEN Fertility +0.68%

Sire: Glenn-Ann Palermo
 Dam: Morningview Shtl Lucy EX2E
 Source: Calister Holsteins, Calivil, VIC
 DOB: 27/07/2012 HB: 1712643

Production							Workability		
ASI	kgP	P%	Milk	kgF	F%	Rel%	M Speed	Temp	Like
117	18	0.14%	380	18	0.03%	98	101	101	104

Health								
Cell Count	Mastitis Res	Dtr Fertility	Gestation	Calving Ease	Survival	Heat Tol	Feed Saved	
191 / 97	109 / 98	110 / 93	1 / 99	102 / 99	109 / 89	102 / 38	15 / 43	

Type								70 dtrs 28 herds 86% rel	
Overall Type	103	Stature	99	Pin Set	99	Fore Attach	106		
Mammary	100	Bone Quality	90	Loin Strength	97	Rear Udder Height	101		
Feet & Legs	100	Angularity	96	Heel Depth	98	Rear Udder Width	100		
Rump	100	Muzzle Width	98	Rear Leg Set	101	Centre Ligament	96		
Dairy Strength	99	Body Depth	99	Rear Leg Rear View	100	Teat Place Front	96		
		Chest Width	103	Udder Texture	99	Teat Place Rear	94		
		Pin Width	101	Udder Depth	104	Teat Length	102		



Purnim MVP Masnah

MASNAH

MVP x Buddha

12FFM39

A22

423516

sexedavailable

BPI

366/78%

✓SEMEN Fertility

+0.40%

Sire:

Seagull-Bay MVP

Dam:

Purnim Buddha Shasnah GP83

Source:

Purnim Holsteins, Purnim, VIC

DOB:

14/09/2015

HB:

1912001

Production

99 dtrs 17 herds 84% RIP

ASI	kgP	P%	Milk	kgF	F%	Rel%
330	34	0.68%	-80	50	0.77%	89

Workability

16 dtrs 4 herds 74% rel

M Speed	Temp	Like
104	106	108

Health

Cell Count	Mastitis Res	Dtr Fertility	Gestation	Calving Ease	Survival	Heat Tol	Feed Saved
109 / 83	97 / 93	99 / 61	-1 / 98	102 / 97	107 / 65	93 / 38	-143 / 38

Type

8 dtrs 3 herds 73% rel

Overall Type	103	Stature	103	Pin Set	92	Fore Attach	100
Mammary	107	Bone Quality	98	Loin Strength	97	Rear Udder Height	101
Feet & Legs	107	Angularity	102	Heel Depth	106	Rear Udder Width	109
Rump	92	Muzzle Width	102	Rear Leg Set	98	Centre Ligament	105
Dairy Strength	105	Body Depth	103	Rear Leg Rear View	104	Teat Place Front	107
		Chest Width	105	Udder Texture	101	Teat Place Rear	109
		Pin Width	99	Udder Depth	101	Teat Length	89

Daughter, Purnim Masnah Lisher

Carenda Palermo 270

MENCHOV

Palermo x O-Man

12FFJ45

A22

423516

sexedavailable

BPI

177/87%

✓SEMEN Fertility

+0.69%

Sire:

Glenn-Ann Palermo

Dam:

Carenda Oman Floosie EX90

Source:

Carenda Holsteins, Boyanup, WA

DOB:

03/10/2012

HB:

1719755

Production

146 dtrs 38 herds 9% RIP

ASI	kgP	P%	Milk	kgF	F%	Rel%
70	20	-0.02%	783	4	-0.42%	96

Workability

69 dtrs 22 herds 89% rel

M Speed	Temp	Like
102	103	106

Health

Cell Count	Mastitis Res	Dtr Fertility	Gestation	Calving Ease	Survival	Heat Tol	Feed Saved
133 / 93	98 / 95	107 / 92	0 / 96	105 / 92	106 / 88	99 / 38	-76 / 43

Type

58 dtrs 26 herds 84% rel

Overall Type	101	Stature	103	Pin Set	114	Fore Attach	104
Mammary	99	Bone Quality	93	Loin Strength	105	Rear Udder Height	97
Feet & Legs	93	Angularity	98	Heel Depth	100	Rear Udder Width	100
Rump	110	Muzzle Width	100	Rear Leg Set	107	Centre Ligament	96
Dairy Strength	100	Body Depth	100	Rear Leg Rear View	92	Teat Place Front	97
		Chest Width	102	Udder Texture	98	Teat Place Rear	99
		Pin Width	106	Udder Depth	99	Teat Length	104

Daughter, Menchov 528, S Garnham

Hindlee Picola Goldchipdream 1418

MICROCHIP

Picola x Goldchip

12FFL15

A22

324165

sexedavailable

BPI

198/90%

✓SEMEN Fertility

+0.51%

Sire:

Adlejama Delsanto Picola

Dam:

Hindlee Goldchip Ordream VG87

Source:

Hindlee Holsteins, Smithton, TAS

DOB:

05/08/2014

HB:

1807180

Production

470 dtrs 67 herds 50% RIP

ASI	kgP	P%	Milk	kgF	F%	Rel%
100	14	0.02%	474	29	0.13%	98

Workability

119 dtrs 21 herds 93% rel

M Speed	Temp	Like
104	103	104

Health

Cell Count	Mastitis Res	Dtr Fertility	Gestation	Calving Ease	Survival	Heat Tol	Feed Saved
165 / 97	106 / 98	96 / 92	-4 / 99	103 / 98	105 / 76	96 / 38	178 / 45

Type

111 dtrs 29 herds 90% rel

Overall Type	97	Stature	94	Pin Set	105	Fore Attach	95
Mammary	99	Bone Quality	104	Loin Strength	101	Rear Udder Height	102
Feet & Legs	92	Angularity	96	Heel Depth	96	Rear Udder Width	97
Rump	106	Muzzle Width	95	Rear Leg Set	107	Centre Ligament	103
Dairy Strength	92	Body Depth	92	Rear Leg Rear View	97	Teat Place Front	102
		Chest Width	94	Udder Texture	99	Teat Place Rear	102
		Pin Width	102	Udder Depth	99	Teat Length	102

Daughter, Fala Park Microchip 5934

Bundalong Magictouch Mister

MRMAGIC

Magictouch x Muscadet

12FFRAA

A22

324165

sexedavailable

BPI

328/64%

Sire:

SSI Modesty Magictouch

Dam:

Bundalong Muscadet Missy 3579 VG85

Source:

Bundalong Holsteins, Kongwak, VIC

DOB:

03/06/2018

HB:

2051945

Production

dtrs herds % RIP

ASI	kgP	P%	Milk	kgF	F%	Rel%
165	20	0.40%	-53	14	0.23%	74

Workability

dtrs herds 58% rel

M Speed	Temp	Like
104	103	105

Health

Cell Count	Mastitis Res	Dtr Fertility	Gestation	Calving Ease	Survival	Heat Tol	Feed Saved
143 / 66	103 / 61	110 / 47	-2 / 64	102 / 60	108 / 48	98 / 38	17 / 31

Type

dtrs herds 57% rel

Overall Type	100	Stature	102	Pin Set	95	Fore Attach	104
Mammary	106	Bone Quality	99	Loin Strength	96	Rear Udder Height	107
Feet & Legs	100	Angularity	93	Heel Depth	100	Rear Udder Width	104
Rump	99	Muzzle Width	99	Rear Leg Set	100	Centre Ligament	101
Dairy Strength	97	Body Depth	94	Rear Leg Rear View	101	Teat Place Front	102
		Chest Width	100	Udder Texture	96	Teat Place Rear	98
		Pin Width	99	Udder Depth	108	Teat Length	99

MGD, Seagull-Bay Ssire Debra

Carenda Pemberton

PEMBERTON

Perseus x Jacey

sexed available

12FFRAC A22

BPI 388/67%

Sire:	Westcoast Perseus		
Dam:	Carenda Jacey Funky VG86		
Source:	Carenda Holsteins, Boyanup, WA		
DOB:	14/03/2018	HB:	2030847

Production							Workability		
ASI	kgP	P%	Milk	kgF	F%	Rel%	M Speed	Temp	Like
205	27	0.38%	266	24	0.18%	78	102	103	105

Health							
Cell Count	Mastitis Res	Dtr Fertility	Gestation	Calving Ease	Survival	Heat Tol	Feed Saved
175 / 69	107 / 68	109 / 50	0 / 79	103 / 81	109 / 52	93 / 38	-34 / 33

Type							
Overall Type	104	Stature	105	Pin Set	100	Fore Attach	103
Mammary	106	Bone Quality	105	Loin Strength	98	Rear Udder Height	106
Feet & Legs	102	Angularity	97	Heel Depth	103	Rear Udder Width	102
Rump	102	Muzzle Width	99	Rear Leg Set	98	Centre Ligament	105
Dairy Strength	96	Body Depth	94	Rear Leg Rear View	100	Teat Place Front	102
		Chest Width	96	Udder Texture	102	Teat Place Rear	104
		Pin Width	105	Udder Depth	107	Teat Length	95



Carenda Pilbara

PILBARA

Perseus x Powerball

sexed available

12FFRAE A22

BPI 394/66%

Sire:	Westcoast Perseus		
Dam:	Carenda Powerball Vergara P GP82		
Source:	Carenda Holsteins, Boyanup, WA		
DOB:	08/09/2018	HB:	2050612

Production							Workability		
ASI	kgP	P%	Milk	kgF	F%	Rel%	M Speed	Temp	Like
219	34	0.34%	591	24	-0.02%	77	103	103	106

Health							
Cell Count	Mastitis Res	Dtr Fertility	Gestation	Calving Ease	Survival	Heat Tol	Feed Saved
159 / 68	107 / 67	110 / 47	-2 / 70	106 / 68	110 / 50	94 / 38	9 / 33

Type							
Overall Type	102	Stature	103	Pin Set	95	Fore Attach	100
Mammary	107	Bone Quality	110	Loin Strength	101	Rear Udder Height	108
Feet & Legs	94	Angularity	98	Heel Depth	102	Rear Udder Width	104
Rump	101	Muzzle Width	94	Rear Leg Set	106	Centre Ligament	106
Dairy Strength	95	Body Depth	95	Rear Leg Rear View	98	Teat Place Front	103
		Chest Width	93	Udder Texture	104	Teat Place Rear	107
		Pin Width	105	Udder Depth	105	Teat Length	91



Carenda Pinjarra

PINJARRA

Perseus x Megasire

sexed available

12FFRAD A22

BPI 327/66%

✓ **SEMEN Fertility**
+0.68%

Sire:	Westcoast Perseus		
Dam:	Carenda 6848 Mega F		
Source:	Carenda Holsteins, Boyanup, WA		
DOB:	23/04/2018	HB:	2033720

Production							Workability		
ASI	kgP	P%	Milk	kgF	F%	Rel%	M Speed	Temp	Like
160	14	0.30%	-65	32	0.50%	77	103	102	105

Health							
Cell Count	Mastitis Res	Dtr Fertility	Gestation	Calving Ease	Survival	Heat Tol	Feed Saved
163 / 68	107 / 67	109 / 48	-3 / 72	104 / 69	108 / 50	99 / 38	-2 / 33

Type							
Overall Type	101	Stature	104	Pin Set	98	Fore Attach	102
Mammary	105	Bone Quality	105	Loin Strength	95	Rear Udder Height	104
Feet & Legs	96	Angularity	94	Heel Depth	100	Rear Udder Width	101
Rump	101	Muzzle Width	97	Rear Leg Set	106	Centre Ligament	106
Dairy Strength	96	Body Depth	95	Rear Leg Rear View	98	Teat Place Front	103
		Chest Width	101	Udder Texture	102	Teat Place Rear	107
		Pin Width	103	Udder Depth	106	Teat Length	92



Winaview Powerball Powerwave

POWERWAVE

Powerball x Wyman

sexed available

12FFN88 A22

BPI 276/69%

✓ **SEMEN Fertility**
+2.37%

Sire:	View-Home Powerball P		
Dam:	Winaview Wyman Waves VG88		
Source:	Winaview Holsteins, Warragul, VIC		
DOB:	14/08/2016	HB:	1954610

Production							Workability		
ASI	kgP	P%	Milk	kgF	F%	Rel%	M Speed	Temp	Like
211	36	0.35%	643	16	-0.17%	79	101	99	103

Health							
Cell Count	Mastitis Res	Dtr Fertility	Gestation	Calving Ease	Survival	Heat Tol	Feed Saved
124 / 70	101 / 70	107 / 57	-1 / 90	103 / 84	106 / 58	90 / 38	-14 / 34

Type							
Overall Type	100	Stature	104	Pin Set	98	Fore Attach	98
Mammary	99	Bone Quality	102	Loin Strength	99	Rear Udder Height	103
Feet & Legs	94	Angularity	99	Heel Depth	103	Rear Udder Width	94
Rump	100	Muzzle Width	97	Rear Leg Set	107	Centre Ligament	101
Dairy Strength	98	Body Depth	99	Rear Leg Rear View	97	Teat Place Front	100
		Chest Width	98	Udder Texture	103	Teat Place Rear	102
		Pin Width	101	Udder Depth	101	Teat Length	100



Wilara Samaritan P

SAMARIA P

12FFSAH A12

Jeronimo x Booth

BPI **372/60%**

Sire:	ABS Jeronimo		
Dam:	Wilara Booth Steph		
Source:	Wilara Holsteins, Tinamba, VIC		
DOB:	04/09/2019	HB:	2093080

Production							Workability		
ASI	kgP	P%	Milk	kgF	F%	Rel%	M Speed	Temp	Like
196	34	0.29%	685	18	-0.17%	72	101	102	104

Health								
Cell Count	Mastitis Res	Dtr Fertility	Gestation	Calving Ease	Survival	Heat Tol	Feed Saved	
163 / 62	106 / 56	111 / 39	-2 / 65	101 / 65	110 / 42	93 / 38	71 / 28	

Type								dtrs herds 49% rel	
Overall Type	101	Stature	100	Pin Set	103	Fore Attach	103		
Mammary	102	Bone Quality	105	Loin Strength	105	Rear Udder Height	106		
Feet & Legs	98	Angularity	99	Heel Depth	100	Rear Udder Width	97		
Rump	105	Muzzle Width	94	Rear Leg Set	102	Centre Ligament	101		
Dairy Strength	95	Body Depth	94	Rear Leg Rear View	99	Teat Place Front	99		
		Chest Width	95	Udder Texture	99	Teat Place Rear	95		
		Pin Width	99	Udder Depth	103	Teat Length	99		



Wilara Shila

SHILA

12FFSAD A12

Wookie x Buddha

BPI **390/64%**

Sire:	Wilara Rookie Jo		
Dam:	Wilara Buddha Steph VG87		
Source:	Wilara Holsteins, Tinamba, VIC		
DOB:	11/07/2019	HB:	2086576

Production							Workability		
ASI	kgP	P%	Milk	kgF	F%	Rel%	M Speed	Temp	Like
270	24	0.57%	-216	45	0.78%	75	101	103	104

Health								
Cell Count	Mastitis Res	Dtr Fertility	Gestation	Calving Ease	Survival	Heat Tol	Feed Saved	
134 / 66	105 / 61	107 / 47	-3 / 65	101 / 65	105 / 49	95 / 38	76 / 31	

Type								dtrs herds 56% rel	
Overall Type	100	Stature	98	Pin Set	101	Fore Attach	103		
Mammary	100	Bone Quality	100	Loin Strength	97	Rear Udder Height	100		
Feet & Legs	101	Angularity	97	Heel Depth	99	Rear Udder Width	99		
Rump	98	Muzzle Width	99	Rear Leg Set	100	Centre Ligament	99		
Dairy Strength	97	Body Depth	97	Rear Leg Rear View	101	Teat Place Front	102		
		Chest Width	101	Udder Texture	98	Teat Place Rear	95		
		Pin Width	95	Udder Depth	101	Teat Length	103		



Glomar Silver 1717

SILVERLINE

22FFM14 A12

Silver x Fever

BPI **351/71%**

✓ **SEMEN Fertility**
+1.40%

Sire:	Seagull-Bay Silver		
Dam:	Glomar Fever Lady 4634 VG89		
Source:	Glomar Holsteins, Bundalaguah, VIC		
DOB:	10/07/2015	HB:	1880201

Production							Workability		
ASI	kgP	P%	Milk	kgF	F%	Rel%	M Speed	Temp	Like
259	35	0.24%	811	56	0.31%	79	105	102	106

Health								
Cell Count	Mastitis Res	Dtr Fertility	Gestation	Calving Ease	Survival	Heat Tol	Feed Saved	
128 / 74	100 / 85	98 / 60	1 / 99	101 / 98	109 / 62	89 / 38	-31 / 36	

Type								4 dtrs 4 herds 69% rel	
Overall Type	107	Stature	107	Pin Set	104	Fore Attach	103		
Mammary	110	Bone Quality	104	Loin Strength	101	Rear Udder Height	108		
Feet & Legs	111	Angularity	97	Heel Depth	106	Rear Udder Width	107		
Rump	101	Muzzle Width	101	Rear Leg Set	94	Centre Ligament	107		
Dairy Strength	96	Body Depth	94	Rear Leg Rear View	106	Teat Place Front	107		
		Chest Width	97	Udder Texture	107	Teat Place Rear	106		
		Pin Width	95	Udder Depth	107	Teat Length	95		



Country Road Silverline 4910

SILVERSTAR

12FFRAG A12

Silverline x Wyman

BPI **324/67%**

Sire:	Glomar Silver 1717		
Dam:	Country Road Wyman Anastasia VG86		
Source:	Country Road Holsteins, Edi Upper, VIC		
DOB:	08/03/2018	HB:	2028577

Production							Workability		
ASI	kgP	P%	Milk	kgF	F%	Rel%	M Speed	Temp	Like
195	21	0.27%	259	41	0.43%	78	103	102	104

Health								
Cell Count	Mastitis Res	Dtr Fertility	Gestation	Calving Ease	Survival	Heat Tol	Feed Saved	
139 / 69	104 / 68	105 / 49	0 / 83	103 / 79	109 / 52	97 / 38	-17 / 32	

Type								dtrs herds 60% rel	
Overall Type	104	Stature	105	Pin Set	105	Fore Attach	103		
Mammary	106	Bone Quality	99	Loin Strength	103	Rear Udder Height	106		
Feet & Legs	104	Angularity	95	Heel Depth	102	Rear Udder Width	103		
Rump	101	Muzzle Width	100	Rear Leg Set	102	Centre Ligament	105		
Dairy Strength	97	Body Depth	95	Rear Leg Rear View	103	Teat Place Front	102		
		Chest Width	99	Udder Texture	104	Teat Place Rear	101		
		Pin Width	90	Udder Depth	105	Teat Length	99		



Eclipse Akina Uno F173

SINGULAR

12FFL48

A22

Numero Uno x Shamrock

BPI

323/75%

SEMEN Fertility
+0.73%

Sire: Amighetti Numero Uno
 Dam: KHW Shamrock Akina VG85
 Source: P Fullerton, Nirranda South, VIC
 DOB: 08/04/2014 HB: 1786162

Production

ASI	kgP	P%	Milk	kgF	F%	Rel%	62 dtrs 2 herds 29% RIP		
114	7	0.13%	11	37	0.52%	86			

Workability

M Speed	Temp	Like	9 dtrs 1 herds 75% rel		
102	102	105			

Health

Cell Count	Mastitis Res	Dtr Fertility	Gestation	Calving Ease	Survival	Heat Tol	Feed Saved
174 / 73	105 / 90	112 / 67	0 / 85	104 / 79	110 / 64	101 / 38	102 / 34

Type

Overall Type	102	Stature	98	Pin Set	101	Fore Attach	104
Mammary	103	Bone Quality	103	Loin Strength	94	Rear Udder Height	105
Feet & Legs	99	Angularity	94	Heel Depth	104	Rear Udder Width	95
Rump	101	Muzzle Width	92	Rear Leg Set	103	Centre Ligament	107
Dairy Strength	94	Body Depth	94	Rear Leg Rear View	96	Teat Place Front	99
		Chest Width	95	Udder Texture	101	Teat Place Rear	103
		Pin Width	99	Udder Depth	105	Teat Length	95

1 dtrs 1 herds 68% rel

MGD, KHW Shamrock Aiko



Carendra Sondalo

SONDALO

12FFSAC

sexed available

A12

Jeronimo x Main Event

BPI

394/64%

SEMEN Fertility
+0.73%

Sire: ABS Jeronimo
 Dam: Carenda Mainevent Vanda VG88
 Source: Carenda Holsteins, Boyanup, WA
 DOB: 10/03/2019 HB: 2069532

Production

ASI	kgP	P%	Milk	kgF	F%	Rel%	dtrs herds % RIP		
190	24	0.19%	511	43	0.31%	75			

Workability

M Speed	Temp	Like	dtrs herds 59% rel		
103	100	104			

Health

Cell Count	Mastitis Res	Dtr Fertility	Gestation	Calving Ease	Survival	Heat Tol	Feed Saved
167 / 65	106 / 61	113 / 46	-5 / 65	103 / 67	110 / 47	97 / 38	28 / 30

Type

Overall Type	104	Stature	102	Pin Set	98	Fore Attach	104
Mammary	107	Bone Quality	105	Loin Strength	100	Rear Udder Height	106
Feet & Legs	100	Angularity	96	Heel Depth	101	Rear Udder Width	101
Rump	101	Muzzle Width	98	Rear Leg Set	101	Centre Ligament	105
Dairy Strength	96	Body Depth	93	Rear Leg Rear View	100	Teat Place Front	104
		Chest Width	99	Udder Texture	102	Teat Place Rear	103
		Pin Width	98	Udder Depth	106	Teat Length	93

dtrs herds 55% rel

Dam, Carenda Mainevent Vanda



Warramont Superhero Dave

SUPERDAVE

12FFPCB

sexed available

A22

Superhero x Doorman

342516

BPI

369/68%

SEMEN Fertility
+1.60%

Sire: Endco Superhero
 Dam: Warramont Doorman Daybreak 10th VG87
 Source: Warramont Holsteins, Mt Gambier, SA
 DOB: 17/10/2017 HB: 2018418

Production

ASI	kgP	P%	Milk	kgF	F%	Rel%	dtrs herds % RIP		
232	22	0.49%	-151	37	0.63%	79			

Workability

M Speed	Temp	Like	dtrs herds 66% rel		
101	104	105			

Health

Cell Count	Mastitis Res	Dtr Fertility	Gestation	Calving Ease	Survival	Heat Tol	Feed Saved
162 / 70	105 / 70	105 / 55	-3 / 98	101 / 96	109 / 55	93 / 38	-44 / 33

Type

Overall Type	103	Stature	105	Pin Set	102	Fore Attach	103
Mammary	104	Bone Quality	101	Loin Strength	100	Rear Udder Height	104
Feet & Legs	97	Angularity	99	Heel Depth	99	Rear Udder Width	98
Rump	103	Muzzle Width	100	Rear Leg Set	100	Centre Ligament	103
Dairy Strength	100	Body Depth	99	Rear Leg Rear View	98	Teat Place Front	107
		Chest Width	98	Udder Texture	102	Teat Place Rear	101
		Pin Width	103	Udder Depth	103	Teat Length	98

dtrs herds 63% rel

SUPERDAVE



Glomar Supersire 1667

SUPERDUDE

22FFM15

A12

Supersire x Goldwyn

BPI

335/68%

SEMEN Fertility
+1.49%

Sire: Seagull-Bay Supersire
 Dam: Glomar Goldwyn Lucky 4319 VG87
 Source: Glomar Holsteins, Bundalaguah, VIC
 DOB: 04/01/2015 HB: 1867209

Production

ASI	kgP	P%	Milk	kgF	F%	Rel%	20 dtrs 5 herds 85% RIP		
199	32	0.11%	975	42	0.01%	75			

Workability

M Speed	Temp	Like	3 dtrs 2 herds 72% rel		
102	102	104			

Health

Cell Count	Mastitis Res	Dtr Fertility	Gestation	Calving Ease	Survival	Heat Tol	Feed Saved
170 / 65	104 / 81	107 / 64	-2 / 91	102 / 88	114 / 64	102 / 38	-52 / 37

Type

Overall Type	98	Stature	107	Pin Set	108	Fore Attach	97
Mammary	97	Bone Quality	103	Loin Strength	99	Rear Udder Height	101
Feet & Legs	98	Angularity	94	Heel Depth	100	Rear Udder Width	94
Rump	103	Muzzle Width	100	Rear Leg Set	101	Centre Ligament	97
Dairy Strength	95	Body Depth	95	Rear Leg Rear View	98	Teat Place Front	101
		Chest Width	99	Udder Texture	95	Teat Place Rear	99
		Pin Width	98	Udder Depth	109	Teat Length	97

8 dtrs 3 herds 72% rel

Daughter, Glomar Superdude 6147



Hindlee Sweetspot

SWEETSPOT

12FFSAN A22

Hotspot x Superhero

BPI **359/64%**

Sire:	Wil Hotspot P		
Dam:	Hindlee Superhero Gayle 17077 GP80		
Source:	Hindlee Holsteins, Smithton, TAS		
DOB:	10/08/2019	HB:	2097925

Production							Workability		
ASI	kgP	P%	Milk	kgF	F%	Rel%	M Speed	Temp	Like
182	28	0.22%	629	27	0.00%	75	104	104	105

Health							
Cell Count	Mastitis Res	Dtr Fertility	Gestation	Calving Ease	Survival	Heat Tol	Feed Saved
146 / 65	101 / 61	109 / 43	-1 / 64	102 / 64	111 / 46	90 / 38	-30 / 31

Type							
Overall Type	105	Stature	105	Pin Set	105	Fore Attach	103
Mammary	104	Bone Quality	103	Loin Strength	104	Rear Udder Height	107
Feet & Legs	98	Angularity	101	Heel Depth	101	Rear Udder Width	97
Rump	104	Muzzle Width	98	Rear Leg Set	101	Centre Ligament	105
Dairy Strength	102	Body Depth	100	Rear Leg Rear View	99	Teat Place Front	99
		Chest Width	98	Udder Texture	104	Teat Place Rear	101
		Pin Width	99	Udder Depth	105	Teat Length	100



Wilara Tex

TEXMEX

12FFRBC A12

Vador x Buddha

BPI **346/67%**

Sire:	Leothe Dark Vador		
Dam:	Wilara Buddha Trace EX90		
Source:	Wilara Holsteins, Tinamba, VIC		
DOB:	26/05/2018	HB:	2050240

Production							Workability		
ASI	kgP	P%	Milk	kgF	F%	Rel%	M Speed	Temp	Like
230	19	0.37%	-11	53	0.77%	79	101	100	102

Health							
Cell Count	Mastitis Res	Dtr Fertility	Gestation	Calving Ease	Survival	Heat Tol	Feed Saved
141 / 70	105 / 69	108 / 50	0 / 72	103 / 68	106 / 51	94 / 38	48 / 32

Type							
Overall Type	97	Stature	97	Pin Set	107	Fore Attach	98
Mammary	101	Bone Quality	99	Loin Strength	104	Rear Udder Height	101
Feet & Legs	99	Angularity	94	Heel Depth	99	Rear Udder Width	98
Rump	105	Muzzle Width	99	Rear Leg Set	96	Centre Ligament	102
Dairy Strength	95	Body Depth	97	Rear Leg Rear View	96	Teat Place Front	103
		Chest Width	97	Udder Texture	99	Teat Place Rear	102
		Pin Width	99	Udder Depth	100	Teat Length	97



Carenda Tirano

TIRANO P

12FFSAG A12

Jeronimo x Main Event

BPI **373/62%**

Sire:	ABS Jeronimo		
Dam:	Carenda Mainevent Vanda VG88		
Source:	Carenda Holsteins, Boyanup, WA		
DOB:	08/03/2019	HB:	2069572

Production							Workability		
ASI	kgP	P%	Milk	kgF	F%	Rel%	M Speed	Temp	Like
179	20	0.24%	290	37	0.36%	73	103	101	104

Health							
Cell Count	Mastitis Res	Dtr Fertility	Gestation	Calving Ease	Survival	Heat Tol	Feed Saved
162 / 64	105 / 59	110 / 44	-6 / 65	102 / 65	110 / 46	99 / 38	30 / 30

Type							
Overall Type	105	Stature	102	Pin Set	100	Fore Attach	104
Mammary	109	Bone Quality	108	Loin Strength	100	Rear Udder Height	108
Feet & Legs	103	Angularity	99	Heel Depth	102	Rear Udder Width	105
Rump	103	Muzzle Width	99	Rear Leg Set	101	Centre Ligament	106
Dairy Strength	98	Body Depth	98	Rear Leg Rear View	102	Teat Place Front	107
		Chest Width	99	Udder Texture	102	Teat Place Rear	104
		Pin Width	99	Udder Depth	102	Teat Length	95



Hindlee Wifi

WIFI

12FFSAM A12

Hotspot x Alltime

BPI **372/64%**

Sire:	Wil Hotspot P		
Dam:	Hindlee Alltime P Antzy 17177 GP83		
Source:	Hindlee Holsteins, Smithton, TAS		
DOB:	07/08/2019	HB:	2097923

Production							Workability		
ASI	kgP	P%	Milk	kgF	F%	Rel%	M Speed	Temp	Like
218	28	0.36%	326	32	0.26%	75	101	104	105

Health							
Cell Count	Mastitis Res	Dtr Fertility	Gestation	Calving Ease	Survival	Heat Tol	Feed Saved
157 / 66	105 / 62	106 / 45	-1 / 65	103 / 64	110 / 47	89 / 38	-10 / 31

Type							
Overall Type	106	Stature	104	Pin Set	101	Fore Attach	104
Mammary	107	Bone Quality	104	Loin Strength	101	Rear Udder Height	108
Feet & Legs	100	Angularity	100	Heel Depth	103	Rear Udder Width	104
Rump	101	Muzzle Width	98	Rear Leg Set	98	Centre Ligament	105
Dairy Strength	99	Body Depth	101	Rear Leg Rear View	101	Teat Place Front	100
		Chest Width	99	Udder Texture	104	Teat Place Rear	103
		Pin Width	100	Udder Depth	103	Teat Length	102



Prices are exclusive of GST and are effective from the 17th August 2020 and are subject to change without notice. Bulls identified with {6} are subject to limited registration with Jersey Australia.

Prices are exclusive of GST and are effective from the 17th August 2020 and are subject to change without notice. Bulls identified with {6} are subject to limited registration with Jersey Australia.

Genetics Australia *Breeding better herds*

Brookbora Valentino Askn
ASKN 12JJK13
 Valentino x Tbone
561432
sexed available
A22

BPI **176/71%**
SEMEN Fertility
+2.92%

Sire: All Lynns Louie Valentino
 Dam: Brookbora Standard Lady 225 EX90
 Source: Brookbora Jerseys, Tennyson, VIC
 DOB: 05/09/2013 HB: 666936

Production							Workability		
ASI	kgP	P%	Milk	kgF	F%	Rel%	M Speed	Temp	Like
107	15	0.22%	140	10	0.05%	79	101	103	107

Health							Type		
Cell Count	Mastitis Res	Dtr Fertility	Gestation	Survival	Heat Tol	Feed Saved	Overall Type	Mammary	
118 / 70	104 / 81	96 / 66	-1 / 97	115 / 65	94 / 38	-93 / 32	113	115	

Type							Workability		
Stature	Bone Quality	Angularity	Muzzle Width	Body Depth	Chest Width	Pin Width	M Speed	Temp	Like
107	106	108	105	102	101	107	101	103	107

Daughter, Brookbora Standard Lady 306



Broadlin Aussiegold P
AUSSIEGOLD P 12JJH05
 Elton x Vanahlem
243165
A22

BPI **142/92%**
SEMEN Fertility
+2.57%

Sire: Cairnbrae Jaces Elton
 Dam: Broadlin Constance 2565 P EX92
 Source: Broadlin Jerseys, Wonthaggi, VIC
 DOB: 08/04/2011 HB: 622118

Production							Workability		
ASI	kgP	P%	Milk	kgF	F%	Rel%	M Speed	Temp	Like
96	8	0.30%	-165	13	0.41%	99	102	104	104

Health							Type		
Cell Count	Mastitis Res	Dtr Fertility	Gestation	Survival	Heat Tol	Feed Saved	Overall Type	Mammary	
132 / 99	104 / 99	97 / 98	-1 / 99	107 / 97	93 / 38	-150 / 44	107	104	

Type							Workability		
Stature	Bone Quality	Angularity	Muzzle Width	Body Depth	Chest Width	Pin Width	M Speed	Temp	Like
103	92	105	111	111	113	108	106	110	103

Daughter, Colmarco Impulse 12th



Bercar Bestyet
BESTYET 12JJS31
 Oliver x Raceway
A22

BPI **200/66%**

Sire: Dutch Hollow Oliver P
 Dam: Bercar Beauty EX91
 Source: Bercar Jerseys, Bamawm, VIC
 DOB: 27/07/2019 HB: 779733

Production							Workability		
ASI	kgP	P%	Milk	kgF	F%	Rel%	M Speed	Temp	Like
119	18	0.14%	346	16	-0.05%	77	101	104	107

Health							Type		
Cell Count	Mastitis Res	Dtr Fertility	Gestation	Survival	Heat Tol	Feed Saved	Overall Type	Mammary	
120 / 70	105 / 64	101 / 54	-3 / 57	108 / 51	96 / 38	-64 / 28	108	109	

Type							Workability		
Stature	Bone Quality	Angularity	Muzzle Width	Body Depth	Chest Width	Pin Width	M Speed	Temp	Like
104	104	107	106	105	98	104	104	103	99

MGS, RACEWAY



Kings Ville Boost
BOOST 34JJS03
 Publican x David
A22

BPI **250/61%**

Sire: White Star Patrick
 Dam: Kings Ville SCD Bells 78 EX90
 Source: Kings Ville Jerseys, Drouin West, VIC
 DOB: 18/07/2019 HB: 778646

Production							Workability		
ASI	kgP	P%	Milk	kgF	F%	Rel%	M Speed	Temp	Like
210	21	0.46%	4	35	0.66%	73	104	103	106

Health							Type		
Cell Count	Mastitis Res	Dtr Fertility	Gestation	Survival	Heat Tol	Feed Saved	Overall Type	Mammary	
88 / 65	97 / 55	99 / 46	0 / 60	111 / 45	89 / 38	-91 / 24	108	108	

Type							Workability		
Stature	Bone Quality	Angularity	Muzzle Width	Body Depth	Chest Width	Pin Width	M Speed	Temp	Like
106	102	106	110	104	101	101	103	103	93

Dam, Kingsville SCD Bell 78



Brookbora Borung

BORUNG

Malachi x Askn

12JJS32

A22

BPI

181/59%

Production							Workability		
ASI	kgP	P%	Milk	kgF	F%	Rel%	M Speed	Temp	Like
97	10	0.19%	20	19	0.33%	71	101	104	106

Health							Type		
Cell Count	Mastitis Res	Dtr Fertility	Gestation	Survival	Heat Tol	Feed Saved	Overall Type	Mammary	
136 / 63	107 / 57	99 / 44	-1 / 63	113 / 42	98 / 38	-47 / 23			

Type							Workability		
Overall Type	Mammary	Stature	Bone Quality	Angularity	Muzzle Width	Body Depth	M Speed	Temp	Like
106	108	105	101	103	105	97	102	104	106
		Pin Set	Loin Strength	Rear Leg Set	Rear Leg Rear View	Udder Texture	100	97	103
		Pin Width	Fore Attach	Udder Depth	Teat Place Front	Teat Place Rear	96	102	105
							104	106	97

Sire:	Ahlem Perform Malachi
Dam:	Brookbora Love Lies 736 EX91
Source:	Brookbora Jerseys, Tennyson, VIC
DOB:	10/09/2019
HB:	779159



White Star Douglas

DOUGGAN

David x Murmur

12JJP26

A22

BPI

278/66%

Production							Workability		
ASI	kgP	P%	Milk	kgF	F%	Rel%	M Speed	Temp	Like
212	25	0.44%	150	28	0.38%	76	102	102	104

Health							Type		
Cell Count	Mastitis Res	Dtr Fertility	Gestation	Survival	Heat Tol	Feed Saved	Overall Type	Mammary	
138 / 70	104 / 64	102 / 56	-1 / 97	108 / 55	90 / 38	-22 / 27			

Type							Workability		
Overall Type	Mammary	Stature	Bone Quality	Angularity	Muzzle Width	Body Depth	M Speed	Temp	Like
97	101	99	96	95	97	102	102	102	104
		Pin Set	Loin Strength	Rear Leg Set	Rear Leg Rear View	Udder Texture	101	99	99
		Pin Width	Fore Attach	Udder Depth	Teat Place Front	Teat Place Rear	101	101	101
							99	98	98

Sire:	Sunset Canyon David
Dam:	White Star 5586 GP81
Source:	White Star Jerseys, Noorat, VIC
DOB:	08/03/2017
HB:	743169



Beulah Hipwood P

HIPWOOD P

Oliver x Brax

12JJR20

A22

BPI

177/66%

Production							Workability		
ASI	kgP	P%	Milk	kgF	F%	Rel%	M Speed	Temp	Like
111	15	0.09%	310	23	0.12%	78	102	105	107

Health							Type		
Cell Count	Mastitis Res	Dtr Fertility	Gestation	Survival	Heat Tol	Feed Saved	Overall Type	Mammary	
103 / 70	99 / 64	100 / 53	0 / 78	109 / 51	96 / 38	-73 / 28			

Type							Workability		
Overall Type	Mammary	Stature	Bone Quality	Angularity	Muzzle Width	Body Depth	M Speed	Temp	Like
107	109	106	102	105	102	99	102	105	107
		Pin Set	Loin Strength	Rear Leg Set	Rear Leg Rear View	Udder Texture	103	99	111
		Pin Width	Fore Attach	Udder Depth	Teat Place Front	Teat Place Rear	103	103	110
							104	95	103

Sire:	Dutch Hollow Oliver P
Dam:	Beulah Brax V Vanessa VG86
Source:	Beulah Jerseys, Wonthaggi, VIC
DOB:	06/03/2018
HB:	36725



Loxleigh Hatman Vince 5963

INVINCIBLE

Hatman x Valentino

12JJN20

A22

BPI

213/68%

Production							Workability		
ASI	kgP	P%	Milk	kgF	F%	Rel%	M Speed	Temp	Like
152	13	0.38%	-133	26	0.63%	79	104	105	106

Health							Type		
Cell Count	Mastitis Res	Dtr Fertility	Gestation	Survival	Heat Tol	Feed Saved	Overall Type	Mammary	
109 / 70	101 / 66	96 / 59	1 / 95	108 / 58	91 / 38	-135 / 29			

Type							Workability		
Overall Type	Mammary	Stature	Bone Quality	Angularity	Muzzle Width	Body Depth	M Speed	Temp	Like
111	113	105	101	109	110	108	104	107	109
		Pin Set	Loin Strength	Rear Leg Set	Rear Leg Rear View	Udder Texture	104	98	110
		Pin Width	Fore Attach	Udder Depth	Teat Place Front	Teat Place Rear	104	101	107
							104	96	96

Sire:	Broadlin Hatman
Dam:	Loxleigh Valentino Vanessa 5408 EX90
Source:	Loxleigh Jerseys, Tallygaroopna, VIC
DOB:	04/08/2016
HB:	727395



Broadlin 179 Glenferrie

MANLY

12JJP27

Glenferrie x Valentino

A22

BPI 199/64%

Sire: Kaarmona Glenferrie
 Dam: Broadlin Ilagay 3179 EX90
 Source: Broadlin Jerseys, Wonthaggi, VIC
 DOB: 28/08/2017 HB: 745217

Production							dtrs herds % RIP			Workability			dtrs herds 60% rel		
ASI	kgP	P%	Milk	kgF	F%	Rel%				M Speed	Temp	Like			
138	17	0.22%	196	24	0.25%	75				104	104	106			

Health															
Cell Count	Mastitis Res	Dtr Fertility	Gestation	Survival	Heat Tol	Feed Saved									
116 / 68	105 / 63	96 / 49	-1 / 89	110 / 50	92 / 38	-9 / 27									

Type							dtrs herds 55% rel								
Overall Type															
Mammary	106	107	Stature	101	Pin Set	108	Rear Udder Height	103							
			Bone Quality	103	Loin Strength	108	Rear Udder Width	106							
			Angularity	104	Rear Leg Set	99	Centre Ligament	106							
			Muzzle Width	104	Rear Leg Rear View	97	Teat Place Front	107							
			Body Depth	99	Udder Texture	107	Teat Place Rear	108							
			Chest Width	101	Udder Depth	97	Teat Length	97							
			Pin Width	102	Fore Attach	99									



Beulah Mr Fertility

MRFERTILITY

12JJP29

Levigenes x Valerian

A22

BPI 226/66%

Sire: Broadlin Levigenes
 Dam: Beulah Val L Paint 3 GP83
 Source: Beulah Jerseys, Wonthaggi, VIC
 DOB: 15/08/2017 HB: 1710138

Production							dtrs herds % RIP			Workability			dtrs herds 62% rel		
ASI	kgP	P%	Milk	kgF	F%	Rel%				M Speed	Temp	Like			
123	11	0.40%	-218	13	0.48%	77				100	101	102			

Health															
Cell Count	Mastitis Res	Dtr Fertility	Gestation	Survival	Heat Tol	Feed Saved									
118 / 70	107 / 63	110 / 55	2 / 88	108 / 53	97 / 38	20 / 26									

Type							dtrs herds 62% rel								
Overall Type															
Mammary	101	101	Stature	98	Pin Set	101	Rear Udder Height	102							
			Bone Quality	100	Loin Strength	100	Rear Udder Width	95							
			Angularity	97	Rear Leg Set	98	Centre Ligament	99							
			Muzzle Width	97	Rear Leg Rear View	101	Teat Place Front	106							
			Body Depth	98	Udder Texture	100	Teat Place Rear	102							
			Chest Width	102	Udder Depth	104	Teat Length	101							
			Pin Width	97	Fore Attach	100									



Wallacedale Pickett

PICKETT

12JJS30

Matt x Valerian

A22

BPI 245/68%

Sire: Wilsonview IF Matt
 Dam: Wallacedale Vals Melanie EX92
 Source: Wallacedale Jerseys, Poowong North, VIC
 DOB: 28/08/2019 HB: 778771

Production							dtrs herds % RIP			Workability			dtrs herds 68% rel		
ASI	kgP	P%	Milk	kgF	F%	Rel%				M Speed	Temp	Like			
169	17	0.36%	3	30	0.57%	79				102	102	104			

Health															
Cell Count	Mastitis Res	Dtr Fertility	Gestation	Survival	Heat Tol	Feed Saved									
141 / 70	110 / 68	100 / 61	0 / 64	108 / 59	91 / 38	-16 / 29									

Type							dtrs herds 62% rel								
Overall Type															
Mammary	104	104	Stature	102	Pin Set	99	Rear Udder Height	104							
			Bone Quality	100	Loin Strength	102	Rear Udder Width	101							
			Angularity	103	Rear Leg Set	100	Centre Ligament	103							
			Muzzle Width	99	Rear Leg Rear View	103	Teat Place Front	104							
			Body Depth	97	Udder Texture	103	Teat Place Rear	102							
			Chest Width	100	Udder Depth	104	Teat Length	99							
			Pin Width	101	Fore Attach	99									



Beulah Tahbilk

TAHBILK

12JJJ08

Vanahlem x Navara

243615

A22

BPI 168/90%

Sire: Pannoo Abe Vanahlem
 Dam: Beulah Navara M Poppins VG85
 Source: Beulah Jerseys, Wonthaggi, VIC
 DOB: 16/03/2012 HB: 654869

Production							448 dtrs 82 herds 45% RIP			Workability			172 dtrs 38 herds 95% rel		
ASI	kgP	P%	Milk	kgF	F%	Rel%				M Speed	Temp	Like			
174	16	0.53%	-253	22	0.67%	98				104	104	106			

Health															
Cell Count	Mastitis Res	Dtr Fertility	Gestation	Survival	Heat Tol	Feed Saved									
88 / 97	102 / 98	93 / 95	3 / 99	104 / 92	94 / 38	-120 / 43									

Type							117 dtrs 31 herds 93% rel								
Overall Type															
Mammary	107	106	Stature	105	Pin Set	109	Rear Udder Height	100							
			Bone Quality	101	Loin Strength	109	Rear Udder Width	109							
			Angularity	106	Rear Leg Set	100	Centre Ligament	100							
			Muzzle Width	107	Rear Leg Rear View	109	Teat Place Front	110							
			Body Depth	105	Udder Texture	101	Teat Place Rear	115							
			Chest Width	106	Udder Depth	94	Teat Length	98							
			Pin Width	115	Fore Attach	101									



Cairnbrae Tyrone
TYBALT 12JJN17
Valentino x Tbone

423561
A22

BPI

74/70%

Sire: All Lynns Louie Valentino
Dam: Cairnbrae Tbone Estelle EX93
Source: Cairnbrae Jerseys, Irrewillipe, VIC
DOB: 19/06/2016 HB: 724351

Production

ASIkgPP%MilkkgFF%Rel%

4240.03%75130.16%80

Health

Cell CountMastitis ResDtr FertilityGestationSurvivalHeat TolFeed Saved

113 / 72103 / 7093 / 65-3 / 93112 / 6496 / 38-111 / 31

Type

Overall TypeMammary

111113

StatureBone QualityAngularityMuzzle WidthBody DepthChest WidthPin Width

104102108107106105106

Pin SetLoin StrengthRear Leg SetRear Leg Rear ViewUdder TextureUdder DepthFore Attach

10310796102104102109

Rear Udder HeightRear Udder WidthCentre LigamentTeat Place FrontTeat Place RearTeat Length

10711110410710696

TYBALT

White Star Valenblast
VALENBLAST 12JJN16
Valentino x Sandblast

432561
A22

BPI

299/68%

Sire: All Lynns Louie Valentino
Dam: White Star 5464 GP81
Source: White Star Jerseys, Noorat, VIC
DOB: 17/08/2016 HB: 724522

Production

ASIkgPP%MilkkgFF%Rel%

228230.53%-37350.70%78

Health

Cell CountMastitis ResDtr FertilityGestationSurvivalHeat TolFeed Saved

122 / 70103 / 7797 / 600 / 94109 / 5996 / 38-51 / 29

Type

Overall TypeMammary

106111

StatureBone QualityAngularityMuzzle WidthBody DepthChest WidthPin Width

105971041039999110

Pin SetLoin StrengthRear Leg SetRear Leg Rear ViewUdder TextureUdder DepthFore Attach

1051059810110298102

Rear Udder HeightRear Udder WidthCentre LigamentTeat Place FrontTeat Place RearTeat Length

10811210410710296

VALENBLAST

Stonyrun Aus Tbone Vicks 2
VICKS 12JJM12
Tbone x VanAhlem

561432
A22

BPI

213/78%

Sire: Richies Jace Tbone A364
Dam: Stonyrun Aus Vanahlem Violet VG86
Source: Stonyrun Aus, Shady Creek, VIC
DOB: 21/07/2015 HB: 706097

Production

ASIkgPP%MilkkgFF%Rel%

15470.54%-547301.13%90

Health

Cell CountMastitis ResDtr FertilityGestationSurvivalHeat TolFeed Saved

134 / 84109 / 9097 / 63-3 / 94108 / 6593 / 3827 / 34

Type

Overall TypeMammary

106107

StatureBone QualityAngularityMuzzle WidthBody DepthChest WidthPin Width

94103104101104105101

Pin SetLoin StrengthRear Leg SetRear Leg Rear ViewUdder TextureUdder DepthFore Attach

101103999710399105

Rear Udder HeightRear Udder WidthCentre LigamentTeat Place FrontTeat Place RearTeat Length

103102107104105103

VICKS

Waikato Farm Caesar
ARBCAESAR 12UUP04
Aotearoa x Kenneth

423561
A22

BPI

180/43%

Sire: Waikato Farm Aotearoa
Dam: Waikato Farm Brooke 3934
Source: Waikato Farm Aussie Reds, Mount Schank, SA
DOB: 16/03/2017 HB: 29019

Production

ASIkgPP%MilkkgFF%Rel%

150210.11%570330.12%50

Health

Cell CountMastitis ResDtr FertilityGestationSurvivalFeed Saved

109 / 45101 / 52104 / 39-2 / 80103 / 27-44 / 14

Type

Overall TypeMammaryFeet & LegsRumpDairy Strength

999796102102

StatureBone QualityAngularityMuzzle WidthBody DepthChest WidthPin Width

1021039910410110295

Pin SetLoin StrengthHeel DepthRear Leg SetRear Leg Rear ViewUdder TextureUdder Depth

1009797104999999101

Fore AttachRear Udder HeightRear Udder WidthCentre LigamentTeat Place FrontTeat Place RearTeat Length

999996989998101

ARBCAESAR

Beaulands Swannies

ARBCYGNET

Foske x Olstad

12UUJ04
A12

BPI

216/83%

Sire:

V Foske

Dam:

Beaulands Olstad Birdie VG86

Source:

Beaulands Aussie Reds, Nowra, NSW

DOB:

18/03/2012

HB:

21177

Production							Workability		
ASI	kgP	P%	Milk	kgF	F%	Rel%	M Speed	Temp	Like
128	24	0.05%	781	23	-0.15%	93	104	102	106

Health					
Cell Count	Mastitis Res	Dtr Fertility	Gestation	Survival	Feed Saved
112 / 89	98 / 93	104 / 86	0 / 95	107 / 80	11 / 36

Type							
Overall Type	99	Stature	96	Pin Set	108	Fore Attach	98
Mammary	106	Bone Quality	93	Loin Strength	107	Rear Udder Height	100
Feet & Legs	103	Angularity	98	Heel Depth	104	Rear Udder Width	106
Rump	107	Muzzle Width	103	Rear Leg Set	101	Centre Ligament	104
Dairy Strength	102	Body Depth	103	Rear Leg Rear View	100	Teat Place Front	112
		Chest Width	103	Udder Texture	98	Teat Place Rear	106
		Pin Width	106	Udder Depth	96	Teat Length	88



Beaulands Lindt

ARBLINDT

Foske x Fastrup

354126
12UUM02
A22

BPI

152/66%

Sire:

V Foske

Dam:

Beaulands Fast Rosie 6

Source:

Beaulands Aussie Reds, Nowra, NSW

DOB:

12/06/2015

HB:

26921

Production							Workability		
ASI	kgP	P%	Milk	kgF	F%	Rel%	M Speed	Temp	Like
155	15	0.24%	86	34	0.44%	78	99	100	105

Health					
Cell Count	Mastitis Res	Dtr Fertility	Gestation	Survival	Feed Saved
107 / 66	100 / 85	99 / 52	-4 / 94	107 / 50	-93 / 23

Type							
Overall Type	103	Stature	104	Pin Set	107	Fore Attach	101
Mammary	102	Bone Quality	100	Loin Strength	108	Rear Udder Height	96
Feet & Legs	105	Angularity	106	Heel Depth	105	Rear Udder Width	105
Rump	106	Muzzle Width	103	Rear Leg Set	102	Centre Ligament	102
Dairy Strength	106	Body Depth	105	Rear Leg Rear View	106	Teat Place Front	104
		Chest Width	104	Udder Texture	102	Teat Place Rear	100
		Pin Width	108	Udder Depth	97	Teat Length	96



Orana Oscar

ARBOSCAR

Foske x Tosikko

423561
12UUL05
A22

BPI

180/67%

Sire:

V Foske

Dam:

Orana Atosikko Rose

Source:

Orana Aussie Reds, Bena, VIC

DOB:

08/08/2014

HB:

26901

Production							Workability		
ASI	kgP	P%	Milk	kgF	F%	Rel%	M Speed	Temp	Like
114	12	0.15%	152	25	0.26%	78	103	103	104

Health					
Cell Count	Mastitis Res	Dtr Fertility	Gestation	Survival	Feed Saved
126 / 68	102 / 84	100 / 51	0 / 92	105 / 52	-66 / 27

Type							
Overall Type	104	Stature	101	Pin Set	101	Fore Attach	108
Mammary	105	Bone Quality	97	Loin Strength	104	Rear Udder Height	98
Feet & Legs	106	Angularity	104	Heel Depth	105	Rear Udder Width	103
Rump	100	Muzzle Width	101	Rear Leg Set	104	Centre Ligament	105
Dairy Strength	106	Body Depth	105	Rear Leg Rear View	104	Teat Place Front	105
		Chest Width	106	Udder Texture	102	Teat Place Rear	101
		Pin Width	103	Udder Depth	104	Teat Length	96



Johville Park Scarebear

ARBSCAREBEAR

Foske x Andersta

12UUH15
A12

BPI

181/88%

Sire:

V Foske

Dam:

Johville Park Krissy 708

Source:

Johville Park Aussie Reds, Leitchville, VIC

DOB:

22/08/2011

HB:

24934

Production							Workability		
ASI	kgP	P%	Milk	kgF	F%	Rel%	M Speed	Temp	Like
109	15	0.12%	322	20	0.09%	96	104	102	104

Health					
Cell Count	Mastitis Res	Dtr Fertility	Gestation	Survival	Feed Saved
117 / 95	97 / 96	104 / 88	-3 / 99	105 / 84	117 / 40

Type							
Overall Type	94	Stature	93	Pin Set	104	Fore Attach	96
Mammary	98	Bone Quality	105	Loin Strength	100	Rear Udder Height	91
Feet & Legs	99	Angularity	101	Heel Depth	105	Rear Udder Width	100
Rump	103	Muzzle Width	95	Rear Leg Set	112	Centre Ligament	100
Dairy Strength	97	Body Depth	98	Rear Leg Rear View	99	Teat Place Front	110
		Chest Width	96	Udder Texture	101	Teat Place Rear	104
		Pin Width	99	Udder Depth	97	Teat Length	92



ARB YOUNG SIRES

Beaulands Ninjago

A22

ARBNINJAGO

Valpas x Foske

NASIS: 12UUN03

Sire: Sammatin Valpas

Dam: Beaulands Foske Leaf GP84

Breeder: Beaulands Aussie Reds, Nowra, NSW

ARBNINJAGO is a Valpas son from Australia's Number 1 BPI herd. His VFoske dam is a consistent calving high producer with good components and 5 lactations to her credit. A beautiful stylish bull backed by superior cow performance.

Beaulands Marnus

A22

ARBMARNUS

VikFilur x Tokyo

NASIS: 12UUS10

Sire: VR Fonseca Filur

Dam: Beaulands Tokyo Princess

Breeder: Beaulands Aussie Reds, Nowra, NSW

ARBMARNUS is from a Tokyo dam who is the number 11 BPI and the number 5 HWI Aussie Red cow. Sired by Filur, ARBMARNUS is one of the highest profit potential sires on the market. Another product of the Bosgown Princess family via Beaulands.

Orana Nathan

A22

ARBNATHAN

Vikviljar x Gibson

NASIS: 12UUS11

Sire: VR Kuuselen Vimur Viljar

Dam: Orana 5642

Breeder: T, L & N Orana Aussie Reds, Bena, VIC

ARBNATHAN is a VILJAR son from a fantastic Gibson daughter with a high protein ABV. Backed by generations of consistent production, calving and solid ABVs, ARBNATHAN is a great option for breeders looking for a balanced young sire.

Johville Park Tedebear P

A12

ARBTEDEBEAR P

Onstad x Scarebear

NASIS: 12UUS12

Sire: Onstad P

Dam: Johville Park Scarebear 5533

Breeder: Johville Park Aussie Reds, Leitchville, VIC

ARBTEDEBEAR is a new Polled option for Red Breeders. His dam is a high PI daughter of ARBSCAREBEAR who produced over 10,000 litres on her second lactation. The next dam is by ARBBOWDOWN. Solid Australian performance under commercial conditions.

Beaulands Mcguire

A12

ARBEDDIE

Foscena x Tosikko



NASIS: 12UUP08

Sire: Foscena

Dam: Beaulands Tosikko Stately 25169 VG87

Breeder: Beaulands Aussie Reds, Nowra, NSW

Beaulands Ponga

A22

ARBPONGA

Enger x Foske



NASIS: 12UUP06

Sire: Enger

Dam: Beaulands Foske Leaf 25149 GP84

Breeder: Beaulands Aussie Reds, Nowra, NSW

Johville Park Yogi Bear

A22

ARBYOGIBEAR

ARBScarebear x David



NASIS: 12UUP07

Sire: Johville Park Scarebear

Dam: Johville Park David 5292

Breeder: Johville Park Aussie Reds, Leitchville, VIC

UNDERSTANDING THE ABVs

Calister Maebull

MAEBULL

Palermo x Shottle

12FFJ49

sexed available

423651

A22

BPI

303/89%



SEMEN Fertility
+0.68%

Sire: Glenn-Ann Palermo

Dam: Morningview Shtl Lucy EX2E

Source: Calister Holsteins, Calivil, VIC

DOB: 27/07/2012

HB: 1712643

Production

ASI	kgP	P%	Milk	kgF	F%	Rel%
117	18	0.14%	380	18	0.03%	98

561 dtrs 93 herds 75% RIP

Workability

M Speed	Temp	Like
101	101	104

71 dtrs 22 herds 90% rel

Health

Cell Count	Mastitis Res	Dtr Fertility	Gestation	Calving Ease	Survival	Heat Tol	Feed Saved
191 / 97	109 / 98	110 / 93	1 / 99	102 / 99	109 / 89	102 / 38	15 / 43

Type

Overall Type	103	Stature	99	Pin Set	99	Fore Attach	106
Mammary	100	Bone Quality	90	Loin Strength	97	Rear Udder Height	101
Feet & Legs	100	Angularity	96	Heel Depth	98	Rear Udder Width	100
Rump	100	Muzzle Width	98	Rear Leg Set	101	Centre Ligament	96
Dairy Strength	99	Body Depth	99	Rear Leg Rear View	100	Teat Place Front	96
		Chest Width	103	Udder Texture	99	Teat Place Rear	94
		Pin Width	101	Udder Depth	104	Teat Length	102

70 dtrs 28 herds 86% rel

Daughter, Calister Mae Lady



Balanced Profit Index (BPI)

The Balanced Performance Index is an economic index that blends production, type and health traits for maximum profit.

Production ABV

Production traits are expressed in their units of measurement from a rolling base of 0, which represents the average cow currently milking in Australia. The reliability figure is an estimate of potential proof change based on the number of daughters, herds, test days and genomic data. The higher the reliability of a trait, the lower the chance of proof movement.

Australian Selection Index (ASI)

Like the BPI, the ASI is expressed as a dollar value. This production based index is weighted using a similar ratio of milk:fat:protein to what most Australian dairy farmers are paid for their milk. Index weightings are as follows: (6.92 x Protein kg ABV) + (1.79 x Fat kg ABV) - (0.01 x Milk ABV).

Survival

Survival is a measurement of the bull's daughters' ability to last in the herd. Bulls with ratings greater than 100 breed daughters that are likely to last longer in the herd.

Workability Traits

These are calculated from information provided by Australian farmers who participate in a recognised herd recording program. They are expressed as a percentage deviating (+/-) from the base (average) of 100. In this example, 102 for milking speed indicates that the bull is 2% above average for this trait i.e. his daughters on average milk faster. The reliability percentage is generated from the number of daughters and contemporaries scored and the number of herds.

Type

NEW

Type ABVs describe the conformation of a bulls daughters. DataGene publishes Type ABVs for twenty-two linear traits and composite traits including Overall Type, Mammary System, Feet & Legs, Rump and Dairy Strength. Composites combine individual type traits and reflect the trait weightings and ideals set by breed organisations. For Composite Type ABVs, the average is 100 and one standard deviation is set to 5. To improve type composites, use bulls with ABVs more than 100. For individual Type ABVs, consider the ideal for that trait, the average linear for that trait, and the direction for breeding.

Cell Count

The Cell Count ABV is useful to breed cows with lower cell counts, thereby reducing a herd's bulk milk cell count. Milk payments are penalised for farms with high bulk milk cell counts. Bulls with breeding values above 100 will improve your bulk milk cell count.

Semen Fertility

Semen fertility ratings are not breeding values. They are calculated using insemination data supplied by herd test centres. Bulls with positive ratings have better conception rates than average. The majority of bulls fall into the range of + or - 3%.

Calving Ease

The Calving Ease ABV is based on pedigree data, genomic data calving ease scores and calf size supplied in reports from farmers. Easier calving sires have figures greater than 100.

Gestation Length

NEW

The Gestation Length ABV is expressed as the number of days of gestation more, or less, than an average of 0. Bulls with a Gestation Length ABV of less than 0 have a shorter Gestation Length than the average. One ABV unit represents about 1 day shorter gestation. As half the genes come from the bull, a bull with a Gestation Length ABV of -8 would have calves that are expected to be born 4 days earlier than the due date.

Feed Saved

Feed Saved is Australia's Feed Conversion Efficiency breeding value. It combines genomic data with estimates of maintenance requirements to predict the feed intake of a bulls daughters. It is expressed as kgs of feed saved per lactation. E.g. if a bull has an ABV of 100, then on average his daughters will eat 100 kgs less of feed than the daughters of an average (0) bull. If a bull has an ABV of -50, then this bulls daughters will eat 50 kgs more feed than daughter of the average bull.

Mastitis Resistance

NEW

The Mastitis Resistance ABV draws three sets of information to provide a breeding value for selection to improve mastitis resistance: 305-day somatic cell count, udder depth and clinical mastitis records. This combination delivers an ABV that directly targets mastitis, whereas the Cell Count ABV has been used as an indirect selection criterion for mastitis resistance. Mastitis Resistance is improved by using bulls above 100.

Heat Tolerance

The Heat Tolerance ABV describes an animals ability to maintain production during hot and humid conditions. Animals with higher Heat Tolerance ABV's are less likely to suffer production drops in hot weather.

Daughter Fertility

The Daughter Fertility ABV is calculated using Non Return Rate data as well as re-calving date. Bulls with Daughter fertility ABVs greater than 100 will improve Daughter Fertility. A bull with an ABV of 104 is 4% better than the average bull and will deliver on average a 2% improvement in 6 week Non Return Rate.



Genetics Australia Co-Operative Limited

Parwan Park 144 Woolpack Road,
Bacchus Marsh, Victoria,
Australia 3340

EXPORT MANAGER

Rob Derksen

M: +61 418 129 606

P: +61 3 5367 3888

F: +61 3 5367 5100

E: rderksen@genaust.com.au

The Australian Dairy Cow

Efficient, adaptable and profitable.

Genetics Australia is a farmer owned Cooperative established in 1958. The Cooperative has been a major developer of dairy genetics and played a pivotal role in the genetic improvement of the Australian dairy herd for 60 years.

Dairy farming is well established across Australia and a wide range of dairy producers is produced in climatic conditions that range from temperate in the south of the country to the more sub-tropical north. Feed systems and cow input vary according to milk payment systems, availability to quality feed and seasonal differences so genetics produced in Australia need to perform in an industry unlike many other dairy producing countries.

Three major breeds – Holstein, Jersey and Australian Red have been developed in Australia and the best bloodlines have been sourced and introduced from around the world. Cow families have been developed in Australia that have the ability to transmit the production, management and type traits necessary to perform for many profitable lactations.

Australian genetics are now available in many countries. Experience the advantages of the Australian cow in your herd by introducing some Australian genetics into your herd today.



Distributor: