

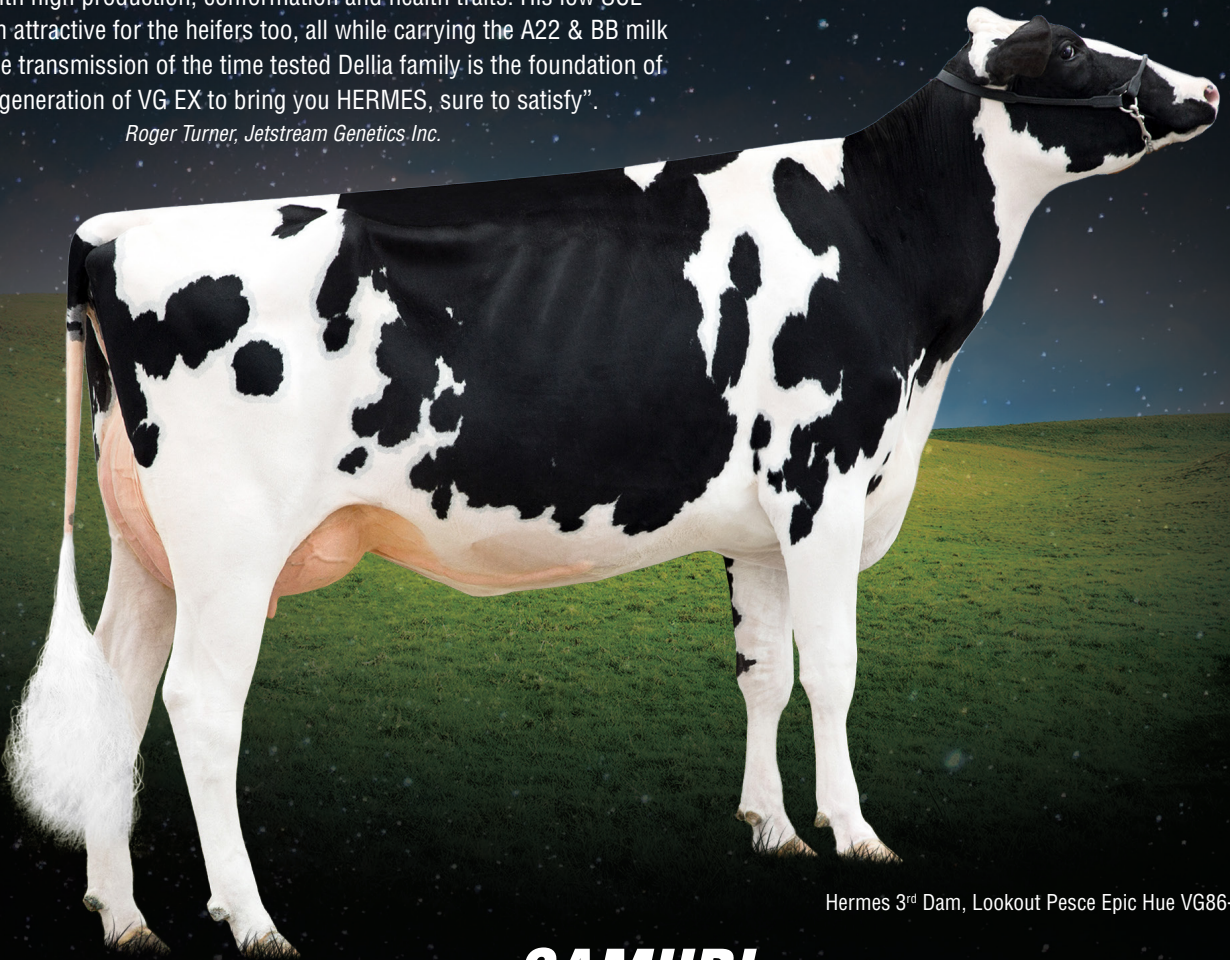
A POWERFUL GENETIC DUO

HERMES JSHERMES Positive x Bourbon

A22 | BPI +456 | HWI +462 | Type +107 | Mammary +108 | Survival +112 | Dtr Fert +111

"JSHERMES delivers exactly what breeders are searching for, trouble free cows with high production, conformation and health traits. His low SCE makes him attractive for the heifers too, all while carrying the A22 & BB milk genes. The transmission of the time tested Dellia family is the foundation of 10 generation of VG EX to bring you HERMES, sure to satisfy".

Roger Turner, Jetstream Genetics Inc.

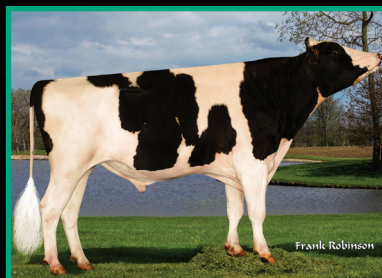


Hermes 3rd Dam, Lookout Pesce Epic Hue VG86-2YR

SAMURI 7H012897 AltaSpring x Supersire

A22 | BPI +358 | HWI +351 | Type +104 | Mammary +104 | Survival +108 | Dtr Fert +111

SAMURI sires youthful udders, strong attachments, and exceptional mobility. With his +2.2 SCR and 99% reliability, he is a great choice for sexed semen usage to generate more high value female pregnancies! This A22 sire, now with more than 3,000 milking daughters, has steadied his position of both Type & Udder composites, positive Health and Fitness traits and has a BV of \$562 Net Merit & +2702 TPI.



SAMURI



DAM, OCD SUPERSIRE 9882

December 2020