

# HOLSTEIN 2026 EXPORT SIRE DIRECTORY

– April 2026 ABV



# CONTENTS

## AUSTRALIAN HOLSTEIN

|       |                       |             |         |
|-------|-----------------------|-------------|---------|
| 3     | INTRO                 |             |         |
| 4     | TYPE DATA PANEL       |             |         |
| 5     | PRODUCTION DATA PANEL |             |         |
| 6     | TRAIT LEADERS         |             |         |
| 7     | ACDC                  | AUSTEN      |         |
| 8     | AUSTRADER             | CIROCCO     |         |
| 9     | COINMAKER             | CONRAD      |         |
| 10    | DECIPHER              | EASTERN     |         |
| 11    | ELEVENTHOUR           | ELPASO      |         |
| 12    | ELVIN                 | ENZO        |         |
| 13    | FENDER                | HEYHEY      |         |
| 14    | HIGHROAD              | HUCKLEBERRY |         |
| 15    | ILLUMINATOR           | IMPROVER    |         |
| 16    | JFROST                | JOBOLT      |         |
| 17    | JORDLIV               | KEATON      |         |
| 18    | LENN                  | LASTIN      |         |
| 19    | LOLLYMAN              | LUKIE       |         |
| 20    | LIONIZE               | LANGLEY     | LOWMAN  |
| 21    | MDOUGLAS              | MADAGASCAR  |         |
| 22    | MAEBULL               | NORTHEAST   | MRRIGHT |
| 23    | NOUGAT                | OLIVERTWIST |         |
| 24    | OMG                   | PATSYD      |         |
| 25    | PILBARA               | POLLGARTH   | SHERIFF |
| 26    | POLMAX                | RIZBOY      |         |
| 27    | SLHONDA               | SLICEMAN    |         |
| 28    | TBOLT                 | TINAMBA     |         |
| 29    | TOMMYDEE              | TWITTER     |         |
| 30    | VARLEY                | ZEPHYR      |         |
| 31    | DAIRY BEEF            |             |         |
| 32    | TYPE ABVS             |             |         |
| 33-35 | UNDERSTANDING ABVS    |             |         |

**Front Cover:** Photograph on our cover is Kiarna Murfett. Kiarna manages 300 cows for farm owner Paul Moloney in Terang, Western Victoria.

# More than 65 years of Genetic Improvement

Genetics Australia was formed in 1958 as a farmer owned cooperative and commended progeny testing bulls in 1960.

As the use of AI became more widespread around Australia the cooperative developed many top proven bulls that went on to have a significant influence on genetic improvement in the Australia dairy herd for generations.

In the 1060's and 70's these Australian proven bulls were blended with the best from New Zealand to develop an efficient adaptable cow able to convert pasture into profitable milk production.

By the mid-1980s as the widespread movement of genetics grew genetics from North America and Europe

were infused with the best of the local population. Australian breeders embraced this new source of genetics and today , together with the use of new technologies Australian bred bulls are capable of competing with the best sources of genetics from around the world.

The Australian cow is an efficient producer in a low-cost grazing system but can also respond when challenged with additional quality feed will respond with increased milk production. Through the aggressive development of non-production traits and the importance placed on traits such as Fertility, Feed Efficiency, mastitis resistance and functional type the Australian dairy cow can produce for many profitable lactations.



### Genetics Australia Holdings and all affiliates - Sire Directory Disclaimer Statement

**Disclaimer:** The content of this Sire Directory is provided for information only. It is published with care and attention to accuracy, nevertheless Genetics Australia Holdings Pty Ltd and all affiliates (GAH) accepts no liability if, for any reason the information is inaccurate or out of date whether negligent or otherwise.

**Limitation of Liability:** GAH warrants that it has clear title to the products sold and that all semen processed in its laboratory is processed under rigid quality controls. Since GAH does not control conditions under which its products are used it does not give, and its agents and employees are forbidden to give, any warranty expressed or implied as to the conception rate or productiveness or the results which may be obtained by the use of any product sold or in connection with any techniques recommended. GAH makes no other warranty of any kind whatsoever expressed or implied which extends beyond the description of its products. Where so permitted the liability of GAH for breach of a condition or warranty implied by statute is limited at GAH's option to the replacement or repair of the goods or the supply of equivalent goods or the cost of replacing or repairing the goods or of acquiring equivalent goods. So far as the law permits GAH shall not be liable in any way whatsoever for any indirect or consequential loss or loss of profit.

**Sexed (sorted) semen:** Artificial Insemination products (straws) that GAH offers for sale as sexed (sorted) semen using Sexing Technologies proprietary technology, shall only be used for single-use artificial insemination and not for in-vitro-fertilisation or embryo transfer.

**Source data:** Data referencing Australian Breeding values (ABVs) information is sourced from datagene April 2026 breeding value release.

# Better Herds Start with Better Decisions

**Better herds aren't built overnight or through a single decision. They're the result of consistent breeding choices and steady improvement, year after year.**

For more than 65 years, Genetics Australia has supported dairy farmers with one clear focus — delivering genetics that drive long-term herd performance. We put farmers first, sourcing the best genetics that will positively contribute to Australian farming systems from across the globe while continuing to build on the strength of Australian cow families developed over generations.

As a farmer-owned cooperative, we combine proven local genetics with the depth of the global gene pool. Our breeding solutions are designed specifically for Australian conditions and production

systems. This Sire Directory brings together bulls from Australia's leading genetic merit Holstein herds as well as bulls sired by Australian bulls bred from the heart of the best females in the Peak breeding program. It's of no surprise the world is recognising the strength of Australian genetics with progeny performing across the globe.

Our URUS partnership means we maintain strict laboratory standards through the relationship with PEAK and they invest heavily in ongoing product development to ensure reliable high fertility bovine semen to be able to deliver high-quality reproductive performance.

Australia's genetic evaluation system DataGene is highly regarded and recognised globally, with major contributions in traits such as feed efficiency and heat tolerance.

The Australian Breeding Value system is built to deliver profitable, long-lasting cows with the structure and resilience to perform across multiple lactations. Australian Holstein genetics are achieving strong results in diverse environments, from Latin America to high-input systems in China and Pakistan as well as more and more demand from Europe as they recognise the quality and efficiency of the Australian Holstein.

With world-class biosecurity and export capability, Australian Holstein genetics are trusted worldwide. We invite you to see the difference they can make in your herd.



**Rob Derksen**  
**Export Manager**  
**– Genetics Australia**



# Holstein Australian Breeding Values / April 2026

## PRODUCTION

| Bull Code   | A2  | Poll | Status | Pedigree                    | BPI | Rel% | HWI | SI  | ASI | Prot (Kg) | Prot % | Milk (L) | Fat (Kg) | Fat % | Rel % | Drs  | Herds | Overall Type | Mamm System | Milk Speed | Temp | Like | Cell Count | Mastitis Resist | Dtr Fert | Gest Lgth | Calv Ease | Rel % | Sire Still Birth% | Maternal Still Birth % |      |
|-------------|-----|------|--------|-----------------------------|-----|------|-----|-----|-----|-----------|--------|----------|----------|-------|-------|------|-------|--------------|-------------|------------|------|------|------------|-----------------|----------|-----------|-----------|-------|-------------------|------------------------|------|
| ACDC        | A22 |      |        | Powerhouse x Magicball      | 736 | 68   | 637 | 864 | 283 | 17        | 0.41   | -192     | 24       | 0.46  | 78    | G    | G     | 109          | 107         | 103        | 102  | 102  | 160        | 110             | 107      | 0         | 100       | 71    | 0                 | -4.4                   |      |
| AUSTEN      | A22 |      |        | Australlind x Wimbleton     | 798 | 65   | 713 | 967 | 405 | 18        | 0.46   | -242     | 42       | 0.76  | 77    | G    | G     | 107          | 110         | 102        | 101  | 103  | 124        | 103             | 111      | -2        | 101       | 70    | -2.5              | -0.9                   |      |
| AUSTRADER   | A22 |      |        | Australlind x AltaExquisite | 798 | 65   | 776 | 949 | 335 | 14        | 0.45   | -360     | 34       | 0.71  | 77    | G    | G     | 104          | 103         | 101        | 101  | 101  | 129        | 104             | 114      | -4        | 101       | 70    | -3.1              | -4.0                   |      |
| CIRCOGO     | P   |      |        | Cirrus x River              | 686 | 67   | 583 | 790 | 261 | 17        | 0.05   | 538      | 30       | 0.10  | 78    | G    | G     | 111          | 107         | 101        | 102  | 105  | 151        | 106             | 108      | 0         | 100       | 71    | -2.4              | -4.1                   |      |
| COINMAKER   | A22 |      |        | Rocknroll x Kenobi          | 562 | 68   | 473 | 616 | 249 | 14        | 0.27   | -9       | 24       | 0.36  | 78    | G    | G     | 108          | 108         | 100        | 100  | 102  | 144        | 103             | 107      | -2        | 100       | 99    | 1.0               | -2.0                   |      |
| CONRAD      | A12 |      |        | Yolo x Boti                 | 695 | 67   | 467 | 871 | 326 | 25        | 0.17   | 577      | 32       | 0.11  | 78    | G    | G     | 110          | 112         | 104        | 100  | 104  | 140        | 107             | 100      | 2         | 101       | 70    | -2.5              | -2.8                   |      |
| DECIPHER    | A22 |      |        | Letigo x Wrangler           | 434 | 89   | 352 | 533 | 101 | 15        | 0.15   | 243      | 1        | -0.13 | 98    | 553  | 52    | 109          | 106         | 102        | 102  | 103  | 139        | 109             | 103      | 4         | 100       | 99    | -0.7              | 6.8                    |      |
| EASTERN     | A22 |      |        | Hermes x Superdave          | 545 | 71   | 461 | 573 | 312 | 16        | 0.25   | 78       | 34       | 0.45  | 83    | 57   | 11    | 109          | 107         | 99         | 103  | 104  | 141        | 98              | 109      | -6        | 102       | 97    | -3.7              | -3.6                   |      |
| ELEVENTHOUR | A22 |      |        | Excitement x Captivating    | 470 | 65   | 327 | 567 | 269 | 10        | 0.20   | -33      | 33       | 0.50  | 76    | G    | G     | 105          | 108         | 104        | 102  | 103  | 129        | 100             | 100      | -3        | 102       | 68    | -3.5              | -5.2                   |      |
| ELPASO      | A12 |      |        | Excitement x Einstein       | 580 | 65   | 516 | 649 | 228 | 12        | 0.22   | 1        | 24       | 0.34  | 77    | G    | G     | 107          | 109         | 102        | 101  | 103  | 147        | 104             | 107      | -6        | 100       | 68    | -2.4              | -5.6                   |      |
| ELVIN       | A22 |      |        | Excitement x Porche         | 418 | 65   | 259 | 522 | 244 | 2         | 0.16   | -227     | 36       | 0.66  | 76    | G    | G     | 105          | 110         | 102        | 102  | 103  | 104        | 131             | 103      | 97        | -1        | 100   | 69                | -1.8                   | -4.5 |
| ENZO        | A12 |      |        | Droptop x Einstein          | 778 | 67   | 672 | 855 | 332 | 20        | 0.31   | 126      | 33       | 0.39  | 78    | G    | G     | 107          | 108         | 100        | 103  | 103  | 163        | 108             | 110      | -1        | 100       | 89    | -5.3              | -5.4                   |      |
| FENDER      | A22 |      |        | Rocknroll x Bandares        | 723 | 69   | 612 | 816 | 335 | 2         | 0.26   | -436     | 50       | 0.98  | 78    | G    | G     | 106          | 108         | 103        | 100  | 103  | 149        | 105             | 107      | -1        | 100       | 89    | -1.4              | -2.6                   |      |
| HEYHEY      | A12 |      |        | Hayk x Altatashback         | 820 | 66   | 712 | 994 | 407 | 14        | 0.41   | -271     | 48       | 0.85  | 76    | G    | G     | 104          | 104         | 102        | 101  | 103  | 160        | 107             | 108      | -5        | 99        | 71    | -3.3              | -3.2                   |      |
| HIGHROAD    | A22 |      |        | Pollgarth x Lundy           | 602 | 65   | 634 | 624 | 75  | 6         | 0.22   | -206     | 1        | 0.14  | 77    | G    | G     | 109          | 107         | 101        | 101  | 102  | 140        | 108             | 114      | 1         | 100       | 68    | -0.2              | -1.7                   |      |
| HUCKLEBERRY | A12 |      |        | Pace x Doc                  | 336 | 66   | 164 | 366 | 279 | 12        | 0.09   | 247      | 37       | 0.38  | 77    | G    | G     | 106          | 110         | 101        | 101  | 103  | 103        | 98              | 100      | 1         | 100       | 71    | -1.0              | -2.8                   |      |
| ILLUMINATOR | P   |      |        | A2P2 x Delta                | 644 | 69   | 448 | 707 | 367 | 11        | 0.45   | -467     | 41       | 0.88  | 79    | 1    | 1     | 112          | 112         | 102        | 101  | 105  | 132        | 104             | 103      | -1        | 101       | 98    | -3.1              | -2.6                   |      |
| IMPROVER    | A22 |      |        | Proven Full x Karat         | 738 | 65   | 673 | 886 | 280 | 14        | 0.23   | 73       | 31       | 0.40  | 76    | G    | G     | 109          | 110         | 101        | 103  | 104  | 144        | 106             | 109      | -3        | 99        | 68    | -2.0              | -2.0                   |      |
| JFROST      | A22 |      |        | Varley x Jeronimo           | 456 | 69   | 304 | 547 | 298 | 20        | 0.43   | -100     | 23       | 0.39  | 78    | G    | G     | 106          | 107         | 100        | 103  | 103  | 145        | 103             | 100      | -2        | 100       | 87    | -3.2              | -2.3                   |      |
| JOBOLO      | P   |      |        | Boti x Pemberton            | 654 | 67   | 446 | 905 | 340 | 22        | 0.44   | -39      | 28       | 0.43  | 79    | G    | G     | 114          | 107         | 103        | 103  | 104  | 147        | 107             | 98       | 3         | 101       | 93    | -1.7              | -3.0                   |      |
| JORDLIV     | A22 |      |        | Varley x Wippon             | 639 | 69   | 421 | 870 | 418 | 40        | 0.50   | 512      | 25       | 0.05  | 78    | G    | G     | 107          | 107         | 103        | 104  | 106  | 135        | 102             | 100      | 2         | 100       | 81    | 1.6               | -4.8                   |      |
| KEATON      | A22 |      |        | Rocknroll x River           | 688 | 69   | 598 | 768 | 249 | 18        | 0.24   | 188      | 22       | 0.20  | 78    | G    | G     | 104          | 107         | 101        | 101  | 104  | 152        | 109             | 108      | -1        | 100       | 70    | -3.3              | -2.7                   |      |
| LANGLEY     | PP  |      |        | Mdouglas x Nipit            | 329 | 65   | 199 | 349 | 191 | 21        | 0.08   | 335      | 21       | 0.09  | 77    | G    | G     | 102          | 107         | 102        | 102  | 102  | 124        | 102             | 101      | 0         | 100       | 70    | -2.1              | -3.2                   |      |
| LASTIN      | A12 |      |        | Fedora x Jett               | 430 | 87   | 306 | 542 | 246 | 24        | 0.34   | 239      | 13       | 0.05  | 97    | 284  | 39    | 108          | 107         | 103        | 101  | 104  | 119        | 99              | 103      | -1        | 100       | 98    | -2.7              | -5.3                   |      |
| LENN        | A22 |      |        | CFP-PP x Delta              | 505 | 71   | 323 | 630 | 353 | 17        | 0.34   | -35      | 38       | 0.56  | 80    | 20   | 2     | 110          | 112         | 104        | 101  | 104  | 108        | 98              | 100      | -4        | 102       | 97    | -3.4              | -4.6                   |      |
| LINIZE      | PP  |      |        | Nipit-PP x Luster-P         | 369 | 68   | 156 | 453 | 310 | 19        | 0.21   | 293      | 32       | 0.29  | 78    | G    | G     | 106          | 106         | 102        | 101  | 103  | 111        | 98              | 98       | 2         | 101       | 91    | -2.3              | -3.9                   |      |
| LOLLYMAN    | A12 |      |        | Candyman x Varley           | 721 | 65   | 564 | 880 | 434 | 27        | 0.52   | -23      | 38       | 0.57  | 76    | G    | G     | 108          | 112         | 102        | 101  | 103  | 134        | 102             | 106      | -2        | 100       | 69    | -2.7              | -3.6                   |      |
| LOWMAN      | PP  |      |        | Amen x Nipit                | 315 | 66   | 169 | 383 | 125 | 13        | -0.02  | 528      | 12       | -0.15 | 77    | G    | G     | 106          | 105         | 101        | 102  | 103  | 142        | 107             | 97       | 0         | 101       | 70    | -2.8              | -5.7                   |      |
| LUKIE       | A22 |      |        | Varley x Superdave          | 589 | 69   | 340 | 796 | 484 | 41        | 0.53   | 466      | 36       | 0.23  | 79    | G    | G     | 110          | 108         | 100        | 104  | 104  | 124        | 100             | 100      | 1         | 101       | 97    | -2.3              | -3.5                   |      |
| MADAGASCAR  | A22 |      |        | Australlind x AltaExquisite | 688 | 65   | 548 | 866 | 446 | 28        | 0.45   | 148      | 42       | 0.51  | 77    | G    | G     | 106          | 109         | 104        | 99   | 102  | 121        | 98              | 106      | -3        | 101       | 70    | -3.0              | -5.1                   |      |
| MAEBULL     | A22 |      |        | Palermo x Shottle           | 215 | 96   | 183 | 253 | 27  | 5         | 0.01   | 174      | 1        | -0.10 | 99    | 4958 | 316   | 106          | 102         | 100        | 100  | 102  | 149        | 103             | 102      | 2         | 100       | 99    | -1.5              | -2.1                   |      |
| MIDDOUGLAS  | PP  |      |        | Fono-P x Bight-P            | 454 | 67   | 341 | 501 | 224 | 10        | 0.13   | 120      | 27       | 0.32  | 77    | G    | G     | 102          | 108         | 104        | 100  | 102  | 126        | 105             | 103      | -1        | 99        | 84    | -1.0              | -2.2                   |      |
| MRRIGHT     | A22 |      |        | Almamater x Bandares        | 656 | 70   | 571 | 697 | 236 | 12        | 0.18   | 76       | 26       | 0.34  | 80    | 24   | 5     | 111          | 111         | 104        | 100  | 104  | 125        | 102             | 110      | -3        | 100       | 99    | 2.3               | -4.7                   |      |
| NORTHEAST   | A22 |      |        | Eastern x Karat             | 659 | 66   | 576 | 703 | 227 | 10        | 0.21   | -48      | 26       | 0.40  | 77    | G    | G     | 111          | 114         | 100        | 104  | 104  | 154        | 107             | 108      | -1        | 100       | 84    | -3.7              | -5.1                   |      |
| NOUGAT      | P   |      |        | Candyman x Boti             | 739 | 64   | 615 | 933 | 362 | 16        | 0.35   | -71      | 40       | 0.61  | 76    | G    | G     | 107          | 109         | 102        | 101  | 103  | 139        | 107             | 105      | -2        | 101       | 67    | -0.7              | -1.0                   |      |
| OLIVERTWIST | A12 |      |        | Powerhouse x Varley         | 574 | 68   | 485 | 680 | 220 | 27        | 0.29   | 430      | 8        | -0.15 | 78    | G    | G     | 111          | 112         | 101        | 104  | 105  | 150        | 105             | 106      | -2        | 101       | 70    | -2.5              | -4.7                   |      |
| OMG         | PP  |      |        | CFP x Jeronimo              | 470 | 67   | 321 | 554 | 322 | 8         | 0.47   | -634     | 36       | 0.91  | 75    | 11   | 2     | 105          | 103         | 103        | 100  | 101  | 116        | 101             | 102      | 2         | 101       | 95    | -2.5              | -5.9                   |      |
| PATSYD      | A22 |      |        | Varley x River              | 543 | 69   | 395 | 814 | 319 | 36        | 0.37   | 620      | 15       | -0.16 | 78    | G    | G     | 110          | 109         | 100        | 104  | 105  | 151        | 101             | 100      | 1         | 99        | 70    | -0.7              | -1.7                   |      |
| PILBARA     | A22 |      |        | Perseus x Powerball         | 474 | 89   | 414 | 628 | 276 | 34        | 0.42   | 450      | 8        | -0.17 | 98    | 397  | 59    | 99           | 108         | 101        | 101  | 103  | 132        | 101             | 105      | -1        | 101       | 99    | -1.7              | -3.8                   |      |
| POLLGARTH   | P   |      |        | Banjo x Birix               | 523 | 68   | 477 | 560 | 66  | 9         | 0.26   | -188     | -4       | 0.06  | 78    | G    | G     | 112          | 112         | 102        | 100  | 102  | 144        | 108             | 107      | 1         | 100       | 85    | -1.3              | -1.1                   |      |
| POLMAX      | P   |      |        | Fedora x Jeronimo           | 691 | 69   | 561 | 842 | 341 | 19        | 0.36   | -12      | 34       | 0.50  | 78    | G    | G     | 106          | 107         | 104        | 103  | 104  | 149        | 104             | 106      | 2         | 100       | 95    | -2.0              | -2.5                   |      |
| RIZBOY      | A12 |      |        | Manhattan x Montana         | 657 | 67   | 535 | 681 | 229 | 9         | 0.25   | -156     | 25       | 0.46  | 75    | 8    | 3     | 115          | 109         | 103        | 103  | 104  | 157        | 107             | 108      | -1        | 99        | 98    | -3.2              | -4.5                   |      |
| SHERIFF     | A22 |      |        | Boti-P x Almamater          | 652 | 67   | 592 | 680 | 135 | 7         | 0.21   | -156     | 12       | 0.26  | 78    | G    | G     | 109          | 110         | 105        | 102  | 104  | 154        | 107             | 109      | 4         | 101       | 78    | -3.9              | -5.6                   |      |
| SLHONDA     | P   |      |        | Solar x Lundy               | 446 | 63   | 469 | 422 | 116 | 12        | 0.19   | 78       | 5        | 0.02  | 77    | G    | G     | 104          | 104         | 101        | 103  | 102  | 123        | 103             | 113      | -1        | 101       | 61    | -2.7              | -1.4                   |      |
| SLICEMAN    | PP  |      |        | Solar x Jeronimo            | 539 | 64   | 415 | 632 | 319 | 19        | 0.32   | 60       | 31       | 0.41  | 77    | G    | G     | 103          | 107         | 101        | 101  | 101  | 126        | 104             | 105      | 1         | 101       | 74    | -5.0              | -4.6                   |      |
| TBOLT       | P   |      |        | Boti x Kardew               | 518 | 67   | 345 | 691 | 282 | 23        | 0.19   | 478      | 25       | 0.07  | 78    | G    | G     | 112          | 108         | 103        | 104  | 105  | 135        | 101             | 99       | -3        | 102       | 73    | -2.7              | -2.3                   |      |
| TIMAMBA     | A12 |      |        | Varley x Letsgo             | 576 | 69   | 401 | 766 | 334 | 27        | 0.46   | 124      | 22       | 0.25  | 79    | G    | G     | 111          | 107         | 102        | 104  | 106  | 133        | 103             | 101      | 2         | 101       | 97    | -3.7              | -0.7                   |      |
| TOMMYDEE    | A22 |      |        | EnoGame x Altime            | 623 | 87   | 570 | 751 | 245 | 17        | 0.31   | 24       | 20       | 0.27  | 98    | 358  | 37    | 107          | 108         | 102        | 103  | 101  | 126        | 103             | 109      | 1         | 101       | 96    | -0.9              | -5.0                   |      |
| TWITTER     | A22 |      |        | Hermes x Lambda             | 659 | 69   | 525 | 769 | 306 | 11        | 0.33   | -238     | 35       | 0.65  | 79    | 4    | 2     | 112          | 108         | 102        | 102  | 104  | 138        | 105             | 105      | -2        | 101       | 95    | -0.6              | -2.5                   |      |
| VARLEY      | A22 |      |        | Pemberton x Superhero       | 476 | 93   | 346 | 647 | 280 | 36        | 0.43   | 475      | 7        | -0.19 | 99    | 1417 | 121   | 107          | 108         | 99         | 104  | 105  | 128        | 102             | 103      | 3         | 100       | 99    | -1.2              | -1.9                   |      |
| ZEPHYR      | A22 |      |        | Decipher x AltaMagnifique   | 600 | 67   | 472 | 693 | 235 | 16        | 0.29   | 15       | 20       | 0.27  | 78    | G    | G     | 114          | 109         | 102        | 102  | 102  | 136        |                 |          |           |           |       |                   |                        |      |

# Holstein Australian Breeding Values / April 2026

| TYPE        | Bull Code | Over Type | Mamm Syst | Dairy Strength | Rump | Feet & Legs | Stature | Bone Quality | Angul | Muzzle Width | Body Depth | Chest Width | Pin Width | Pin Set | Loin Strength | Heel Depth | Rear Leg Set | Rear Leg Rear View | Udder Texture | Udder Depth | Fore Attach | Rear Udder Height | Rear Udder Width | Centre Lig | Teat Place Front | Teat Place Rear | Teat Length | Rel % | Survival | Heat Tol | Feed Saved |
|-------------|-----------|-----------|-----------|----------------|------|-------------|---------|--------------|-------|--------------|------------|-------------|-----------|---------|---------------|------------|--------------|--------------------|---------------|-------------|-------------|-------------------|------------------|------------|------------------|-----------------|-------------|-------|----------|----------|------------|
| ACDC        | 109       | 107       | 97        | 109            | 101  | 107         | 98      | 95           | 100   | 92           | 100        | 104         | 104       | 104     | 104           | 111        | 102          | 102                | 100           | 111         | 106         | 107               | 100              | 103        | 104              | 101             | 100         | 63    | 105      | 99       | -28        |
| AUSTEN      | 107       | 110       | 99        | 95             | 103  | 107         | 100     | 97           | 101   | 98           | 100        | 109         | 109       | 109     | 92            | 104        | 94           | 108                | 104           | 108         | 109         | 106               | 104              | 107        | 107              | 100             | 94          | 62    | 107      | 98       | 9          |
| AUSTRADER   | 104       | 103       | 97        | 102            | 106  | 103         | 99      | 90           | 100   | 94           | 104        | 104         | 102       | 102     | 99            | 109        | 97           | 101                | 95            | 108         | 105         | 109               | 98               | 99         | 98               | 94              | 99          | 61    | 110      | 101      | -3         |
| CIROCCO     | 111       | 107       | 103       | 107            | 101  | 107         | 97      | 98           | 101   | 101          | 102        | 104         | 105       | 105     | 106           | 102        | 101          | 100                | 103           | 107         | 104         | 106               | 104              | 106        | 102              | 101             | 101         | 64    | 107      | 98       | -129       |
| COINMAKER   | 108       | 108       | 101       | 101            | 105  | 105         | 91      | 95           | 103   | 99           | 108        | 105         | 105       | 98      | 98            | 106        | 95           | 101                | 99            | 107         | 106         | 105               | 103              | 106        | 106              | 102             | 102         | 64    | 105      | 95       | -127       |
| CONRAD      | 110       | 112       | 99        | 102            | 104  | 106         | 96      | 98           | 107   | 97           | 100        | 108         | 101       | 101     | 104           | 104        | 99           | 104                | 104           | 109         | 106         | 111               | 105              | 109        | 106              | 102             | 101         | 64    | 106      | 96       | -47        |
| DECIPHER    | 109       | 106       | 103       | 102            | 97   | 104         | 99      | 100          | 102   | 101          | 105        | 105         | 105       | 103     | 103           | 103        | 102          | 95                 | 101           | 110         | 108         | 105               | 100              | 105        | 99               | 100             | 106         | 105   | 103      | 103      | -26        |
| EASTERN     | 109       | 107       | 107       | 109            | 101  | 104         | 98      | 101          | 105   | 103          | 106        | 110         | 105       | 107     | 107           | 97         | 100          | 102                | 100           | 103         | 105         | 106               | 102              | 102        | 103              | 103             | 91          | 65    | 101      | 92       | -132       |
| ELEVENTHOUR | 105       | 108       | 102       | 96             | 101  | 106         | 103     | 99           | 103   | 99           | 103        | 107         | 103       | 107     | 93            | 103        | 103          | 103                | 97            | 105         | 106         | 107               | 108              | 102        | 103              | 104             | 100         | 60    | 108      | 95       | -149       |
| ELEPASO     | 107       | 109       | 101       | 102            | 102  | 104         | 99      | 96           | 106   | 99           | 103        | 103         | 100       | 100     | 100           | 101        | 100          | 103                | 96            | 105         | 106         | 102               | 104              | 102        | 113              | 109             | 60          | 107   | 103      | -107     |            |
| FENDER      | 106       | 108       | 95        | 102            | 108  | 103         | 98      | 92           | 99    | 95           | 99         | 100         | 100       | 100     | 96            | 106        | 92           | 107                | 99            | 112         | 108         | 108               | 98               | 104        | 108              | 106             | 93          | 66    | 105      | 95       | -33        |
| HEYHEY      | 104       | 104       | 99        | 97             | 95   | 108         | 101     | 97           | 101   | 95           | 99         | 101         | 93        | 101     | 100           | 102        | 103          | 98                 | 99            | 108         | 107         | 105               | 99               | 104        | 98               | 102             | 63          | 109   | 92       | -68      |            |
| HIGHROAD    | 109       | 107       | 100       | 106            | 98   | 107         | 100     | 99           | 101   | 96           | 97         | 107         | 105       | 103     | 103           | 100        | 99           | 95                 | 102           | 112         | 108         | 111               | 98               | 106        | 98               | 103             | 98          | 62    | 107      | 114      | -5         |
| HUCKLEBERRY | 106       | 110       | 103       | 99             | 104  | 113         | 101     | 98           | 102   | 101          | 106        | 107         | 107       | 99      | 103           | 103        | 108          | 108                | 103           | 107         | 106         | 108               | 104              | 106        | 106              | 103             | 92          | 62    | 102      | 102      | -186       |
| ILLUMINATOR | 112       | 112       | 105       | 105            | 102  | 106         | 104     | 105          | 104   | 102          | 100        | 103         | 105       | 105     | 105           | 102        | 101          | 107                | 103           | 108         | 108         | 110               | 110              | 108        | 102              | 102             | 99          | 65    | 102      | 99       | -130       |
| IMPROVER    | 109       | 110       | 101       | 102            | 101  | 108         | 102     | 100          | 109   | 96           | 98         | 101         | 100       | 100     | 100           | 102        | 109          | 102                | 102           | 106         | 105         | 108               | 105              | 102        | 108              | 105             | 105         | 61    | 108      | 94       | -15        |
| JFROST      | 106       | 107       | 105       | 105            | 99   | 110         | 89      | 101          | 105   | 102          | 105        | 109         | 104       | 105     | 98            | 104        | 100          | 101                | 100           | 104         | 103         | 106               | 103              | 104        | 105              | 103             | 102         | 66    | 101      | 90       | -110       |
| JOBOLT      | 114       | 107       | 103       | 108            | 106  | 103         | 102     | 97           | 102   | 100          | 104        | 107         | 106       | 108     | 108           | 102        | 97           | 108                | 99            | 106         | 103         | 105               | 104              | 102        | 108              | 100             | 95          | 64    | 105      | 97       | 33         |
| JORDLIV     | 107       | 107       | 104       | 108            | 102  | 109         | 99      | 101          | 103   | 100          | 102        | 115         | 104       | 106     | 106           | 96         | 94           | 105                | 101           | 107         | 101         | 106               | 105              | 106        | 104              | 104             | 101         | 65    | 105      | 89       | -128       |
| KEATON      | 104       | 107       | 98        | 101            | 101  | 105         | 98      | 93           | 104   | 97           | 101        | 107         | 107       | 99      | 99            | 103        | 98           | 100                | 99            | 111         | 107         | 106               | 99               | 105        | 106              | 104             | 91          | 66    | 107      | 101      | -108       |
| LASTIN      | 108       | 107       | 105       | 102            | 104  | 109         | 97      | 101          | 106   | 102          | 103        | 106         | 106       | 102     | 102           | 108        | 95           | 102                | 103           | 103         | 101         | 110               | 108              | 103        | 98               | 98              | 91          | 105   | 96       | -116     |            |
| LOLLYMAN    | 108       | 112       | 105       | 101            | 103  | 103         | 100     | 103          | 105   | 100          | 103        | 102         | 102       | 102     | 98            | 102        | 101          | 107                | 102           | 103         | 101         | 109               | 108              | 108        | 113              | 108             | 99          | 61    | 104      | 88       | -89        |
| LOWMAN      | 106       | 105       | 100       | 105            | 99   | 111         | 102     | 100          | 102   | 100          | 97         | 107         | 101       | 103     | 102           | 109        | 102          | 103                | 103           | 112         | 106         | 104               | 98               | 104        | 100              | 101             | 65          | 105   | 102      | -177     |            |
| LUKIE       | 110       | 108       | 105       | 104            | 101  | 113         | 97      | 105          | 104   | 101          | 100        | 107         | 101       | 104     | 98            | 99         | 102          | 106                | 105           | 101         | 100         | 105               | 106              | 105        | 108              | 102             | 107         | 66    | 101      | 87       | -144       |
| MADAGASCAR  | 106       | 109       | 102       | 99             | 104  | 104         | 107     | 99           | 103   | 100          | 103        | 107         | 98        | 95      | 108           | 108        | 98           | 101                | 102           | 103         | 106         | 110               | 108              | 105        | 99               | 100             | 98          | 61    | 105      | 94       | -84        |
| MAEBULL     | 106       | 102       | 103       | 103            | 98   | 101         | 93      | 102          | 99    | 102          | 102        | 102         | 101       | 102     | 101           | 97         | 104          | 102                | 102           | 103         | 107         | 102               | 100              | 99         | 95               | 94              | 100         | 99    | 102      | 106      | -10        |
| NORTHEAST   | 111       | 114       | 100       | 107            | 102  | 107         | 100     | 98           | 102   | 97           | 100        | 107         | 106       | 102     | 102           | 102        | 100          | 100                | 102           | 107         | 109         | 111               | 107              | 105        | 110              | 103             | 93          | 62    | 104      | 97       | -71        |
| NOUGAT      | 107       | 109       | 100       | 103            | 102  | 101         | 99      | 96           | 104   | 95           | 104        | 104         | 100       | 100     | 100           | 99         | 108          | 108                | 99            | 108         | 105         | 108               | 104              | 104        | 108              | 100             | 94          | 60    | 106      | 95       | 3          |
| OLIVERTWIST | 111       | 112       | 102       | 105            | 101  | 109         | 95      | 98           | 109   | 96           | 101        | 107         | 99        | 107     | 97            | 97         | 103          | 101                | 105           | 105         | 103         | 109               | 109              | 110        | 107              | 108             | 64          | 104   | 95       | -85      |            |
| OMG         | 105       | 103       | 102       | 110            | 96   | 103         | 95      | 99           | 102   | 102          | 102        | 102         | 101       | 108     | 93            | 110        | 100          | 98                 | 93            | 110         | 105         | 108               | 96               | 99         | 100              | 94              | 66          | 101   | 96       | -36      |            |
| PATSYD      | 110       | 109       | 104       | 101            | 99   | 102         | 98      | 104          | 101   | 102          | 100        | 105         | 106       | 101     | 99            | 102        | 102          | 101                | 107           | 100         | 103         | 105               | 108              | 107        | 103              | 114             | 66          | 105   | 92       | 38       |            |
| PILBARA     | 99        | 108       | 101       | 95             | 102  | 104         | 107     | 100          | 99    | 100          | 98         | 103         | 93        | 101     | 105           | 105        | 95           | 102                | 105           | 102         | 98          | 108               | 105              | 109        | 107              | 112             | 93          | 91    | 104      | 96       | -69        |
| POLLGARTH   | 112       | 112       | 100       | 103            | 100  | 102         | 102     | 98           | 98    | 98           | 98         | 98          | 104       | 100     | 99            | 100        | 100          | 102                | 101           | 113         | 109         | 119               | 101              | 106        | 100              | 99              | 64          | 106   | 104      | -24      |            |
| POLIMAX     | 106       | 107       | 100       | 105            | 99   | 107         | 99      | 102          | 98    | 97           | 95         | 105         | 105       | 100     | 100           | 98         | 99           | 101                | 105           | 107         | 105         | 106               | 105              | 104        | 101              | 100             | 94          | 66    | 106      | 92       | -57        |
| SLHONDA     | 104       | 104       | 100       | 103            | 101  | 108         | 101     | 98           | 100   | 97           | 100        | 104         | 103       | 101     | 102           | 95         | 101          | 104                | 104           | 106         | 100         | 101               | 104              | 106        | 100              | 103             | 95          | 61    | 104      | 106      | -118       |
| SLUCEMAN    | 103       | 107       | 99        | 101            | 96   | 103         | 100     | 99           | 102   | 96           | 100        | 100         | 96        | 99      | 100           | 102        | 100          | 102                | 102           | 109         | 104         | 108               | 105              | 104        | 102              | 106             | 95          | 62    | 103      | 99       | -112       |
| TBOLT       | 112       | 108       | 107       | 107            | 108  | 107         | 98      | 100          | 110   | 103          | 107        | 105         | 102       | 106     | 104           | 104        | 101          | 112                | 102           | 104         | 102         | 107               | 108              | 103        | 105              | 102             | 92          | 63    | 107      | 94       | -107       |
| TINAMBA     | 111       | 107       | 104       | 104            | 101  | 109         | 99      | 101          | 100   | 101          | 101        | 108         | 100       | 105     | 103           | 104        | 105          | 103                | 104           | 105         | 103         | 105               | 101              | 108        | 105              | 100             | 66          | 104   | 91       | -44      |            |
| ELVIN       | 105       | 110       | 100       | 96             | 103  | 104         | 106     | 97           | 99    | 98           | 97         | 103         | 94        | 94      | 106           | 106        | 97           | 103                | 104           | 107         | 105         | 110               | 105              | 105        | 106              | 101             | 97          | 61    | 105      | 98       | -61        |
| ENZO        | 107       | 108       | 99        | 103            | 100  | 113         | 103     | 98           | 100   | 96           | 98         | 108         | 98        | 104     | 104           | 102        | 99           | 97                 | 105           | 109         | 106         | 105               | 100              | 107        | 109              | 96              | 62          | 107   | 97       | -175     |            |
| LANGLEY     | 102       | 107       | 100       | 105            | 99   | 106         | 101     | 98           | 102   | 99           | 100        | 104         | 102       | 104     | 104           | 104        | 109          | 104                | 98            | 113         | 107         | 109               | 102              | 101        | 1020             | 108             | 95          | 62    | 103      | 99       | -193       |
| LENN        | 110       | 112       | 100       | 106            | 105  | 107         | 103     | 99           | 101   | 97           | 97         | 99          | 102       | 105     | 104           | 104        | 106          | 106                | 102           | 110         | 111         | 112               | 104              | 104        | 104              | 103             | 94          | 69    | 103      | 92       | -78        |
| LIONIZE     | 106       | 106       | 102       | 105            | 100  | 110         | 104     | 105          | 99    | 101          | 94         | 103         | 104       | 105     | 104           | 104        | 102          | 97                 | 105           | 110         | 107         | 109               | 99               | 104        | 100              | 100             | 65          | 103   | 96       | -199     |            |
| MIDDOUGLAS  | 102       | 108       | 99        | 101            | 98   | 104         | 98      | 96           | 104   | 98           | 102        | 103         | 100       | 99      | 104           | 102        | 102          | 95                 | 97            | 113         | 108         | 110               | 98               | 103        | 105              | 108             | 63          | 104   | 103      | -145     |            |
| MRRIGHT     | 111       | 111       | 100       | 105            | 105  | 104         | 101     | 96           | 101   | 97           | 104        | 103         | 106       | 103     | 105           | 104        | 101          | 104                | 102           | 112         | 108         | 110               | 103              | 104        | 109              | 105             | 64          | 107   | 100      | -133     |            |
| RIZBOY      | 115       | 109       | 101       | 105            | 104  | 109         | 101     | 100          | 98    | 99           | 98         | 109         | 99        | 99      | 104           | 104        | 96           | 100                | 103           | 112         | 112         | 107               | 100              | 103        | 106              | 100             | 65          | 105   | 96       | -130     |            |
| SHERIFF     | 109       | 110       | 99        | 109            | 104  | 107         | 106     | 98           | 100   | 97           | 99         | 107         | 109       | 106     | 106           | 103        | 103          | 103                | 99            | 111         | 105         | 110               | 106              | 104        | 106              | 100             | 62          | 108   | 101      | -95      |            |
| TOMMYDEE    | 107       | 108       | 100       | 103            | 103  | 101         | 101     | 94           | 103   | 98           | 104        | 100         | 103       | 103     | 103           | 102        | 100          | 102                | 101           | 105         | 10          |                   |                  |            |                  |                 |             |       |          |          |            |

# HOLSTEIN TRAIT LEADERS

| \$BPI      |     |      |
|------------|-----|------|
|            |     | Page |
| HEYHEY     | 820 | 13   |
| AUSTEN     | 798 | 7    |
| AUSTRADER  | 798 | 8    |
| ENZO       | 778 | 12   |
| NOUGAT     | 739 | 23   |
| IMPROVER   | 738 | 15   |
| ACDC       | 736 | 7    |
| FENDER     | 723 | 13   |
| LOLLYMAN   | 721 | 19   |
| POLMAX     | 691 | 26   |
| MADAGASCAR | 688 | 21   |
| CIROCCO    | 686 | 8    |
| KEATON     | 668 | 17   |
| NORTHEAST  | 659 | 22   |
| TWITTER    | 659 | 29   |

| HWI       |     |      |
|-----------|-----|------|
|           |     | Page |
| AUSTRADER | 776 | 8    |
| AUSTEN    | 713 | 7    |
| HEYHEY    | 712 | 13   |
| IMPROVER  | 673 | 15   |
| ENZO      | 672 | 12   |
| ACDC      | 637 | 7    |
| HIGHROAD  | 634 | 14   |
| NOUGAT    | 615 | 23   |
| FENDER    | 612 | 13   |
| KEATON    | 598 | 17   |
| SHERIFF   | 592 | 25   |
| CIROCCO   | 583 | 8    |
| NORTHEAST | 576 | 22   |
| MRRIGHT   | 571 | 22   |
| TOMMYDEE  | 570 | 29   |

| SI         |     |      |
|------------|-----|------|
|            |     | Page |
| HEYHEY     | 994 | 13   |
| AUSTEN     | 967 | 7    |
| AUSTRADER  | 949 | 8    |
| NOUGAT     | 933 | 23   |
| JOBOLT     | 905 | 16   |
| IMPROVER   | 886 | 15   |
| LOLLYMAN   | 880 | 19   |
| CONRAD     | 871 | 9    |
| JORDLIV    | 870 | 17   |
| MADAGASCAR | 866 | 21   |
| ACDC       | 864 | 7    |
| ENZO       | 855 | 12   |
| POLMAX     | 842 | 26   |
| FENDER     | 816 | 13   |
| PATSYD     | 814 | 24   |

| \$ASI       |     |      |
|-------------|-----|------|
|             |     | Page |
| LUKIE       | 484 | 19   |
| MADAGASCAR  | 446 | 21   |
| LOLLYMAN    | 434 | 19   |
| JORDLIV     | 418 | 17   |
| HEYHEY      | 407 | 13   |
| AUSTEN      | 405 | 7    |
| ILLUMINATOR | 367 | 15   |
| NOUGAT      | 362 | 23   |
| LENN        | 353 | 18   |
| POLMAX      | 341 | 26   |
| JOBOLT      | 340 | 16   |
| AUSTRADER   | 335 | 8    |
| FENDER      | 335 | 13   |
| TINAMBA     | 334 | 28   |
| ENZO        | 332 | 12   |

| Dairy Strength |     |      |
|----------------|-----|------|
|                |     | Page |
| EASTERN        | 107 | 10   |
| TBOLT          | 107 | 28   |
| ZEPHYR         | 106 | 30   |
| ILLUMINATOR    | 105 | 15   |
| JFROST         | 105 | 16   |
| LASTIN         | 105 | 18   |
| LOLLYMAN       | 105 | 19   |
| LUKIE          | 105 | 19   |
| JORDLIV        | 104 | 17   |
| PATSYD         | 104 | 24   |
| TINAMBA        | 104 | 28   |
| VARLEY         | 104 | 30   |
| CIROCCO        | 103 | 8    |
| DECIPHER       | 103 | 10   |
| HUCKLEBERRY    | 103 | 14   |

| Daughter Fertility |     |      |
|--------------------|-----|------|
|                    |     | Page |
| AUSTRADER          | 114 | 8    |
| HIGHROAD           | 114 | 14   |
| SLHONDA            | 113 | 27   |
| AUSTEN             | 111 | 7    |
| ENZO               | 110 | 12   |
| MRRIGHT            | 110 | 22   |
| EASTERN            | 109 | 10   |
| IMPROVER           | 109 | 15   |
| TOMMYDEE           | 109 | 29   |
| SHERIFF            | 109 | 25   |
| HEYHEY             | 108 | 13   |
| CIROCCO            | 108 | 8    |
| KEATON             | 108 | 17   |
| RIZBOY             | 108 | 26   |
| NORTHEAST          | 108 | 22   |

| Overall Type |     |      |
|--------------|-----|------|
|              |     | Page |
| RIZBOY       | 115 | 26   |
| ZEPHYR       | 114 | 30   |
| JOBOLT       | 114 | 16   |
| TBOLT        | 112 | 28   |
| ILLUMINATOR  | 112 | 15   |
| TWITTER      | 112 | 29   |
| POLLGARTH    | 112 | 25   |
| TINAMBA      | 111 | 28   |
| CIROCCO      | 111 | 8    |
| OLIVERTWIST  | 111 | 23   |
| NORTHEAST    | 111 | 22   |
| MRRIGHT      | 111 | 22   |
| LUKIE        | 110 | 19   |
| PATSYD       | 110 | 24   |
| LENN         | 110 | 18   |

| Mammary System |     |      |
|----------------|-----|------|
|                |     | Page |
| NORTHEAST      | 114 | 22   |
| ILLUMINATOR    | 112 | 15   |
| POLLGARTH      | 112 | 25   |
| OLIVERTWIST    | 112 | 23   |
| LENN           | 112 | 18   |
| CONRAD         | 112 | 9    |
| LOLLYMAN       | 112 | 19   |
| MRRIGHT        | 111 | 22   |
| IMPROVER       | 110 | 15   |
| SHERIFF        | 110 | 25   |
| AUSTEN         | 110 | 7    |
| HUCKLEBERRY    | 110 | 14   |
| ELVIN          | 110 | 12   |
| RIZBOY         | 109 | 26   |
| ZEPHYR         | 109 | 30   |

| Mastitis Resistance |     |      |
|---------------------|-----|------|
|                     |     | Page |
| ACDC                | 110 | 7    |
| KEATON              | 109 | 17   |
| DECIPHER            | 109 | 10   |
| HIGHROAD            | 108 | 14   |
| ENZO                | 108 | 12   |
| POLLGARTH           | 108 | 25   |
| SHERIFF             | 107 | 25   |
| HEYHEY              | 107 | 13   |
| RIZBOY              | 107 | 26   |
| NORTHEAST           | 107 | 22   |
| NOUGAT              | 107 | 23   |
| CONRAD              | 107 | 9    |
| JOBOLT              | 107 | 16   |
| LOWMAN              | 107 | 20   |
| IMPROVER            | 106 | 15   |

| Calving Ease |     |      |
|--------------|-----|------|
|              |     | Page |
| TBOLT        | 102 | 28   |
| ELEVENTHOUR  | 102 | 11   |
| EASTERN      | 102 | 10   |
| LENN         | 102 | 18   |
| SHERIFF      | 101 | 25   |
| NOUGAT       | 101 | 23   |
| CONRAD       | 101 | 9    |
| JOBOLT       | 101 | 16   |
| LOWMAN       | 101 | 20   |
| OLIVERTWIST  | 101 | 23   |
| TWITTER      | 101 | 29   |
| AUSTRADER    | 101 | 8    |
| SLICEMAN     | 101 | 27   |
| ILLUMINATOR  | 101 | 15   |
| SLHONDA      | 101 | 27   |

| Gestation Length |    |      |
|------------------|----|------|
|                  |    | Page |
| EASTERN          | -6 | 10   |
| ELPASO           | -6 | 11   |
| HEYHEY           | -5 | 13   |
| LENN             | -4 | 18   |
| AUSTRADER        | -4 | 8    |
| TBOLT            | -3 | 28   |
| ELEVENTHOUR      | -3 | 11   |
| MADAGASCAR       | -3 | 21   |
| MRRIGHT          | -3 | 22   |
| IMPROVER         | -3 | 15   |
| NOUGAT           | -2 | 23   |
| OLIVERTWIST      | -2 | 23   |
| TWITTER          | -2 | 28   |
| AUSTEN           | -2 | 7    |
| COINMAKER        | -2 | 9    |

| POLLED      |    |      |
|-------------|----|------|
|             |    | Page |
| MDOUGLAS    | PP | 21   |
| LOWMAN      | PP | 20   |
| SLICEMAN    | PP | 27   |
| OMG         | PP | 24   |
| LIONIZE     | PP | 20   |
| LANGLEY     | PP | 20   |
| LENN        | P  | 28   |
| TBOLT       | P  | 28   |
| NOUGAT      | P  | 23   |
| ILLUMINATOR | P  | 15   |
| SLHONDA     | P  | 27   |
| CIROCCO     | P  | 8    |
| POLLGARTH   | P  | 25   |
| POLMAX      | P  | 26   |
| JOBOLT      | P  | 16   |

# ACDC

Powerhouse x Magicball

## Carenda ACDC

**Bull ID:** ACDC **Sire:** Progenesis Powerhouse  
**Nasis:** 12FFYE6 **Dam:** Carenda Magicball Viska

**Herdbook:** 2309670  
**Breeder:** Carenda Holsteins, Boyanup, WA

**Haplotype:** HH1F HH2F HH3F HH4F HH5F HH6F  
**Casein:** A22 BB  
**Genetic Code:** MWF

|                |                |                |                |
|----------------|----------------|----------------|----------------|
| <b>\$BPI</b>   | <b>HWI</b>     | <b>SI</b>      | <b>ASI</b>     |
| <b>736/68%</b> | <b>637/64%</b> | <b>864/65%</b> | <b>283/78%</b> |



- Exciting New Release bull that ticks all the boxes
- Offers a well balanced ABVs across the board
- Top 1% of the breed for \$BPI, HWI and SI.

| ABV 04/26  |            |              |          | G dtrs G herds RIP G% |          |
|------------|------------|--------------|----------|-----------------------|----------|
| Protein kg | 17 /78%    | Milk Speed   | 103 /69% | Cell Count            | 160 /69% |
| Protein %  | 0.41% /78% | Temp         | 102 /69% | Mastitis Res          | 110 /58% |
| Milk L     | -192 /78%  | Survival     | 105 /60% | Daughter Fert         | 107 /65% |
| Fat kg     | 24 /78%    | Calving Ease | 100 /71% | Feed Saved            | -28 /43% |
| Fat %      | 0.46% /78% | Gest Length  | 0 /69%   | Heat Tol              | 99 /48%  |

| ABV Type Composite 04/26 |  |  |  | G dtrs G herds Rel 63% |     |
|--------------------------|--|--|--|------------------------|-----|
| Overall Type             |  |  |  |                        | 109 |
| Mammary Sytem            |  |  |  |                        | 107 |
| Feet & Legs              |  |  |  |                        | 101 |
| Dairy Strength           |  |  |  |                        | 97  |
| Rump                     |  |  |  |                        | 109 |

| Type 04/26   |      |                    |       | G dtrs G herds Rel 63% |       |
|--------------|------|--------------------|-------|------------------------|-------|
| Stature      | 107  | Pin Set            | 104 H | Fore Attach            | 106   |
| Bone Quality | 98 C | Loin Strength      | 104   | Rear Udder Height      | 107   |
| Angularity   | 95   | Heel Depth         | 97    | Rear Udder Width       | 100   |
| Muzzle Width | 100  | Rear Leg Set       | 101 C | Centre Ligament        | 103   |
| Body Depth   | 92   | Rear Leg Rear View | 102   | Teat Place Front       | 104 O |
| Chest Width  | 100  | Udder Texture      | 100   | Teat Place Rear        | 101 C |
| Pin Width    | 104  | Udder Depth        | 111 S | Teat Length            | 100   |

# AUSTEN

Australind x Wimbleton

## Emu Banks Austen

**Bull ID:** AUSTEN **Sire:** Carenda Australind  
**Nasis:** 12FFXK2 **Dam:** Emu Banks Wimbleton Sonnett VG85

**Herdbook:** 2286449  
**Breeder:** Emu Banks Holsteins, Terang, VIC

**Haplotype:** HH1F HH2F HH3F HH4F HH5F HH6F  
**Casein:** A22 AB  
**Genetic Code:** MWF

|                |                |                |                |
|----------------|----------------|----------------|----------------|
| <b>\$BPI</b>   | <b>HWI</b>     | <b>SI</b>      | <b>ASI</b>     |
| <b>798/65%</b> | <b>713/61%</b> | <b>967/63%</b> | <b>405/77%</b> |



- Bred by the Number 1 BPI herd Emu Banks Holsteins
- Top 1% of the breed for \$BPI, HWI, SI and ASI
- Will improve Daughter Fertility & udders

| ABV 04/26  |            |              |          | G dtrs G herds RIP G% |          |
|------------|------------|--------------|----------|-----------------------|----------|
| Protein kg | 18 /77%    | Milk Speed   | 102 /67% | Cell Count            | 124 /66% |
| Protein %  | 0.46% /77% | Temp         | 101 /67% | Mastitis Res          | 103 /50% |
| Milk L     | -242 /77%  | Survival     | 107 /57% | Daughter Fert         | 111 /58% |
| Fat kg     | 42 /77%    | Calving Ease | 101 /70% | Feed Saved            | 9 /42%   |
| Fat %      | 0.76% /77% | Gest Length  | -2 /69%  | Heat Tol              | 98 /48%  |

| ABV Type Composite 04/26 |  |  |  | G dtrs G herds Rel 62% |     |
|--------------------------|--|--|--|------------------------|-----|
| Overall Type             |  |  |  |                        | 107 |
| Mammary Sytem            |  |  |  |                        | 110 |
| Feet & Legs              |  |  |  |                        | 103 |
| Dairy Strength           |  |  |  |                        | 99  |
| Rump                     |  |  |  |                        | 95  |

| Type 04/26   |       |                    |       | G dtrs G herds Rel 62% |       |
|--------------|-------|--------------------|-------|------------------------|-------|
| Stature      | 107   | Pin Set            | 93 H  | Fore Attach            | 109   |
| Bone Quality | 100 C | Loin Strength      | 92    | Rear Udder Height      | 106   |
| Angularity   | 97    | Heel Depth         | 104   | Rear Udder Width       | 104   |
| Muzzle Width | 101   | Rear Leg Set       | 94 S  | Centre Ligament        | 107   |
| Body Depth   | 98    | Rear Leg Rear View | 108   | Teat Place Front       | 107 O |
| Chest Width  | 100   | Udder Texture      | 104   | Teat Place Rear        | 105 C |
| Pin Width    | 109   | Udder Depth        | 108 S | Teat Length            | 94    |

# AUSTRADER Australind x AltaExquisite

## Summit View Austrader-IMP-ET

**Bull ID:** AUSTRADER **Sire:** Carenda Australind **Herdbook:** 2309811 **Haplotype:** HH1F HH2F HH3F HH4F HH5F HH6F **Casein:** A22 AA  
**Nasis:** 12FFYE9 **Dam:** Peak Maude **Breeder:** Genetics Australia, Camperdown, VIC **Genetic Code:** MWF

|                |                |                |                |
|----------------|----------------|----------------|----------------|
| <b>\$BPI</b>   | <b>HWI</b>     | <b>SI</b>      | <b>ASI</b>     |
| <b>798/65%</b> | <b>776/60%</b> | <b>949/62%</b> | <b>335/77%</b> |



- Bred from the best Australian and US bloodlines
- Improves Daughter Fertility, and health traits
- Can be used for Calving Ease and offers shorter Gestation Length

| ABV 04/26  |            |              |          | G dtrs        | G herds | RIP  | G% |
|------------|------------|--------------|----------|---------------|---------|------|----|
| Protein kg | 14 /77%    | Milk Speed   | 101 /67% | Cell Count    | 129     | /66% |    |
| Protein %  | 0.45% /77% | Temp         | 101 /67% | Mastitis Res  | 104     | /50% |    |
| Milk L     | -360 /77%  | Survival     | 110 /56% | Daughter Fert | 114     | /57% |    |
| Fat kg     | 34 /77%    | Calving Ease | 101 /70% | Feed Saved    | -3      | /42% |    |
| Fat %      | 0.71% /77% | Gest Length  | -4 /68%  | Heat Tol      | 101     | /48% |    |

| ABV Type Composite 04/26 |  |  |  | G dtrs | G herds | Rel | 61% |
|--------------------------|--|--|--|--------|---------|-----|-----|
| Overall Type             |  |  |  |        |         |     | 104 |
| Mammary Sytem            |  |  |  |        |         |     | 103 |
| Feet & Legs              |  |  |  |        |         |     | 106 |
| Dairy Strength           |  |  |  |        |         |     | 97  |
| Rump                     |  |  |  |        |         |     | 102 |

| Type 04/26   |      |                    |       | G dtrs            | G herds | Rel | 61% |
|--------------|------|--------------------|-------|-------------------|---------|-----|-----|
| Stature      | 103  | Pin Set            | 102 H | Fore Attach       | 105     |     |     |
| Bone Quality | 99 C | Loin Strength      | 99    | Rear Udder Height | 109     |     |     |
| Angularity   | 90   | Heel Depth         | 109   | Rear Udder Width  | 98      |     |     |
| Muzzle Width | 100  | Rear Leg Set       | 97 O  | Centre Ligament   | 99      |     |     |
| Body Depth   | 94   | Rear Leg Rear View | 101   | Teat Place Front  | 98 W    |     |     |
| Chest Width  | 104  | Udder Texture      | 95    | Teat Place Rear   | 94 C    |     |     |
| Pin Width    | 104  | Udder Depth        | 108 S | Teat Length       | 99      |     |     |

# CIROCCO P Cirrus x River

## Carenda Cirocco

**Bull ID:** CIROCCO P **Sire:** Winstar Perfect Cirrus-P **Herdbook:** 2282187 **Haplotype:** HH1F HH2F HH3F HH4F HH5F HH6F **Casein:** A22  
**Nasis:** 12FFXK9 **Dam:** Carenda River Verle VG86 **Breeder:** Carenda Holsteins, Boyanup, WA **Genetic Code:** POC MWF

|                |                |                |                |
|----------------|----------------|----------------|----------------|
| <b>\$BPI</b>   | <b>HWI</b>     | <b>SI</b>      | <b>ASI</b>     |
| <b>686/67%</b> | <b>583/63%</b> | <b>790/65%</b> | <b>261/78%</b> |



- Exciting New Release that ticks all the boxes
- Heterozygous polled with increased Milk yield and Fat kgs
- Flawless conformation with strength, in high demand

| ABV 04/26  |            |              |          | G dtrs        | G herds | RIP  | G% |
|------------|------------|--------------|----------|---------------|---------|------|----|
| Protein kg | 17 /78%    | Milk Speed   | 101 /69% | Cell Count    | 151     | /67% |    |
| Protein %  | 0.05% /78% | Temp         | 102 /69% | Mastitis Res  | 106     | /56% |    |
| Milk L     | 538 /78%   | Survival     | 107 /61% | Daughter Fert | 108     | /63% |    |
| Fat kg     | 30 /78%    | Calving Ease | 100 /71% | Feed Saved    | -129    | /43% |    |
| Fat %      | 0.10% /78% | Gest Length  | 0 /68%   | Heat Tol      | 98      | /48% |    |

| ABV Type Composite 04/26 |  |  |  | G dtrs | G herds | Rel | 64% |
|--------------------------|--|--|--|--------|---------|-----|-----|
| Overall Type             |  |  |  |        |         |     | 111 |
| Mammary Sytem            |  |  |  |        |         |     | 107 |
| Feet & Legs              |  |  |  |        |         |     | 101 |
| Dairy Strength           |  |  |  |        |         |     | 103 |
| Rump                     |  |  |  |        |         |     | 107 |

| Type 04/26   |      |                    |       | G dtrs            | G herds | Rel | 64% |
|--------------|------|--------------------|-------|-------------------|---------|-----|-----|
| Stature      | 107  | Pin Set            | 105 H | Fore Attach       | 104     |     |     |
| Bone Quality | 97 C | Loin Strength      | 106   | Rear Udder Height | 106     |     |     |
| Angularity   | 98   | Heel Depth         | 102   | Rear Udder Width  | 104     |     |     |
| Muzzle Width | 101  | Rear Leg Set       | 101 C | Centre Ligament   | 106     |     |     |
| Body Depth   | 101  | Rear Leg Rear View | 100   | Teat Place Front  | 102 O   |     |     |
| Chest Width  | 102  | Udder Texture      | 103   | Teat Place Rear   | 106 C   |     |     |
| Pin Width    | 104  | Udder Depth        | 107 S | Teat Length       | 101     |     |     |

# COINMAKER Rocknroll x Kenobi

## Gleestar Coin Maker

**Bull ID:** COINMAKER **Sire:** Westcoast Rocknroll  
**Nasis:** 05FFV25 **Dam:** Gleestar Kenobi Cutie 318 VG88

**Herdbook:** 2217775  
**Breeder:** Gleestar Holsteins, Illowa, VIC

**Haplotype:** HH1F HH2F HH3F HH4F HH5F HH6F **Casein:** A22 BB  
**Genetic Code:**

|                |                |                |                |
|----------------|----------------|----------------|----------------|
| <b>\$BPI</b>   | <b>HWI</b>     | <b>SI</b>      | <b>ASI</b>     |
| <b>562/68%</b> | <b>473/65%</b> | <b>616/65%</b> | <b>249/78%</b> |



- Popular bull, one of Australia's highest selling Holsteins
- Daughters are mainly black, improves health traits
- Easy to use, offers a 'no holes' type ABV

| ABV 04/26  |                   |              |                 | G dtrs G herds RIP G% |                  |  |
|------------|-------------------|--------------|-----------------|-----------------------|------------------|--|
| Protein kg | <b>14</b> /78%    | Milk Speed   | <b>100</b> /70% | Cell Count            | <b>144</b> /69%  |  |
| Protein %  | <b>0.27%</b> /78% | Temp         | <b>100</b> /70% | Mastitis Res          | <b>103</b> /60%  |  |
| Milk L     | <b>-9</b> /78%    | Survival     | <b>105</b> /63% | Daughter Fert         | <b>107</b> /64%  |  |
| Fat kg     | <b>24</b> /78%    | Calving Ease | <b>100</b> /99% | Feed Saved            | <b>-127</b> /43% |  |
| Fat %      | <b>0.36%</b> /78% | Gest Length  | <b>-2</b> /99%  | Heat Tol              | <b>95</b> /48%   |  |

| ABV Type Composite 04/26 |  |  |  | G dtrs G herds Rel 64% |  |            |
|--------------------------|--|--|--|------------------------|--|------------|
| Overall Type             |  |  |  |                        |  | <b>108</b> |
| Mammary Sytem            |  |  |  |                        |  | <b>108</b> |
| Feet & Legs              |  |  |  |                        |  | <b>105</b> |
| Dairy Strength           |  |  |  |                        |  | <b>101</b> |
| Rump                     |  |  |  |                        |  | <b>101</b> |

| Type 04/26   |             |                    |              | G dtrs G herds Rel 64% |              |  |
|--------------|-------------|--------------------|--------------|------------------------|--------------|--|
| Stature      | <b>105</b>  | Pin Set            | <b>99 H</b>  | Fore Attach            | <b>106</b>   |  |
| Bone Quality | <b>91 C</b> | Loin Strength      | <b>98</b>    | Rear Udder Height      | <b>105</b>   |  |
| Angularity   | <b>95</b>   | Heel Depth         | <b>106</b>   | Rear Udder Width       | <b>103</b>   |  |
| Muzzle Width | <b>103</b>  | Rear Leg Set       | <b>95 0</b>  | Centre Ligament        | <b>106</b>   |  |
| Body Depth   | <b>99</b>   | Rear Leg Rear View | <b>101</b>   | Teat Place Front       | <b>106 0</b> |  |
| Chest Width  | <b>108</b>  | Udder Texture      | <b>99</b>    | Teat Place Rear        | <b>102 C</b> |  |
| Pin Width    | <b>105</b>  | Udder Depth        | <b>107 S</b> | Teat Length            | <b>102</b>   |  |

# CONRAD Yolo x Bolti

## Wilara Conrad-ET

**Bull ID:** CONRAD **Sire:** BGP Yolo ET  
**Nasis:** 12FFXK6 **Dam:** Wilara Bolti Connie GP83

**Herdbook:** 2289632  
**Breeder:** Wilara Holsteins, Tinamba, VIC

**Haplotype:** HH1F HH2F HH3F HH4F HH5F HH6F **Casein:** A12 AB  
**Genetic Code:** MWF

|                |                |                |                |
|----------------|----------------|----------------|----------------|
| <b>\$BPI</b>   | <b>HWI</b>     | <b>SI</b>      | <b>ASI</b>     |
| <b>655/67%</b> | <b>467/63%</b> | <b>871/65%</b> | <b>326/78%</b> |



- New release sire offering high production – top 1% SI
- Use to improve Health Traits
- Offers improvements to Overall Type and Mammary Systems

| ABV 04/26  |                   |              |                 | G dtrs G herds RIP G% |                 |  |
|------------|-------------------|--------------|-----------------|-----------------------|-----------------|--|
| Protein kg | <b>25</b> /78%    | Milk Speed   | <b>104</b> /69% | Cell Count            | <b>140</b> /67% |  |
| Protein %  | <b>0.17%</b> /78% | Temp         | <b>100</b> /69% | Mastitis Res          | <b>107</b> /56% |  |
| Milk L     | <b>577</b> /78%   | Survival     | <b>106</b> /61% | Daughter Fert         | <b>100</b> /62% |  |
| Fat kg     | <b>32</b> /78%    | Calving Ease | <b>101</b> /70% | Feed Saved            | <b>-47</b> /43% |  |
| Fat %      | <b>0.11%</b> /78% | Gest Length  | <b>2</b> /68%   | Heat Tol              | <b>96</b> /48%  |  |

| ABV Type Composite 04/26 |  |  |  | G dtrs G herds Rel 64% |  |            |
|--------------------------|--|--|--|------------------------|--|------------|
| Overall Type             |  |  |  |                        |  | <b>110</b> |
| Mammary Sytem            |  |  |  |                        |  | <b>112</b> |
| Feet & Legs              |  |  |  |                        |  | <b>104</b> |
| Dairy Strength           |  |  |  |                        |  | <b>99</b>  |
| Rump                     |  |  |  |                        |  | <b>102</b> |

| Type 04/26   |             |                    |              | G dtrs G herds Rel 64% |              |  |
|--------------|-------------|--------------------|--------------|------------------------|--------------|--|
| Stature      | <b>106</b>  | Pin Set            | <b>101 H</b> | Fore Attach            | <b>106</b>   |  |
| Bone Quality | <b>96 C</b> | Loin Strength      | <b>101</b>   | Rear Udder Height      | <b>111</b>   |  |
| Angularity   | <b>98</b>   | Heel Depth         | <b>104</b>   | Rear Udder Width       | <b>105</b>   |  |
| Muzzle Width | <b>107</b>  | Rear Leg Set       | <b>99 C</b>  | Centre Ligament        | <b>109</b>   |  |
| Body Depth   | <b>97</b>   | Rear Leg Rear View | <b>104</b>   | Teat Place Front       | <b>106 0</b> |  |
| Chest Width  | <b>100</b>  | Udder Texture      | <b>104</b>   | Teat Place Rear        | <b>109 C</b> |  |
| Pin Width    | <b>108</b>  | Udder Depth        | <b>109 S</b> | Teat Length            | <b>97</b>    |  |

# DECIPHER Letsgo x Wrangler

|                |                |                |                |
|----------------|----------------|----------------|----------------|
| <b>\$BPI</b>   | <b>HWI</b>     | <b>SI</b>      | <b>ASI</b>     |
| <b>434/89%</b> | <b>352/84%</b> | <b>533/86%</b> | <b>101/98%</b> |

## Calister Decipher

**Bull ID:** DECIPHER **Sire:** Vogue Letsgo **Herdbook:** 2144476 **Haplotype:** HH1F HH2F HH3F HH4F HH5F HH6F **Casein:** A22 AB  
**Nasis:** 12FFUK6 **Dam:** Calister Wrangler Devonna VG85 **Breeder:** Calister Holsteins, Calivil, VIC **Genetic Code:** MWF



| ABV 04/26     |                    | 553 dtrs 52 herds RIP 55% |                 |
|---------------|--------------------|---------------------------|-----------------|
| Protein kg    | <b>15</b> /98%     | Milk Speed                | <b>102</b> /94% |
| Protein %     | <b>0.15%</b> /98%  | Temp                      | <b>102</b> /94% |
| Milk L        | <b>243</b> /98%    | Survival                  | <b>105</b> /87% |
| Fat kg        | <b>1</b> /98%      | Calving Ease              | <b>100</b> /99% |
| Fat %         | <b>-0.13%</b> /98% | Gest Length               | <b>4</b> /99%   |
| Cell Count    | <b>139</b> /94%    | Mastitis Res              | <b>109</b> /73% |
| Daughter Fert | <b>103</b> /75%    | Feed Saved                | <b>-26</b> /60% |
| Heat Tol      | <b>103</b> /48%    |                           |                 |

| ABV Type Composite 04/26 |  | 220 dtrs 22 herds Rel 95% |            |
|--------------------------|--|---------------------------|------------|
| Overall Type             |  |                           | <b>109</b> |
| Mammary Sytem            |  |                           | <b>106</b> |
| Feet & Legs              |  |                           | <b>97</b>  |
| Dairy Strength           |  |                           | <b>103</b> |
| Rump                     |  |                           | <b>102</b> |

| Type 04/26       |             | 225 dtrs 22 herds Rel 95% |              |
|------------------|-------------|---------------------------|--------------|
| Stature          | <b>104</b>  | Pin Set                   | <b>97 H</b>  |
| Bone Quality     | <b>99 C</b> | Loin Strength             | <b>103</b>   |
| Angularity       | <b>100</b>  | Heel Depth                | <b>103</b>   |
| Muzzle Width     | <b>102</b>  | Rear Leg Set              | <b>102 C</b> |
| Body Depth       | <b>101</b>  | Rear Leg Rear View        | <b>95</b>    |
| Chest Width      | <b>101</b>  | Udder Texture             | <b>101</b>   |
| Pin Width        | <b>105</b>  | Udder Depth               | <b>110 S</b> |
| Fore Attach      | <b>108</b>  | Rear Udder Height         | <b>105</b>   |
| Rear Udder Width | <b>100</b>  | Centre Ligament           | <b>105</b>   |
| Teat Place Front | <b>99 W</b> | Teat Place Rear           | <b>100 C</b> |
| Teat Length      | <b>106</b>  |                           |              |

- Daughter Proven reliability with farmer friendly workability traits
- Snug udders with longer teats and improved udder health are a feature
- Sire of sons bound to make a lasting impression

# EASTERN Hermes x Superdave

|                |                |                |                |
|----------------|----------------|----------------|----------------|
| <b>\$BPI</b>   | <b>HWI</b>     | <b>SI</b>      | <b>ASI</b>     |
| <b>545/71%</b> | <b>461/67%</b> | <b>573/68%</b> | <b>312/83%</b> |

## Eastern Star Lockeddown

**Bull ID:** EASTERN **Sire:** Peak Hermes **Herdbook:** 2177582 **Haplotype:** HH1F HH2F HH3F HH4F HH5F HH6F **Casein:** A22 BB  
**Nasis:** 12FFUR7 **Dam:** Eastern Star Superdave Loretto GP84 **Breeder:** Eastern Star Holsteins, Tinamba, VIC **Genetic Code:** MWF



| ABV 04/26     |                   | 57 dtrs 11 herds RIP 49% |                  |
|---------------|-------------------|--------------------------|------------------|
| Protein kg    | <b>16</b> /83%    | Milk Speed               | <b>99</b> /70%   |
| Protein %     | <b>0.25%</b> /83% | Temp                     | <b>103</b> /70%  |
| Milk L        | <b>78</b> /83%    | Survival                 | <b>101</b> /61%  |
| Fat kg        | <b>34</b> /83%    | Calving Ease             | <b>102</b> /97%  |
| Fat %         | <b>0.45%</b> /83% | Gest Length              | <b>-6</b> /99%   |
| Cell Count    | <b>141</b> /65%   | Mastitis Res             | <b>98</b> /65%   |
| Daughter Fert | <b>109</b> /62%   | Feed Saved               | <b>-132</b> /44% |
| Heat Tol      | <b>92</b> /48%    |                          |                  |

| ABV Type Composite 04/26 |  | 15 dtrs 2 herds Rel 65% |            |
|--------------------------|--|-------------------------|------------|
| Overall Type             |  |                         | <b>109</b> |
| Mammary Sytem            |  |                         | <b>107</b> |
| Feet & Legs              |  |                         | <b>101</b> |
| Dairy Strength           |  |                         | <b>107</b> |
| Rump                     |  |                         | <b>109</b> |

| Type 04/26       |              | 2 dtrs 2 herds Rel 65% |              |
|------------------|--------------|------------------------|--------------|
| Stature          | <b>104</b>   | Pin Set                | <b>105 H</b> |
| Bone Quality     | <b>98 C</b>  | Loin Strength          | <b>107</b>   |
| Angularity       | <b>101</b>   | Heel Depth             | <b>97</b>    |
| Muzzle Width     | <b>105</b>   | Rear Leg Set           | <b>100 C</b> |
| Body Depth       | <b>103</b>   | Rear Leg Rear View     | <b>102</b>   |
| Chest Width      | <b>106</b>   | Udder Texture          | <b>100</b>   |
| Pin Width        | <b>110</b>   | Udder Depth            | <b>103 O</b> |
| Fore Attach      | <b>105</b>   | Rear Udder Height      | <b>106</b>   |
| Rear Udder Width | <b>106</b>   | Centre Ligament        | <b>102</b>   |
| Teat Place Front | <b>103 O</b> | Teat Place Rear        | <b>103 C</b> |
| Teat Length      | <b>91</b>    |                        |              |

- Ideal to use over maiden heifers for Calving Ease at 97% reliable
- Offers shorter Gestation Length with 99% reliability
- Use to add Dairy Strength

# ELEVENTHOUR *Excitement x Captivating*

|                |                |                |                |
|----------------|----------------|----------------|----------------|
| <b>\$BPI</b>   | <b>HWI</b>     | <b>SI</b>      | <b>ASI</b>     |
| <b>470/65%</b> | <b>327/60%</b> | <b>567/62%</b> | <b>269/76%</b> |

## Summit View Eleventhour

**Bull ID:** ELEVENTHOUR **Sire:** Peak Excitement-ET **Herdbook:** 2300789 **Haplotype:** HH1F HH2F HH3F HH4F HH5F HH6F **Casein:** A22  
**Nasis:** 12FFYE4 **Dam:** Summit View Captivating Elegance ET GP83 **Breeder:** Genetics Australia, Camperdown, VIC **Genetic Code:** MWF



| ABV 04/26  |                   |              | G dtrs          | G herds       | RIP              | G% |
|------------|-------------------|--------------|-----------------|---------------|------------------|----|
| Protein kg | <b>10</b> /76%    | Milk Speed   | <b>104</b> /67% | Cell Count    | <b>129</b> /66%  |    |
| Protein %  | <b>0.20%</b> /76% | Temp         | <b>102</b> /67% | Mastitis Res  | <b>100</b> /50%  |    |
| Milk L     | <b>-33</b> /76%   | Survival     | <b>108</b> /56% | Daughter Fert | <b>100</b> /57%  |    |
| Fat kg     | <b>33</b> /76%    | Calving Ease | <b>102</b> /68% | Feed Saved    | <b>-149</b> /41% |    |
| Fat %      | <b>0.50%</b> /76% | Gest Length  | <b>-3</b> /67%  | Heat Tol      | <b>95</b> /48%   |    |

| ABV Type Composite 04/26 |  |  | G dtrs | G herds | Rel | 60%        |
|--------------------------|--|--|--------|---------|-----|------------|
| Overall Type             |  |  |        |         |     | <b>105</b> |
| Mammary Sytem            |  |  |        |         |     | <b>108</b> |
| Feet & Legs              |  |  |        |         |     | <b>101</b> |
| Dairy Strength           |  |  |        |         |     | <b>102</b> |
| Rump                     |  |  |        |         |     | <b>96</b>  |

| Type 04/26   |             |                    | G dtrs      | G herds           | Rel         | 60% |
|--------------|-------------|--------------------|-------------|-------------------|-------------|-----|
| Stature      | <b>106</b>  | Pin Set            | <b>93H</b>  | Fore Attach       | <b>106</b>  |     |
| Bone Quality | <b>1030</b> | Loin Strength      | <b>95</b>   | Rear Udder Height | <b>107</b>  |     |
| Angularity   | <b>99</b>   | Heel Depth         | <b>103</b>  | Rear Udder Width  | <b>108</b>  |     |
| Muzzle Width | <b>103</b>  | Rear Leg Set       | <b>970</b>  | Centre Ligament   | <b>102</b>  |     |
| Body Depth   | <b>99</b>   | Rear Leg Rear View | <b>103</b>  | Teat Place Front  | <b>1030</b> |     |
| Chest Width  | <b>103</b>  | Udder Texture      | <b>97</b>   | Teat Place Rear   | <b>104C</b> |     |
| Pin Width    | <b>107</b>  | Udder Depth        | <b>1050</b> | Teat Length       | <b>100</b>  |     |

- New Holstein offering a well balanced ABV
- Use for Calving Ease, 102 and -3 for Gestation Length
- Improves mammary

# ELPASO *Excitement x Einstein*

|                |                |                |                |
|----------------|----------------|----------------|----------------|
| <b>\$BPI</b>   | <b>HWI</b>     | <b>SI</b>      | <b>ASI</b>     |
| <b>580/65%</b> | <b>516/61%</b> | <b>649/62%</b> | <b>228/77%</b> |

## Summit View Elpaso-ET

**Bull ID:** ELPASO **Sire:** Peak Excitement-ET **Herdbook:** 2288802 **Haplotype:** HH1F HH2F HH3F HH4F HH5F HH6F **Casein:** A12 BB  
**Nasis:** 12FFXL1 **Dam:** TLG Einstien Eve-IMP-ETGP84 **Breeder:** Genetics Australia, Camperdown, VIC **Genetic Code:** MWF



| ABV 04/26  |                   |              | G dtrs          | G herds       | RIP              | G% |
|------------|-------------------|--------------|-----------------|---------------|------------------|----|
| Protein kg | <b>12</b> /77%    | Milk Speed   | <b>102</b> /66% | Cell Count    | <b>147</b> /66%  |    |
| Protein %  | <b>0.22%</b> /77% | Temp         | <b>101</b> /66% | Mastitis Res  | <b>104</b> /52%  |    |
| Milk L     | <b>1</b> /77%     | Survival     | <b>107</b> /56% | Daughter Fert | <b>107</b> /58%  |    |
| Fat kg     | <b>24</b> /77%    | Calving Ease | <b>100</b> /68% | Feed Saved    | <b>-107</b> /41% |    |
| Fat %      | <b>0.34%</b> /77% | Gest Length  | <b>-6</b> /66%  | Heat Tol      | <b>103</b> /48%  |    |

| ABV Type Composite 04/26 |  |  | G dtrs | G herds | Rel | 60%        |
|--------------------------|--|--|--------|---------|-----|------------|
| Overall Type             |  |  |        |         |     | <b>107</b> |
| Mammary Sytem            |  |  |        |         |     | <b>109</b> |
| Feet & Legs              |  |  |        |         |     | <b>102</b> |
| Dairy Strength           |  |  |        |         |     | <b>101</b> |
| Rump                     |  |  |        |         |     | <b>102</b> |

| Type 04/26   |             |                    | G dtrs       | G herds           | Rel          | 60% |
|--------------|-------------|--------------------|--------------|-------------------|--------------|-----|
| Stature      | <b>104</b>  | Pin Set            | <b>100 H</b> | Fore Attach       | <b>106</b>   |     |
| Bone Quality | <b>99 C</b> | Loin Strength      | <b>100</b>   | Rear Udder Height | <b>106</b>   |     |
| Angularity   | <b>96</b>   | Heel Depth         | <b>101</b>   | Rear Udder Width  | <b>102</b>   |     |
| Muzzle Width | <b>106</b>  | Rear Leg Set       | <b>100 C</b> | Centre Ligament   | <b>104</b>   |     |
| Body Depth   | <b>99</b>   | Rear Leg Rear View | <b>103</b>   | Teat Place Front  | <b>113 C</b> |     |
| Chest Width  | <b>103</b>  | Udder Texture      | <b>96</b>    | Teat Place Rear   | <b>109 C</b> |     |
| Pin Width    | <b>103</b>  | Udder Depth        | <b>105 0</b> | Teat Length       | <b>98</b>    |     |

- Health Traits specialist with improved Heat Tolerance and Daughter Fertility
- Powerful cows with added width from head to tail
- Early release Excitement son from the acclaimed Einstein Eve

# ELVIN Excitement x Porche

|                |                |                |                |
|----------------|----------------|----------------|----------------|
| <b>\$BPI</b>   | <b>HWI</b>     | <b>SI</b>      | <b>ASI</b>     |
| <b>418/65%</b> | <b>259/60%</b> | <b>522/62%</b> | <b>244/76%</b> |

## Summit View Elvin

**Bull ID:** TLGELVIN **Sire:** Peak Excitement-ET **Herdbook:** AUS2288808 **Haplotype:** HH1F HH2F HH3F HH4F HH5F HH6F **Casein:** A22  
**Nasis:** 05FFX24 **Dam:** Emu Banks Porsche Embrace ET GP82 **Breeder:** Genetics Australia, Camperdown, VIC **Genetic Code:** MWF



- Australian standing son of Excitement
- Will lift Fat Kgs and Fat %
- Use to also improve mammary, particularly rear udders

| ABV 04/26  |                   |              |                 | G dtrs G herds RIP G% |                 |
|------------|-------------------|--------------|-----------------|-----------------------|-----------------|
| Protein kg | <b>2</b> /76%     | Milk Speed   | <b>102</b> /67% | Cell Count            | <b>131</b> /66% |
| Protein %  | <b>0.16%</b> /76% | Temp         | <b>103</b> /67% | Mastitis Res          | <b>103</b> /50% |
| Milk L     | <b>-227</b> /76%  | Survival     | <b>105</b> /55% | Daughter Fert         | <b>97</b> /56%  |
| Fat kg     | <b>36</b> /76%    | Calving Ease | <b>100</b> /69% | Feed Saved            | <b>-61</b> /42% |
| Fat %      | <b>0.66%</b> /76% | Gest Length  | <b>-1</b> /67%  | Heat Tol              | <b>98</b> /48%  |

| ABV Type Composite 04/26 |  |  |  | G dtrs G herds Rel 61% |            |
|--------------------------|--|--|--|------------------------|------------|
| Overall Type             |  |  |  |                        | <b>105</b> |
| Mammary Sytem            |  |  |  |                        | <b>110</b> |
| Feet & Legs              |  |  |  |                        | <b>103</b> |
| Dairy Strength           |  |  |  |                        | <b>100</b> |
| Rump                     |  |  |  |                        | <b>96</b>  |

| Type 04/26   |              |                    |              | G dtrs G herds Rel 61% |              |
|--------------|--------------|--------------------|--------------|------------------------|--------------|
| Stature      | <b>104</b>   | Pin Set            | <b>94 H</b>  | Fore Attach            | <b>105</b>   |
| Bone Quality | <b>106 S</b> | Loin Strength      | <b>94</b>    | Rear Udder Height      | <b>110</b>   |
| Angularity   | <b>97</b>    | Heel Depth         | <b>106</b>   | Rear Udder Width       | <b>105</b>   |
| Muzzle Width | <b>99</b>    | Rear Leg Set       | <b>97 O</b>  | Centre Ligament        | <b>105</b>   |
| Body Depth   | <b>98</b>    | Rear Leg Rear View | <b>103</b>   | Teat Place Front       | <b>106 O</b> |
| Chest Width  | <b>97</b>    | Udder Texture      | <b>104</b>   | Teat Place Rear        | <b>101 C</b> |
| Pin Width    | <b>103</b>   | Udder Depth        | <b>107 S</b> | Teat Length            | <b>97</b>    |

# ENZO Dropbox x Einstein

|                |                |                |                |
|----------------|----------------|----------------|----------------|
| <b>\$BPI</b>   | <b>HWI</b>     | <b>SI</b>      | <b>ASI</b>     |
| <b>778/67%</b> | <b>672/63%</b> | <b>855/64%</b> | <b>332/78%</b> |

## Summit View Enzo

**Bull ID:** TLGENZO **Sire:** Kings-Ransom Dropbox-ET **Herdbook:** AUS2238370 **Haplotype:** HH1F HH2F HH3F HH4F HH5F HH6F **Casein:** A22 BB  
**Nasis:** 05FFW28 **Dam:** TLG Einstein Eve GP84 **Breeder:** Genetics Australia, Camperdown, VIC **Genetic Code:** MWF



- Top 1% \$BPI, HWI & SI
- High production & Health Traits Specialist
- Improves Mastitis Resistance & Daughter Fertility

| ABV 04/26  |                   |              |                 | G dtrs G herds RIP G% |                  |
|------------|-------------------|--------------|-----------------|-----------------------|------------------|
| Protein kg | <b>20</b> /78%    | Milk Speed   | <b>100</b> /68% | Cell Count            | <b>163</b> /68%  |
| Protein %  | <b>0.31%</b> /78% | Temp         | <b>103</b> /68% | Mastitis Res          | <b>108</b> /57%  |
| Milk L     | <b>126</b> /78%   | Survival     | <b>107</b> /60% | Daughter Fert         | <b>110</b> /61%  |
| Fat kg     | <b>33</b> /78%    | Calving Ease | <b>100</b> /89% | Feed Saved            | <b>-175</b> /42% |
| Fat %      | <b>0.39%</b> /78% | Gest Length  | <b>-1</b> /94%  | Heat Tol              | <b>97</b> /48%   |

| ABV Type Composite 04/26 |  |  |  | G dtrs G herds Rel 62% |            |
|--------------------------|--|--|--|------------------------|------------|
| Overall Type             |  |  |  |                        | <b>107</b> |
| Mammary Sytem            |  |  |  |                        | <b>108</b> |
| Feet & Legs              |  |  |  |                        | <b>100</b> |
| Dairy Strength           |  |  |  |                        | <b>99</b>  |
| Rump                     |  |  |  |                        | <b>103</b> |

| Type 04/26   |              |                    |              | G dtrs G herds Rel 62% |              |
|--------------|--------------|--------------------|--------------|------------------------|--------------|
| Stature      | <b>113</b>   | Pin Set            | <b>98 H</b>  | Fore Attach            | <b>106</b>   |
| Bone Quality | <b>103 O</b> | Loin Strength      | <b>104</b>   | Rear Udder Height      | <b>105</b>   |
| Angularity   | <b>98</b>    | Heel Depth         | <b>102</b>   | Rear Udder Width       | <b>100</b>   |
| Muzzle Width | <b>100</b>   | Rear Leg Set       | <b>99 C</b>  | Centre Ligament        | <b>107</b>   |
| Body Depth   | <b>96</b>    | Rear Leg Rear View | <b>97</b>    | Teat Place Front       | <b>109 O</b> |
| Chest Width  | <b>98</b>    | Udder Texture      | <b>105</b>   | Teat Place Rear        | <b>108 C</b> |
| Pin Width    | <b>108</b>   | Udder Depth        | <b>109 S</b> | Teat Length            | <b>96</b>    |

# FENDER Rocknroll x Bandares

|                |                |                |                |
|----------------|----------------|----------------|----------------|
| <b>\$BPI</b>   | <b>HWI</b>     | <b>SI</b>      | <b>ASI</b>     |
| <b>723/69%</b> | <b>612/66%</b> | <b>816/66%</b> | <b>335/78%</b> |

## Winaview Fender

**Bull ID:** FENDER    **Sire:** Westcoast Rocknroll    **Herdbook:** 2200347    **Haplotype:** HH1F HH2F HH3F HH4F HH5F HH6F    **Casein:** A22 BB  
**Nasis:** 12FFVR4    **Dam:** Vala Bandares Loca-IMP-ET VG86    **Breeder:** Winaview Holsteins, Warragul, VIC    **Genetic Code:** MWF



| ABV 04/26  |                   |              |                 | G dtrs G herds RIP G% |                 |
|------------|-------------------|--------------|-----------------|-----------------------|-----------------|
| Protein kg | <b>2</b> /78%     | Milk Speed   | <b>103</b> /70% | Cell Count            | <b>149</b> /69% |
| Protein %  | <b>0.26%</b> /78% | Temp         | <b>100</b> /70% | Mastitis Res          | <b>105</b> /64% |
| Milk L     | <b>-436</b> /78%  | Survival     | <b>105</b> /64% | Daughter Fert         | <b>107</b> /64% |
| Fat kg     | <b>50</b> /78%    | Calving Ease | <b>100</b> /89% | Feed Saved            | <b>-33</b> /44% |
| Fat %      | <b>0.98%</b> /78% | Gest Length  | <b>-1</b> /94%  | Heat Tol              | <b>95</b> /48%  |

| ABV Type Composite 04/26 |  |  |  | G dtrs G herds Rel 66% |            |
|--------------------------|--|--|--|------------------------|------------|
| Overall Type             |  |  |  |                        | <b>106</b> |
| Mammary Sytem            |  |  |  |                        | <b>108</b> |
| Feet & Legs              |  |  |  |                        | <b>108</b> |
| Dairy Strength           |  |  |  |                        | <b>95</b>  |
| Rump                     |  |  |  |                        | <b>102</b> |

| Type 04/26   |             |                    |              | G dtrs G herds Rel 66% |              |
|--------------|-------------|--------------------|--------------|------------------------|--------------|
| Stature      | <b>103</b>  | Pin Set            | <b>100 H</b> | Fore Attach            | <b>108</b>   |
| Bone Quality | <b>98 C</b> | Loin Strength      | <b>96</b>    | Rear Udder Height      | <b>108</b>   |
| Angularity   | <b>92</b>   | Heel Depth         | <b>106</b>   | Rear Udder Width       | <b>98</b>    |
| Muzzle Width | <b>99</b>   | Rear Leg Set       | <b>92 S</b>  | Centre Ligament        | <b>104</b>   |
| Body Depth   | <b>95</b>   | Rear Leg Rear View | <b>107</b>   | Teat Place Front       | <b>108 O</b> |
| Chest Width  | <b>99</b>   | Udder Texture      | <b>99</b>    | Teat Place Rear        | <b>106 C</b> |
| Pin Width    | <b>100</b>  | Udder Depth        | <b>112 S</b> | Teat Length            | <b>93</b>    |

- Profitable cows from the world class Laurie Sheik cow family
- The complete package offering elite management & fertility traits
- Extreme Fat yield and Fat % improver

# HEYHEY Hayk x Altaflashback

|                |                |                |                |
|----------------|----------------|----------------|----------------|
| <b>\$BPI</b>   | <b>HWI</b>     | <b>SI</b>      | <b>ASI</b>     |
| <b>820/66%</b> | <b>712/62%</b> | <b>994/64%</b> | <b>407/76%</b> |

## Carenda Heyhey

**Bull ID:** HEYHEY    **Sire:** Welcome-Tel Taos Hayk-ET    **Herdbook:** 2287827    **Haplotype:** HH1F HH2F HH3F HH4F HH5F HH6F    **Casein:** A12  
**Nasis:** 12FFXK7    **Dam:** Carenda Flashback Valerie VG85    **Breeder:** Carenda Holsteins, Boyanup, WA    **Genetic Code:** MWF



| ABV 04/26  |                   |              |                 | G dtrs G herds RIP G% |                 |
|------------|-------------------|--------------|-----------------|-----------------------|-----------------|
| Protein kg | <b>14</b> /76%    | Milk Speed   | <b>102</b> /67% | Cell Count            | <b>160</b> /66% |
| Protein %  | <b>0.41%</b> /76% | Temp         | <b>101</b> /67% | Mastitis Res          | <b>107</b> /55% |
| Milk L     | <b>-271</b> /76%  | Survival     | <b>109</b> /60% | Daughter Fert         | <b>108</b> /61% |
| Fat kg     | <b>48</b> /76%    | Calving Ease | <b>99</b> /71%  | Feed Saved            | <b>-68</b> /43% |
| Fat %      | <b>0.85%</b> /76% | Gest Length  | <b>-5</b> /68%  | Heat Tol              | <b>92</b> /48%  |

| ABV Type Composite 04/26 |  |  |  | G dtrs G herds Rel 63% |            |
|--------------------------|--|--|--|------------------------|------------|
| Overall Type             |  |  |  |                        | <b>104</b> |
| Mammary Sytem            |  |  |  |                        | <b>104</b> |
| Feet & Legs              |  |  |  |                        | <b>95</b>  |
| Dairy Strength           |  |  |  |                        | <b>99</b>  |
| Rump                     |  |  |  |                        | <b>97</b>  |

| Type 04/26   |              |                    |              | G dtrs G herds Rel 63% |              |
|--------------|--------------|--------------------|--------------|------------------------|--------------|
| Stature      | <b>108</b>   | Pin Set            | <b>93 H</b>  | Fore Attach            | <b>107</b>   |
| Bone Quality | <b>101 C</b> | Loin Strength      | <b>100</b>   | Rear Udder Height      | <b>105</b>   |
| Angularity   | <b>97</b>    | Heel Depth         | <b>102</b>   | Rear Udder Width       | <b>99</b>    |
| Muzzle Width | <b>101</b>   | Rear Leg Set       | <b>103 C</b> | Centre Ligament        | <b>104</b>   |
| Body Depth   | <b>95</b>    | Rear Leg Rear View | <b>98</b>    | Teat Place Front       | <b>98 W</b>  |
| Chest Width  | <b>99</b>    | Udder Texture      | <b>99</b>    | Teat Place Rear        | <b>102 C</b> |
| Pin Width    | <b>101</b>   | Udder Depth        | <b>108 S</b> | Teat Length            | <b>101</b>   |

- The highest \$BPI sire in this catalogue – top 1% \$BPI, HWI, & SI
- Offers high components, improved Daughter Fertility & longevity
- Mammary systems are snug and well attached

# HIGHROAD

Pollgarth x Lundy

## Summit View Highroad-ET

**Bull ID:** HIGHROAD **Sire:** Meadridge Hen Alice Pollgarth P  
**Nasis:** 12FFYE7 **Dam:** Wiltina Lundy Honey

**Herdbook:** 2305925  
**Breeder:** Genetics Australia, Camperdown, VIC

**Haplotype:** HH1F HH2F HH3F HH4F HH5F HH6F  
**Casein:** A22 AB  
**Genetic Code:** MWF

|                |                |                |               |
|----------------|----------------|----------------|---------------|
| <b>\$BPI</b>   | <b>HWI</b>     | <b>SI</b>      | <b>ASI</b>    |
| <b>602/65%</b> | <b>634/61%</b> | <b>624/63%</b> | <b>75/77%</b> |



- Exciting new health traits specialist, in top 1% for HWI
- First choice to reduce heat stress, top 1% for Heat Tolerance ABV at 114.
- Will improve mammary attachments and centre ligament

| ABV 04/26  |                   |              |                 | G dtrs G herds RIP G% |                 |
|------------|-------------------|--------------|-----------------|-----------------------|-----------------|
| Protein kg | <b>6</b> /77%     | Milk Speed   | <b>101</b> /66% | Cell Count            | <b>140</b> /66% |
| Protein %  | <b>0.22%</b> /77% | Temp         | <b>101</b> /66% | Mastitis Res          | <b>108</b> /49% |
| Milk L     | <b>-206</b> /77%  | Survival     | <b>107</b> /56% | Daughter Fert         | <b>114</b> /56% |
| Fat kg     | <b>1</b> /77%     | Calving Ease | <b>100</b> /68% | Feed Saved            | <b>-5</b> /42%  |
| Fat %      | <b>0.14%</b> /77% | Gest Length  | <b>1</b> /69%   | Heat Tol              | <b>114</b> /48% |

| ABV Type Composite 04/26 |  |  |  | G dtrs G herds Rel 62% |            |
|--------------------------|--|--|--|------------------------|------------|
| Overall Type             |  |  |  |                        | <b>109</b> |
| Mammary Sytem            |  |  |  |                        | <b>107</b> |
| Feet & Legs              |  |  |  |                        | <b>98</b>  |
| Dairy Strength           |  |  |  |                        | <b>100</b> |
| Rump                     |  |  |  |                        | <b>106</b> |

| Type 04/26   |              |                    |              | G dtrs G herds Rel 62% |              |
|--------------|--------------|--------------------|--------------|------------------------|--------------|
| Stature      | <b>107</b>   | Pin Set            | <b>105 H</b> | Fore Attach            | <b>108</b>   |
| Bone Quality | <b>100 C</b> | Loin Strength      | <b>103</b>   | Rear Udder Height      | <b>111</b>   |
| Angularity   | <b>99</b>    | Heel Depth         | <b>100</b>   | Rear Udder Width       | <b>98</b>    |
| Muzzle Width | <b>101</b>   | Rear Leg Set       | <b>99 C</b>  | Centre Ligament        | <b>106</b>   |
| Body Depth   | <b>96</b>    | Rear Leg Rear View | <b>95</b>    | Teat Place Front       | <b>98 W</b>  |
| Chest Width  | <b>97</b>    | Udder Texture      | <b>102</b>   | Teat Place Rear        | <b>103 C</b> |
| Pin Width    | <b>107</b>   | Udder Depth        | <b>112 S</b> | Teat Length            | <b>98</b>    |

# HUCKLEBERRY

Pace x Doc

## View Fort Huckleberry

**Bull ID:** HUCKLEBERRY **Sire:** Siemers Cway Pace 36945-ET  
**Nasis:** 05FFX25 **Dam:** Eclipse Doc Halina II Imp EX-90-1E

**Herdbook:** AUS2299827  
**Breeder:** View Forte Holsteins, Dixie, VIC

**Haplotype:** HH1F HH2F HH3F HH4F HH5F HH6F  
**Casein:** A12  
**Genetic Code:** MWF

|                |                |                |                |
|----------------|----------------|----------------|----------------|
| <b>\$BPI</b>   | <b>HWI</b>     | <b>SI</b>      | <b>ASI</b>     |
| <b>336/66%</b> | <b>164/62%</b> | <b>366/63%</b> | <b>279/77%</b> |



- Stylish new bull offering +milk, components and type
- Daughters will be taller than average and have picture perfect udders
- Ideal for higher input confined milking systems

| ABV 04/26  |                   |              |                 | G dtrs G herds RIP G% |                  |
|------------|-------------------|--------------|-----------------|-----------------------|------------------|
| Protein kg | <b>12</b> /77%    | Milk Speed   | <b>101</b> /67% | Cell Count            | <b>103</b> /67%  |
| Protein %  | <b>0.09%</b> /77% | Temp         | <b>101</b> /67% | Mastitis Res          | <b>98</b> /53%   |
| Milk L     | <b>247</b> /77%   | Survival     | <b>102</b> /58% | Daughter Fert         | <b>100</b> /59%  |
| Fat kg     | <b>37</b> /77%    | Calving Ease | <b>100</b> /71% | Feed Saved            | <b>-186</b> /42% |
| Fat %      | <b>0.38%</b> /77% | Gest Length  | <b>1</b> /69%   | Heat Tol              | <b>102</b> /48%  |

| ABV Type Composite 04/26 |  |  |  | G dtrs G herds Rel 62% |            |
|--------------------------|--|--|--|------------------------|------------|
| Overall Type             |  |  |  |                        | <b>106</b> |
| Mammary Sytem            |  |  |  |                        | <b>110</b> |
| Feet & Legs              |  |  |  |                        | <b>104</b> |
| Dairy Strength           |  |  |  |                        | <b>103</b> |
| Rump                     |  |  |  |                        | <b>99</b>  |

| Type 04/26   |              |                    |              | G dtrs G herds Rel 62% |              |
|--------------|--------------|--------------------|--------------|------------------------|--------------|
| Stature      | <b>113</b>   | Pin Set            | <b>97 H</b>  | Fore Attach            | <b>106</b>   |
| Bone Quality | <b>101 C</b> | Loin Strength      | <b>99</b>    | Rear Udder Height      | <b>108</b>   |
| Angularity   | <b>98</b>    | Heel Depth         | <b>103</b>   | Rear Udder Width       | <b>104</b>   |
| Muzzle Width | <b>102</b>   | Rear Leg Set       | <b>99 C</b>  | Centre Ligament        | <b>106</b>   |
| Body Depth   | <b>101</b>   | Rear Leg Rear View | <b>108</b>   | Teat Place Front       | <b>106 O</b> |
| Chest Width  | <b>106</b>   | Udder Texture      | <b>103</b>   | Teat Place Rear        | <b>106 C</b> |
| Pin Width    | <b>107</b>   | Udder Depth        | <b>107 S</b> | Teat Length            | <b>92</b>    |

# ILLUMINATOR A2P2 x Delta

|                |                |                |                |
|----------------|----------------|----------------|----------------|
| <b>\$BPI</b>   | <b>HWI</b>     | <b>SI</b>      | <b>ASI</b>     |
| <b>644/69%</b> | <b>448/66%</b> | <b>707/66%</b> | <b>367/79%</b> |

## Numeralla A2P2 Illuminator P-ET

**Bull ID:** ILLUMINATOR **Sire:** Vogue A2P2 **Herdbook:** 2198606 **Haplotype:** HH1F HH2F HH3F HH4F HH5F HH6F **Casein:** A22 BB  
**Nasis:** 12FFVR2 **Dam:** Numeralla Delta 1427 VG85 **Breeder:** Numeralla Dairy Company, Grassmere, VIC **Genetic Code:** POC MWF



- Balanced proof and an easy bull to add to any breeding program
- Ideal option for improved Dairy Strength, strong Rumps and snug Udders
- Extreme Fat and Protein % improver

| ABV 04/26  |            | 1 dtrs 1 herds RIP 100% |           |
|------------|------------|-------------------------|-----------|
| Protein kg | 11 /79%    | Milk Speed              | 102 /70%  |
| Protein %  | 0.45% /79% | Temp                    | 101 /70%  |
| Milk L     | -467 /79%  | Survival                | 102 /64%  |
| Fat kg     | 41 /79%    | Calving Ease            | 101 /98%  |
| Fat %      | 0.88% /79% | Gest Length             | -1 /99%   |
|            |            | Cell Count              | 132 /70%  |
|            |            | Mastitis Res            | 104 /58%  |
|            |            | Daughter Fert           | 103 /65%  |
|            |            | Feed Saved              | -130 /44% |
|            |            | Heat Tol                | 99 /48%   |

| ABV Type Composite 04/26 |  | G dtrs G herds Rel 65% |     |
|--------------------------|--|------------------------|-----|
| Overall Type             |  |                        | 112 |
| Mammary Sytem            |  |                        | 112 |
| Feet & Legs              |  |                        | 102 |
| Dairy Strength           |  |                        | 105 |
| Rump                     |  |                        | 105 |

| Type 04/26   |       | G dtrs G herds Rel 65% |       |
|--------------|-------|------------------------|-------|
| Stature      | 106   | Pin Set                | 105 H |
| Bone Quality | 104 O | Loin Strength          | 105   |
| Angularity   | 105   | Heel Depth             | 102   |
| Muzzle Width | 104   | Rear Leg Set           | 101 C |
| Body Depth   | 102   | Rear Leg Rear View     | 107   |
| Chest Width  | 100   | Udder Texture          | 103   |
| Pin Width    | 103   | Udder Depth            | 108 S |
|              |       | Fore Attach            | 108   |
|              |       | Rear Udder Height      | 110   |
|              |       | Rear Udder Width       | 110   |
|              |       | Centre Ligament        | 108   |
|              |       | Teat Place Front       | 102 O |
|              |       | Teat Place Rear        | 106 C |
|              |       | Teat Length            | 99    |

# IMPROVER Proven Full x Karat

|                |                |                |                |
|----------------|----------------|----------------|----------------|
| <b>\$BPI</b>   | <b>HWI</b>     | <b>SI</b>      | <b>ASI</b>     |
| <b>738/65%</b> | <b>673/61%</b> | <b>886/62%</b> | <b>280/76%</b> |

## Emu Banks Improver

**Bull ID:** IMPROVER **Sire:** S-S-I Hayk Proven Full **Herdbook:** 2306313 **Haplotype:** HH1F HH2F HH3F HH4F HH5F HH6F **Casein:** A22  
**Nasis:** 12FFYF2 **Dam:** Emu Banks Karat Tiffany **Breeder:** Emu Banks Holsteins, Terang, VIC **Genetic Code:** MWF



- From Emu Banks Holsteins, the # 1 BPI, HWI & SI herd
- Exciting new bull ranks in the top 1% \$BPI, HWI & SI
- Expect type and mammary improvement, will lengthen teats 105

| ABV 04/26  |            | G dtrs G herds RIP G% |          |
|------------|------------|-----------------------|----------|
| Protein kg | 14 /76%    | Milk Speed            | 101 /67% |
| Protein %  | 0.23% /76% | Temp                  | 103 /67% |
| Milk L     | 73 /76%    | Survival              | 108 /57% |
| Fat kg     | 31 /76%    | Calving Ease          | 99 /68%  |
| Fat %      | 0.40% /76% | Gest Length           | -3 /65%  |
|            |            | Cell Count            | 144 /65% |
|            |            | Mastitis Res          | 106 /50% |
|            |            | Daughter Fert         | 109 /58% |
|            |            | Feed Saved            | -15 /42% |
|            |            | Heat Tol              | 94 /48%  |

| ABV Type Composite 04/26 |  | G dtrs G herds Rel 61% |     |
|--------------------------|--|------------------------|-----|
| Overall Type             |  |                        | 109 |
| Mammary Sytem            |  |                        | 110 |
| Feet & Legs              |  |                        | 101 |
| Dairy Strength           |  |                        | 101 |
| Rump                     |  |                        | 102 |

| Type 04/26   |       | G dtrs G herds Rel 61% |       |
|--------------|-------|------------------------|-------|
| Stature      | 108   | Pin Set                | 100 H |
| Bone Quality | 102 O | Loin Strength          | 102   |
| Angularity   | 100   | Heel Depth             | 109   |
| Muzzle Width | 109   | Rear Leg Set           | 102 C |
| Body Depth   | 96    | Rear Leg Rear View     | 99    |
| Chest Width  | 98    | Udder Texture          | 102   |
| Pin Width    | 101   | Udder Depth            | 106 S |
|              |       | Fore Attach            | 105   |
|              |       | Rear Udder Height      | 108   |
|              |       | Rear Udder Width       | 105   |
|              |       | Centre Ligament        | 102   |
|              |       | Teat Place Front       | 108 O |
|              |       | Teat Place Rear        | 105 C |
|              |       | Teat Length            | 105   |

# JFROST

Varley x Jeronimo

## Merrijae JFrost

**Bull ID:** JFROST **Sire:** Carenda Varley **Herdbook:** 2234156 **Haplotype:** HH1F HH2F HH3F HH4F HH5F HH6F **Casein:** A22 BB  
**Nasis:** 12FFVR9 **Dam:** Merrijae Jeronimo Jewel 2nd GP84 **Breeder:** Sherrie & James Hurrell, Yankaililla, SA **Genetic Code:** MWF

|                |                |                |                |
|----------------|----------------|----------------|----------------|
| <b>\$BPI</b>   | <b>HWI</b>     | <b>SI</b>      | <b>ASI</b>     |
| <b>456/69%</b> | <b>304/66%</b> | <b>547/66%</b> | <b>298/78%</b> |



- The “constructor” bull leaving powerful, black and wide framed daughters
- Great example of Dairy Strength combining angularity, width, and ideal rumps
- Combines extreme Milk components and improved Udder Health

| ABV 04/26  |                   |              |                 | G dtrs G herds RIP G% |                  |
|------------|-------------------|--------------|-----------------|-----------------------|------------------|
| Protein kg | <b>20</b> /78%    | Milk Speed   | <b>100</b> /71% | Cell Count            | <b>145</b> /69%  |
| Protein %  | <b>0.43%</b> /78% | Temp         | <b>103</b> /71% | Mastitis Res          | <b>103</b> /62%  |
| Milk L     | <b>-100</b> /78%  | Survival     | <b>101</b> /65% | Daughter Fert         | <b>100</b> /66%  |
| Fat kg     | <b>23</b> /78%    | Calving Ease | <b>100</b> /87% | Feed Saved            | <b>-110</b> /44% |
| Fat %      | <b>0.39%</b> /78% | Gest Length  | <b>-2</b> /92%  | Heat Tol              | <b>90</b> /48%   |

| ABV Type Composite 04/26 |  |  |  | G dtrs G herds Rel 66% |            |
|--------------------------|--|--|--|------------------------|------------|
| Overall Type             |  |  |  |                        | <b>106</b> |
| Mammary Sytem            |  |  |  |                        | <b>107</b> |
| Feet & Legs              |  |  |  |                        | <b>99</b>  |
| Dairy Strength           |  |  |  |                        | <b>105</b> |
| Rump                     |  |  |  |                        | <b>105</b> |

| Type 04/26   |             |                    |              | G dtrs G herds Rel 66% |              |
|--------------|-------------|--------------------|--------------|------------------------|--------------|
| Stature      | <b>110</b>  | Pin Set            | <b>104 H</b> | Fore Attach            | <b>103</b>   |
| Bone Quality | <b>89 C</b> | Loin Strength      | <b>105</b>   | Rear Udder Height      | <b>106</b>   |
| Angularity   | <b>101</b>  | Heel Depth         | <b>98</b>    | Rear Udder Width       | <b>103</b>   |
| Muzzle Width | <b>105</b>  | Rear Leg Set       | <b>100 C</b> | Centre Ligament        | <b>104</b>   |
| Body Depth   | <b>102</b>  | Rear Leg Rear View | <b>101</b>   | Teat Place Front       | <b>105 O</b> |
| Chest Width  | <b>105</b>  | Udder Texture      | <b>100</b>   | Teat Place Rear        | <b>103 C</b> |
| Pin Width    | <b>109</b>  | Udder Depth        | <b>104 O</b> | Teat Length            | <b>102</b>   |

# JOBOLT

Bolti x Pemberton

## Wilara Jobolt P-ET

**Bull ID:** JOBOLT **Sire:** Vala Andreas Bolti P **Herdbook:** 2265680 **Haplotype:** HH1F HH2F HH3F HH4F HH5F HH6F **Casein:** A22 BB  
**Nasis:** 12FFWS8 **Dam:** Wilara Pembo Jo VG87 **Breeder:** Wilara Holsteins, Tinamba, VIC **Genetic Code:** POC MWF

|                |                |                |                |
|----------------|----------------|----------------|----------------|
| <b>\$BPI</b>   | <b>HWI</b>     | <b>SI</b>      | <b>ASI</b>     |
| <b>654/67%</b> | <b>446/64%</b> | <b>905/65%</b> | <b>340/79%</b> |



- JOBOLT P is the High Performance and Profitable Choice
- Combines elite production with favourable type and performance
- Sustainability Choice Sire, Top 1% SI

| ABV 04/26  |                   |              |                 | G dtrs G herds RIP G% |                 |
|------------|-------------------|--------------|-----------------|-----------------------|-----------------|
| Protein kg | <b>22</b> /79%    | Milk Speed   | <b>103</b> /68% | Cell Count            | <b>147</b> /68% |
| Protein %  | <b>0.44%</b> /79% | Temp         | <b>103</b> /68% | Mastitis Res          | <b>107</b> /54% |
| Milk L     | <b>-39</b> /79%   | Survival     | <b>105</b> /60% | Daughter Fert         | <b>98</b> /61%  |
| Fat kg     | <b>28</b> /79%    | Calving Ease | <b>101</b> /93% | Feed Saved            | <b>33</b> /44%  |
| Fat %      | <b>0.43%</b> /79% | Gest Length  | <b>3</b> /96%   | Heat Tol              | <b>97</b> /48%  |

| ABV Type Composite 04/26 |  |  |  | G dtrs G herds Rel 64% |            |
|--------------------------|--|--|--|------------------------|------------|
| Overall Type             |  |  |  |                        | <b>114</b> |
| Mammary Sytem            |  |  |  |                        | <b>107</b> |
| Feet & Legs              |  |  |  |                        | <b>106</b> |
| Dairy Strength           |  |  |  |                        | <b>103</b> |
| Rump                     |  |  |  |                        | <b>108</b> |

| Type 04/26   |              |                    |              | G dtrs G herds Rel 64% |              |
|--------------|--------------|--------------------|--------------|------------------------|--------------|
| Stature      | <b>103</b>   | Pin Set            | <b>106 H</b> | Fore Attach            | <b>103</b>   |
| Bone Quality | <b>102 O</b> | Loin Strength      | <b>108</b>   | Rear Udder Height      | <b>105</b>   |
| Angularity   | <b>97</b>    | Heel Depth         | <b>102</b>   | Rear Udder Width       | <b>104</b>   |
| Muzzle Width | <b>102</b>   | Rear Leg Set       | <b>97 O</b>  | Centre Ligament        | <b>102</b>   |
| Body Depth   | <b>100</b>   | Rear Leg Rear View | <b>108</b>   | Teat Place Front       | <b>108 O</b> |
| Chest Width  | <b>104</b>   | Udder Texture      | <b>99</b>    | Teat Place Rear        | <b>100 C</b> |
| Pin Width    | <b>107</b>   | Udder Depth        | <b>106 S</b> | Teat Length            | <b>95</b>    |

# JORDLIV Varley x Nippon

## Wilara Jordliv-ET

**Bull ID:** JORDLIV **Sire:** Carenda Varley  
**Nasis:** 12FFWS9 **Dam:** Wilara Nippon Jordonna-ET GP84

**Herdbook:** 2265674 **Haplotype:** HH1F HH2F HH3F HH4F HH5F HH6F  
**Breeder:** Wilara Holsteins, Tinamba, VIC

|                |                |                |                |
|----------------|----------------|----------------|----------------|
| <b>\$BPI</b>   | <b>HWI</b>     | <b>SI</b>      | <b>ASI</b>     |
| <b>639/69%</b> | <b>421/65%</b> | <b>870/66%</b> | <b>418/78%</b> |

**Casein:** A22 BB  
**Genetic Code:** MWC



- Profitable cows and elite protein improver at 40kgs
- JORDLIV is a production specialist at 870 SI & \$ASI 418
- Improves Type Composites across the board

| ABV 04/26  |                   |              |                 | G dtrs G herds RIP G% |                  |
|------------|-------------------|--------------|-----------------|-----------------------|------------------|
| Protein kg | <b>40</b> /78%    | Milk Speed   | <b>103</b> /70% | Cell Count            | <b>135</b> /68%  |
| Protein %  | <b>0.50%</b> /78% | Temp         | <b>104</b> /70% | Mastitis Res          | <b>102</b> /62%  |
| Milk L     | <b>512</b> /78%   | Survival     | <b>105</b> /64% | Daughter Fert         | <b>100</b> /65%  |
| Fat kg     | <b>25</b> /78%    | Calving Ease | <b>100</b> /81% | Feed Saved            | <b>-128</b> /44% |
| Fat %      | <b>0.05%</b> /78% | Gest Length  | <b>2</b> /89%   | Heat Tol              | <b>89</b> /48%   |

| ABV Type Composite 04/26 |  |  |  | G dtrs G herds Rel 65% |            |
|--------------------------|--|--|--|------------------------|------------|
| Overall Type             |  |  |  |                        | <b>107</b> |
| Mammary Sytem            |  |  |  |                        | <b>107</b> |
| Feet & Legs              |  |  |  |                        | <b>102</b> |
| Dairy Strength           |  |  |  |                        | <b>104</b> |
| Rump                     |  |  |  |                        | <b>108</b> |

| Type 04/26   |             |                    |              | G dtrs G herds Rel 65% |              |
|--------------|-------------|--------------------|--------------|------------------------|--------------|
| Stature      | <b>109</b>  | Pin Set            | <b>104 H</b> | Fore Attach            | <b>101</b>   |
| Bone Quality | <b>99 C</b> | Loin Strength      | <b>106</b>   | Rear Udder Height      | <b>106</b>   |
| Angularity   | <b>101</b>  | Heel Depth         | <b>96</b>    | Rear Udder Width       | <b>105</b>   |
| Muzzle Width | <b>103</b>  | Rear Leg Set       | <b>94 S</b>  | Centre Ligament        | <b>106</b>   |
| Body Depth   | <b>100</b>  | Rear Leg Rear View | <b>105</b>   | Teat Place Front       | <b>104 O</b> |
| Chest Width  | <b>102</b>  | Udder Texture      | <b>101</b>   | Teat Place Rear        | <b>104 C</b> |
| Pin Width    | <b>115</b>  | Udder Depth        | <b>107 S</b> | Teat Length            | <b>101</b>   |

# KEATON Rocknroll x River

## Illawambra Rocknroll Keaton

**Bull ID:** KEATON **Sire:** Westcoast Rocknroll  
**Nasis:** 05FFW29 **Dam:** Illawambra River Kitten GP81

**Herdbook:** 2250381 **Haplotype:** HH1F HH2F HH3F HH4F HH5F HH6F  
**Breeder:** Illawambra Holsteins, Barrengarry, NSW

|                |                |                |                |
|----------------|----------------|----------------|----------------|
| <b>\$BPI</b>   | <b>HWI</b>     | <b>SI</b>      | <b>ASI</b>     |
| <b>668/69%</b> | <b>598/65%</b> | <b>768/66%</b> | <b>249/78%</b> |

**Casein:** A22  
**Genetic Code:**



- New bull offering improvements accross the board
- Easy to use bull with a well balanced production, health and Type ABVs
- Top 1% \$BPI

| ABV 04/26  |                   |              |                 | G dtrs G herds RIP G% |                  |
|------------|-------------------|--------------|-----------------|-----------------------|------------------|
| Protein kg | <b>18</b> /78%    | Milk Speed   | <b>101</b> /71% | Cell Count            | <b>152</b> /69%  |
| Protein %  | <b>0.24%</b> /78% | Temp         | <b>101</b> /71% | Mastitis Res          | <b>109</b> /61%  |
| Milk L     | <b>188</b> /78%   | Survival     | <b>107</b> /64% | Daughter Fert         | <b>108</b> /64%  |
| Fat kg     | <b>22</b> /78%    | Calving Ease | <b>100</b> /70% | Feed Saved            | <b>-108</b> /44% |
| Fat %      | <b>0.20%</b> /78% | Gest Length  | <b>-1</b> /68%  | Heat Tol              | <b>101</b> /48%  |

| ABV Type Composite 04/26 |  |  |  | G dtrs G herds Rel 66% |            |
|--------------------------|--|--|--|------------------------|------------|
| Overall Type             |  |  |  |                        | <b>104</b> |
| Mammary Sytem            |  |  |  |                        | <b>107</b> |
| Feet & Legs              |  |  |  |                        | <b>101</b> |
| Dairy Strength           |  |  |  |                        | <b>98</b>  |
| Rump                     |  |  |  |                        | <b>101</b> |

| Type 04/26   |            |                    |             | G dtrs G herds Rel 66% |             |
|--------------|------------|--------------------|-------------|------------------------|-------------|
| Stature      | <b>105</b> | Pin Set            | <b>99H</b>  | Fore Attach            | <b>107</b>  |
| Bone Quality | <b>98C</b> | Loin Strength      | <b>99</b>   | Rear Udder Height      | <b>106</b>  |
| Angularity   | <b>93</b>  | Heel Depth         | <b>103</b>  | Rear Udder Width       | <b>99</b>   |
| Muzzle Width | <b>104</b> | Rear Leg Set       | <b>98C</b>  | Centre Ligament        | <b>105</b>  |
| Body Depth   | <b>97</b>  | Rear Leg Rear View | <b>100</b>  | Teat Place Front       | <b>1060</b> |
| Chest Width  | <b>101</b> | Udder Texture      | <b>99</b>   | Teat Place Rear        | <b>104C</b> |
| Pin Width    | <b>107</b> | Udder Depth        | <b>111S</b> | Teat Length            | <b>91</b>   |

# LENN

CFP-PP x Delta

## Vala CFP Lenn-P

**Bull ID:** TLGLENN  
**Nasis:** 05FFU35

**Sire:** Vogue CFP PP RC  
**Dam:** Drewholme Delta Leisure

**Herdbook:** AUS2157379  
**Breeder:** Vala HOLSTEINS, Toolamba, Vic

**Haplotype:** HH1F HH2F HH3F HH4F HH5F HH6F

**Casein:** A22 BB  
**Genetic Code:** MWF POC

|                |                |                |                |
|----------------|----------------|----------------|----------------|
| <b>\$BPI</b>   | <b>HWI</b>     | <b>SI</b>      | <b>ASI</b>     |
| <b>505/71%</b> | <b>323/68%</b> | <b>630/68%</b> | <b>353/80%</b> |



- Heterozygous polled
- Use for Calving Ease over heifers
- Offers Overall Type and Mammary Improvement

| ABV 04/26  |            |              |          | 20 dtrs 2 herds RIP 5% |          |  |  |
|------------|------------|--------------|----------|------------------------|----------|--|--|
| Protein kg | 17 /80%    | Milk Speed   | 104 /71% | Cell Count             | 108 /70% |  |  |
| Protein %  | 0.34% /80% | Temp         | 101 /71% | Mastitis Res           | 98 /64%  |  |  |
| Milk L     | -35 /80%   | Survival     | 103 /66% | Daughter Fert          | 100 /65% |  |  |
| Fat kg     | 38 /80%    | Calving Ease | 102 /97% | Feed Saved             | -78 /47% |  |  |
| Fat %      | 0.56% /80% | Gest Length  | -4 /98%  | Heat Tol               | 92 /48%  |  |  |

| ABV Type Composite 04/26 |  |  |  | 15 dtrs 1 herds Rel 69% |  |  |     |
|--------------------------|--|--|--|-------------------------|--|--|-----|
| Overall Type             |  |  |  |                         |  |  | 110 |
| Mammary Sytem            |  |  |  |                         |  |  | 112 |
| Feet & Legs              |  |  |  |                         |  |  | 105 |
| Dairy Strength           |  |  |  |                         |  |  | 100 |
| Rump                     |  |  |  |                         |  |  | 106 |

| Type 04/26   |       |                    |       | 13 dtrs 2 herds Rel 69% |       |  |  |
|--------------|-------|--------------------|-------|-------------------------|-------|--|--|
| Stature      | 107   | Pin Set            | 102 H | Fore Attach             | 111   |  |  |
| Bone Quality | 103 0 | Loin Strength      | 105   | Rear Udder Height       | 112   |  |  |
| Angularity   | 99    | Heel Depth         | 104   | Rear Udder Width        | 104   |  |  |
| Muzzle Width | 101   | Rear Leg Set       | 97 0  | Centre Ligament         | 104   |  |  |
| Body Depth   | 97    | Rear Leg Rear View | 106   | Teat Place Front        | 104 0 |  |  |
| Chest Width  | 97    | Udder Texture      | 102   | Teat Place Rear         | 103 C |  |  |
| Pin Width    | 99    | Udder Depth        | 110 S | Teat Length             | 94    |  |  |

# LASTIN

Fedora x Jett

## Redmaw Fedora Lastin

**Bull ID:** LASTIN  
**Nasis:** 12FFSAF

**Sire:** Sandy-Valley Fedora  
**Dam:** Redmaw Jett Lautaky VG86

**Herdbook:** 2088239  
**Breeder:** Redmaw Holsteins, Lockington, VIC

**Haplotype:** HH1F HH2F HH3F HH4F HH5C HH6F

**Casein:** A12 BB  
**Genetic Code:** MWF

|                |                |                |                |
|----------------|----------------|----------------|----------------|
| <b>\$BPI</b>   | <b>HWI</b>     | <b>SI</b>      | <b>ASI</b>     |
| <b>430/87%</b> | <b>306/82%</b> | <b>542/84%</b> | <b>246/97%</b> |



- Reliable daughter proven sire with positive Milk
- High level of farmers satisfaction
- Profitability through Longevity and reliability

| ABV 04/26  |            |              |          | 284 dtrs 39 herds RIP 24% |           |  |  |
|------------|------------|--------------|----------|---------------------------|-----------|--|--|
| Protein kg | 24 /97%    | Milk Speed   | 103 /90% | Cell Count                | 119 /91%  |  |  |
| Protein %  | 0.34% /97% | Temp         | 101 /90% | Mastitis Res              | 99 /65%   |  |  |
| Milk L     | 239 /97%   | Survival     | 105 /82% | Daughter Fert             | 103 /80%  |  |  |
| Fat kg     | 13 /97%    | Calving Ease | 100 /98% | Feed Saved                | -116 /59% |  |  |
| Fat %      | 0.05% /97% | Gest Length  | -1 /99%  | Heat Tol                  | 96 /48%   |  |  |

| ABV Type Composite 04/26 |  |  |  | 111 dtrs 16 herds Rel 91% |  |  |     |
|--------------------------|--|--|--|---------------------------|--|--|-----|
| Overall Type             |  |  |  |                           |  |  | 108 |
| Mammary Sytem            |  |  |  |                           |  |  | 107 |
| Feet & Legs              |  |  |  |                           |  |  | 104 |
| Dairy Strength           |  |  |  |                           |  |  | 105 |
| Rump                     |  |  |  |                           |  |  | 102 |

| Type 04/26   |      |                    |       | 125 dtrs 19 herds Rel 91% |      |  |  |
|--------------|------|--------------------|-------|---------------------------|------|--|--|
| Stature      | 109  | Pin Set            | 94 H  | Fore Attach               | 101  |  |  |
| Bone Quality | 97 C | Loin Strength      | 102   | Rear Udder Height         | 110  |  |  |
| Angularity   | 101  | Heel Depth         | 108   | Rear Udder Width          | 108  |  |  |
| Muzzle Width | 106  | Rear Leg Set       | 95 0  | Centre Ligament           | 103  |  |  |
| Body Depth   | 102  | Rear Leg Rear View | 102   | Teat Place Front          | 98 W |  |  |
| Chest Width  | 103  | Udder Texture      | 103   | Teat Place Rear           | 98 C |  |  |
| Pin Width    | 106  | Udder Depth        | 103 0 | Teat Length               | 98   |  |  |

# LOLLYMAN

Candyman x Varley

|                |                |                |                |
|----------------|----------------|----------------|----------------|
| <b>\$BPI</b>   | <b>HWI</b>     | <b>SI</b>      | <b>ASI</b>     |
| <b>721/65%</b> | <b>564/61%</b> | <b>880/62%</b> | <b>434/76%</b> |

## Wilara Lollyman

**Bull ID:** LOLLYMAN **Sire:** Peak Candyman **Herdbook:** 2317312 **Haplotype:** HH1F HH2F HH3F HH4F HH5C HH6F **Casein:** A12 BB  
**Nasis:** 12FFXK5 **Dam:** Wilara Varley Love **Breeder:** Wilara Holsteins, Tinamba, VIC **Genetic Code:** MWF



| ABV 04/26  |            |              |          | G dtrs G herds RIP G% |          |
|------------|------------|--------------|----------|-----------------------|----------|
| Protein kg | 27 /76%    | Milk Speed   | 102 /67% | Cell Count            | 134 /66% |
| Protein %  | 0.52% /76% | Temp         | 101 /67% | Mastitis Res          | 102 /51% |
| Milk L     | -23 /76%   | Survival     | 104 /56% | Daughter Fert         | 106 /58% |
| Fat kg     | 38 /76%    | Calving Ease | 100 /69% | Feed Saved            | -89 /42% |
| Fat %      | 0.56% /76% | Gest Length  | -2 /72%  | Heat Tol              | 88 /48%  |

| ABV Type Composite 04/26 |  |  |  | G dtrs G herds Rel 61% |     |
|--------------------------|--|--|--|------------------------|-----|
| Overall Type             |  |  |  |                        | 108 |
| Mammary Sytem            |  |  |  |                        | 112 |
| Feet & Legs              |  |  |  |                        | 103 |
| Dairy Strength           |  |  |  |                        | 105 |
| Rump                     |  |  |  |                        | 101 |

| Type 04/26   |       |                    |       | G dtrs G herds Rel 61% |       |
|--------------|-------|--------------------|-------|------------------------|-------|
| Stature      | 103   | Pin Set            | 98 H  | Fore Attach            | 101   |
| Bone Quality | 100 C | Loin Strength      | 102   | Rear Udder Height      | 109   |
| Angularity   | 103   | Heel Depth         | 101   | Rear Udder Width       | 108   |
| Muzzle Width | 105   | Rear Leg Set       | 98 C  | Centre Ligament        | 108   |
| Body Depth   | 100   | Rear Leg Rear View | 107   | Teat Place Front       | 113 C |
| Chest Width  | 103   | Udder Texture      | 102   | Teat Place Rear        | 108 C |
| Pin Width    | 102   | Udder Depth        | 103 O | Teat Length            | 99    |

- High rated new bull, top 1% \$BPI, SI and ASI
- Production Specialist, \$434 BPI with high milk solids and components
- 112 for mammary improvement makes this bull an easy choice.

# LUKIE

Varley x Superdave

|                |                |                |                |
|----------------|----------------|----------------|----------------|
| <b>\$BPI</b>   | <b>HWI</b>     | <b>SI</b>      | <b>ASI</b>     |
| <b>589/69%</b> | <b>340/66%</b> | <b>796/66%</b> | <b>484/79%</b> |

## Wilara Lukie

**Bull ID:** LUKIE **Sire:** Carenda Varley **Herdbook:** 2202859 **Haplotype:** HH1F HH2F HH3F HH4F HH5F HH6F **Casein:** A12 BB  
**Nasis:** 12FFVR7 **Dam:** Wilara Superdave Lulu GP84 **Breeder:** Wilara Holsteins, Tinamba, VIC **Genetic Code:** MWC



| ABV 04/26  |            |              |          | G dtrs G herds RIP G% |           |
|------------|------------|--------------|----------|-----------------------|-----------|
| Protein kg | 41 /79%    | Milk Speed   | 100 /71% | Cell Count            | 124 /70%  |
| Protein %  | 0.53% /79% | Temp         | 104 /71% | Mastitis Res          | 100 /60%  |
| Milk L     | 466 /79%   | Survival     | 101 /65% | Daughter Fert         | 100 /66%  |
| Fat kg     | 36 /79%    | Calving Ease | 101 /97% | Feed Saved            | -144 /45% |
| Fat %      | 0.23% /79% | Gest Length  | 1 /98%   | Heat Tol              | 87 /48%   |

| ABV Type Composite 04/26 |  |  |  | G dtrs G herds Rel 66% |     |
|--------------------------|--|--|--|------------------------|-----|
| Overall Type             |  |  |  |                        | 110 |
| Mammary Sytem            |  |  |  |                        | 108 |
| Feet & Legs              |  |  |  |                        | 101 |
| Dairy Strength           |  |  |  |                        | 105 |
| Rump                     |  |  |  |                        | 104 |

| Type 04/26   |      |                    |       | G dtrs G herds Rel 66% |       |
|--------------|------|--------------------|-------|------------------------|-------|
| Stature      | 113  | Pin Set            | 101 H | Fore Attach            | 100   |
| Bone Quality | 97 C | Loin Strength      | 104   | Rear Udder Height      | 105   |
| Angularity   | 105  | Heel Depth         | 98    | Rear Udder Width       | 106   |
| Muzzle Width | 104  | Rear Leg Set       | 99 C  | Centre Ligament        | 105   |
| Body Depth   | 101  | Rear Leg Rear View | 106   | Teat Place Front       | 108 O |
| Chest Width  | 100  | Udder Texture      | 105   | Teat Place Rear        | 102 C |
| Pin Width    | 107  | Udder Depth        | 101 O | Teat Length            | 107   |

- Our leading Type & Production specialist with 41kg Protein and an ASI of \$484
- Offers correct rumps, well attached udders and longer teats
- Pedigree performance ideal for grazing systems

# LIONIZE

Nipit-PP X Luster-P

## Summit View Lionize-PP

**Bull ID:** TLGLIONIZE  
**Nasis:** 05FFV24

**Sire:** Vogue Nipit PP  
**Dam:** Stantons Luster Lucky PP

**Herdbook:** AUS2199626  
**Breeder:** Genetics Australia, Camperdown, VIC

**Haplotype:** HH1F HH2F HH3F HH4F HH5F HH6F

**Casein:** A22  
**Genetic Code:** MWF POS



- Homozygous Polled
- Offers a well-balanced ABV for production & Type

| ABV 04/26     | G dtrs | G herds | RIP G% |
|---------------|--------|---------|--------|
| Protein kg    | 19     | /78%    |        |
| Protein %     | 0.21%  | /78%    |        |
| Milk L        | 293    | /78%    |        |
| Fat kg        | 32     | /78%    |        |
| Fat %         | 0.29%  | /78%    |        |
| Milk Speed    | 102    | /70%    |        |
| Temp          | 101    | /70%    |        |
| Survival      | 103    | /63%    |        |
| Calving Ease  | 101    | /91%    |        |
| Gest Length   | 2      | /88%    |        |
| Cell Count    | 111    | /69%    |        |
| Mastitis Res  | 98     | /57%    |        |
| Daughter Fert | 98     | /62%    |        |
| Feed Saved    | -199   | /44%    |        |
| Heat Tol      | 96     | /48%    |        |

| \$BPI   | HWI     | SI      | ASI     |
|---------|---------|---------|---------|
| 369/68% | 156/64% | 453/65% | 310/78% |

| ABV Type Composite 04/26 | G dtrs | G herds | Rel 65% |
|--------------------------|--------|---------|---------|
| Overall Type             |        |         | 106     |
| Mammary Sytem            |        |         | 106     |
| Feet & Legs              |        |         | 100     |
| Dairy Strength           |        |         | 102     |
| Rump                     |        |         | 105     |

| Type 04/26   | G dtrs | G herds            | Rel 65% |                   |       |
|--------------|--------|--------------------|---------|-------------------|-------|
| Stature      | 110    | Pin Set            | 104 H   | Fore Attach       | 107   |
| Bone Quality | 104 O  | Loin Strength      | 105     | Rear Udder Height | 109   |
| Angularity   | 105    | Heel Depth         | 104     | Rear Udder Width  | 99    |
| Muzzle Width | 99     | Rear Leg Set       | 102 C   | Centre Ligament   | 104   |
| Body Depth   | 101    | Rear Leg Rear View | 97      | Teat Place Front  | 100 W |
| Chest Width  | 94     | Udder Texture      | 105     | Teat Place Rear   | 104 C |
| Pin Width    | 103    | Udder Depth        | 110 S   | Teat Length       | 100   |

# LANGLEY

Mdouglas x Nipit PP

## Summit View Langley PP

**Bull ID:** TLGLANGLEY  
**Nasis:** 05ffx23

**Sire:** Vala Mdouglas PP  
**Dam:** TLG Nipit Lasting PO GP81

**Herdbook:** AUS2281874  
**Breeder:** Genetics Australia, Camperdown, VIC

**Haplotype:** HH1F HH2F HH3F HH4F HH5F HH6F

**Casein:** A22  
**Genetic Code:** MWF POS



- Homozygous Polled
- Improves Rumps & Mammary Systems

| ABV 04/26     | G dtrs | G herds | RIP G% |
|---------------|--------|---------|--------|
| Protein kg    | 13     | /77%    |        |
| Protein %     | 0.08%  | /77%    |        |
| Milk L        | 335    | /77%    |        |
| Fat kg        | 21     | /77%    |        |
| Fat %         | 0.09%  | /77%    |        |
| Milk Speed    | 102    | /67%    |        |
| Temp          | 102    | /67%    |        |
| Survival      | 103    | /57%    |        |
| Calving Ease  | 102    | /70%    |        |
| Gest Length   | 0      | /67%    |        |
| Cell Count    | 124    | /67%    |        |
| Mastitis Res  | 102    | /51%    |        |
| Daughter Fert | 101    | /58%    |        |
| Feed Saved    | -193   | /42%    |        |
| Heat Tol      | 99     | /48%    |        |

| \$BPI   | HWI     | SI      | ASI     |
|---------|---------|---------|---------|
| 329/65% | 199/61% | 349/63% | 191/77% |

| ABV Type Composite 04/26 | G dtrs | G herds | Rel 62% |
|--------------------------|--------|---------|---------|
| Overall Type             |        |         | 102     |
| Mammary Sytem            |        |         | 107     |
| Feet & Legs              |        |         | 99      |
| Dairy Strength           |        |         | 100     |
| Rump                     |        |         | 105     |

| Type 04/26   | G dtrs | G herds            | Rel 62% |                   |      |
|--------------|--------|--------------------|---------|-------------------|------|
| Stature      | 106    | Pin Set            | 102H    | Fore Attach       | 107  |
| Bone Quality | 101C   | Loin Strength      | 104     | Rear Udder Height | 109  |
| Angularity   | 98     | Heel Depth         | 104     | Rear Udder Width  | 102  |
| Muzzle Width | 102    | Rear Leg Set       | 103C    | Centre Ligament   | 101  |
| Body Depth   | 99     | Rear Leg Rear View | 98      | Teat Place Front  | 1020 |
| Chest Width  | 100    | Udder Texture      | 98      | Teat Place Rear   | 108C |
| Pin Width    | 104    | Udder Depth        | 113S    | Teat Length       | 95   |

# LOWMAN

Amen x Nipit

## Summit View Lowman PP-ET

**Bull ID:** LOWMAN  
**Nasis:** 12FFXLO

**Sire:** Ar-Joy Cu Lp Amen PP ET  
**Dam:** TLG Nipit Lasting-IMP-ET-PO GP81

**Herdbook:** 2281876  
**Breeder:** Genetics Australia, Camperdown, VIC

**Haplotype:** HH1F HH2F HH3F HH4F HH5F HH6F

**Casein:** A22 BB  
**Genetic Code:** POS MWF



- Homozygous Polled
- Improves Overall Type, Mammary and Rumps

| ABV 04/26     | G dtrs | G herds | RIP G% |
|---------------|--------|---------|--------|
| Protein kg    | 13     | /77%    |        |
| Protein %     | -0.02% | /77%    |        |
| Milk L        | 528    | /77%    |        |
| Fat kg        | 12     | /77%    |        |
| Fat %         | -0.15% | /77%    |        |
| Milk Speed    | 101    | /67%    |        |
| Temp          | 102    | /67%    |        |
| Survival      | 105    | /55%    |        |
| Calving Ease  | 101    | /70%    |        |
| Gest Length   | 0      | /67%    |        |
| Cell Count    | 142    | /69%    |        |
| Mastitis Res  | 107    | /47%    |        |
| Daughter Fert | 97     | /56%    |        |
| Feed Saved    | -177   | /44%    |        |
| Heat Tol      | 102    | /48%    |        |

| \$BPI   | HWI     | SI      | ASI     |
|---------|---------|---------|---------|
| 315/66% | 169/61% | 383/63% | 125/77% |

| ABV Type Composite 04/26 | G dtrs | G herds | Rel 65% |
|--------------------------|--------|---------|---------|
| Overall Type             |        |         | 106     |
| Mammary Sytem            |        |         | 105     |
| Feet & Legs              |        |         | 99      |
| Dairy Strength           |        |         | 100     |
| Rump                     |        |         | 105     |

| Type 04/26   | G dtrs | G herds            | Rel 65% |                   |       |
|--------------|--------|--------------------|---------|-------------------|-------|
| Stature      | 111    | Pin Set            | 101 H   | Fore Attach       | 106   |
| Bone Quality | 102 O  | Loin Strength      | 103     | Rear Udder Height | 104   |
| Angularity   | 100    | Heel Depth         | 102     | Rear Udder Width  | 98    |
| Muzzle Width | 102    | Rear Leg Set       | 103 C   | Centre Ligament   | 104   |
| Body Depth   | 100    | Rear Leg Rear View | 104     | Teat Place Front  | 100 W |
| Chest Width  | 97     | Udder Texture      | 103     | Teat Place Rear   | 101 C |
| Pin Width    | 107    | Udder Depth        | 112 S   | Teat Length       | 101   |

# MDOUGLAS Fomo-P x Bighit-P

|                |                |                |                |
|----------------|----------------|----------------|----------------|
| <b>\$BPI</b>   | <b>HWI</b>     | <b>SI</b>      | <b>ASI</b>     |
| <b>454/67%</b> | <b>341/64%</b> | <b>501/64%</b> | <b>224/77%</b> |

## Vala Fomo MDouglas-PP

**Bull ID:** TLGMDOUGLAS    **Sire:** Vogue Fomo P    **Herdbook:** AUS2191761    **Haplotype:** HH1F HH2F HH3F HH4F HH5F HH6F    **Casein:** A22 BB  
**Nasis:** 05FFV22    **Dam:** Stantons Bighit Melody    **Breeder:** Vala HOLSTEINS, Toolamba, Vic    **Genetic Code:** MWF POS



| ABV 04/26     |                   | G dtrs G herds RIP G% |                  |
|---------------|-------------------|-----------------------|------------------|
| Protein kg    | <b>10</b> /77%    | Milk Speed            | <b>104</b> /69%  |
| Protein %     | <b>0.13%</b> /77% | Temp                  | <b>100</b> /69%  |
| Milk L        | <b>120</b> /77%   | Survival              | <b>104</b> /59%  |
| Fat kg        | <b>27</b> /77%    | Calving Ease          | <b>99</b> /84%   |
| Fat %         | <b>0.32%</b> /77% | Gest Length           | <b>-1</b> /83%   |
| Cell Count    | <b>126</b> /69%   | Mastitis Res          | <b>105</b> /59%  |
| Daughter Fert | <b>103</b> /62%   | Feed Saved            | <b>-145</b> /43% |
| Heat Tol      | <b>103</b> /48%   |                       |                  |

| ABV Type Composite 04/26 |  | G dtrs G herds Rel 63% |            |
|--------------------------|--|------------------------|------------|
| Overall Type             |  |                        | <b>102</b> |
| Mammary Sytem            |  |                        | <b>108</b> |
| Feet & Legs              |  |                        | <b>98</b>  |
| Dairy Strength           |  |                        | <b>99</b>  |
| Rump                     |  |                        | <b>101</b> |

| Type 04/26       |              | G dtrs G herds Rel 63% |              |
|------------------|--------------|------------------------|--------------|
| Stature          | <b>104</b>   | Pin Set                | <b>100 H</b> |
| Bone Quality     | <b>98 C</b>  | Loin Strength          | <b>99</b>    |
| Angularity       | <b>96</b>    | Heel Depth             | <b>104</b>   |
| Muzzle Width     | <b>104</b>   | Rear Leg Set           | <b>102 C</b> |
| Body Depth       | <b>98</b>    | Rear Leg Rear View     | <b>95</b>    |
| Chest Width      | <b>102</b>   | Udder Texture          | <b>97</b>    |
| Pin Width        | <b>103</b>   | Udder Depth            | <b>113 S</b> |
| Fore Attach      | <b>108</b>   | Rear Udder Height      | <b>110</b>   |
| Rear Udder Width | <b>98</b>    | Centre Ligament        | <b>103</b>   |
| Teat Place Front | <b>105 O</b> | Teat Place Rear        | <b>108 C</b> |
| Teat Length      | <b>93</b>    |                        |              |

- Homozygous Polled
- International sire of sons
- Daughter will be moderate stature and more heat tolerant

# MADAGASCAR Australind x AltaExquisite

|                |                |                |                |
|----------------|----------------|----------------|----------------|
| <b>\$BPI</b>   | <b>HWI</b>     | <b>SI</b>      | <b>ASI</b>     |
| <b>688/65%</b> | <b>548/60%</b> | <b>866/62%</b> | <b>446/77%</b> |

## Summit View Madagascar-ET

**Bull ID:** MADAGASCAR    **Sire:** Carenda Australind    **Herdbook:** 2306347    **Haplotype:** HH1F,HH2F,HH3F,HH4F,HH5F,HH6C    **Casein:** A22 AB  
**Nasis:** 12FFYE8    **Dam:** Peak Maude    **Breeder:** Genetics Australia, Camperdown, VIC    **Genetic Code:** MWF



| ABV 04/26     |                   | G dtrs G herds RIP G% |                 |
|---------------|-------------------|-----------------------|-----------------|
| Protein kg    | <b>28</b> /77%    | Milk Speed            | <b>104</b> /67% |
| Protein %     | <b>0.45%</b> /77% | Temp                  | <b>99</b> /67%  |
| Milk L        | <b>148</b> /77%   | Survival              | <b>105</b> /56% |
| Fat kg        | <b>42</b> /77%    | Calving Ease          | <b>101</b> /70% |
| Fat %         | <b>0.51%</b> /77% | Gest Length           | <b>-3</b> /68%  |
| Cell Count    | <b>121</b> /66%   | Mastitis Res          | <b>98</b> /50%  |
| Daughter Fert | <b>106</b> /57%   | Feed Saved            | <b>-84</b> /42% |
| Heat Tol      | <b>94</b> /48%    |                       |                 |

| ABV Type Composite 04/26 |  | G dtrs G herds Rel 61% |            |
|--------------------------|--|------------------------|------------|
| Overall Type             |  |                        | <b>106</b> |
| Mammary Sytem            |  |                        | <b>109</b> |
| Feet & Legs              |  |                        | <b>104</b> |
| Dairy Strength           |  |                        | <b>102</b> |
| Rump                     |  |                        | <b>99</b>  |

| Type 04/26       |              | G dtrs G herds Rel 61% |              |
|------------------|--------------|------------------------|--------------|
| Stature          | <b>104</b>   | Pin Set                | <b>98 H</b>  |
| Bone Quality     | <b>107 S</b> | Loin Strength          | <b>95</b>    |
| Angularity       | <b>99</b>    | Heel Depth             | <b>108</b>   |
| Muzzle Width     | <b>103</b>   | Rear Leg Set           | <b>98 C</b>  |
| Body Depth       | <b>100</b>   | Rear Leg Rear View     | <b>101</b>   |
| Chest Width      | <b>103</b>   | Udder Texture          | <b>102</b>   |
| Pin Width        | <b>107</b>   | Udder Depth            | <b>103 O</b> |
| Fore Attach      | <b>106</b>   | Rear Udder Height      | <b>110</b>   |
| Rear Udder Width | <b>108</b>   | Centre Ligament        | <b>105</b>   |
| Teat Place Front | <b>99 W</b>  | Teat Place Rear        | <b>100 C</b> |
| Teat Length      | <b>98</b>    |                        |              |

- New bull blending the best of Australia and US breeding
- Top 1% \$BPI, SI and \$ASI. High Offer plus milk with high milk solids
- Improves type & mammary systems

# MAEBULL Palermo x Shottle

## Calister Maebull-IMP-ET

**Bull ID:** MAEBULL **Sire:** Glenn-Ann Palermo  
**Nasis:** 12FFJ49 **Dam:** Morningview Shtl Lucy EX2E

**Herdbook:** 1712643 **Haplotype:** HH1F HH2F HH3C HH4F HH5F HH6F **Casein:** A22 AB  
**Breeder:** Calister Holsteins, Calivil, VIC **Genetic Code:** MWF



- Mr Reliability, close to 5,000 milking daughters
- Health and Heat Tolerance improver

| ABV 04/26     | 4958 dtrs | 316 herds | RIP 18% |
|---------------|-----------|-----------|---------|
| Protein kg    | 5         | /99%      |         |
| Protein %     | 0.01%     | /99%      |         |
| Milk L        | 174       | /99%      |         |
| Fat kg        | 1         | /99%      |         |
| Fat %         | -0.10%    | /99%      |         |
| Milk Speed    | 100       | /99%      |         |
| Temp          | 100       | /99%      |         |
| Survival      | 102       | /99%      |         |
| Calving Ease  | 100       | /99%      |         |
| Gest Length   | 2         | /99%      |         |
| Cell Count    | 149       | /99%      |         |
| Mastitis Res  | 103       | /96%      |         |
| Daughter Fert | 102       | /99%      |         |
| Feed Saved    | -10       | /62%      |         |
| Heat Tol      | 106       | /48%      |         |

| \$BPI   | HWI     | SI      | ASI    |
|---------|---------|---------|--------|
| 215/96% | 183/92% | 253/91% | 27/99% |

| ABV Type Composite 04/26 | 1448 dtrs | 139 herds | Rel 99% |
|--------------------------|-----------|-----------|---------|
| Overall Type             |           |           | 106     |
| Mammary Sytem            |           |           | 102     |
| Feet & Legs              |           |           | 98      |
| Dairy Strength           |           |           | 103     |
| Rump                     |           |           | 103     |

| Type 04/26   | 1213 dtrs | 94 herds           | Rel 99% |                   |      |
|--------------|-----------|--------------------|---------|-------------------|------|
| Stature      | 101       | Pin Set            | 102 H   | Fore Attach       | 107  |
| Bone Quality | 93 C      | Loin Strength      | 101     | Rear Udder Height | 102  |
| Angularity   | 102       | Heel Depth         | 97      | Rear Udder Width  | 100  |
| Muzzle Width | 99        | Rear Leg Set       | 104 C   | Centre Ligament   | 99   |
| Body Depth   | 102       | Rear Leg Rear View | 102     | Teat Place Front  | 95 W |
| Chest Width  | 102       | Udder Texture      | 102     | Teat Place Rear   | 94 C |
| Pin Width    | 101       | Udder Depth        | 103 O   | Teat Length       | 100  |

# NORTHEAST Eastern x Karat

## Emu Banks Northeast-ET

**Bull ID:** NORTHEAST **Sire:** Eastern Star Lockeddown  
**Nasis:** 12FFXK0 **Dam:** Emu Banks Karat Diamond 12888 VG85

**Herdbook:** 2267777 **Haplotype:** HH1F HH2F HH3F HH4F HH5F HH6F **Casein:** A22 AB  
**Breeder:** Emu Banks Holsteins, Terang, VIC **Genetic Code:** MWF



- Top 1% \$BPI
- Use for Overall Type & Mammary Improvement

| ABV 04/26     | G dtrs | G herds | RIP G% |
|---------------|--------|---------|--------|
| Protein kg    | 10     | /77%    |        |
| Protein %     | 0.21%  | /77%    |        |
| Milk L        | -48    | /77%    |        |
| Fat kg        | 26     | /77%    |        |
| Fat %         | 0.40%  | /77%    |        |
| Milk Speed    | 100    | /67%    |        |
| Temp          | 104    | /67%    |        |
| Survival      | 104    | /57%    |        |
| Calving Ease  | 100    | /84%    |        |
| Gest Length   | -1     | /90%    |        |
| Cell Count    | 154    | /65%    |        |
| Mastitis Res  | 107    | /55%    |        |
| Daughter Fert | 108    | /60%    |        |
| Feed Saved    | -71    | /42%    |        |
| Heat Tol      | 97     | /48%    |        |

| \$BPI   | HWI     | SI      | ASI     |
|---------|---------|---------|---------|
| 659/66% | 576/62% | 703/63% | 227/77% |

| ABV Type Composite 04/26 | G dtrs | G herds | Rel 62% |
|--------------------------|--------|---------|---------|
| Overall Type             |        |         | 111     |
| Mammary Sytem            |        |         | 114     |
| Feet & Legs              |        |         | 102     |
| Dairy Strength           |        |         | 100     |
| Rump                     |        |         | 107     |

| Type 04/26   | G dtrs | G herds            | Rel 62% |                   |       |
|--------------|--------|--------------------|---------|-------------------|-------|
| Stature      | 107    | Pin Set            | 106 H   | Fore Attach       | 109   |
| Bone Quality | 100 C  | Loin Strength      | 102     | Rear Udder Height | 111   |
| Angularity   | 98     | Heel Depth         | 102     | Rear Udder Width  | 107   |
| Muzzle Width | 102    | Rear Leg Set       | 100 C   | Centre Ligament   | 105   |
| Body Depth   | 97     | Rear Leg Rear View | 100     | Teat Place Front  | 110 C |
| Chest Width  | 100    | Udder Texture      | 102     | Teat Place Rear   | 103 C |
| Pin Width    | 107    | Udder Depth        | 107 S   | Teat Length       | 93    |

# MRRIGHT Almater x Bandares

## Vala Mr Right

**Bull ID:** TLGMRRIGHT **Sire:** Westcoast Almater  
**Nasis:** 05FFU36 **Dam:** Vala Bandares Sheana

**Herdbook:** AUS2143902 **Haplotype:** HH1F HH2F HH3F HH4F HH5F HH6F **Casein:** A22 BB  
**Breeder:** Vala HOLSTEINS, Toolamba, Vic **Genetic Code:** MWF



- Offers a well-balanced Production & Type ABV
- Use to improver Daughter Fertility and udders

| ABV 04/26     | 24 dtrs | 5 herds | RIP 58% |
|---------------|---------|---------|---------|
| Protein kg    | 12      | /80%    |         |
| Protein %     | 0.18%   | /80%    |         |
| Milk L        | 76      | /80%    |         |
| Fat kg        | 26      | /80%    |         |
| Fat %         | 0.34%   | /80%    |         |
| Milk Speed    | 104     | /73%    |         |
| Temp          | 100     | /73%    |         |
| Survival      | 107     | /62%    |         |
| Calving Ease  | 100     | /99%    |         |
| Gest Length   | -3      | /99%    |         |
| Cell Count    | 125     | /69%    |         |
| Mastitis Res  | 102     | /65%    |         |
| Daughter Fert | 110     | /64%    |         |
| Feed Saved    | -133    | /43%    |         |
| Heat Tol      | 100     | /48%    |         |

| \$BPI   | HWI     | SI      | ASI     |
|---------|---------|---------|---------|
| 656/70% | 571/66% | 697/67% | 236/80% |

| ABV Type Composite 04/26 | 4 dtrs | 1 herds | Rel 64% |
|--------------------------|--------|---------|---------|
| Overall Type             |        |         | 111     |
| Mammary Sytem            |        |         | 111     |
| Feet & Legs              |        |         | 105     |
| Dairy Strength           |        |         | 100     |
| Rump                     |        |         | 105     |

| Type 04/26   | G dtrs | G herds            | Rel 64% |                   |       |
|--------------|--------|--------------------|---------|-------------------|-------|
| Stature      | 104    | Pin Set            | 106 H   | Fore Attach       | 108   |
| Bone Quality | 101 C  | Loin Strength      | 103     | Rear Udder Height | 110   |
| Angularity   | 96     | Heel Depth         | 105     | Rear Udder Width  | 103   |
| Muzzle Width | 101    | Rear Leg Set       | 101 C   | Centre Ligament   | 104   |
| Body Depth   | 97     | Rear Leg Rear View | 104     | Teat Place Front  | 109 O |
| Chest Width  | 104    | Udder Texture      | 102     | Teat Place Rear   | 105 C |
| Pin Width    | 103    | Udder Depth        | 112 S   | Teat Length       | 100   |

# NOUGAT

Candyman x Bolti

## Wilara Nougat P-ET

**Bull ID:** NOUGAT  
**Nasis:** 12FFXK4

**Sire:** Peak Candyman ET  
**Dam:** Wilara Calister B Nickie GP83

**Herdbook:** 2419135  
**Breeder:** Wilara Holsteins, Tinamba, VIC

**Haplotype:** HH1F HH2F HH3F HH4F HH5F HH6F

**Casein:** A12 BB  
**Genetic Code:** POC MWF

|                |                |                |                |
|----------------|----------------|----------------|----------------|
| <b>\$BPI</b>   | <b>HWI</b>     | <b>SI</b>      | <b>ASI</b>     |
| <b>739/64%</b> | <b>615/60%</b> | <b>933/62%</b> | <b>362/76%</b> |



- Exciting New Release Candyman son from a new maternal line
- Offers moderate stature, wide chest & shallow udders
- Sustainability Choice Sire, Top 1% BPI, HWI and SI

| ABV 04/26  |                   |              |                 | G dtrs G herds RIP G% |                 |
|------------|-------------------|--------------|-----------------|-----------------------|-----------------|
| Protein kg | <b>16</b> /76%    | Milk Speed   | <b>102</b> /66% | Cell Count            | <b>139</b> /65% |
| Protein %  | <b>0.35%</b> /76% | Temp         | <b>101</b> /66% | Mastitis Res          | <b>107</b> /49% |
| Milk L     | <b>-71</b> /76%   | Survival     | <b>106</b> /54% | Daughter Fert         | <b>105</b> /55% |
| Fat kg     | <b>40</b> /76%    | Calving Ease | <b>101</b> /67% | Feed Saved            | <b>3</b> /42%   |
| Fat %      | <b>0.61%</b> /76% | Gest Length  | <b>-2</b> /68%  | Heat Tol              | <b>95</b> /48%  |

| ABV Type Composite 04/26 |  |  |  | G dtrs G herds Rel 60% |            |
|--------------------------|--|--|--|------------------------|------------|
| Overall Type             |  |  |  |                        | <b>107</b> |
| Mammary Sytem            |  |  |  |                        | <b>109</b> |
| Feet & Legs              |  |  |  |                        | <b>102</b> |
| Dairy Strength           |  |  |  |                        | <b>100</b> |
| Rump                     |  |  |  |                        | <b>103</b> |

| Type 04/26   |             |                    |              | G dtrs G herds Rel 60% |              |
|--------------|-------------|--------------------|--------------|------------------------|--------------|
| Stature      | <b>101</b>  | Pin Set            | <b>100 H</b> | Fore Attach            | <b>105</b>   |
| Bone Quality | <b>99 C</b> | Loin Strength      | <b>100</b>   | Rear Udder Height      | <b>108</b>   |
| Angularity   | <b>96</b>   | Heel Depth         | <b>99</b>    | Rear Udder Width       | <b>104</b>   |
| Muzzle Width | <b>104</b>  | Rear Leg Set       | <b>100 C</b> | Centre Ligament        | <b>104</b>   |
| Body Depth   | <b>95</b>   | Rear Leg Rear View | <b>108</b>   | Teat Place Front       | <b>108 O</b> |
| Chest Width  | <b>104</b>  | Udder Texture      | <b>99</b>    | Teat Place Rear        | <b>99 C</b>  |
| Pin Width    | <b>104</b>  | Udder Depth        | <b>108 S</b> | Teat Length            | <b>94</b>    |

# OLIVERTWIST

Powerhouse x Varley

## Summit View Olivertwist-ET

**Bull ID:** OLIVERTWIST  
**Nasis:** 12FFYFO

**Sire:** Progenesis Powerhouse  
**Dam:** Dilee Varley Ollie 812

**Herdbook:** 2322812  
**Breeder:** Genetics Australia, Camperdown, VIC

**Haplotype:** HH1F HH2F HH3F HH4F HH5F HH6F

**Casein:** A22  
**Genetic Code:** MWF

|                |                |                |                |
|----------------|----------------|----------------|----------------|
| <b>\$BPI</b>   | <b>HWI</b>     | <b>SI</b>      | <b>ASI</b>     |
| <b>574/68%</b> | <b>485/64%</b> | <b>680/65%</b> | <b>220/78%</b> |



- New bull offering plus milk and high protein kgs
- Health trait improver that can also be used for Calving Ease
- One of the best for Overall Type & Mammary Improvement

| ABV 04/26  |                    |              |                 | G dtrs G herds RIP G% |                 |
|------------|--------------------|--------------|-----------------|-----------------------|-----------------|
| Protein kg | <b>27</b> /78%     | Milk Speed   | <b>101</b> /69% | Cell Count            | <b>150</b> /69% |
| Protein %  | <b>0.29%</b> /78%  | Temp         | <b>104</b> /69% | Mastitis Res          | <b>105</b> /59% |
| Milk L     | <b>430</b> /78%    | Survival     | <b>104</b> /61% | Daughter Fert         | <b>106</b> /66% |
| Fat kg     | <b>8</b> /78%      | Calving Ease | <b>101</b> /70% | Feed Saved            | <b>-85</b> /43% |
| Fat %      | <b>-0.15%</b> /78% | Gest Length  | <b>-2</b> /68%  | Heat Tol              | <b>95</b> /48%  |

| ABV Type Composite 04/26 |  |  |  | G dtrs G herds Rel 64% |            |
|--------------------------|--|--|--|------------------------|------------|
| Overall Type             |  |  |  |                        | <b>111</b> |
| Mammary Sytem            |  |  |  |                        | <b>112</b> |
| Feet & Legs              |  |  |  |                        | <b>101</b> |
| Dairy Strength           |  |  |  |                        | <b>102</b> |
| Rump                     |  |  |  |                        | <b>105</b> |

| Type 04/26   |             |                    |              | G dtrs G herds Rel 64% |              |
|--------------|-------------|--------------------|--------------|------------------------|--------------|
| Stature      | <b>109</b>  | Pin Set            | <b>99 H</b>  | Fore Attach            | <b>103</b>   |
| Bone Quality | <b>95 C</b> | Loin Strength      | <b>107</b>   | Rear Udder Height      | <b>109</b>   |
| Angularity   | <b>98</b>   | Heel Depth         | <b>97</b>    | Rear Udder Width       | <b>109</b>   |
| Muzzle Width | <b>109</b>  | Rear Leg Set       | <b>103 C</b> | Centre Ligament        | <b>110</b>   |
| Body Depth   | <b>96</b>   | Rear Leg Rear View | <b>101</b>   | Teat Place Front       | <b>107 O</b> |
| Chest Width  | <b>101</b>  | Udder Texture      | <b>105</b>   | Teat Place Rear        | <b>108 C</b> |
| Pin Width    | <b>107</b>  | Udder Depth        | <b>105 O</b> | Teat Length            | <b>107</b>   |

# OMG CFP x Jeronimo

## Carenda OMG PP

**Bull ID:** OMG  
**Nasis:** 12FFUR5

**Sire:** Vogue CFP PP RC  
**Dam:** Carenda Jeronimo Vista VG87

**Herdbook:** 2168243  
**Breeder:** Carenda Holsteins, Boyanup, WA

**Haplotype:** HH1F HH2F HH3F HH4F HH5F HH6F  
**Casein:** A22 BB  
**Genetic Code:** POS MWF

|                |                |                |                |
|----------------|----------------|----------------|----------------|
| <b>\$BPI</b>   | <b>HWI</b>     | <b>SI</b>      | <b>ASI</b>     |
| <b>470/67%</b> | <b>321/65%</b> | <b>554/64%</b> | <b>322/75%</b> |



- Homozygous Polled from the Master Breeder herd Carenda Holsteins
- Elite polled sire offering balanced conformation and extreme milk components
- 100% Guarantee with a NO horns Policy.

| ABV 04/26     |                   | 11 dtrs 2 herds RIP 100% |                 |
|---------------|-------------------|--------------------------|-----------------|
| Protein kg    | <b>8 /75%</b>     | Milk Speed               | <b>103 /70%</b> |
| Protein %     | <b>0.47% /75%</b> | Temp                     | <b>100 /70%</b> |
| Milk L        | <b>-634 /75%</b>  | Survival                 | <b>101 /64%</b> |
| Fat kg        | <b>36 /75%</b>    | Calving Ease             | <b>101 /95%</b> |
| Fat %         | <b>0.91% /75%</b> | Gest Length              | <b>2 /97%</b>   |
| Cell Count    | <b>116 /66%</b>   | Mastitis Res             | <b>101 /62%</b> |
| Daughter Fert | <b>102 /66%</b>   | Feed Saved               | <b>-36 /44%</b> |
| Heat Tol      | <b>96 /48%</b>    |                          |                 |

| ABV Type Composite 04/26 |  | G dtrs G herds Rel 66% |            |
|--------------------------|--|------------------------|------------|
| Overall Type             |  |                        | <b>105</b> |
| Mammary Sytem            |  |                        | <b>103</b> |
| Feet & Legs              |  |                        | <b>96</b>  |
| Dairy Strength           |  |                        | <b>102</b> |
| Rump                     |  |                        | <b>110</b> |

| Type 04/26       |              | G dtrs G herds Rel 66% |              |
|------------------|--------------|------------------------|--------------|
| Stature          | <b>103</b>   | Pin Set                | <b>108 O</b> |
| Bone Quality     | <b>95 C</b>  | Loin Strength          | <b>106</b>   |
| Angularity       | <b>99</b>    | Heel Depth             | <b>91</b>    |
| Muzzle Width     | <b>102</b>   | Rear Leg Set           | <b>100 C</b> |
| Body Depth       | <b>102</b>   | Rear Leg Rear View     | <b>98</b>    |
| Chest Width      | <b>102</b>   | Udder Texture          | <b>93</b>    |
| Pin Width        | <b>101</b>   | Udder Depth            | <b>110 S</b> |
| Fore Attach      | <b>105</b>   | Rear Udder Height      | <b>108</b>   |
| Rear Udder Width | <b>96</b>    | Centre Ligament        | <b>99</b>    |
| Teat Place Front | <b>100 W</b> | Teat Place Rear        | <b>99 C</b>  |
| Teat Length      | <b>94</b>    |                        |              |

# PATSYD Varley x River

## Boggy Creek Patsy D

**Bull ID:** PATSYD  
**Nasis:** 12FFXK3

**Sire:** Carenda Varley  
**Dam:** Boggy Creek River Patsy 4296 VG85

**Herdbook:** 2300666  
**Breeder:** Andrew Delaney, Nirranda, VIC

**Haplotype:** HH1F HH2F HH3F HH4F HH5F HH6F  
**Casein:** A22 BB  
**Genetic Code:** MWF

|                |                |                |                |
|----------------|----------------|----------------|----------------|
| <b>\$BPI</b>   | <b>HWI</b>     | <b>SI</b>      | <b>ASI</b>     |
| <b>543/69%</b> | <b>395/65%</b> | <b>814/66%</b> | <b>319/78%</b> |



- High Demand sire - the ultimate choice for increased Teat Length at 114
- High production VARLEY son from a NEW maternal bloodline
- The next generation in functional and sustainable breeding

| ABV 04/26     |                    | G dtrs G herds RIP G% |                 |
|---------------|--------------------|-----------------------|-----------------|
| Protein kg    | <b>36 /78%</b>     | Milk Speed            | <b>100 /71%</b> |
| Protein %     | <b>0.37% /78%</b>  | Temp                  | <b>104 /71%</b> |
| Milk L        | <b>620 /78%</b>    | Survival              | <b>105 /65%</b> |
| Fat kg        | <b>15 /78%</b>     | Calving Ease          | <b>99 /70%</b>  |
| Fat %         | <b>-0.16% /78%</b> | Gest Length           | <b>1 /68%</b>   |
| Cell Count    | <b>151 /70%</b>    | Mastitis Res          | <b>101 /61%</b> |
| Daughter Fert | <b>100 /66%</b>    | Feed Saved            | <b>38 /44%</b>  |
| Heat Tol      | <b>92 /48%</b>     |                       |                 |

| ABV Type Composite 04/26 |  | G dtrs G herds Rel 66% |            |
|--------------------------|--|------------------------|------------|
| Overall Type             |  |                        | <b>110</b> |
| Mammary Sytem            |  |                        | <b>109</b> |
| Feet & Legs              |  |                        | <b>99</b>  |
| Dairy Strength           |  |                        | <b>104</b> |
| Rump                     |  |                        | <b>101</b> |

| Type 04/26       |              | G dtrs G herds Rel 66% |              |
|------------------|--------------|------------------------|--------------|
| Stature          | <b>102</b>   | Pin Set                | <b>96 H</b>  |
| Bone Quality     | <b>98 C</b>  | Loin Strength          | <b>101</b>   |
| Angularity       | <b>104</b>   | Heel Depth             | <b>99</b>    |
| Muzzle Width     | <b>101</b>   | Rear Leg Set           | <b>102 C</b> |
| Body Depth       | <b>102</b>   | Rear Leg Rear View     | <b>101</b>   |
| Chest Width      | <b>100</b>   | Udder Texture          | <b>107</b>   |
| Pin Width        | <b>105</b>   | Udder Depth            | <b>100 O</b> |
| Fore Attach      | <b>103</b>   | Rear Udder Height      | <b>105</b>   |
| Rear Udder Width | <b>108</b>   | Centre Ligament        | <b>107</b>   |
| Teat Place Front | <b>103 O</b> | Teat Place Rear        | <b>101 C</b> |
| Teat Length      | <b>114</b>   |                        |              |

# PILBARA Perseus x Powerball

## Garenda Pilbara

**Bull ID:** PILBARA **Sire:** Westcoast Perseus  
**Nasis:** 12FFRAE **Dam:** Carenda Powerball Vergara P GP82

**Herdbook:** 2050612 **Haplotype:** HH1F HH2F HH3F HH4F HH5F HH6F  
**Breeder:** Carenda Holsteins, Boyanup, WA

|              |            |           |            |
|--------------|------------|-----------|------------|
| <b>\$BPI</b> | <b>HWI</b> | <b>SI</b> | <b>ASI</b> |
| 474/89%      | 414/85%    | 628/85%   | 276/98%    |

**Casein:** A22 BB  
**Genetic Code:** MWC



| ABV 04/26     | 397 dtrs 59 herds RIP 34% |
|---------------|---------------------------|
| Protein kg    | 34 /98%                   |
| Protein %     | 0.42% /98%                |
| Milk L        | 450 /98%                  |
| Fat kg        | 8 /98%                    |
| Fat %         | -0.17% /98%               |
| Milk Speed    | 101 /90%                  |
| Temp          | 101 /90%                  |
| Survival      | 104 /85%                  |
| Calving Ease  | 101 /99%                  |
| Gest Length   | -1 /99%                   |
| Cell Count    | 132 /93%                  |
| Mastitis Res  | 101 /80%                  |
| Daughter Fert | 105 /84%                  |
| Feed Saved    | -69 /58%                  |
| Heat Tol      | 96 /48%                   |

| ABV Type Composite 04/26 | 108 dtrs 21 herds Rel 91% |
|--------------------------|---------------------------|
| Overall Type             | 99                        |
| Mammary Sytem            | 108                       |
| Feet & Legs              | 102                       |
| Dairy Strength           | 101                       |
| Rump                     | 95                        |

| Type 04/26   | 114 dtrs 19 herds Rel 91% |                    |       |                   |       |
|--------------|---------------------------|--------------------|-------|-------------------|-------|
| Stature      | 104                       | Pin Set            | 93 H  | Fore Attach       | 98    |
| Bone Quality | 107 S                     | Loin Strength      | 101   | Rear Udder Height | 108   |
| Angularity   | 100                       | Heel Depth         | 105   | Rear Udder Width  | 105   |
| Muzzle Width | 99                        | Rear Leg Set       | 95 O  | Centre Ligament   | 109   |
| Body Depth   | 100                       | Rear Leg Rear View | 102   | Teat Place Front  | 107 O |
| Chest Width  | 98                        | Udder Texture      | 105   | Teat Place Rear   | 112 C |
| Pin Width    | 103                       | Udder Depth        | 102 O | Teat Length       | 93    |

- 400+ milking daughters makes PILBARA a reliable choice
- Ideal bull to use for cross breeding

# POLLGARTH Banjo x Brinx

## Meadridge Hen Alice Pollgarth P

**Bull ID:** POLLGARTH **Sire:** England-Ammon Banjo P  
**Nasis:** 05FFV27 **Dam:** Meadridge Brinx Alice 3168 GP 83

**Herdbook:** 2226517 **Haplotype:** HH1F HH2F HH3F HH4F HH5F HH6F  
**Breeder:** Meadridge Farms, Cohuna, Vic

|              |            |           |            |
|--------------|------------|-----------|------------|
| <b>\$BPI</b> | <b>HWI</b> | <b>SI</b> | <b>ASI</b> |
| 523/68%      | 477/64%    | 560/65%   | 66/78%     |

**Casein:** A22 BB  
**Genetic Code:** MWF POC



| ABV 04/26     | G dtrs G herds RIP 6% |
|---------------|-----------------------|
| Protein kg    | 9 /78%                |
| Protein %     | 0.26% /78%            |
| Milk L        | -188 /78%             |
| Fat kg        | -4 /78%               |
| Fat %         | 0.06% /78%            |
| Milk Speed    | 102 /67%              |
| Temp          | 100 /67%              |
| Survival      | 106 /61%              |
| Calving Ease  | 100 /85%              |
| Gest Length   | 1 /91%                |
| Cell Count    | 144 /69%              |
| Mastitis Res  | 108 /56%              |
| Daughter Fert | 107 /63%              |
| Feed Saved    | -24 /44%              |
| Heat Tol      | 104 /48%              |

| ABV Type Composite 04/26 | G dtrs G herds Rel 64% |
|--------------------------|------------------------|
| Overall Type             | 112                    |
| Mammary Sytem            | 112                    |
| Feet & Legs              | 100                    |
| Dairy Strength           | 100                    |
| Rump                     | 103                    |

| Type 04/26   | G dtrs G herds Rel 64% |                    |       |                   |       |
|--------------|------------------------|--------------------|-------|-------------------|-------|
| Stature      | 102                    | Pin Set            | 100 H | Fore Attach       | 109   |
| Bone Quality | 102 O                  | Loin Strength      | 99    | Rear Udder Height | 119   |
| Angularity   | 98                     | Heel Depth         | 100   | Rear Udder Width  | 101   |
| Muzzle Width | 98                     | Rear Leg Set       | 100 C | Centre Ligament   | 106   |
| Body Depth   | 98                     | Rear Leg Rear View | 102   | Teat Place Front  | 100 W |
| Chest Width  | 98                     | Udder Texture      | 101   | Teat Place Rear   | 102 C |
| Pin Width    | 104                    | Udder Depth        | 113 S | Teat Length       | 99    |

- Sire of Heat Tolerance specialist HIGHROAD
- Health Traits specialist

# SHERIFF Bolti-P x Almamater

## Vala Bolti Sheriff

**Bull ID:** TLGSHERIFF **Sire:** Vala Andreas Bolti P  
**Nasis:** 05FFW26 **Dam:** Vala Almamater Sheena

**Herdbook:** AUS2227506 **Haplotype:** HH1F HH2F HH3F HH4F HH5F HH6F  
**Breeder:** Vala HOLSTEINS, Toolamba, Vic

|              |            |           |            |
|--------------|------------|-----------|------------|
| <b>\$BPI</b> | <b>HWI</b> | <b>SI</b> | <b>ASI</b> |
| 652/67%      | 592/63%    | 680/64%   | 135/78%    |

**Casein:** A22 BB  
**Genetic Code:** MWF



| ABV 04/26     | G dtrs G herds RIP 6% |
|---------------|-----------------------|
| Protein kg    | 7 /78%                |
| Protein %     | 0.21% /78%            |
| Milk L        | -156 /78%             |
| Fat kg        | 12 /78%               |
| Fat %         | 0.26% /78%            |
| Milk Speed    | 105 /67%              |
| Temp          | 102 /67%              |
| Survival      | 108 /59%              |
| Calving Ease  | 101 /78%              |
| Gest Length   | 4 /71%                |
| Cell Count    | 154 /67%              |
| Mastitis Res  | 107 /55%              |
| Daughter Fert | 109 /61%              |
| Feed Saved    | -95 /43%              |
| Heat Tol      | 101 /48%              |

| ABV Type Composite 04/26 | G dtrs G herds Rel 62% |
|--------------------------|------------------------|
| Overall Type             | 109                    |
| Mammary Sytem            | 110                    |
| Feet & Legs              | 104                    |
| Dairy Strength           | 99                     |
| Rump                     | 109                    |

| Type 04/26   | G dtrs G herds Rel 62% |                    |       |                   |       |
|--------------|------------------------|--------------------|-------|-------------------|-------|
| Stature      | 107                    | Pin Set            | 109 O | Fore Attach       | 105   |
| Bone Quality | 106 S                  | Loin Strength      | 106   | Rear Udder Height | 110   |
| Angularity   | 98                     | Heel Depth         | 106   | Rear Udder Width  | 106   |
| Muzzle Width | 100                    | Rear Leg Set       | 103 C | Centre Ligament   | 104   |
| Body Depth   | 97                     | Rear Leg Rear View | 103   | Teat Place Front  | 106 O |
| Chest Width  | 99                     | Udder Texture      | 99    | Teat Place Rear   | 103 C |
| Pin Width    | 107                    | Udder Depth        | 111 S | Teat Length       | 92    |

- Health Traits specialist
- Use to also improve Mammary Systems

# POLMAX Fedora x Jeronimo

|                |                |                |                |
|----------------|----------------|----------------|----------------|
| <b>\$BPI</b>   | <b>HWI</b>     | <b>SI</b>      | <b>ASI</b>     |
| <b>691/69%</b> | <b>561/66%</b> | <b>842/66%</b> | <b>341/78%</b> |

## Jelbart Polmax P

**Bull ID:** POLMAX **Sire:** Sandy-Valley Fedora **Herdbook:** 2249446 **Haplotype:** HH1F HH2F HH3F HH4F HH5F HH6F **Casein:** A12 AB  
**Nasis:** 12FFWS4 **Dam:** Jelbart Jeronimo 16096 GP82 **Breeder:** Jelbart Dairy Pty Ltd, Leongatha South, VIC **Genetic Code:** MWF POC



| ABV 04/26  |                   |              |                 | G dtrs G herds RIP G% |                 |
|------------|-------------------|--------------|-----------------|-----------------------|-----------------|
| Protein kg | <b>19</b> /78%    | Milk Speed   | <b>104</b> /71% | Cell Count            | <b>149</b> /69% |
| Protein %  | <b>0.36%</b> /78% | Temp         | <b>103</b> /71% | Mastitis Res          | <b>104</b> /61% |
| Milk L     | <b>-12</b> /78%   | Survival     | <b>106</b> /63% | Daughter Fert         | <b>106</b> /66% |
| Fat kg     | <b>34</b> /78%    | Calving Ease | <b>100</b> /95% | Feed Saved            | <b>-57</b> /44% |
| Fat %      | <b>0.50%</b> /78% | Gest Length  | <b>2</b> /97%   | Heat Tol              | <b>92</b> /48%  |

| ABV Type Composite 04/26 |  |  |  | G dtrs G herds Rel 66% |            |
|--------------------------|--|--|--|------------------------|------------|
| Overall Type             |  |  |  |                        | <b>106</b> |
| Mammary Sytem            |  |  |  |                        | <b>107</b> |
| Feet & Legs              |  |  |  |                        | <b>99</b>  |
| Dairy Strength           |  |  |  |                        | <b>100</b> |
| Rump                     |  |  |  |                        | <b>105</b> |

| Type 04/26   |             |                    |              | G dtrs G herds Rel 66% |              |
|--------------|-------------|--------------------|--------------|------------------------|--------------|
| Stature      | <b>107</b>  | Pin Set            | <b>100 H</b> | Fore Attach            | <b>105</b>   |
| Bone Quality | <b>99 C</b> | Loin Strength      | <b>101</b>   | Rear Udder Height      | <b>106</b>   |
| Angularity   | <b>102</b>  | Heel Depth         | <b>98</b>    | Rear Udder Width       | <b>105</b>   |
| Muzzle Width | <b>98</b>   | Rear Leg Set       | <b>99 C</b>  | Centre Ligament        | <b>104</b>   |
| Body Depth   | <b>97</b>   | Rear Leg Rear View | <b>101</b>   | Teat Place Front       | <b>101 O</b> |
| Chest Width  | <b>95</b>   | Udder Texture      | <b>105</b>   | Teat Place Rear        | <b>100 C</b> |
| Pin Width    | <b>105</b>  | Udder Depth        | <b>107 S</b> | Teat Length            | <b>94</b>    |

- Top 1% \$BPI & SI
- Pedigree stacked with farmer favourites - GUTHRIE, DELSANTO, DONANTE
- Heterozygous polled & will improve Mammary Systems

# RIZBOY Manhattan x Montana

|                |                |                |                |
|----------------|----------------|----------------|----------------|
| <b>\$BPI</b>   | <b>HWI</b>     | <b>SI</b>      | <b>ASI</b>     |
| <b>657/67%</b> | <b>535/65%</b> | <b>681/65%</b> | <b>229/75%</b> |

## Emu Banks Rizboy

**Bull ID:** TLGRIZBOY **Sire:** Progenesis Manhattan **Herdbook:** AUS21813557 **Haplotype:** HH1F HH2F HH3F HH4F HH5F HH6F **Casein:** A12 BB  
**Nasis:** 05FFU76 **Dam:** Westcoast Montana Riza **Breeder:** Emu Banks Holsteins, Terang, VIC **Genetic Code:** MWC



| ABV 04/26  |                   |              |                 | 8 dtrs 3 herds RIP 100% |                  |
|------------|-------------------|--------------|-----------------|-------------------------|------------------|
| Protein kg | <b>9</b> /75%     | Milk Speed   | <b>103</b> /69% | Cell Count              | <b>157</b> /66%  |
| Protein %  | <b>0.25%</b> /75% | Temp         | <b>103</b> /69% | Mastitis Res            | <b>107</b> /66%  |
| Milk L     | <b>-156</b> /75%  | Survival     | <b>105</b> /64% | Daughter Fert           | <b>108</b> /65%  |
| Fat kg     | <b>25</b> /75%    | Calving Ease | <b>99</b> /98%  | Feed Saved              | <b>-130</b> /44% |
| Fat %      | <b>0.46%</b> /75% | Gest Length  | <b>-1</b> /98%  | Heat Tol                | <b>96</b> /48%   |

| ABV Type Composite 04/26 |  |  |  | 6 dtrs 1 herds Rel 65% |            |
|--------------------------|--|--|--|------------------------|------------|
| Overall Type             |  |  |  |                        | <b>115</b> |
| Mammary Sytem            |  |  |  |                        | <b>109</b> |
| Feet & Legs              |  |  |  |                        | <b>104</b> |
| Dairy Strength           |  |  |  |                        | <b>101</b> |
| Rump                     |  |  |  |                        | <b>105</b> |

| Type 04/26   |              |                    |              | 6 dtrs 1 herds Rel 65% |              |
|--------------|--------------|--------------------|--------------|------------------------|--------------|
| Stature      | <b>109</b>   | Pin Set            | <b>99 H</b>  | Fore Attach            | <b>112</b>   |
| Bone Quality | <b>101 C</b> | Loin Strength      | <b>99</b>    | Rear Udder Height      | <b>107</b>   |
| Angularity   | <b>100</b>   | Heel Depth         | <b>104</b>   | Rear Udder Width       | <b>100</b>   |
| Muzzle Width | <b>98</b>    | Rear Leg Set       | <b>96 O</b>  | Centre Ligament        | <b>103</b>   |
| Body Depth   | <b>99</b>    | Rear Leg Rear View | <b>100</b>   | Teat Place Front       | <b>106 O</b> |
| Chest Width  | <b>98</b>    | Udder Texture      | <b>103</b>   | Teat Place Rear        | <b>100 C</b> |
| Pin Width    | <b>109</b>   | Udder Depth        | <b>112 S</b> | Teat Length            | <b>100</b>   |

- Top 1% \$BPI from Australia's leading Holstein herd Emu Banks
- Health Traits Improver
- First choice to improve Overall Type

# HONDA Solar x Lundy

## Summit View SL Honda P-ET

**Bull ID:** SLHONDA **Sire:** Badger SSI Slick Solar P **Herdbook:** 2271917 **Haplotype:** HH1F HH2F HH3F HH4F HH5F HH6F **Casein:** A22 AB  
**Nasis:** 12FFWS6 **Dam:** Willtina Lundy Honey 5369 GP82 **Breeder:** Genetics Australia, Camperdown, VIC **Genetic Code:** MWF POC SLC1

|                |                |                |                |
|----------------|----------------|----------------|----------------|
| <b>\$BPI</b>   | <b>HWI</b>     | <b>SI</b>      | <b>ASI</b>     |
| <b>446/63%</b> | <b>469/59%</b> | <b>422/61%</b> | <b>116/77%</b> |



- HONDA is heterozygous Slick and offers so much more
- Heterozygous POLLED and heterozygous SLICK
- A breed leading sire for Daughter Fertility at 113

| ABV 04/26  |            |              |          | G dtrs G herds RIP G% |           |
|------------|------------|--------------|----------|-----------------------|-----------|
| Protein kg | 12 /77%    | Milk Speed   | 101 /62% | Cell Count            | 123 /66%  |
| Protein %  | 0.19% /77% | Temp         | 103 /62% | Mastitis Res          | 103 /45%  |
| Milk L     | 78 /77%    | Survival     | 104 /51% | Daughter Fert         | 113 /52%  |
| Fat kg     | 5 /77%     | Calving Ease | 101 /61% | Feed Saved            | -118 /42% |
| Fat %      | 0.02% /77% | Gest Length  | -1 /66%  | Heat Tol              | 106 /48%  |

| ABV Type Composite 04/26 |  |  |  | G dtrs G herds Rel 61% |     |
|--------------------------|--|--|--|------------------------|-----|
| Overall Type             |  |  |  |                        | 104 |
| Mammary Sytem            |  |  |  |                        | 104 |
| Feet & Legs              |  |  |  |                        | 101 |
| Dairy Strength           |  |  |  |                        | 100 |
| Rump                     |  |  |  |                        | 103 |

| Type 04/26   |       |                    |       | G dtrs G herds Rel 61% |       |
|--------------|-------|--------------------|-------|------------------------|-------|
| Stature      | 108   | Pin Set            | 103 H | Fore Attach            | 100   |
| Bone Quality | 101 C | Loin Strength      | 101   | Rear Udder Height      | 101   |
| Angularity   | 98    | Heel Depth         | 102   | Rear Udder Width       | 104   |
| Muzzle Width | 100   | Rear Leg Set       | 95 O  | Centre Ligament        | 106   |
| Body Depth   | 97    | Rear Leg Rear View | 101   | Teat Place Front       | 100 W |
| Chest Width  | 100   | Udder Texture      | 104   | Teat Place Rear        | 103 C |
| Pin Width    | 104   | Udder Depth        | 106 S | Teat Length            | 95    |

# ICEMAN Solar x Jeronimo

## Jelbart SL Iceman PP-ET

**Bull ID:** SLICEMAN **Sire:** Badger SSI Slick Solar P **Herdbook:** 2273435 **Haplotype:** HH1F HH2F HH3F HH4F HH5F HH6F **Casein:** A22 BB  
**Nasis:** 12FFWS7 **Dam:** Jelbart Jeronimo 16128 VG85 **Breeder:** Jelbart Dairy Pty Ltd, Leongatha South, VIC **Genetic Code:** MWF POS SLC1

|                |                |                |                |
|----------------|----------------|----------------|----------------|
| <b>\$BPI</b>   | <b>HWI</b>     | <b>SI</b>      | <b>ASI</b>     |
| <b>539/64%</b> | <b>415/60%</b> | <b>632/62%</b> | <b>319/77%</b> |



- Popular choice to assist with the management of Heat Stress environments
- Homozygous POLLED and heterozygous SLICK
- 100% Guarantee with a NO horns Policy

| ABV 04/26  |            |              |          | G dtrs G herds RIP G% |           |
|------------|------------|--------------|----------|-----------------------|-----------|
| Protein kg | 19 /77%    | Milk Speed   | 101 /65% | Cell Count            | 126 /66%  |
| Protein %  | 0.32% /77% | Temp         | 101 /65% | Mastitis Res          | 104 /49%  |
| Milk L     | 60 /77%    | Survival     | 103 /54% | Daughter Fert         | 105 /55%  |
| Fat kg     | 31 /77%    | Calving Ease | 101 /74% | Feed Saved            | -112 /42% |
| Fat %      | 0.41% /77% | Gest Length  | 1 /70%   | Heat Tol              | 99 /48%   |

| ABV Type Composite 04/26 |  |  |  | G dtrs G herds Rel 62% |     |
|--------------------------|--|--|--|------------------------|-----|
| Overall Type             |  |  |  |                        | 103 |
| Mammary Sytem            |  |  |  |                        | 107 |
| Feet & Legs              |  |  |  |                        | 96  |
| Dairy Strength           |  |  |  |                        | 99  |
| Rump                     |  |  |  |                        | 101 |

| Type 04/26   |       |                    |       | G dtrs G herds Rel 62% |       |
|--------------|-------|--------------------|-------|------------------------|-------|
| Stature      | 103   | Pin Set            | 96 H  | Fore Attach            | 104   |
| Bone Quality | 100 C | Loin Strength      | 99    | Rear Udder Height      | 108   |
| Angularity   | 99    | Heel Depth         | 100   | Rear Udder Width       | 105   |
| Muzzle Width | 102   | Rear Leg Set       | 102 C | Centre Ligament        | 104   |
| Body Depth   | 96    | Rear Leg Rear View | 100   | Teat Place Front       | 102 O |
| Chest Width  | 100   | Udder Texture      | 102   | Teat Place Rear        | 106 C |
| Pin Width    | 100   | Udder Depth        | 109 S | Teat Length            | 95    |

# TBOLT

Bolti x Kardew

## Wilara Tbolt P-ET

**Bull ID:** TBOLT  
**Nasis:** 12FFWTO

**Sire:** Vala Andreas Bolti P  
**Dam:** Wilara Kardew Tiffany GP82

**Herdbook:** 2265678  
**Breeder:** Wilara Holsteins, Tinamba, VIC

**Haplotype:** HH1F HH2F HH3F HH4F HH5C HH6F  
**Casein:** A22 BB  
**Genetic Code:** MWF POC

|                |                |                |                |
|----------------|----------------|----------------|----------------|
| <b>\$BPI</b>   | <b>HWI</b>     | <b>SI</b>      | <b>ASI</b>     |
| <b>518/67%</b> | <b>345/63%</b> | <b>691/64%</b> | <b>282/78%</b> |



| ABV 04/26  |                   |              |                 | G dtrs        | G herds          | RIP | G% |
|------------|-------------------|--------------|-----------------|---------------|------------------|-----|----|
| Protein kg | <b>23</b> /78%    | Milk Speed   | <b>103</b> /67% | Cell Count    | <b>135</b> /66%  |     |    |
| Protein %  | <b>0.19%</b> /78% | Temp         | <b>104</b> /67% | Mastitis Res  | <b>101</b> /53%  |     |    |
| Milk L     | <b>478</b> /78%   | Survival     | <b>107</b> /60% | Daughter Fert | <b>99</b> /60%   |     |    |
| Fat kg     | <b>25</b> /78%    | Calving Ease | <b>102</b> /73% | Feed Saved    | <b>-107</b> /44% |     |    |
| Fat %      | <b>0.07%</b> /78% | Gest Length  | <b>-3</b> /74%  | Heat Tol      | <b>94</b> /48%   |     |    |

| ABV Type Composite 04/26 |  |  |  | G dtrs | G herds | Rel | 63%        |
|--------------------------|--|--|--|--------|---------|-----|------------|
| Overall Type             |  |  |  |        |         |     | <b>112</b> |
| Mammary Sytem            |  |  |  |        |         |     | <b>108</b> |
| Feet & Legs              |  |  |  |        |         |     | <b>108</b> |
| Dairy Strength           |  |  |  |        |         |     | <b>107</b> |
| Rump                     |  |  |  |        |         |     | <b>107</b> |

| Type 04/26   |             |                    |              | G dtrs            | G herds      | Rel | 63% |
|--------------|-------------|--------------------|--------------|-------------------|--------------|-----|-----|
| Stature      | <b>107</b>  | Pin Set            | <b>102 H</b> | Fore Attach       | <b>102</b>   |     |     |
| Bone Quality | <b>98 C</b> | Loin Strength      | <b>106</b>   | Rear Udder Height | <b>107</b>   |     |     |
| Angularity   | <b>100</b>  | Heel Depth         | <b>104</b>   | Rear Udder Width  | <b>108</b>   |     |     |
| Muzzle Width | <b>110</b>  | Rear Leg Set       | <b>101 C</b> | Centre Ligament   | <b>103</b>   |     |     |
| Body Depth   | <b>103</b>  | Rear Leg Rear View | <b>112</b>   | Teat Place Front  | <b>105 O</b> |     |     |
| Chest Width  | <b>107</b>  | Udder Texture      | <b>101</b>   | Teat Place Rear   | <b>102 C</b> |     |     |
| Pin Width    | <b>105</b>  | Udder Depth        | <b>104 O</b> | Teat Length       | <b>92</b>    |     |     |

- Outcross pedigree, from the same cow family as TWITTER, TINAMBA and AUTOBOT
- Offers high milk yield and excellent total milk solids
- Ideal for grazing and cross breeding programs

# TINAMBA

Varley x Letsgo

## Wilara Tinamba

**Bull ID:** TINAMBA  
**Nasis:** 12FFVR6

**Sire:** Carenda Varley  
**Dam:** Wilara Letsgo Tiffany ET VG85

**Herdbook:** 2202857  
**Breeder:** Wilara Holsteins, Tinamba, VIC

**Haplotype:** HH1F HH2F HH3F HH4F HH5F HH6F  
**Casein:** A12 AB  
**Genetic Code:** MWF

|                |                |                |                |
|----------------|----------------|----------------|----------------|
| <b>\$BPI</b>   | <b>HWI</b>     | <b>SI</b>      | <b>ASI</b>     |
| <b>576/69%</b> | <b>401/66%</b> | <b>766/66%</b> | <b>334/79%</b> |



| ABV 04/26  |                   |              |                 | G dtrs        | G herds         | RIP | G% |
|------------|-------------------|--------------|-----------------|---------------|-----------------|-----|----|
| Protein kg | <b>27</b> /79%    | Milk Speed   | <b>102</b> /70% | Cell Count    | <b>133</b> /69% |     |    |
| Protein %  | <b>0.46%</b> /79% | Temp         | <b>104</b> /70% | Mastitis Res  | <b>103</b> /62% |     |    |
| Milk L     | <b>124</b> /79%   | Survival     | <b>104</b> /65% | Daughter Fert | <b>101</b> /65% |     |    |
| Fat kg     | <b>22</b> /79%    | Calving Ease | <b>101</b> /97% | Feed Saved    | <b>-44</b> /44% |     |    |
| Fat %      | <b>0.25%</b> /79% | Gest Length  | <b>2</b> /98%   | Heat Tol      | <b>91</b> /48%  |     |    |

| ABV Type Composite 04/26 |  |  |  | G dtrs | G herds | Rel | 66%        |
|--------------------------|--|--|--|--------|---------|-----|------------|
| Overall Type             |  |  |  |        |         |     | <b>111</b> |
| Mammary Sytem            |  |  |  |        |         |     | <b>107</b> |
| Feet & Legs              |  |  |  |        |         |     | <b>101</b> |
| Dairy Strength           |  |  |  |        |         |     | <b>104</b> |
| Rump                     |  |  |  |        |         |     | <b>104</b> |

| Type 04/26   |             |                    |              | G dtrs            | G herds      | Rel | 66% |
|--------------|-------------|--------------------|--------------|-------------------|--------------|-----|-----|
| Stature      | <b>109</b>  | Pin Set            | <b>100 H</b> | Fore Attach       | <b>103</b>   |     |     |
| Bone Quality | <b>99 C</b> | Loin Strength      | <b>105</b>   | Rear Udder Height | <b>105</b>   |     |     |
| Angularity   | <b>101</b>  | Heel Depth         | <b>103</b>   | Rear Udder Width  | <b>101</b>   |     |     |
| Muzzle Width | <b>100</b>  | Rear Leg Set       | <b>99 C</b>  | Centre Ligament   | <b>108</b>   |     |     |
| Body Depth   | <b>101</b>  | Rear Leg Rear View | <b>101</b>   | Teat Place Front  | <b>105 O</b> |     |     |
| Chest Width  | <b>101</b>  | Udder Texture      | <b>104</b>   | Teat Place Rear   | <b>100 C</b> |     |     |
| Pin Width    | <b>108</b>  | Udder Depth        | <b>105 O</b> | Teat Length       | <b>105</b>   |     |     |

- Ideal balance of Type and Production
- High Performance sire with improved milk solids and milk components
- Offers ideal rumps, added Dairy Strength and improved Teat Length

# TOMMYDEE Endgame x Alltime

## Hindlee Tommy Dee 20 10-ET

**Bull ID:** TOMMYDEE **Sire:** Winaview Superhero Avenger **Herdbook:** 2125339 **Haplotype:** HH1F HH2F HH3F HH4F HH5F HH6F **Casein:** A22 AB  
**Nasis:** 12FFTL0 **Dam:** Hindlee Royal Alltime 17069 GP81 **Breeder:** Hindlee Holsteins, Smithton, TAS **Genetic Code:** MWF

|                |                |                |                |
|----------------|----------------|----------------|----------------|
| <b>\$BPI</b>   | <b>HWI</b>     | <b>SI</b>      | <b>ASI</b>     |
| <b>623/87%</b> | <b>570/81%</b> | <b>751/84%</b> | <b>245/98%</b> |



| ABV 04/26 <small>358 dtrs 37 herds RIP 30%</small> |                   |              |                 |
|--|-------------------|--------------|-----------------|
| Protein kg   | <b>17</b> /98%    | Milk Speed   | <b>102</b> /87% |
| Protein %  | <b>0.31%</b> /98% | Temp         | <b>103</b> /87% |
| Milk L   | <b>24</b> /98%    | Survival     | <b>107</b> /83% |
| Fat kg   | <b>20</b> /98%    | Calving Ease | <b>101</b> /96% |
| Fat %  | <b>0.27%</b> /98% | Gest Length  | <b>1</b> /98%   |
| Cell Count   | <b>126</b> /92%   | Mastitis Res | <b>103</b> /68% |
| Daughter Fert                                      | <b>109</b> /71%   | Feed Saved   | <b>-9</b> /59%  |
| Heat Tol   | <b>102</b> /48%   |              |                 |

| ABV Type Composite 04/26 <small>90 dtrs 19 herds Rel 92%</small> |  |  |            |
|--|--|--|------------|
| Overall Type   |  |  | <b>107</b> |
| Mammary Sytem  |  |  | <b>108</b> |
| Feet & Legs  |  |  | <b>103</b> |
| Dairy Strength   |  |  | <b>100</b> |
| Rump   |  |  | <b>103</b> |

| Type 04/26 <small>148 dtrs 16 herds Rel 92%</small> |              |                    |              |
|---|--------------|--------------------|--------------|
| Stature   | <b>101</b>   | Pin Set            | <b>103 H</b> |
| Bone Quality  | <b>101 C</b> | Loin Strength      | <b>97</b>    |
| Angularity  | <b>94</b>    | Heel Depth         | <b>103</b>   |
| Muzzle Width  | <b>103</b>   | Rear Leg Set       | <b>100 C</b> |
| Body Depth  | <b>98</b>    | Rear Leg Rear View | <b>102</b>   |
| Chest Width   | <b>104</b>   | Udder Texture      | <b>101</b>   |
| Pin Width   | <b>100</b>   | Udder Depth        | <b>105 O</b> |
| Fore Attach   | <b>103</b>   | Rear Udder Height  | <b>108</b>   |
| Rear Udder Width                                    | <b>105</b>   | Centre Ligament    | <b>104</b>   |
| Teat Place Front                                    | <b>104 O</b> | Teat Place Rear    | <b>102 C</b> |
| Teat Length   | <b>94</b>    |                    |              |

- Adding reliability with milking daughters
- Fertility and Udder Health are a feature of TOMMYDEE
- Breeding highly functional daughters of moderate stature and adequate strength

# TWITTER Hermes x Lambda

## Wilara Twitter

**Bull ID:** TWITTER **Sire:** Peak Hermes **Herdbook:** 2169919 **Haplotype:** HH1F HH2F HH3F HH4F HH5C HH6F **Casein:** A22 BB  
**Nasis:** 12FFUR3 **Dam:** Gorbro Lambdoor Tiffany EX90-1E **Breeder:** Wilara Holsteins, Tinamba, VIC **Genetic Code:** MWF

|                |                |                |                |
|----------------|----------------|----------------|----------------|
| <b>\$BPI</b>   | <b>HWI</b>     | <b>SI</b>      | <b>ASI</b>     |
| <b>659/69%</b> | <b>525/65%</b> | <b>769/66%</b> | <b>306/79%</b> |



| ABV 04/26 <small>4 dtrs 2 herds RIP 100%</small> |                   |              |                 |
|--|-------------------|--------------|-----------------|
| Protein kg                                       | <b>11</b> /79%    | Milk Speed   | <b>102</b> /71% |
| Protein %  | <b>0.33%</b> /79% | Temp         | <b>102</b> /71% |
| Milk L   | <b>-238</b> /79%  | Survival     | <b>104</b> /61% |
| Fat kg   | <b>35</b> /79%    | Calving Ease | <b>101</b> /95% |
| Fat %  | <b>0.65%</b> /79% | Gest Length  | <b>-2</b> /97%  |
| Cell Count                                       | <b>138</b> /69%   | Mastitis Res | <b>105</b> /60% |
| Daughter Fert                                    | <b>105</b> /63%   | Feed Saved   | <b>-33</b> /44% |
| Heat Tol   | <b>95</b> /48%    |              |                 |

| ABV Type Composite 04/26 <small>2 dtrs 1 herds Rel 64%</small> |  |  |            |
|--|--|--|------------|
| Overall Type   |  |  | <b>112</b> |
| Mammary Sytem  |  |  | <b>108</b> |
| Feet & Legs  |  |  | <b>105</b> |
| Dairy Strength   |  |  | <b>103</b> |
| Rump   |  |  | <b>110</b> |

| Type 04/26 <small>G dtrs G herds Rel 64%</small> |              |                    |              |
|--|--------------|--------------------|--------------|
| Stature  | <b>103</b>   | Pin Set            | <b>109 O</b> |
| Bone Quality                                     | <b>95 C</b>  | Loin Strength      | <b>107</b>   |
| Angularity                                       | <b>100</b>   | Heel Depth         | <b>106</b>   |
| Muzzle Width                                     | <b>102</b>   | Rear Leg Set       | <b>96 O</b>  |
| Body Depth                                       | <b>101</b>   | Rear Leg Rear View | <b>103</b>   |
| Chest Width                                      | <b>104</b>   | Udder Texture      | <b>96</b>    |
| Pin Width  | <b>108</b>   | Udder Depth        | <b>109 S</b> |
| Fore Attach                                      | <b>108</b>   | Rear Udder Height  | <b>112</b>   |
| Rear Udder Width                                 | <b>104</b>   | Centre Ligament    | <b>99</b>    |
| Teat Place Front                                 | <b>101 O</b> | Teat Place Rear    | <b>97 C</b>  |
| Teat Length                                      | <b>94</b>    |                    |              |

- Popular choice with favourable Stature to Strength ratio
- The desired balance of Production, Dairy Strength and Overall Type
- Impressive management traits with short gestation length & calving ease

# VARLEY Pemberton x Superhero

## Carenda Varley

**Bull ID:** VARLEY **Sire:** Carenda Pemberton  
**Nasis:** 12FFTL2 **Dam:** Carenda Superhero Verlo VG88

**Herdbook:** 2121933 **Haplotype:** HH1F HH2F HH3F HH4F HH5F HH6F  
**Breeder:** Carenda Holsteins, Boyanup, WA

|                |                |                |                |
|----------------|----------------|----------------|----------------|
| <b>\$BPI</b>   | <b>HWI</b>     | <b>SI</b>      | <b>ASI</b>     |
| <b>476/93%</b> | <b>346/88%</b> | <b>647/88%</b> | <b>280/99%</b> |

**Casein:** A22 BB  
**Genetic Code:** MWC



| ABV 04/26     |                    | 1417 dtrs 121 herds RIP 46% |                 |
|---------------|--------------------|-----------------------------|-----------------|
| Protein kg    | <b>36</b> /99%     | Milk Speed                  | <b>99</b> /97%  |
| Protein %     | <b>0.43%</b> /99%  | Temp                        | <b>104</b> /97% |
| Milk L        | <b>475</b> /99%    | Survival                    | <b>104</b> /94% |
| Fat kg        | <b>7</b> /99%      | Calving Ease                | <b>100</b> /99% |
| Fat %         | <b>-0.19%</b> /99% | Gest Length                 | <b>3</b> /99%   |
| Cell Count    | <b>128</b> /97%    | Mastitis Res                | <b>102</b> /87% |
| Daughter Fert | <b>103</b> /86%    | Feed Saved                  | <b>-86</b> /61% |
| Heat Tol      | <b>90</b> /48%     |                             |                 |

| ABV Type Composite 04/26 |  | 434 dtrs 39 herds Rel 97% |            |
|--------------------------|--|---------------------------|------------|
| Overall Type             |  |                           | <b>107</b> |
| Mammary Sytem            |  |                           | <b>108</b> |
| Feet & Legs              |  |                           | <b>97</b>  |
| Dairy Strength           |  |                           | <b>104</b> |
| Rump                     |  |                           | <b>102</b> |

| Type 04/26       |              | 399 dtrs 36 herds Rel 97% |              |
|------------------|--------------|---------------------------|--------------|
| Stature          | <b>107</b>   | Pin Set                   | <b>96 H</b>  |
| Bone Quality     | <b>97 C</b>  | Loin Strength             | <b>104</b>   |
| Angularity       | <b>102</b>   | Heel Depth                | <b>94</b>    |
| Muzzle Width     | <b>103</b>   | Rear Leg Set              | <b>101 C</b> |
| Body Depth       | <b>102</b>   | Rear Leg Rear View        | <b>100</b>   |
| Chest Width      | <b>102</b>   | Udder Texture             | <b>104</b>   |
| Pin Width        | <b>108</b>   | Udder Depth               | <b>102 O</b> |
| Fore Attach      | <b>100</b>   | Rear Udder Height         | <b>104</b>   |
| Rear Udder Width | <b>104</b>   | Centre Ligament           | <b>109</b>   |
| Teat Place Front | <b>107 O</b> | Teat Place Rear           | <b>105 C</b> |
| Teat Length      | <b>109</b>   |                           |              |

- Will not disappoint with close to 1,500 milking daughters
- Reliable production improver with great farmer satisfaction
- The complete package and Sire of Sons

# ZEPHYR Decipher x AltaMagnifique

## Summit View Zephyr-IMP-ET

**Bull ID:** ZEPHYR **Sire:** Calister Decipher  
**Nasis:** 12FFXK1 **Dam:** Peak Zestful 7305-ET

**Herdbook:** 2273648 **Haplotype:** HH1F HH2F HH3F HH4F HH5F HH6F  
**Breeder:** Genetics Australia, Camperdown, VIC

|                |                |                |                |
|----------------|----------------|----------------|----------------|
| <b>\$BPI</b>   | <b>HWI</b>     | <b>SI</b>      | <b>ASI</b>     |
| <b>600/67%</b> | <b>472/63%</b> | <b>693/65%</b> | <b>235/78%</b> |

**Casein:** A22 AB  
**Genetic Code:** MWF



| ABV 04/26     |                   | G dtrs G herds RIP G% |                 |
|---------------|-------------------|-----------------------|-----------------|
| Protein kg    | <b>16</b> /78%    | Milk Speed            | <b>102</b> /69% |
| Protein %     | <b>0.29%</b> /78% | Temp                  | <b>102</b> /69% |
| Milk L        | <b>15</b> /78%    | Survival              | <b>105</b> /62% |
| Fat kg        | <b>20</b> /78%    | Calving Ease          | <b>100</b> /76% |
| Fat %         | <b>0.27%</b> /78% | Gest Length           | <b>0</b> /70%   |
| Cell Count    | <b>136</b> /68%   | Mastitis Res          | <b>105</b> /56% |
| Daughter Fert | <b>105</b> /61%   | Feed Saved            | <b>-65</b> /43% |
| Heat Tol      | <b>100</b> /48%   |                       |                 |

| ABV Type Composite 04/26 |  | G dtrs G herds Rel 64% |            |
|--------------------------|--|------------------------|------------|
| Overall Type             |  |                        | <b>114</b> |
| Mammary Sytem            |  |                        | <b>109</b> |
| Feet & Legs              |  |                        | <b>102</b> |
| Dairy Strength           |  |                        | <b>106</b> |
| Rump                     |  |                        | <b>109</b> |

| Type 04/26       |              | G dtrs G herds Rel 64% |              |
|------------------|--------------|------------------------|--------------|
| Stature          | <b>109</b>   | Pin Set                | <b>105 H</b> |
| Bone Quality     | <b>101 C</b> | Loin Strength          | <b>111</b>   |
| Angularity       | <b>103</b>   | Heel Depth             | <b>104</b>   |
| Muzzle Width     | <b>100</b>   | Rear Leg Set           | <b>100 C</b> |
| Body Depth       | <b>102</b>   | Rear Leg Rear View     | <b>99</b>    |
| Chest Width      | <b>102</b>   | Udder Texture          | <b>101</b>   |
| Pin Width        | <b>106</b>   | Udder Depth            | <b>110 S</b> |
| Fore Attach      | <b>109</b>   | Rear Udder Height      | <b>105</b>   |
| Rear Udder Width | <b>106</b>   | Centre Ligament        | <b>105</b>   |
| Teat Place Front | <b>105 O</b> | Teat Place Rear        | <b>102 C</b> |
| Teat Length      | <b>98</b>    |                        |              |

- Combines superior Type and Production with desirable management traits
- Bred by reliable Australian genetics from the Peak breeding program
- An elite NEW sire from every angle for every herd !

# BEEF BREEDS FROM AUSTRALIA

Australia has a diverse range of beef breeds available for use on beef to beef and also for beef on dairy. The availability of bulls and breeds changes from time to time and eligibility can vary from country to country but if you are interested to explore what Australian beef breeds are available or to obtain current performance data on bulls please contact us.

## ANGUS



Waitara **QUIDDITCH Q43**



Allendale **TRUE BLUE T325**



Warrawee **PATROL P29**

## SPECKLE PARK



Black Wolf **THERMAL OPTICS PP**



The Points **STORM PP**



Yulong **TRIFECTA T0030**

## WAGYU

## HEREFORD



Wirruna **PATON P048 PP**

## SIMMENTAL



Wongalea **PEDRO P007**

## BRAHMAN



Tarramba **QUARTERBACK 3383**

Contact Rob Derksen on [robert.derksen@genaust.com.au](mailto:robert.derksen@genaust.com.au)

# TYPE ABVs

**Type – or conformation – affects a cow’s functional performance in the dairy herd, so many dairy farmers consider type in their breeding decisions. Australian Breeding Values (ABVs) for type are a tool for breeding for improved type.**

## Breeding for improved type

DataGene publishes ABVs for more than 20 individual type traits, which are sometimes referred to as ‘linears’.

Dairy farmers are often more interested in a group of traits which combine to affect a cow’s functional performance in the herd. An ABV based on a combination of traits is referred to as a ‘composite’ trait. DataGene publishes ABVs for five composite type traits: Overall Type, Mammary System, Feet & Legs, Dairy Strength and Rump.

## Using Type ABVs

Type ABVs are expressed against the base (the average of a group of animals within a defined birth year range, that serves as a comparison point). The base is set at 100 with a standard deviation set to 5; for example, an ABV of 105 is 1 standard deviation above average.

For many traits, an ABV of greater than 100 indicates an animal that is better than the breed average for that particular type trait. Take for example, fore udder attachment. A stronger fore udder attachment is desirable because it has a strong association with longevity in Holstein and Jersey cows. The optimum or ‘ideal’ is therefore very strong fore attachment.

– To improve fore udder attachment: choose bulls with an ABV of greater than 100.

The same applies to the composite traits Mammary System, Feet & Legs, Dairy Strength and Rump and Overall Type.

Australian breed associations set the ideals for each type trait.

## Intermediate optimums

More is not always better. For some traits the ideal is an intermediate score.

An example is rear teat placement, which refers to the position of rear teats relative to the centre of the quarter. Rear teat placement affects the ease with which cups can be attached in the milking shed. Neither extreme is desirable: cups are difficult to attach if rear teats are too close or too wide. The optimum position is intermediate. A bull with a Rear Teat Placement ABV of 100 may represent the breed average but the optimum for the trait may be different.

Since December 2025, DataGene has enhanced the way it expresses six traits with intermediate optimums:

1. Pin Set
2. Rear Set
3. Udder Depth
4. Teat Placement Fore
5. Teat Placement Rear
6. Bone Quality

The way these ABVs are calculated has not changed. The change in expression just makes it easier for breeders to recognise animals that are close to the intermediate optimum.

The change involved including a letter after the breeding value. The letter indicates if the ABV is within the optimum range (O) or an alternative letter indicating the trait direction.

## Information behind type ABVs

Type is recorded by trained classifiers who visit farms and assess cows individually based on the biological range of each type trait.

Results for individual traits are referred to as Linear Type scores. A final score is then allocated based on how closely the combination of the individual linear scores reflect the breed society’s definition of the ideal cow.

## Overall Type ABV

The Overall Type ABV is based on the final classification score and a combination of the four composite type ABVs. The weightings are set by breed associations.

## Indices: BPI, HWI, SI

Overall Type, Mammary System, Udder Depth and Pin Set are included in Australia’s three indices: Balanced Performance Index (BPI), Health Weighted Index (HWI) and Sustainability Index (SI). The table shows the different weightings of type in DataGene’s Holstein indices.

| Relative emphasis of traits in Holstein breeding indices % |                                  |                             |                           |
|--|----------------------------------|-----------------------------|---------------------------|
|  | Balanced Performance Index [BPI] | Health Weighted Index [HWI] | Sustainability Index [SI] |
| Production [ASI]   | 46%                              | 32%                         | 51%                       |
| Health & Fertility   | 34%                              | 50%                         | 28%                       |
| <b>TYPE</b>  | <b>13%</b>                       | <b>8%</b>                   | <b>10%</b>                |
| Workability  | 3%                               | 3%                          | 2%                        |
| Feed Saved   | 4%                               | 8%                          | 10%                       |

## Sources of information for bull ABVs

Through a bull’s life, the information used in genetic evaluation changes. Before he has any progeny, only pedigree and genomics are used for his breeding value. A bull may have daughters overseas and his Interbull information will be used in any trait where multi-country evaluations (MACE) are available. Overall Type, Mammary System, Feet & Leg Composite and many linear traits include contributions from Interbull for bulls with daughters overseas.

As Australian daughters enter the milking herd, their information will begin to influence the bull’s breeding values. With enough Australian daughters, the most of a bull’s breeding value comes from these Australian records.

# AUSTRALIA'S THREE BREEDING INDICES



## Balanced Performance Index [BPI], Health Weighted Index [HWI] and Sustainability Index [SI]

Australia's three breeding indices – BPI, HWI and Sustainability Index – account for the traits that affect a cow's lifetime contribution to the dairy business: production, health and fertility, longevity, workability, type and feed efficiency. The difference is in the amount of emphasis given to specific traits.

### Why use an index?

Most dairy farmers want to breed to improve more than one trait at once. Breeding Indices take the hard work out of breeding for multiple traits by combining them in a single value. They are based on rigorous scientific analysis and industry priorities.

### Balanced Performance Index (BPI)

The Balanced Performance Index (BPI) is an economic index that drives improvements in the traits that affect lifetime contribution to the farm business: production, health, fertility, longevity, workability, feed efficiency and type. It reflects most farmers' preferences. The BPI is measured in \$, compared with the breed average (or 'base') which is set at zero.

### Health Weighted Index (HWI)

The Health Weighted Index allows farmers to fast-track genetic gain for traits such as fertility, mastitis resistance, calving ease, gestation length and feed saved. The HWI places greater weighting on these traits than the BPI. Breeding for HWI is expected to reduce cow size and show little improvement in production. This is because it places less emphasis on milk yield per cow. The HWI is modelled on a strictly seasonal calving system.

### Sustainability Index

Introduced in August 2022, the Sustainability Index enables farmers to fast-track breeding for reduced greenhouse gas emissions intensity by placing greater emphasis on the traits that contribute to reducing emissions intensity (production, survival and feed saved). The Sustainability Index is a relative ranking of animals expressed as a unit against a base of 0. The higher the Sustainability Index number, the more efficient the animal for emissions intensity. The unit of emissions intensity used in the Sustainability Index is kilograms of carbon dioxide equivalent per kilogram of protein equivalent produced (kg CO<sub>2</sub>-eq/ kg protein-eq). The Sustainability Index is a desired gains index and cannot be directly compared to the BPI or HWI.

### What animals get a BPI, HWI and Sustainability Index?

Genomically tested animals, dairy cows and bulls can receive a BPI, HWI and Sustainability Index if sufficient data is available in DataGene's genetic evaluation system.

### Breed differences

The relative emphasis given to traits in the BPI, HWI and Sustainability Index varies slightly across breeds. For example, the Jersey BPI excludes Feed Saved reflecting differences between breeding objectives (the breed is putting less emphasis on efficiency as the breed has been at the forefront of efficiency).

### Publishing the results

DataGene's genetic evaluation system calculates animals' BPI, HWI, Sustainability Index, Australian Selection Index (ASI) and Australian Breeding Values (ABVs) for individual traits. They are calculated from available information such as genomic results, herd test data, records from on-farm software, classification results and workability reports.

They are updated regularly as more information becomes available. Bulls' BPI, HWI, Sustainability Index and ABVs are published every April, August and December.

### Breed average (the 'base')

Breeding values and indices are relative measures meaning they make more sense when compared to each other or to an average. The average, also known as the 'base' is a clearly defined group of animals to which all others are compared.

In Australia, the average/base is defined as cows of the same breed that were born between 2018 and 2022. It is updated every five years in line with international best practice (Interbull).

The breed average/base for BPI, HWI and Sustainability Index are set at zero. Animals with a negative index value are below average for their breed.

### Don't compare breed BPI, HWI, Sustainability Index values

It is not valid to compare BPI, HWI or Sustainability Index values between breeds. A Holstein animal with a BPI of say 150 is not comparable to a Jersey animal with a BPI of 150. This is because the BPI and HWI values are relative to their breed average (the base).

### Trait weightings by breed

The BPI, HWI and SI each account for the traits that affect a cow's lifetime contribution to the dairy business: production, health and fertility, feed saved, workability and type.

The difference between them is the relative emphasis given to each trait. The HWI is weighted to fast-track genetic gain in fertility and health traits, with production secondary. The Sustainability Index is weighted to fast track genetic gain for reduced emissions intensity.

The relative emphasis given to traits in the indices is consistent across breeds, with the exception of the Jersey BPI which excludes feed saved.

However, breed differences occur when the relative emphasis of traits is expressed as a percentage, for example in a pie chart. Expressing as a percentage accounts for the genetic variability (standard deviation) within the breed; for example, the Australian Holstein breed has more genetic variation for fertility than Jerseys and it is therefore easier to improve fertility in Holsteins. The pie charts show the relative emphasis of traits used for the Holstein breed for BPI, HWI and SI from November 2025.

# UNDERSTANDING THE ABVS

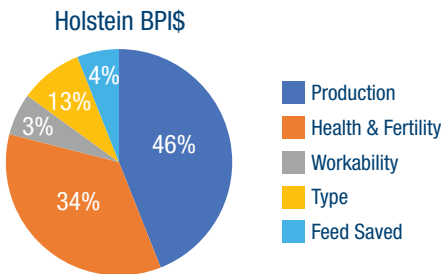
Australia has three breeding indices, the Balanced Performance Index [BPI], the Health Weighted Index [HWI] and the Sustainability Index [SI]. The \$BPI is an economic Index and blends production, type, and health traits according to their economic values. It is the index most used by farmers while the HWI is used by farmers in a seasonal calving system and fast tracks fertility, mastitis resistance and feed saved improvement.

The new Sustainability Index is a breeding tool to help dairy farmers fast track genetic gain breeding for reduced greenhouse emissions intensity. This index places greater emphasis on traits that contribute to reducing emissions such as feed saved and survival while also considering production, health fertility type and workability traits. periodically and reflects the cows milking on today's herds.

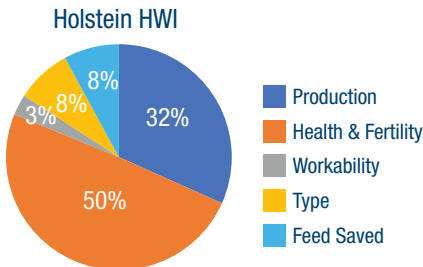
The BPI, is expressed in dollar units with the breed average set at 0 while the HWI and SI is measured in units with the breed average set at 0. ABVs cannot be compared between breeds, only within breed and are relative measures, they make more sense when compared to each other to an average.

The average is defined as the average of cows born between 2018-2022. It is updated every 5 years and reflects the cow milking in today's herds.

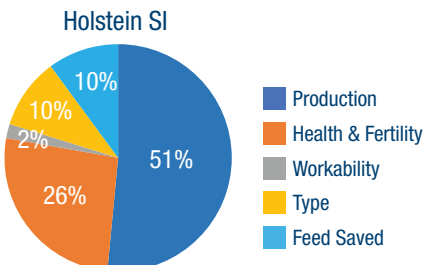
## A BALANCED PERFORMANCE INDEX [BPI]



## B HEALTH WEIGHTED INDEX [HWI]



## C SUSTAINABILITY INDEX [SI]



## D PRODUCTION ABV

Production traits are expressed in their units of measurement from a rolling base of 0, which represents the average cow currently milking in Australia. The reliability figure is an estimate of potential proof change based on the number of daughters, herds, test days and genomic data. The higher the reliability of a trait, the lower the chance of proof movement.

## E AUSTRALIAN SELECTION INDEX [ASI]

Like the BPI, the ASI is expressed as a dollar value. This production based index is weighted using a similar ratio of milk:fat:protein to what most Australian dairy farmers are paid for their milk. Index weightings are as follows: (7.95 x Protein kg ABV) + (5.67 x Fat kg ABV) - (0.09 x Milk ABV).

## F WORKABILITY TRAITS

These are calculated from information provided by Australian farmers who participate in a recognised herd recording program. They are expressed as a percentage deviating (+/-) from the base (average) of 100. In this example, 102 for milking speed indicates that the bull is 2% above average for this trait i.e. his daughters on average milk faster. The reliability percentage is generated from the number of daughters and contemporaries scored and the number of herds.

- For production traits, feed saved, gestation length and indices the average is set at 0.
- For type, health and management traits the average is set at 100.
- A BPIg represents a genomic breeding value and a reliability figure is shown for all traits.

Trait weighting in the \$BPI, HWI and SI have differences between breeds.

## G CELL COUNT

The Cell Count ABV is useful to breed cows with lower cell counts, thereby reducing a herd's bulk milk cell count. Milk payments are penalised for farms with high bulk milk cell counts. Bulls with breeding values above 100 will improve your bulk milk cell count.

## H MASTITIS RESISTANCE

The Mastitis Resistance ABV draws upon three sets of information to provide a breeding value for selection to improve mastitis resistance: 305-day somatic cell count, udder depth and clinical mastitis records. This combination delivers an ABV that directly targets mastitis, whereas the Cell Count ABV has been used as an indirect selection criterion for mastitis resistance. Mastitis Resistance is improved by using bulls above 100.

## I DAUGHTER FERTILITY

The Daughter Fertility ABV is calculated using Non Return Rate data as well as re-calving date. Bulls with Daughter fertility ABVs greater than 100 will improve Daughter Fertility. A bull with an ABV of 104 is 4% better than the average bull and will deliver on average a 2% improvement in 6 week Non Return Rate.

## J GESTATION LENGTH

The Gestation Length ABV is expressed as the number of days of gestation more, or less, than an average of 0. Bulls with a Gestation Length ABV of less than 0 have a shorter Gestation Length than the average. One ABV unit represents about 1 day shorter gestation. As half the genes come from the bull, a bull with a Gestation Length ABV of -8 would have calves that are expected to be born 4 days earlier than the due date.

# ILLUMINATOR A2P2 x Delta

## Numeralla A2P2 Illuminator P-ET

**Bull ID:** ILLUMINATOR

**Sire:** Vogue A2P2

**Herdbook:** 2198606

**Haplotype:** HH1F HH2F HH3F HH4F HH5F HH6F

**Casein:** A22 BB

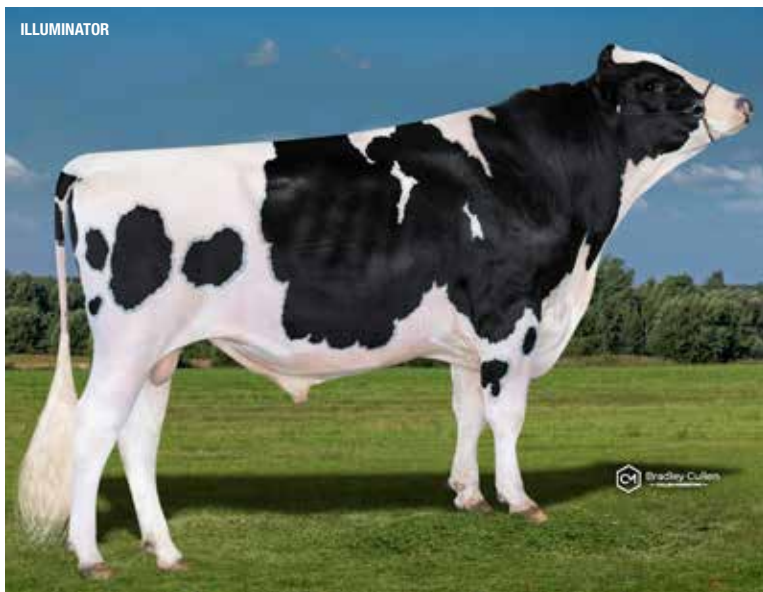
**Nasis:** 12FFVR2

**Dam:** Numeralla Delta 1427 VG85

**Breeder:** Numeralla Dairy Company, Grassmere, VIC

**Genetic Code:** POC MWF

|                |              |             |              |
|----------------|--------------|-------------|--------------|
| <b>A</b> \$BPI | <b>B</b> HWI | <b>C</b> SI | <b>E</b> ASI |
| 644/69%        | 448/66%      | 707/66%     | 367/79%      |



- Balanced proof and an easy bull to add to any breeding program
- Ideal option for improved Dairy Strength, strong Rumps and snug Udders
- Extreme Fat and Protein % improver

|                             |                               |                                 |
|-----------------------------|-------------------------------|---------------------------------|
| <b>ABV 04/26</b> <b>D</b>   | 1 dtrs 1 herds RIP 100%       |                                 |
| Protein kg <b>11</b> /79%   | Milk Speed <b>F 102</b> /70%  | Cell Count <b>G 132</b> /70%    |
| Protein % <b>0.45%</b> /79% | Temp <b>101</b> /70%          | Mastitis Res <b>H 104</b> /58%  |
| Milk L <b>-467</b> /79%     | Survival <b>L 102</b> /64%    | Daughter Fert <b>I 103</b> /65% |
| Fat kg <b>41</b> /79%       | Calving Ease <b>K 01</b> /98% | Feed Saved <b>N -130</b> /44%   |
| Fat % <b>0.88%</b> /79%     | Gest Length <b>J -1</b> /99%  | Heat Tol <b>M 99</b> /48%       |

|  |                        |            |
|--|------------------------|------------|
| <b>ABV Type Composite 04/26</b> <b>O</b> | G dtrs G herds Rel 65% |            |
| Overall Type                             |                        | <b>112</b> |
| Mammary Sytem                            |                        | <b>112</b> |
| Feet & Legs                              |                        | <b>102</b> |
| Dairy Strength                           |                        | <b>105</b> |
| Rump                                     |                        | <b>105</b> |

|                           |                               |                               |  |
|---------------------------|-------------------------------|-------------------------------|--|
| <b>Type 04/26</b>         | G dtrs G herds Rel 65%        |                               |  |
| Stature <b>106</b>        | Pin Set <b>105 H</b>          | Fore Attach <b>108</b>        |  |
| Bone Quality <b>104 0</b> | Loin Strength <b>105</b>      | Rear Udder Height <b>110</b>  |  |
| Angularity <b>105</b>     | Heel Depth <b>102</b>         | Rear Udder Width <b>110</b>   |  |
| Muzzle Width <b>104</b>   | Rear Leg Set <b>101 C</b>     | Centre Ligament <b>108</b>    |  |
| Body Depth <b>102</b>     | Rear Leg Rear View <b>107</b> | Teat Place Front <b>102 0</b> |  |
| Chest Width <b>100</b>    | Udder Texture <b>103</b>      | Teat Place Rear <b>106 C</b>  |  |
| Pin Width <b>103</b>      | Udder Depth <b>108 S</b>      | Teat Length <b>99</b>         |  |

### **K** CALVING EASE

The Calving Ease ABV is based on pedigree data, genomic data calving ease scores and calf size supplied in reports from farmers. Easier calving sires have figures greater than 100.

### **L** SURVIVAL

Survival is a measurement of the bull's daughters' ability to last in the herd. Bulls with ratings greater than 100 breed daughters that are likely to last longer in the herd.

### **M** HEAT TOLERANCE

The Heat Tolerance ABV describes an animals ability to maintain production during hot and humid conditions. Animals with higher Heat Tolerance ABV's are less likely to suffer production drops in hot weather.

### **N** FEED SAVED

Feed Saved is Australia's Feed Conversion Efficiency breeding value. It combines genomic data with estimates of maintenance requirements to predict the feed intake of a bulls daughters. It is expressed as kgs of feed saved per lactation. E.g. if a bull has an ABV of 100, then on average his daughters will eat 100 kgs less of feed than the daughters of an average (0) bull. If a bull has an ABV of -50, then this bulls daughters will eat 50 kgs more feed than daughter of the average bull.

### **O** TYPE

Type ABVs describe the conformation of a bulls daughters. DataGene publishes Type ABVs for twenty-two linear traits and composite traits including Overall Type, Mammary System, Feet & Legs, Rump and Dairy Strength. Composites combine individual type traits and reflect the trait weightings and ideals set by breed organisations. For Composite Type ABVs, the average is 100 and one standard deviation is set to 5. To improve type composites, use bulls with ABVs more than 100. For individual Type ABVs, consider the ideal for that trait, the average linear for that trait, and the direction for breeding.



DataGene is an independent and industry-owned organisation responsible for driving genetic gain and herd improvement in the Australian dairy industry.

DataGene performs pre-competitive herd improvement functions such as genetic evaluation, herd testing and herd improvement software development and data systems.

DataGene is a Dairy Australia and industry collaboration.

[www.datagene.com.au](http://www.datagene.com.au) E: [enquiries@datagene.com.au](mailto:enquiries@datagene.com.au)

**Genetics Australia Holdings Limited**  
Bacchus Marsh, Victoria, Australia, 3340

**Production Centres:**  
Camperdown, Victoria, Australia, 3260  
Glenormiston, Victoria, Australia, 3265

**Export Manager | Rob Derksen**

+61 418 129 606  
robert.derksen@genaust.com.au

