

# 2023 HOLSTEIN SIRE CATALOGUE



# CONTENTS

## AUSTRALIAN HOLSTEINS

10	PEMBERTON	
11	A2P2	AMALFI
12	AUTOBOT	CFP
13	CINDERMAN	DECIPHER
14	DETLEV	EASTERN
15	ENDGAME	GILES
16	JOLET	JOLO
17	JOPPO	JOVIAL
18	KITAMIPP	LASTIN
19	LEMONADE	LOWRIDER
24	MAEBULL	NIPIT
25	OMG	PILBARA
26	REDGATE	RIZHAT
27	RIZMAN	SILVERLINE
28	STARMAGIC	SUPERDAVE
29	SUPERDEW	SUPERPOWER
30	TALKING	TIRANO
31	TOMMYDEE	VARLEY
32	VISSLA	VITTORIA
33	YOLO	

## WINTER 2023 RELEASE SIRES

33	ILLUMINATOR	FENDER
----	-------------	--------

## INTERNATIONAL HOLSTEINS

36	A2P2 PP	CFP PP RC	ESCHER PP	GONE PP
37	KITAMI PP	LEMONADE PP	NIPIT PP	EMMETT P
38	DAVIS	GUTHRIE	JAGGER	SECRETARIAT

### Genetics Australia Co-operative Ltd and all affiliates - Catalogue Disclaimer Statement

**Disclaimer:** The content of this Catalogue is provided for information only. It is published with care and attention to accuracy, nevertheless Genetics Australia Co-operative Ltd and all affiliates (GAC) accepts no liability if, for any reason the information is inaccurate or out of date whether negligent or otherwise.

**Limitation of Liability:** GAC warrants that it has clear title to the products sold and that all semen processed in its laboratory is processed under rigid quality controls. Since GAC does not control conditions under which its products are used it does not give, and its agents and employees are forbidden to give, any warranty expressed or implied as to the conception rate or productiveness or the results which may be obtained by the use of any product sold or in connection with any techniques recommended. GAC makes no other warranty of any kind whatsoever expressed or implied which extends beyond the description of its products. Where so permitted the liability of GAC for breach of a condition or warranty implied by statute is limited at GAC's option to the replacement or repair of the goods or the supply of equivalent goods or the cost of replacing or repairing the goods or of acquiring equivalent goods. So far as the law permits GAC shall not be liable in any way whatsoever for any indirect or consequential loss or loss of profit.

**Sexed (sorted) semen:** Artificial Insemination products (straws) that GAC offers for sale as sexed (sorted) semen using Sexing Technologies proprietary technology, shall only be used for single-use artificial insemination and not for in-vitro-fertilisation or embryo transfer.

**Prices:** All prices listed within this publication are listed exclusive of Goods and Services Tax (GST), so GST will be added at the time of purchase.

**Source data:** Data referencing Australian Breeding Values (ABVs) information unless otherwise stated is sourced from DataGene April 2023 breeding value release. Data referencing United States of America Breeding Values are provided through the Council on Dairy Cattle Breeding (CDCB) this information unless otherwise stated is sourced from CDCB April 2023 breeding value release.

**FRONT COVER:** Image courtesy of Fiona Hanks. Left-Right - Basil, Liam, & Gabe Ryan, Grassmere, Southwest Victoria pictured with Numeralla A2P2 ILLUMINATOR (P).



### MEMBER OFFER

A group of bulls appear with a Member Offer symbol. These bulls are exclusively available at a GA Shareholder price of \$14.00\* per straw, a significant saving on the bulls RRP. The offer is for a limited time and ends 31st July 2023. Maximum of 50 units can be purchased by any one shareholder member.



## WELCOME TO THE APRIL 2023 EDITION OF THE GENETICS AUSTRALIA DAIRY SIRE DIRECTORY...

This April edition of our Dairy Sire Directory is a dedicated Holstein directory and is prepared following the April 2023 ABV release. We trust you find it an informative source of information as it references both local and international sires including breeding values from Australian and USA data sources.

The focus of our breeding and product development continues to be aligned with the key indices and breeding values that are development and published by Datagene along with the demands of our customers. This directory contains an unprecedented number of sires that offer a combination of Polled, A22 and high Daughter Fertility breeding values.

We have a great selection of sires available that we believe will support any breeding goal. The wide selection of sires that now have milking daughters is an absolute standout of this directory.

At \$567 BPI Carenda PILBARA now has milking daughters, he excels for BPI, HWI, ASI (Production), Sustainability Index at 1,146, in each of these indices PILBARA is the Genetics Australia team leader. The GA daughter proven line-up is also complimented by the addition ENDGAME, bred by Winaview Holsteins ENDGAME is sired by Superhero and offers a great combination of BPI at \$424, Overall Type of 108, which in turn delivers strength and capacity to his daughters.

Member Savings are back!!! Save \$6.00 per unit on your purchases of PEMBERTON (available in either Sexed or Conventional semen).

Carenda PEMBERTON now has 247 milking daughters contributing to his first official daughter proven breeding value for production and 142 daughters that contribute to his type assessment ABV. He has a great profile of \$448 BPI, 254 ASI, 933 SI, 104 Mammary, so if you are looking for a great balanced bull and the confidence of reliability, PEMBERTON is an ideal option for you.

This directory also includes a number of new genomic sires, these include VITTORIA a CFP son that offers PP, A22 and is RED. RIZMAN a Manhattan son bred by Emu Banks Holsteins and offers a nice combination of outcross, \$460 BPI, A22, 106 Overall Type, 118 Daughter Fertility and is 102 for Heat Tolerance'. DETLEV is another outcross sire bred by Illawambra Holsteins and offers \$519 BPI, 239 ASI, 967 SI along with many positive management traits. If lower stature with a power of dairy strength and chest width is high on your bull selection you will find no better than new bull LOWRIDER. At \$453 BPI, 110 Daughter Fertility 109 Overall Type, 106 Dairy Strength and an incredible 112 for Chest Width, A22 and outcross, he is bound to be in high demand all year – order early!

Genetics Australia is committed to the sustainability of livestock agriculture through the provision of trusted genetics, products, and services.

### Genetics Australia - Breeding Better Australian Herds...

**Anthony Shelly – CEO, Genetics Australia**



# SUSTAINABILITY INDEX

## ...A BREEDING TOOL FOR A GREENER LOOKING FUTURE



Introduced in August 2022, the Sustainability Index (S.I) is a breeding tool to help dairy farmers fast track genetic gain for reduced emissions intensity.

The Sustainability Index enables dairy farmers to fast-track breeding results for reduced greenhouse gas emissions intensity.

Breeding decisions will complement a range of on-farm management practices to reduce emissions.

“On closer inspection you will find the Sustainability Index (S.I) is strongly correlated to the BPI index with some minor differences and re-rankings between bulls for BPI and S.I.

Traits such as milk production (in the form of protein), Survival, Feed Saved are all traits that have been researched and demonstrate greater genetic gains towards a more sustainable cow for the future.”

- Gerard Brislin, Territory Manager Tasmania.

“We all have a responsibility in varied ways to work towards an improved environmental position... Breeding a sustainable cow for tomorrow will not limit your profitability today or into the future whilst doing our part to look after the environment.

Genetics Australia can assist you and your needs in breeding the Australian cow that is compliant and “Future-Ready”

- Greg Tiller, Territory Manager Northern Victoria.

### Australia's three indices



#### BALANCED PERFORMANCE INDEX (BPI)

- Economic Index
- Blends production, type and health traits according to their economic values
- In line with farmer preferences



#### HEALTH WEIGHTED INDEX (HWI)

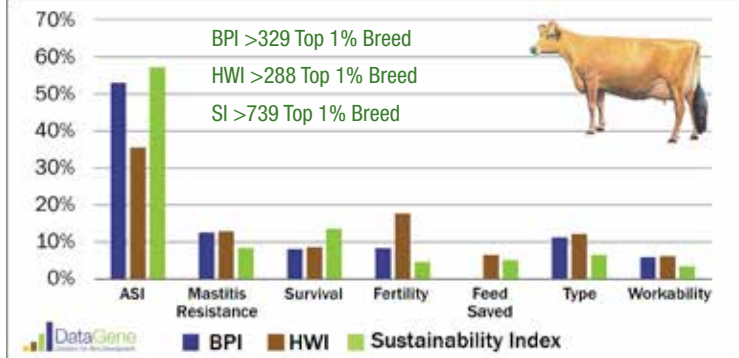
- Fast track fertility, mastitis resistance and feed saved
- Modelled on a strictly seasonal calving system



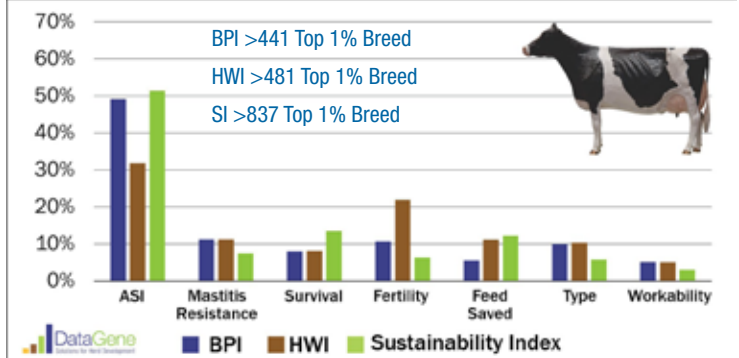
#### SUSTAINABILITY INDEX (SI)

- Fast track genetic gain for lower emissions
- Continue gains for important economic traits

#### TRAIT CONTRIBUTIONS TO INDICES (JERSEYS)



#### TRAIT CONTRIBUTIONS TO INDICES (HOLSTEINS)



#### TRAIT CONTRIBUTIONS TO INDICES (RED BREDS)

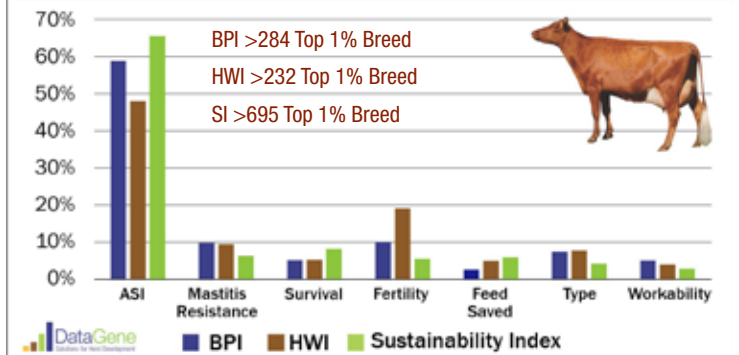


Image source DataGene

# HOLSTEIN TRAIT LEADERS

PROFITABILITY		
Name	BPI	Rel%
PILBARA	567	70
YOLO	558	68
DETLEV	519	66
JOPPO	507	65
VARLEY	504	69
TIRANO	501	70
STARMAGIC	499	65
JOLO	498	67
TOMMYDEE	494	67
OMG	493	65

HEALTH		
Name	HWI	Rel%
PILBARA	569	66
TIRANO	549	65
YOLO	541	65
RIZMAN	535	61
DETLEV	528	60
TALKING	525	62
TOMMYDEE	515	62
RIZHAT	510	60
LASTIN	509	64
JOPPO	506	59

PRODUCTION		
Name	ASI	Rel%
PILBARA	295	75
JOVIAL	271	78
JOLO	270	78
SILVERLINE	268	99
SUPERDAVE	257	99
PEMBERTON	254	96
VARLEY	242	79
DETLEV	239	77
STARMAGIC	237	76
EASTERN	234	76

SUSTAINABILITY INDEX		
Name	Sust. Index	Rel%
PILBARA	1146	67
YOLO	1037	66
DETLEV	967	63
PEMBERTON	933	84
JOLO	926	64
VARLEY	914	66
AUTOBOT	898	65
STARMAGIC	897	62
JOPPO	881	63
NIPIT	864	64

CONFORMATION			
Name	Type	Mam	Rel%
DECIPHER	111	109	65
YOLO	110	111	69
VARLEY	109	110	67
LOWRIDER	109	104	61
SILVERLINE	108	113	98
AMALFI	108	107	65
RIZHAT	108	107	62
ENDGAME	108	105	81
EASTERN	108	105	61
LASTIN	107	108	66

CALVING EASE		
Name	Calving Ease	Rel%
JOLO	105	73
EASTERN	105	70
TOMMYDEE	105	89
STARMAGIC	104	66
GILES	104	98
RIZHAT	104	69
VISSLA	104	72
PILBARA	104	96
JOPPO	103	71
CFP	103	98

GESTATION LENGTH		
Name	Gest	Rel%
STARMAGIC	-8	62
TIRANO	-8	99
CINDERMAN	-8	66
GILES	-8	99
JOPPO	-7	63
JOLO	-7	69
EASTERN	-7	62
KITAMIPP	-6	91
CFP	-6	99
RIZMAN	-5	61

MASTITIS RES.		
Name	M. Res	Rel%
RIZHAT	112	66
YOLO	110	65
LASTIN	110	72
AMALFI	110	71
TALKING	109	69
DECIPHER	109	72
STARMAGIC	109	66
TIRANO	108	72
TOMMYDEE	108	72
JOPPO	108	66

DAIRY STRENGTH		
Name	Dairy Strg	Rel%
EASTERN	108	61
GILES	107	85
LOWRIDER	106	61
ENDGAME	105	81
VARLEY	105	67
AMALFI	104	65
DECIPHER	103	65
PILBARA	102	68
SUPERPOWER	102	80
MAEBULL	102	99

DAUGHTER FERTILITY		
Name	Dtr Fert	Rel%
RIZMAN	118	57
VISSLA	116	52
REDGATE	116	53
PILBARA	115	66
AMALFI	114	65
JOLO	114	54
TALKING	114	55
TIRANO	114	65
EASTERN	113	54
CINDERMAN	113	63

FEED SAVED		
Name	Feed Saved	Rel%
DETLEV	45	42
TIRANO	32	45
TOMMYDEE	31	44
SUPERDEW	27	42
TALKING	21	44
MAEBULL	10	62
OMG	-2	42
DECIPHER	-4	44
REDGATE	-8	44
CFP	-8	44

POLLED		
Name	BPI	Rel%
OMG PP	493	65
CFP PP RC	455	68
VITTORIA PP RED	439	66
NIPIT PP RC	430	67
LEMONADE PP	417	66
KITAMI PP RC	382	67
A2P2 PP	371	68
JOPPO P	507	65
TIRANO P	501	70
VISSLA P	479	66



OMG (PP)



DECIPHER



JOPPO (P)



TOMMY DEE

# ABVs Holstein Breeding Values / April 2023

## PRODUCTION

Bull ID	A2 Status	Pedigree	BPI	BPI Rel%	HMI	Sust. Index	ASI	Protein (kg)	Protein %	Milk (L)	Fat (kg)	Fat %	Rel %	Daughters	Herds	Milk Speed	Temp	Likability	Cell Count	Mastitis Resistance	Daughter Fertility	Gestation Length	Calving Ease	Rel %	RRP	Sexed ULTRA PLUS 2.1m	Sexed ULTRA PLUS 4.0m
A2P2	PP	A22 Luster x Duke	371	68	317	560	177	11	0.14	156	54	0.69	79	1	1	103	101	104	160	106	106	0	103	98	\$25.00	\$65.00	
AMALFI		A22 Fedora x Main Event	428	69	449	580	128	8	0.17	-48	34	0.52	78	0	0	102	101	104	190	110	114	-2	99	97	\$22.00	\$50.00	
AUTOBOT		A22 Leisgo x Lambda	471	68	488	898	206	23	0.35	161	31	0.35	78	0	0	101	102	106	149	105	111	-3	98	84	\$22.00	\$52.00	
CFP	PP RC	A22 Drastic x Splendid	455	68	438	836	217	20	0.31	141	44	0.55	78	0	0	102	103	105	166	104	109	-6	103	98	\$28.00		
CINDERMAN		A12 Fedora x Supershot	467	69	484	723	158	13	0.38	-275	23	0.50	79	0	0	100	103	105	194	108	113	-8	101	78	\$24.00		
DECIPHER		A22 Leisgo x Wrangler	480	68	503	832	164	17	0.40	-150	17	0.33	78	0	0	102	103	106	159	109	111	3	101	90	\$28.00		\$58.00
DETLEV		A22 Reverso x Perseus	519	66	528	967	239	24	0.49	-60	34	0.53	77	0	0	103	101	104	175	105	112	0	103	70	\$26.00		
EASTERN		A22 Hermes x Superdave	453	65	441	766	234	23	0.36	168	43	0.52	76	0	0	101	103	105	158	103	113	-7	105	70	\$24.00		\$55.00
ENDGAME		A12 Superhero x Monterey	424	79	437	666	129	13	0.26	-45	20	0.31	88	64	18	102	103	104	184	108	111	0	102	96	\$22.00		
GILES		A22 JoSuper x Oman	338	86	278	656	223	28	0.26	527	36	0.20	93	94	30	102	102	105	151	103	107	-8	104	98	\$16.00		
JOLET		A22 Leisgo x Booth	441	68	423	744	215	23	0.45	-48	28	0.43	78	0	0	101	102	103	161	106	112	-2	99	76	\$16.00		
JOLO		A22 AltaGlow x Perseus	498	67	494	926	270	29	0.49	125	39	0.49	78	0	0	102	100	104	164	107	114	-7	105	73	\$16.00		
JOPPO	P	A12 CFP x Jeronimo	507	65	506	881	220	20	0.32	123	44	0.56	77	0	0	105	103	106	174	108	112	-7	103	71	\$20.00		
JOVIAL		A11 Silverline x Perseus	418	69	328	825	271	27	0.34	327	57	0.62	78	0	0	104	102	105	141	100	100	0	103	72	\$18.00		
KITAMIPP	PP RC	A12 Hotspot x Mr. Salvatore	382	67	378	677	137	19	0.21	281	16	0.06	77	0	0	102	103	105	173	105	109	-6	102	87	\$28.00		
LASTIN		A12 Fedora x Jett	477	69	509	787	139	14	0.34	-148	16	0.32	78	0	0	102	102	105	188	110	112	-2	102	96	\$22.00		
LEMONADE	PP	A22 CFP x Delta	417	66	397	728	206	17	0.30	64	45	0.61	77	0	0	102	103	105	155	103	109	0	102	72	\$24.00		
LOWRIDER		A22 Rocknroll x Aroidis	453	65	447	806	200	19	0.27	198	41	0.46	77	0	0	102	103	105	156	105	110	-1	102	70	\$22.00		
MAEBULL		A22 Palermo x Shottle	315	95	355	568	83	10	0.11	169	13	0.08	99	3773	252	101	103	103	180	106	109	1	102	99	\$18.00		
NIPIT	PP RC	A22 Hotspot x Splendid	430	67	388	864	219	28	0.33	374	31	0.21	78	0	0	103	103	105	157	105	106	1	101	94	\$28.00		
OMG	PP	A22 CFP PP x Jeronimo	493	65	499	789	212	12	0.48	-500	43	0.93	77	0	0	102	102	104	169	107	113	-1	102	71	\$26.00		
PEMBERTON		A22 Perseus x Jacey	448	89	405	933	254	35	0.46	411	24	0.09	96	247	41	103	107	109	150	102	106	1	102	98	\$28.00	\$60.00	
PILBARA		A22 Perseus x Powerball	567	70	569	1146	295	44	0.44	793	29	-0.07	75	39	8	102	103	105	172	104	115	-3	104	96	\$28.00	\$50.00	\$60.00
REDGATE		A22 Redcarpet x Superhero	438	67	500	699	150	9	0.27	-185	34	0.61	78	0	0	103	102	104	151	104	116	-3	103	71	\$18.00		
RIZHAT		A12 Manhattan x Montana	473	66	510	790	111	14	0.10	332	21	0.10	77	0	0	104	102	105	188	112	112	-3	104	69	\$22.00		
RIZMAN		A22 Manhattan x Montana	460	66	535	750	122	13	0.15	177	24	0.24	77	0	0	103	103	105	166	106	118	-5	103	69	\$24.00		
SILVERLINE		A12 Silver x Fever	329	94	194	732	268	32	0.20	785	57	0.34	99	945	104	103	101	103	105	101	94	2	101	99	\$20.00		
STARSMAGIC		A22 Manhattan x Durable	499	65	451	897	237	25	0.25	433	50	0.45	76	0	0	102	103	105	178	109	107	-8	104	66	\$30.00	\$62.00	
SUPERDAVE		A22 Superhero x Doorman	348	92	259	622	257	22	0.51	-176	44	0.75	99	730	81	100	104	106	157	102	103	-3	102	99	\$22.00	\$55.00	
SUPERDEW		A22 Kardew x Superhero	469	66	488	787	148	12	0.32	-191	26	0.49	77	0	0	105	104	106	160	108	110	-3	100	72	\$24.00		
SUPERPOWER		A22 Powerball x Supersire	424	82	425	837	230	31	0.47	226	18	0.12	90	69	23	100	102	104	145	104	112	-4	102	84	\$26.00	\$55.00	
TALKING		A22 Keeper P x Kingtut	479	67	525	859	157	17	0.29	67	22	0.28	78	0	0	102	99	103	172	109	114	-4	102	90	\$20.00	\$55.00	
TIRANO	P	A12 Jeronimo x Main Event	501	70	549	809	166	11	0.31	-209	37	0.66	79	0	0	105	101	104	179	108	114	-8	102	99	\$22.00	\$48.00	
TOMMYDEE		A22 Endgame x Alltime	494	67	515	839	202	16	0.46	-296	33	0.66	77	0	0	102	103	103	175	108	113	-1	105	89	\$20.00		
VARLEY		A22 Pemberton x Superhero	504	69	466	914	242	30	0.49	151	25	0.27	79	0	0	102	106	107	172	106	108	1	103	96	\$28.00	\$50.00	\$58.00
VISSLA	P	A12 Magicball x Superhero	479	66	506	693	182	10	0.40	-441	39	0.84	77	0	0	103	104	105	162	107	116	-3	104	72	\$24.00		
VITTORIA	PP RED	A22 CFP x Mission	439	66	413	793	223	22	0.42	3	35	0.50	77	0	0	102	102	104	149	106	109	-5	101	70	\$28.00		
YOLO		A22 Bandera x Meridian	558	68	541	1037	226	25	0.09	752	57	0.36	75	16	3	105	101	105	174	110	108	-2	103	92	Sexed Only	\$65.00	

All semen is subject to availability. Prices are exclusive of GST and effective from the 5th April 2023 although may be subject to change without notice. \*\* Contact your local sales representative to secure your order of 2.1M & 4M sexed semen.

# ABVs Holstein Breeding Values / April 2023

## TYPE

Bull ID	Overall Type	Mammary System	Dairy Strength	Rump	Feet & Legs	Stature	Bone Quality	Angularity	Muzzle Width	Body Depth	Chest Width	Pin Width	Pin Set	Loin Strength	Heel Depth	Rear Leg Set	Rear Leg View	Udder Texture	Udder Depth	Fore Attach	Rear Udder Height	Rear Udder Width	Centre Ligament	Teat Front	Teat Rear	Teat Length	Rel %	Survival	Heat Tolerance	Feed Saved
A2P2	103	108	97	105	96	106	104	98	94	98	99	103	105	105	102	104	97	97	105	106	108	104	103	103	100	99	109	97	-182	
AMALFI	108	107	104	102	98	106	96	100	107	102	106	102	96	105	99	99	102	101	103	102	107	103	106	104	101	95	110	100	-197	
AUTOBOT	104	106	96	104	103	102	99	95	96	97	99	103	102	100	108	97	101	98	106	102	109	100	104	104	106	95	110	97	34	
CFP	99	102	95	104	95	107	104	98	98	93	93	100	104	101	100	103	95	98	109	101	108	95	102	100	99	97	110	92	-8	
CINDERMAN	106	105	101	105	94	103	97	99	107	101	105	103	104	99	96	106	100	101	105	104	103	101	104	103	99	96	111	101	-101	
DECIPHER	111	109	103	98	102	102	99	103	100	102	100	100	94	98	104	101	102	103	106	107	106	101	109	105	105	104	111	97	-4	
DETLEV	103	102	98	99	98	102	98	96	97	98	101	106	97	98	103	104	96	98	104	101	103	103	101	98	101	95	110	97	45	
EASTERN	108	105	108	106	99	104	98	101	107	105	109	106	103	107	95	100	103	99	99	103	104	106	101	100	100	94	108	94	-149	
ENDGAME	108	105	105	103	102	101	100	99	102	104	105	107	102	98	99	97	106	106	104	104	105	102	105	96	100	97	111	101	-120	
GILES	101	95	107	103	103	101	95	102	106	104	108	98	99	106	96	96	105	95	93	94	98	104	94	92	92	105	107	95	-211	
JOLET	102	103	98	105	100	102	102	95	99	98	99	99	103	104	101	102	106	98	101	100	102	104	100	104	101	99	108	98	-152	
JOLO	96	97	95	97	99	98	97	92	96	96	97	97	96	98	100	94	98	96	104	100	100	95	97	98	102	94	106	98	-26	
JOPPO	100	101	99	101	96	105	103	99	96	96	97	100	98	104	96	95	102	97	108	103	104	97	99	102	99	98	109	96	-20	
JOVIAL	106	110	98	102	109	106	101	98	100	96	97	98	103	100	105	92	105	106	101	99	111	108	112	101	108	101	107	99	-25	
KITAMIPP	102	104	97	99	99	103	101	99	102	96	99	100	96	99	101	100	100	98	104	105	104	101	102	103	95	101	111	94	-140	
LASTIN	107	108	101	101	96	102	95	100	106	99	101	103	97	99	100	97	100	102	103	105	108	103	103	103	97	99	106	112	99	-41
LEMONADE	101	104	99	101	96	103	103	99	103	96	98	100	102	100	100	104	97	96	105	102	108	100	98	103	97	97	109	97	-54	
LOWRIDER	109	104	106	102	104	98	99	99	104	104	112	98	98	102	100	99	107	90	102	106	104	105	99	102	101	100	111	97	-67	
MAEBULL	103	99	102	101	96	98	94	101	100	103	104	100	101	99	94	103	102	98	100	105	100	100	97	94	92	101	99	109	104	10
NIPIT	99	101	93	99	96	106	107	101	92	92	89	101	98	98	101	102	97	102	110	104	106	93	98	99	99	100	110	91	-34	
OMG	100	100	99	104	95	99	97	98	101	100	102	101	105	101	93	99	98	89	108	105	104	96	100	96	100	95	109	95	-2	
PEMBERTON	103	104	98	101	103	102	99	97	99	98	99	105	97	102	98	96	103	100	103	103	103	103	103	100	105	100	107	95	-19	
PILBARA	105	107	102	102	97	104	105	100	97	102	100	107	93	103	99	100	101	104	102	100	110	104	106	102	106	93	106	109	96	-81
REDGATE	101	105	99	100	103	98	106	98	98	98	98	105	97	97	105	100	98	100	103	103	106	104	101	99	103	95	106	98	-8	
RIZHAT	108	107	99	102	100	102	100	98	97	100	98	100	98	104	98	96	108	100	107	109	103	102	103	106	102	101	112	105	-56	
RIZMAN	106	105	99	104	99	101	99	98	97	99	98	102	99	104	100	99	98	97	106	107	103	102	102	104	103	98	112	102	-67	
SILVERLINE	108	113	100	106	110	107	102	99	97	97	98	100	105	106	104	92	108	103	100	100	114	110	112	105	108	95	106	93	-108	
STARWAGIC	103	106	97	101	101	103	105	100	94	96	94	102	94	104	100	99	104	96	105	104	106	105	101	104	100	95	110	102	-102	
SUPERDAVE	98	98	102	99	90	100	98	102	102	101	103	103	96	97	89	100	102	100	96	97	99	101	98	101	100	99	105	95	-116	
SUPERDEW	105	107	99	100	101	99	103	98	95	99	99	104	99	100	102	98	103	103	106	106	109	102	102	101	98	89	111	95	27	
SUPERPOWER	105	102	102	104	96	101	101	98	105	101	101	101	101	103	95	103	101	101	99	102	102	102	97	101	94	99	106	99	-46	
TALKING	103	103	94	101	96	99	99	93	101	91	98	103	100	96	95	104	100	104	106	100	103	100	105	103	100	99	112	101	21	
TIRANO	101	106	97	103	101	100	107	99	98	97	96	100	101	101	98	99	102	98	104	103	106	106	102	101	101	95	107	100	32	
TOMMYDEE	100	102	94	100	96	99	102	92	100	95	99	100	102	95	98	106	99	96	104	103	103	99	100	103	100	94	109	100	31	
VARLEY	109	110	105	104	98	107	99	104	101	103	103	110	97	103	95	98	99	101	104	105	107	107	108	105	104	103	67	109	91	-98
VISSLA	104	106	98	101	97	101	103	98	97	100	100	102	99	100	99	105	103	100	105	108	106	102	102	102	100	100	109	101	-85	
VITTORIA	103	102	99	101	99	106	102	100	102	98	98	97	99	102	97	103	103	98	106	103	104	98	103	99	104	101	108	97	-38	
YOLO	110	111	102	103	101	99	100	98	105	96	101	108	104	103	101	107	105	102	106	106	109	102	111	107	109	91	112	101	-20	

All semen is subject to availability. Prices are exclusive of GST and effective from the 5th April 2023 although may be subject to change without notice. \*\* Contact your local sales representative to secure your order of 2.1M & 4M sexed semen.

# PREMIUM OFFER

ORDER 150+ STRAWS OF ANY COMBINATION FOR **\$25.00** per straw\*

<b>CFP PP RC</b>							RRP \$28.00		<b>BPI</b> 455 /68%		
Drastic x Splendid									<b>HWI</b> 438 /63%		
<b>Production</b>							0 dtrs 0 herds RIP 0%		<b>Type</b>		<b>Mammary</b>
ASI	kgP	P%	Milk	kgF	F%	Rel%			99	102	
217	20	0.31%	141	44	0.55%	78					
<b>Workability</b>			<b>Health</b>				0 dtrs 0 herds RIP 0%				
dtrs	herds	Rel 70%	C Count	Mast Res	Dtr Fert	Gest	Cal Ease	Survival			
M Speed	Temp	Like	166 /70%	104 /71%	109 /58%	-6 /99%	103 /98%	110 /58%			
102	103	105									



Dam, Vogue Splendid Samara PP

Popular Homozygous Polled Bull in the market today.

<b>DECIPHER</b>							RRP \$28.00		<b>BPI</b> 480 /68%		
Letsgo x Wrangler									<b>HWI</b> 503 /63%		
<b>Production</b>							0 dtrs 0 herds RIP 0%		<b>Type</b>		<b>Mammary</b>
ASI	kgP	P%	Milk	kgF	F%	Rel%			111	109	
164	17	0.40%	-150	17	0.33%	78					
<b>Workability</b>			<b>Health</b>				0 dtrs 0 herds RIP 0%				
dtrs	herds	Rel 70%	C Count	Mast Res	Dtr Fert	Gest	Cal Ease	Survival			
M Speed	Temp	Like	159 /69%	109 /72%	111 /58%	3 /94%	101 /90%	111 /59%			
102	103	106									



DECIPHER

HIGH demand sire, DECIPHER will be granted priority when ordering through this Premium Offer.

<b>PILBARA</b>							RRP \$28.00		<b>BPI</b> 567 /70%		
Perseus x Powerball									<b>HWI</b> 569 /66%		
<b>Production</b>							39 dtrs 8 herds RIP 71%		<b>Type</b>		<b>Mammary</b>
ASI	kgP	P%	Milk	kgF	F%	Rel%			105	107	
295	44	0.44%	793	29	-0.07%	75					
<b>Workability</b>			<b>Health</b>				0 dtrs 0 herds RIP 0%				
3 dtrs	3 herds	Rel 72%	C Count	Mast Res	Dtr Fert	Gest	Cal Ease	Survival			
M Speed	Temp	Like	172 /65%	104 /86%	115 /66%	-3 /97%	104 /96%	109 /63%			
102	103	105									



PILBARA

Elite BPI sire beginning to add daughters and good buying through this offer.

\* Order 150+ straws of any combination of selected bull for \$25.00 per straw. Offer is subject to semen availability and prices are quoted exclusive of GST.

# PREMIUM OFFER

ORDER 150+ STRAWS OF ANY COMBINATION FOR **\$25.00** per straw\*

## STARMAGIC

Manhattan x Durable

RRP \$30.00

BPI 499 /65%

HWI 451 /59%

Production							0 dtrs 0 herds RIP 0%		Type	Mammary
ASI	kgP	P%	Milk	kgF	F%	Rel%			103	106
237	25	0.25%	433	50	0.45%	76				

Workability			Health							0 dtrs 0 herds RIP 0%	
dtrs	herds	Rel 65%	C Count	Mast Res	Dtr Fert	Gest	Cal Ease	Survival			
M Speed	Temp	Like	178 /66%	109 /66%	107 /51%	-8 /62%	104 /66%	110 /53%			
102	103	105									



International sire with an appealing breakdown for Production, Health and Type.

## SUPERPOWER

Powerball x Supersire

RRP \$26.00

BPI 424 /82%

HWI 425 /77%

Production							69 dtrs 23 herds RIP 23%		Type	Mammary
ASI	kgP	P%	Milk	kgF	F%	Rel%			105	102
230	31	0.47%	226	18	0.12%	90				

Workability			Health							0 dtrs 0 herds RIP 0%	
dtrs	herds	Rel 83%	C Count	Mast Res	Dtr Fert	Gest	Cal Ease	Survival			
M Speed	Temp	Like	145 /85%	104 /90%	112 /83%	-4 /91%	102 /84%	106 /69%			
100	102	104									



Released as a daughter proven sire in 2022, this bull is back by popular demand.

## VARLEY

Pemberton x Superhero

RRP \$28.00

BPI 504 /69%

HWI 466 /64%

Production							0 dtrs 0 herds RIP 0%		Type	Mammary
ASI	kgP	P%	Milk	kgF	F%	Rel%			109	110
242	30	0.49%	151	25	0.27%	79				

Workability			Health							0 dtrs 0 herds RIP 0%	
dtrs	herds	Rel 71%	C Count	Mast Res	Dtr Fert	Gest	Cal Ease	Survival			
M Speed	Temp	Like	172 /70%	106 /72%	108 /62%	1 /97%	103 /96%	109 /60%			
102	106	107									



An ELITE genomic sire with a "no holes" breeding value...  
Great Calving Ease option and from the successful Carenda Holsteins breeding program.

Orders can be placed by contacting your Genetics Australia representative or your local semen distributor and cannot be used in conjunction with any other offer.  
Offer is valid from 5th April - 31st July 2023.

# PRIME OFFER

ORDER 150+ STRAWS OF ANY COMBINATION FOR **\$22.00** per straw\*

## EASTERN

Hermes x Superdave

RRP \$24.00

**BPI** 453 /65%

**HWI** 441 /60%

EASTERN



### Production

0 dtrs 0 herds RIP 0%

ASI	kgP	P%	Milk	kgF	F%	Rel%
234	23	0.36%	168	43	0.52%	76

### Type

108

### Mammary

105

### Workability

0 dtrs 0 herds Rel 67%

M Speed	Temp	Like
101	103	105

### Health

0 dtrs 0 herds RIP 0%

C Count	Mast Res	Dtr Fert	Gest	Cal Ease	Survival
158 /66%	103 /67%	113 /54%	-7 /62%	105 /70%	108 /54%

Elite genomic sire from the HIGH performance "LORETTO" family, backed by a combination of high production and conformation

## LEMONADE PP

CFP x Delta

RRP 24.00

**BPI** 417 /66%

**HWI** 397 /60%

Dam, Drewholme Delta Leisure



### Production

0 dtrs 0 herds RIP 0%

ASI	kgP	P%	Milk	kgF	F%	Rel%
206	17	0.30%	64	45	0.61%	77

### Type

101

### Mammary

104

### Workability

0 dtrs 0 herds Rel 67%

M Speed	Temp	Like
102	103	105

### Health

0 dtrs 0 herds RIP 0%

C Count	Mast Res	Dtr Fert	Gest	Cal Ease	Survival
155 /67%	103 /67%	109 /53%	0 /65%	102 /72%	109 /54%

Homozygous polled, LEMONADE offers a high level of production and milk solids and a solid all-round proof.

## OMG PP

CFP PP x Jeronimo

RRP 26.00

**BPI** 493 /65%

**HWI** 499 /60%

OMG



### Production

0 dtrs 0 herds RIP 0%

ASI	kgP	P%	Milk	kgF	F%	Rel%
212	12	0.48%	-500	43	0.93%	77

### Type

100

### Mammary

100

### Workability

0 dtrs 0 herds Rel 66%

M Speed	Temp	Like
102	102	104

### Health

0 dtrs 0 herds RIP 0%

C Count	Mast Res	Dtr Fert	Gest	Cal Ease	Survival
169 /66%	107 /67%	113 /52%	-1 /62%	102 /71%	109 /53%

Homozygous polled, OMG is a production sire with extreme milk components and high ASI breeding value.

\* Order 150+ straws of any combination of selected bull for \$22.00 per straw. Offer is subject to semen availability and prices are quoted exclusive of GST.

# PRIME OFFER

ORDER 150+ STRAWS OF ANY COMBINATION FOR **\$22.00** per straw\*

<b>SUPERDEW</b>							RRP 24.00	BPI	469 /66%
Kardew x Superhero								HWI	488 /61%
<b>Production</b>							0 dtrs 0 herds RIP 0%		
ASI	kgP	P%	Milk	kgF	F%	Rel%	Type	Mammary	
148	12	0.32%	-191	26	0.49%	77	105	107	
<b>Workability</b>			<b>Health</b>						
0 dtrs 0 herds Rel 68%			0 dtrs 0 herds RIP 0%						
M Speed	Temp	Like	C Count	Mast Res	Dtr Fert	Gest	Cal Ease	Survival	
105	104	106	160 /66%	108 /68%	110 /56%	-3 /63%	100 /72%	111 /56%	



NEW release genomic sire backed by NINE generations of Very Good dams and a descendant of the "Carly" family at Kaarmona.

<b>VISSLA P</b>							RRP 24.00	BPI	479 /66%
Magicball x Superhero								HWI	506 /60%
<b>Production</b>							0 dtrs 0 herds RIP 0%		
ASI	kgP	P%	Milk	kgF	F%	Rel%	Type	Mammary	
182	10	0.40%	-441	39	0.84%	77	104	106	
<b>Workability</b>			<b>Health</b>						
0 dtrs 0 herds Rel 67%			0 dtrs 0 herds RIP 0%						
M Speed	Temp	Like	C Count	Mast Res	Dtr Fert	Gest	Cal Ease	Survival	
103	104	105	162 /67%	107 /68%	116 /52%	-3 /69%	104 /72%	109 /54%	



High milk component sire and extreme Daughter Fertility, with a level of Calving Ease.

<b>VITTORIA PP RED</b>							RRP 28.00	BPI	439 /66%
CFP x Mission								HWI	413 /60%
<b>Production</b>							0 dtrs 0 herds RIP 0%		
ASI	kgP	P%	Milk	kgF	F%	Rel%	Type	Mammary	
223	22	0.42%	3	35	0.50%	77	103	102	
<b>Workability</b>			<b>Health</b>						
0 dtrs 0 herds Rel 65%			0 dtrs 0 herds RIP 0%						
M Speed	Temp	Like	C Count	Mast Res	Dtr Fert	Gest	Cal Ease	Survival	
102	102	104	149 /67%	106 /67%	109 /51%	-5 /69%	101 /70%	108 /53%	



NEW release genomics sire offering a great package for RED Holstein enthusiasts need to look closer.

Orders can be placed by contacting your Genetics Australia representative or your local semen distributor and cannot be used in conjunction with any other offer. Offer is valid from the 5th April – 31st July 2023.

# PEMBERTON

Perseus x Jacey

RRP \$28.00  
4m Sexed \$60.00  
SexedUltra™

## Carenda Pemberton

Sire:	Westcoast Perseus	Nasis:	12FFRAC
Dam:	Carenda Jacey Funky VG88	Beta Casein:	A22
Source:	Carenda Holsteins, Boyanup, WA	Kappa Casein:	AB
HB:	2030847		

## PEMBERTON



- Sustainability Choice Sire - Impressive Production
- Outstanding Workabilities - 103, 107 and 109 Likeability
- Available as a "Member Saver" sire

<b>BPI</b>	<b>448 /89%</b>	<b>HWI</b>	<b>405 /83%</b>	<b>SI</b>	<b>933 /84%</b>
------------	-----------------	------------	-----------------	-----------	-----------------

## Production

ASI	kgP	P%	Milk	kgF	F%	Rel%
254	35	0.46%	411	24	0.09%	96

## Workability Traits

Milking Speed	103
Temperament	107
Likeability	109

## Management Traits

Cell Count	150 /95%
Mastitis Resistance	102 /97%
Survival	107 /78%
Daughter Fertility	106 /84%
Calving Ease	102 /98%
Gestation Length	1 /99%
Heat Tolerance	95 /38%
Feed Saved	-19 /59%

## Conformation

Overall Type	103	Loin Strength	102
Mammary	104	Heel Depth	98
Dairy Strength	98	Rear Leg Set	96
Rump	101	Rear Leg Rear View	103
Feet & Legs	103	Udder Texture	100
Stature	102	Udder Depth	103
Bone Quality	99	Fore Attach	103
Angularity	97	Rear Udder Height	103
Muzzle Width	99	Rear Udder Width	103
Body Depth	98	Centre Ligament	103
Chest Width	99	Teat Place Front	100
Pin Width	105	Teat Place Rear	105
Pin Set	97	Teat Length	100

**GENETICS AUSTRALIA MEMBER SHAREHOLDERS SAVE WHEN PURCHASING EITHER CONVENTIONAL OR SEXED PEMBERTON SEMEN THIS AUTUMN / WINTER BREEDING PERIOD...**

Currently not a member shareholder - contact your local sales representative today.

Offer ONLY available whilst current stocks remain available and must end by 31st July 2023



(L-R) Carenda Pemberton Brandy GP83, Carenda Pemberton Strike VG85, Carenda Pemberton Bobbysue GP84

# Pemberton DAUGHTERS

# A2P2 PP

Luster x Duke

RRP \$25.00

2.1m Sexed \$65.00

SexedUltra™

## Vogue A2P2 PP

Sire:	Cherry-Lily Zip Luster P	Nasis:	70FFS56
Dam:	Silverridge Duke Elsa VG85	Beta Casein:	A22
Source:	Vogue Cattle Co, Canada	Kappa Casein:	AB
HB:	13446574		



- Homozygous Polled - NO de-horning required
- Australian Dairy Farmers love the calves
- Complete All Rounder

<b>BPI</b>	<b>371 /68%</b>	<b>HWI</b>	<b>317 /62%</b>	<b>SI</b>	<b>560 /65%</b>
------------	-----------------	------------	-----------------	-----------	-----------------

Production							1 dtrs 1 herds RIP 100%
ASI	kgP	P%	Milk	kgF	F%	Rel%	
177	11	0.14%	156	54	0.69%	79	

Workability Traits		0 dtrs 0 herds Rel 69%
Milking Speed		103
Temperament		101
Likeability		104

Management Traits		
Cell Count		160 /70%
Mastitis Resistance		106 /72%
Survival		109 /57%
Daughter Fertility		106 /57%
Calving Ease		103 /98%
Gestation Length		0 /99%
Heat Tolerance		97 /38%
Feed Saved		-182 /44%

Conformation				0 dtrs 0 herds Rel 65%
<b>Overall Type</b>	103	Loin Strength		105
<b>Mammary</b>	108	Heel Depth		102
<b>Dairy Strength</b>	97	Rear Leg Set		104
<b>Rump</b>	105	Rear Leg Rear View		97
<b>Feet &amp; Legs</b>	96	Udder Texture		97
Stature	106	Udder Depth		105
Bone Quality	104	Fore Attach		106
Angularity	98	Rear Udder Height		108
Muzzle Width	94	Rear Udder Width		104
Body Depth	98	Centre Ligament		103
Chest Width	99	Teat Place Front		103
Pin Width	103	Teat Place Rear		100
Pin Set	105	Teat Length		99

# AMALFI

Fedora x Main Event

RRP \$22.00

2.1m Sexed \$50.00

SexedUltra™

## Carenda Amalfi

Sire:	Sandy-Valley Fedora	Nasis:	12FFSAL
Dam:	Carenda Mainevent Veepee VG86	Beta Casein:	A22
Source:	Carenda Holsteins, Boyanup, WA	Kappa Casein:	AB
HB:	2069506		



- Dairy Strength with Fertility
- Outcross Bloodlines
- Use to also improve General Appearance and Udder Shape

<b>BPI</b>	<b>428 /69%</b>	<b>HWI</b>	<b>449 /64%</b>	<b>SI</b>	<b>580 /66%</b>
------------	-----------------	------------	-----------------	-----------	-----------------

Production							0 dtrs 0 herds RIP 0%
ASI	kgP	P%	Milk	kgF	F%	Rel%	
128	8	0.17%	-48	34	0.52%	78	

Workability Traits		0 dtrs 0 herds Rel 70%
Milking Speed		102
Temperament		101
Likeability		104

Management Traits		
Cell Count		190 /68%
Mastitis Resistance		110 /71%
Survival		110 /62%
Daughter Fertility		114 /65%
Calving Ease		99 /97%
Gestation Length		-2 /98%
Heat Tolerance		100 /38%
Feed Saved		-197 /44%

Conformation				0 dtrs 0 herds Rel 65%
<b>Overall Type</b>	108	Loin Strength		105
<b>Mammary</b>	107	Heel Depth		99
<b>Dairy Strength</b>	104	Rear Leg Set		99
<b>Rump</b>	102	Rear Leg Rear View		102
<b>Feet &amp; Legs</b>	98	Udder Texture		101
Stature	106	Udder Depth		103
Bone Quality	96	Fore Attach		102
Angularity	100	Rear Udder Height		107
Muzzle Width	107	Rear Udder Width		103
Body Depth	102	Centre Ligament		106
Chest Width	106	Teat Place Front		104
Pin Width	102	Teat Place Rear		101
Pin Set	96	Teat Length		95

# AUTOBOT

Letsgo x Lambda

RRP \$22.00  
4m Sexed \$52.00  
SexedUltra™

## Wilara Transformer

Sire:	Vogue Letsgo	Nasis:	12FFTL6
Dam:	Gorbro Lambdoor Tiffany VG85	Beta Casein:	A22
Source:	Wilara Holsteins, Tinamba, VIC	Kappa Casein:	BB
HB:	2133027		



- Survival ABV Specialist
- Top 1% BPI, Top 1% HWI, Top 1% SI
- Nice blend of Type and Mammary

<b>BPI</b>	<b>471 /68%</b>	<b>HWI</b>	<b>488 /62%</b>	<b>SI</b>	<b>898 /65%</b>
------------	-----------------	------------	-----------------	-----------	-----------------

Production							0 dtrs 0 herds RIP 0%
ASI	kgP	P%	Milk	kgF	F%	Rel%	
206	23	0.35%	161	31	0.35%	78	

Workability Traits		0 dtrs 0 herds Rel 69%
Milking Speed		101
Temperament		102
Likeability		106

Management Traits		
Cell Count	149 /69%	
Mastitis Resistance	105 /72%	
Survival	110 /57%	
Daughter Fertility	111 /56%	
Calving Ease	98 /84%	
Gestation Length	-3 /83%	
Heat Tolerance	97 /38%	
Feed Saved	34 /44%	

Conformation				0 dtrs 0 herds Rel 65%
<b>Overall Type</b>	104	Loin Strength		100
<b>Mammary</b>	106	Heel Depth		108
<b>Dairy Strength</b>	96	Rear Leg Set		97
<b>Rump</b>	104	Rear Leg Rear View		101
<b>Feet &amp; Legs</b>	103	Udder Texture		98
Stature	102	Udder Depth		106
Bone Quality	99	Fore Attach		102
Angularity	95	Rear Udder Height		109
Muzzle Width	96	Rear Udder Width		100
Body Depth	97	Centre Ligament		104
Chest Width	99	Teat Place Front		104
Pin Width	103	Teat Place Rear		106
Pin Set	102	Teat Length		95

# CFP PP RC

Drastic x Splendid

RRP \$28.00

## Vogue CFP PP

Sire:	Kings Ransom B Drastic P	Nasis:	70FFS52
Dam:	Vogue Splendid Samara PP VG86	Beta Casein:	A22
Source:	Vogue Cattle Co, Canada	Kappa Casein:	BB
HB:	40001156		



- Homozygous Polled - NO de-horning required
- Outstanding Production and Health
- Siring the Next Generation

<b>BPI</b>	<b>455 /68%</b>	<b>HWI</b>	<b>438 /63%</b>	<b>SI</b>	<b>836 /65%</b>
------------	-----------------	------------	-----------------	-----------	-----------------

Production							0 dtrs 0 herds RIP 0%
ASI	kgP	P%	Milk	kgF	F%	Rel%	
217	20	0.31%	141	44	0.55%	78	

Workability Traits		0 dtrs 0 herds Rel 70%
Milking Speed		102
Temperament		103
Likeability		105

Management Traits		
Cell Count	166 /70%	
Mastitis Resistance	104 /71%	
Survival	110 /58%	
Daughter Fertility	109 /58%	
Calving Ease	103 /98%	
Gestation Length	-6 /99%	
Heat Tolerance	92 /38%	
Feed Saved	-8 /44%	

Conformation				0 dtrs 0 herds Rel 66%
<b>Overall Type</b>	99	Loin Strength		101
<b>Mammary</b>	102	Heel Depth		100
<b>Dairy Strength</b>	95	Rear Leg Set		103
<b>Rump</b>	104	Rear Leg Rear View		95
<b>Feet &amp; Legs</b>	95	Udder Texture		98
Stature	107	Udder Depth		109
Bone Quality	104	Fore Attach		101
Angularity	98	Rear Udder Height		108
Muzzle Width	98	Rear Udder Width		95
Body Depth	93	Centre Ligament		102
Chest Width	93	Teat Place Front		100
Pin Width	100	Teat Place Rear		99
Pin Set	104	Teat Length		97

# CINDERMAN

RRP \$24.00

Fedora x Supershot

Kirk Andrews Cinderman

Sire:	Sandy-Valley Fedora	Nasis:	12FFSBD
Dam:	Kirk Andrews Supershot Cinderella 1788 GP82	Beta Casein:	A12
Source:	Kirk Andrew Holsteins	Kappa Casein:	BB
HB:	2120642		



- Complete All Round Sire
- Short Gestation Specialist
- International Cow Family

<b>BPI</b>	<b>467 /69%</b>	<b>HWI</b>	<b>484 /64%</b>	<b>SI</b>	<b>723 /66%</b>
------------	-----------------	------------	-----------------	-----------	-----------------

Production							0 dtrs 0 herds RIP 0%
ASI	kgP	P%	Milk	kgF	F%	Rel%	
158	13	0.38%	-275	23	0.50%	79	

Workability Traits		0 dtrs 0 herds Rel 70%
Milking Speed		100
Temperament		103
Likeability		105

Management Traits		
Cell Count	194	/70%
Mastitis Resistance	108	/72%
Survival	111	/61%
Daughter Fertility	113	/63%
Calving Ease	101	/78%
Gestation Length	-8	/66%
Heat Tolerance	101	/38%
Feed Saved	-101	/45%

Conformation				0 dtrs 0 herds Rel 66%
<b>Overall Type</b>	106	Loin Strength		99
<b>Mammary</b>	105	Heel Depth		96
<b>Dairy Strength</b>	101	Rear Leg Set		106
<b>Rump</b>	105	Rear Leg Rear View		100
<b>Feet &amp; Legs</b>	94	Udder Texture		101
Stature	103	Udder Depth		105
Bone Quality	97	Fore Attach		104
Angularity	99	Rear Udder Height		103
Muzzle Width	107	Rear Udder Width		101
Body Depth	101	Centre Ligament		104
Chest Width	105	Teat Place Front		103
Pin Width	103	Teat Place Rear		99
Pin Set	104	Teat Length		96

# DECIPHER

Letsgo x Wrangler

RRP \$28.00

4m Sexed \$58.00

SexedUltra

Calister Decipher

Sire:	Vogue Letsgo	Nasis:	12FFUK6
Dam:	Calister Wrangler Devonna VG85	Beta Casein:	A22
Source:	Calister Holsteins, Calivil, VIC	Kappa Casein:	AB
HB:	2144476		



- Dairy Strength with Fertility
- Top 1% BPI, Top 1% HWI, Top 1% SI
- Outstanding Type and Mammary

<b>BPI</b>	<b>480 /68%</b>	<b>HWI</b>	<b>503 /63%</b>	<b>SI</b>	<b>832 /65%</b>
------------	-----------------	------------	-----------------	-----------	-----------------

Production							0 dtrs 0 herds RIP 0%
ASI	kgP	P%	Milk	kgF	F%	Rel%	
164	17	0.40%	-150	17	0.33%	78	

Workability Traits		0 dtrs 0 herds Rel 70%
Milking Speed		102
Temperament		103
Likeability		106

Management Traits		
Cell Count	159	/69%
Mastitis Resistance	109	/72%
Survival	111	/59%
Daughter Fertility	111	/58%
Calving Ease	101	/90%
Gestation Length	3	/94%
Heat Tolerance	97	/38%
Feed Saved	-4	/44%

Conformation				0 dtrs 0 herds Rel 65%
<b>Overall Type</b>	111	Loin Strength		98
<b>Mammary</b>	109	Heel Depth		104
<b>Dairy Strength</b>	103	Rear Leg Set		101
<b>Rump</b>	98	Rear Leg Rear View		102
<b>Feet &amp; Legs</b>	102	Udder Texture		103
Stature	102	Udder Depth		106
Bone Quality	99	Fore Attach		107
Angularity	103	Rear Udder Height		106
Muzzle Width	100	Rear Udder Width		101
Body Depth	102	Centre Ligament		109
Chest Width	100	Teat Place Front		105
Pin Width	100	Teat Place Rear		105
Pin Set	94	Teat Length		104

# DETLEV



Reverso x Perseus

RRP \$26.00

## Illawambra Detlev

Sire:	Westcoast Reverso	Nasis:	12FFVR5
Dam:	Illawambra Perseus Delta VG85	Beta Casein:	A22
Source:	Illawambra Holsteins, Barrengarry, NSW	Kappa Casein:	
HB:	2190723		

Sire: Westcoast Reverso



- NEW inclusion for 2023
- Top 1% BPI, Top 1% HWI, Top 1% SI
- Available as a "Member Offer" sire

**BPI** 519 /66%    **HWI** 528 /60%    **SI** 967 /63%

Production							0 dtrs 0 herds RIP 0%
ASI	kgP	P%	Milk	kgF	F%	Rel%	
239	24	0.49%	-60	34	0.53%	77	

Workability Traits		0 dtrs 0 herds Rel 68%
Milking Speed		103
Temperament		101
Likeability		104

Management Traits		
Cell Count	175 /66%	
Mastitis Resistance	105 /67%	
Survival	110 /56%	
Daughter Fertility	112 /56%	
Calving Ease	103 /70%	
Gestation Length	0 /62%	
Heat Tolerance	97 /38%	
Feed Saved	45 /42%	

Conformation				0 dtrs 0 herds Rel 61%
<b>Overall Type</b>	103	Loin Strength		98
<b>Mammary</b>	102	Heel Depth		103
<b>Dairy Strength</b>	98	Rear Leg Set		104
<b>Rump</b>	99	Rear Leg Rear View		96
<b>Feet &amp; Legs</b>	98	Udder Texture		98
Stature	102	Udder Depth		104
Bone Quality	98	Fore Attach		101
Angularity	96	Rear Udder Height		103
Muzzle Width	97	Rear Udder Width		103
Body Depth	98	Centre Ligament		101
Chest Width	101	Teat Place Front		98
Pin Width	106	Teat Place Rear		101
Pin Set	97	Teat Length		95

# EASTERN

Hermes x Superdave

RRP \$24.00

4m Sexed \$55.00

SexedUltra™

## Eastern Star Lockeddown

Sire:	Peak Hermes	Nasis:	12FFUR7
Dam:	Eastern Star Superdave Loretto GP82	Beta Casein:	A22
Source:	Eastern Star Holsteins, Tinamba, VIC	Kappa Casein:	
HB:	2177582		

EASTERN



- Bred down from Ryanna Blackstar Loretto EX90 2E
- Balanced Production and Type and Heath traits
- Hermes x Jedi x Silver x Gold Chip x Roumare x Cash x Blackstar

**BPI** 453 /65%    **HWI** 441 /60%    **SI** 766 /62%

Production							0 dtrs 0 herds RIP 0%
ASI	kgP	P%	Milk	kgF	F%	Rel%	
234	23	0.36%	168	43	0.52%	76	

Workability Traits		0 dtrs 0 herds Rel 67%
Milking Speed		101
Temperament		103
Likeability		105

Management Traits		
Cell Count	158 /66%	
Mastitis Resistance	103 /67%	
Survival	108 /54%	
Daughter Fertility	113 /54%	
Calving Ease	105 /70%	
Gestation Length	-7 /62%	
Heat Tolerance	94 /38%	
Feed Saved	-149 /42%	

Conformation				0 dtrs 0 herds Rel 61%
<b>Overall Type</b>	108	Loin Strength		107
<b>Mammary</b>	105	Heel Depth		95
<b>Dairy Strength</b>	108	Rear Leg Set		100
<b>Rump</b>	106	Rear Leg Rear View		103
<b>Feet &amp; Legs</b>	99	Udder Texture		99
Stature	104	Udder Depth		99
Bone Quality	98	Fore Attach		103
Angularity	101	Rear Udder Height		104
Muzzle Width	107	Rear Udder Width		106
Body Depth	105	Centre Ligament		101
Chest Width	109	Teat Place Front		101
Pin Width	106	Teat Place Rear		100
Pin Set	103	Teat Length		94

# ENDGAME

Superhero x Monterey

RRP \$22.00

## Winaview Superhero Avenger

Sire:	Endco Superhero	Nasis:	12FFRBD
Dam:	Winaview Monterey Alicia 1264 VG86	Beta Casein:	A12
Source:	Winaview Holsteins, Warragul, VIC	Kappa Casein:	BE
HB:	2052184		



- Now with Milking Daughters
- Dairy Strength Specialist Sire
- Use to also improve General Appearance and Udder shape

<b>BPI</b>	<b>424 /79%</b>	<b>HWI</b>	<b>437 /73%</b>	<b>SI</b>	<b>666 /76%</b>
------------	-----------------	------------	-----------------	-----------	-----------------

Production							64 dtrs 18 herds RIP 42%
ASI	kgP	P%	Milk	kgF	F%	Rel%	
129	13	0.26%	-45	20	0.31%	88	

Workability Traits		32 dtrs 9 herds Rel 77%
Milking Speed		102
Temperament		103
Likeability		104

Management Traits	
Cell Count	184 /81%
Mastitis Resistance	108 /90%
Survival	111 /69%
Daughter Fertility	111 /66%
Calving Ease	102 /96%
Gestation Length	0 /97%
Heat Tolerance	101 /38%
Feed Saved	-120 /54%

Conformation				44 dtrs 12 herds Rel 81%
<b>Overall Type</b>	108	Loin Strength		98
<b>Mammary</b>	105	Heel Depth		99
<b>Dairy Strength</b>	105	Rear Leg Set		97
<b>Rump</b>	103	Rear Leg Rear View		106
<b>Feet &amp; Legs</b>	102	Udder Texture		106
Stature	101	Udder Depth		104
Bone Quality	100	Fore Attach		104
Angularity	99	Rear Udder Height		105
Muzzle Width	102	Rear Udder Width		102
Body Depth	104	Centre Ligament		105
Chest Width	105	Teat Place Front		96
Pin Width	107	Teat Place Rear		100
Pin Set	102	Teat Length		97

# GILES

JoSuper x Oman

RRP \$20.00

## Wilara JoSuper Jo

Sire:	Uecker Supersire Josuper	Nasis:	12FFM15
Dam:	Wilara Oman Jo VG87	Beta Casein:	A22
Source:	Wilara Holsteins, Tinamba, VIC	Kappa Casein:	AB
HB:	1898186		



Dtr: Wilara Giles Romi 7176

- High Milk Flow and Milk Solids
- Extreme improver for Dairy Strength and Teat Length
- High Semen Fertility Sire

<b>BPI</b>	<b>338 /86%</b>	<b>HWI</b>	<b>278 /81%</b>	<b>SI</b>	<b>656 /82%</b>
------------	-----------------	------------	-----------------	-----------	-----------------

Production							94 dtrs 30 herds RIP 6%
ASI	kgP	P%	Milk	kgF	F%	Rel%	
223	28	0.26%	527	36	0.20%	93	

Workability Traits		58 dtrs 16 herds Rel 87%
Milking Speed		102
Temperament		102
Likeability		105

Management Traits	
Cell Count	151 /91%
Mastitis Resistance	103 /93%
Survival	107 /85%
Daughter Fertility	107 /90%
Calving Ease	104 /98%
Gestation Length	-8 /99%
Heat Tolerance	95 /38%
Feed Saved	-211 /55%

Conformation				46 dtrs 19 herds Rel 85%
<b>Overall Type</b>	101	Loin Strength		106
<b>Mammary</b>	95	Heel Depth		96
<b>Dairy Strength</b>	107	Rear Leg Set		96
<b>Rump</b>	103	Rear Leg Rear View		105
<b>Feet &amp; Legs</b>	103	Udder Texture		95
Stature	101	Udder Depth		93
Bone Quality	95	Fore Attach		94
Angularity	102	Rear Udder Height		98
Muzzle Width	106	Rear Udder Width		104
Body Depth	104	Centre Ligament		94
Chest Width	108	Teat Place Front		92
Pin Width	98	Teat Place Rear		92
Pin Set	99	Teat Length		105

# JOLET

Letsgo x Booth

RRP \$16.00

## Wilara Jolet

Sire:	Vogue Letsgo	Nasis:	12FFTL8
Dam:	Wilara Booth Jo VG86	Beta Casein:	A22
Source:	Wilara Holsteins, Tinamba, VIC	Kappa Casein:	BB
HB:	2133033		



- High Production Sire with outstanding Milk Solids
- Use to improve Cell Count and Daughter Fertility
- Receiving positive reports with progeny on the ground

<b>BPI</b>	<b>441 /68%</b>	<b>HWI</b>	<b>423 /62%</b>	<b>SI</b>	<b>744 /65%</b>
------------	-----------------	------------	-----------------	-----------	-----------------

Production							0 dtrs 0 herds RIP 0%
ASI	kgP	P%	Milk	kgF	F%	Rel%	
215	23	0.45%	-48	28	0.43%	78	

Workability Traits		0 dtrs 0 herds Rel 70%
Milking Speed		101
Temperament		102
Likeability		103

Management Traits		
Cell Count	161 /68%	
Mastitis Resistance	106 /72%	
Survival	108 /58%	
Daughter Fertility	112 /58%	
Calving Ease	99 /76%	
Gestation Length	-2 /80%	
Heat Tolerance	98 /38%	
Feed Saved	-152 /44%	

Conformation				0 dtrs 0 herds Rel 65%
<b>Overall Type</b>	102	Loin Strength		104
<b>Mammary</b>	103	Heel Depth		101
<b>Dairy Strength</b>	98	Rear Leg Set		102
<b>Rump</b>	105	Rear Leg Rear View		106
<b>Feet &amp; Legs</b>	100	Udder Texture		98
Stature	102	Udder Depth		101
Bone Quality	102	Fore Attach		100
Angularity	95	Rear Udder Height		102
Muzzle Width	99	Rear Udder Width		104
Body Depth	98	Centre Ligament		100
Chest Width	99	Teat Place Front		104
Pin Width	99	Teat Place Rear		101
Pin Set	103	Teat Length		99

# JOLO

AltaGlow x Perseus

RRP \$16.00

## Wilara Jolo

Sire:	Peak Fscnr AltaGlow	Nasis:	12FFTL7
Dam:	Wilara Perseus Jo GP83	Beta Casein:	A22
Source:	Wilara Holsteins, Tinamba, VIC	Kappa Casein:	BB
HB:	2134856		



- A nice balance of Production and Health traits
- Top 1% BPI, Top 1% HWI, Top 1% SI
- Maximising Profitability with this young genomic sire

<b>BPI</b>	<b>498 /67%</b>	<b>HWI</b>	<b>494 /61%</b>	<b>SI</b>	<b>926 /64%</b>
------------	-----------------	------------	-----------------	-----------	-----------------

Production							0 dtrs 0 herds RIP 0%
ASI	kgP	P%	Milk	kgF	F%	Rel%	
270	29	0.49%	125	39	0.49%	78	

Workability Traits		0 dtrs 0 herds Rel 68%
Milking Speed		102
Temperament		100
Likeability		104

Management Traits		
Cell Count	164 /69%	
Mastitis Resistance	107 /68%	
Survival	106 /54%	
Daughter Fertility	114 /54%	
Calving Ease	105 /73%	
Gestation Length	-7 /69%	
Heat Tolerance	98 /38%	
Feed Saved	-26 /43%	

Conformation				0 dtrs 0 herds Rel 64%
<b>Overall Type</b>	96	Loin Strength		98
<b>Mammary</b>	97	Heel Depth		100
<b>Dairy Strength</b>	95	Rear Leg Set		94
<b>Rump</b>	97	Rear Leg Rear View		98
<b>Feet &amp; Legs</b>	99	Udder Texture		96
Stature	98	Udder Depth		104
Bone Quality	97	Fore Attach		100
Angularity	92	Rear Udder Height		100
Muzzle Width	96	Rear Udder Width		95
Body Depth	96	Centre Ligament		97
Chest Width	97	Teat Place Front		98
Pin Width	97	Teat Place Rear		102
Pin Set	96	Teat Length		94

# JOPPO P

CFP x Jeronimo

RRP \$20.00

## Wilara Joppo

Sire:	Vogue CFP PP RC	Nasis:	12FFUR2
Dam:	Wilara Jeronimo Jo GP84	Beta Casein:	A12
Source:	Wilara Holsteins, Tinamba, VIC	Kappa Casein:	0
HB:	2169907		



- NEW release "Polled" CFP son
- Top 1% BPI, Top 1% HWI, Top 1% SI
- Positive Milk, Fat & Protein Sire

<b>BPI</b>	<b>507 /65%</b>	<b>HWI</b>	<b>506 /59%</b>	<b>SI</b>	<b>881 /63%</b>
------------	-----------------	------------	-----------------	-----------	-----------------

Production							0 dtrs 0 herds RIP 0%
ASI	kgP	P%	Milk	kgF	F%	Rel%	
220	20	0.32%	123	44	0.57%	77	

Workability Traits		0 dtrs 0 herds Rel 65%
Milking Speed		105
Temperament		103
Likeability		106

Management Traits		
Cell Count	174	/67%
Mastitis Resistance	108	/66%
Survival	109	/53%
Daughter Fertility	112	/50%
Calving Ease	103	/71%
Gestation Length	-7	/63%
Heat Tolerance	96	/38%
Feed Saved	-20	/43%

Conformation				0 dtrs 0 herds Rel 62%
<b>Overall Type</b>	100	Loin Strength		104
<b>Mammary</b>	101	Heel Depth		96
<b>Dairy Strength</b>	99	Rear Leg Set		95
<b>Rump</b>	101	Rear Leg Rear View		102
<b>Feet &amp; Legs</b>	96	Udder Texture		97
Stature	105	Udder Depth		108
Bone Quality	103	Fore Attach		103
Angularity	99	Rear Udder Height		104
Muzzle Width	96	Rear Udder Width		97
Body Depth	96	Centre Ligament		99
Chest Width	97	Teat Place Front		102
Pin Width	100	Teat Place Rear		99
Pin Set	98	Teat Length		98

# JOVIAL

Silverline x Perseus

RRP \$18.00

## Rockwella Farm Jovial

Sire:	Glomar Silver 1717	Nasis:	12FFULO
Dam:	Rockwella Farm Perseus Jewel GP84	Beta Casein:	A11
Source:	Rockwella Farm Holsteins, Yankalilla, SA	Kappa Casein:	AA
HB:	2176918		



- Son of the popular SILVERLINE bull
- Elite Type and Production Sire
- Use to also improve General Appearance and Udder shape

<b>BPI</b>	<b>418 /69%</b>	<b>HWI</b>	<b>328 /64%</b>	<b>SI</b>	<b>825 /66%</b>
------------	-----------------	------------	-----------------	-----------	-----------------

Production							0 dtrs 0 herds RIP 0%
ASI	kgP	P%	Milk	kgF	F%	Rel%	
271	27	0.34%	327	57	0.62%	78	

Workability Traits		0 dtrs 0 herds Rel 71%
Milking Speed		104
Temperament		102
Likeability		105

Management Traits		
Cell Count	141	/69%
Mastitis Resistance	100	/71%
Survival	107	/63%
Daughter Fertility	100	/65%
Calving Ease	103	/72%
Gestation Length	0	/63%
Heat Tolerance	99	/38%
Feed Saved	-25	/44%

Conformation				0 dtrs 0 herds Rel 66%
<b>Overall Type</b>	106	Loin Strength		100
<b>Mammary</b>	110	Heel Depth		105
<b>Dairy Strength</b>	98	Rear Leg Set		92
<b>Rump</b>	102	Rear Leg Rear View		105
<b>Feet &amp; Legs</b>	109	Udder Texture		106
Stature	106	Udder Depth		101
Bone Quality	101	Fore Attach		99
Angularity	98	Rear Udder Height		111
Muzzle Width	100	Rear Udder Width		108
Body Depth	96	Centre Ligament		112
Chest Width	97	Teat Place Front		101
Pin Width	98	Teat Place Rear		108
Pin Set	103	Teat Length		101

# KITAMI PP RC

RRP \$28.00

Hotspot x Mr Salvatore

## Wil Kitami PP

Sire:	WIL Hotspot P	Nasis:	93FFS16
Dam:	Wil Kysa VG85	Beta Casein:	A12
Source:	Intermizoo, Italy	Kappa Casein:	BE
HB:	540355289		

MGD, Wilder Kysu



- Homozygous Polled - NO de-horning required
- Nice Balance of Production & Type
- Improves Teat Length

<b>BPI</b>	<b>382 /67%</b>	<b>HWI</b>	<b>378 /62%</b>	<b>SI</b>	<b>677 /64%</b>
------------	-----------------	------------	-----------------	-----------	-----------------

Production							0 dtrs 0 herds RIP 0%
ASI	kgP	P%	Milk	kgF	F%	Rel%	
137	19	0.21%	281	16	0.06%	77	

Workability Traits		0 dtrs 0 herds Rel 69%
Milking Speed		102
Temperament		103
Likeability		105

Management Traits		
Cell Count	173 /68%	
Mastitis Resistance	105 /70%	
Survival	111 /58%	
Daughter Fertility	109 /59%	
Calving Ease	102 /87%	
Gestation Length	-6 /91%	
Heat Tolerance	94 /38%	
Feed Saved	-140 /43%	

Conformation				0 dtrs 0 herds Rel 64%
<b>Overall Type</b>	102	Loin Strength		99
<b>Mammary</b>	104	Heel Depth		101
<b>Dairy Strength</b>	97	Rear Leg Set		100
<b>Rump</b>	99	Rear Leg Rear View		100
<b>Feet &amp; Legs</b>	99	Udder Texture		98
Stature	103	Udder Depth		104
Bone Quality	101	Fore Attach		105
Angularity	99	Rear Udder Height		104
Muzzle Width	102	Rear Udder Width		101
Body Depth	96	Centre Ligament		102
Chest Width	99	Teat Place Front		103
Pin Width	100	Teat Place Rear		95
Pin Set	96	Teat Length		101

# LASTIN

RRP \$22.00

Fedora x Jett

## Redmaw Fedora Lastin

Sire:	Sandy-Valley Fedora	Nasis:	12FFSAF
Dam:	Redmaw Jett Lautaky VG85	Beta Casein:	A12
Source:	Redmaw Holsteins, Lockington, VIC	Kappa Casein:	BB
HB:	2088239		

LASTIN



- Farmer Favourite
- Complete Health Trait sire
- Use to also improve General Appearance and Udder Shape

<b>BPI</b>	<b>477 /69%</b>	<b>HWI</b>	<b>509 /64%</b>	<b>SI</b>	<b>787 /66%</b>
------------	-----------------	------------	-----------------	-----------	-----------------

Production							0 dtrs 0 herds RIP 0%
ASI	kgP	P%	Milk	kgF	F%	Rel%	
139	14	0.34%	-148	16	0.32%	78	

Workability Traits		0 dtrs 0 herds Rel 70%
Milking Speed		102
Temperament		102
Likeability		105

Management Traits		
Cell Count	188 /69%	
Mastitis Resistance	110 /72%	
Survival	112 /61%	
Daughter Fertility	112 /64%	
Calving Ease	102 /96%	
Gestation Length	-2 /98%	
Heat Tolerance	99 /38%	
Feed Saved	-41 /44%	

Conformation				0 dtrs 0 herds Rel 66%
<b>Overall Type</b>	107	Loin Strength		99
<b>Mammary</b>	108	Heel Depth		100
<b>Dairy Strength</b>	101	Rear Leg Set		97
<b>Rump</b>	101	Rear Leg Rear View		100
<b>Feet &amp; Legs</b>	96	Udder Texture		102
Stature	102	Udder Depth		103
Bone Quality	95	Fore Attach		105
Angularity	100	Rear Udder Height		108
Muzzle Width	106	Rear Udder Width		103
Body Depth	99	Centre Ligament		103
Chest Width	101	Teat Place Front		103
Pin Width	103	Teat Place Rear		97
Pin Set	97	Teat Length		99

# LEMONADE PP

RRP \$24.00

CFP x Delta

## Vala CFP Lemonade

Sire:	Vogue CFP PP RC	Nasis:	12FFUK9
Dam:	Drewholme Delta Leisure VG85	Beta Casein:	A22
Source:	Vala Holsteins, Toolamba, VIC	Kappa Casein:	BB
HB:	2157383		



- Homozygous Polled - NO de-horning required
- A22 CFP PP Son
- Great Blend of Health Traits

<b>BPI</b>	<b>417 /66%</b>	<b>HWI</b>	<b>397 /60%</b>	<b>SI</b>	<b>728 /63%</b>
------------	-----------------	------------	-----------------	-----------	-----------------

Production							0 dtrs 0 herds RIP 0%
ASI	kgP	P%	Milk	kgF	F%	Rel%	
206	17	0.30%	64	45	0.61%	77	

Workability Traits		0 dtrs 0 herds Rel 67%
Milking Speed		102
Temperament		103
Likeability		105

Management Traits		
Cell Count	155	/67%
Mastitis Resistance	103	/67%
Survival	109	/54%
Daughter Fertility	109	/53%
Calving Ease	102	/72%
Gestation Length	0	/65%
Heat Tolerance	97	/38%
Feed Saved	-54	/42%

Conformation				0 dtrs 0 herds Rel 61%
<b>Overall Type</b>	101	Loin Strength		100
<b>Mammary</b>	104	Heel Depth		100
<b>Dairy Strength</b>	99	Rear Leg Set		104
<b>Rump</b>	101	Rear Leg Rear View		97
<b>Feet &amp; Legs</b>	96	Udder Texture		96
Stature	103	Udder Depth		105
Bone Quality	103	Fore Attach		102
Angularity	99	Rear Udder Height		108
Muzzle Width	103	Rear Udder Width		100
Body Depth	96	Centre Ligament		98
Chest Width	98	Teat Place Front		103
Pin Width	100	Teat Place Rear		97
Pin Set	102	Teat Length		97

# LOWRIDER

RRP \$22.00

Rocknroll x Aroldis

## Illawambra Lowrider

Sire:	Westcoast Rocknroll	Nasis:	12FFVR3
Dam:	Illawambra Aroldis Netta 3886	Beta Casein:	A22
Source:	Illawambra Holsteins, Barrengarry, NSW	Kappa Casein:	0
HB:	2190732		



Sire: Westcoast Rocknroll

- Looking for smaller frame and Dairy Strength.... Look LOWRIDER
- Out-cross pedigree and an "Easy use" bull
- The "Complete" commercial dairymans choice

<b>BPI</b>	<b>453 /65%</b>	<b>HWI</b>	<b>447 /59%</b>	<b>SI</b>	<b>806 /62%</b>
------------	-----------------	------------	-----------------	-----------	-----------------

Production							0 dtrs 0 herds RIP 0%
ASI	kgP	P%	Milk	kgF	F%	Rel%	
200	19	0.27%	198	41	0.46%	77	

Workability Traits		0 dtrs 0 herds Rel 65%
Milking Speed		102
Temperament		103
Likeability		105

Management Traits		
Cell Count	156	/66%
Mastitis Resistance	105	/66%
Survival	111	/53%
Daughter Fertility	110	/52%
Calving Ease	102	/70%
Gestation Length	-1	/62%
Heat Tolerance	97	/38%
Feed Saved	-67	/42%

Conformation				0 dtrs 0 herds Rel 61%
<b>Overall Type</b>	109	Loin Strength		102
<b>Mammary</b>	104	Heel Depth		100
<b>Dairy Strength</b>	106	Rear Leg Set		99
<b>Rump</b>	102	Rear Leg Rear View		107
<b>Feet &amp; Legs</b>	104	Udder Texture		90
Stature	98	Udder Depth		102
Bone Quality	99	Fore Attach		106
Angularity	99	Rear Udder Height		104
Muzzle Width	104	Rear Udder Width		105
Body Depth	104	Centre Ligament		99
Chest Width	112	Teat Place Front		102
Pin Width	98	Teat Place Rear		101
Pin Set	98	Teat Length		100

# MONITOR HEAT AND HEALTH FROM WHEREVER YOU ARE.

## Highly accurate Heat detection

Active Tag enhances the management of breeding programs by detecting subtle gestures and behaviours that aren't visible to the naked eye. Finetune mating, manage calving dates, and actively reduce the instances of silent heats and wasted straws.

## Best in class Gateway

- Up to **1,000 metres\***, **360 degree**, line-of-sight range
- Auto-synchs with overlapping Gateways to maximise coverage
- Real-time communication via mobile or Wi-Fi networks
- Full coverage for up to 5,000 animals per Gateway

\*Under optimal conditions

## Better animal health 365-days a year

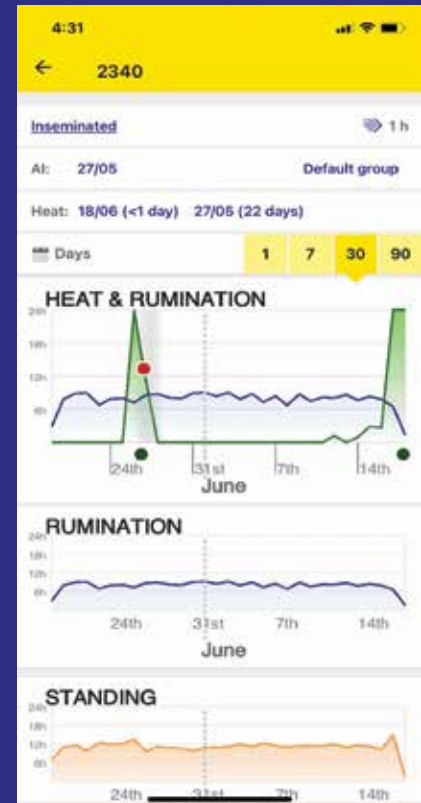
Active Tag monitors your cows, learning each individual's movements and behaviours. Get alerted to changes in behaviour signaling a potential health concern, often before the animal presents with any visual signs of illness.





See how animals are performing via simple graphs and charts.

## Active Tag



View heat and health data history on individual animals or groups. Easily print or download reports and graphs in common file formats.

Distributed by Genetics Australia.



**Contact our  
Tru-Test Active Tag Specialist  
Rodney Brooks 0408 741 034**  
Gerard Brislin 0408 107 019  
Greg Tiller 0407 366 985





# MERCHANDISE



Aerosol cans

**\$16<sup>00</sup>**  
per 500ml can



**\$92<sup>00</sup>**

Detail 4ltr Bucket  
available in blue, red,  
green, yellow and orange



DETAIL 10 LITRE  
**\$194<sup>00</sup>**  
per bucket

10-litre buckets are available in blue,  
red, green, yellow and orange

## AI Equipment

### Complete DIY AI Kit

Everything you need in one durable stainless steel kitbox fully compartmentalised to keep everything in its place.

- 2.5 Litre AI Lube
- Lube bottle
- Paper towels
- 3x Flexia Guns
- FIL Tell Tail Aerosol
- Polysem red gloves
- AI Thaw flask
- Cito thaw monitor
- Thermometer
- Scissors
- AI tweezers
- Kit box
- 50P AI Sheaths x 2

### VALUED OVER \$500

Also available - AI Kit box only, \$165 + GST  
SAVE over 25% when buying complete Kit Box

All prices are plus GST. Order through your local herd improvement reseller, our online webshop, placing an order through [orders@genaustr.com.au](mailto:orders@genaustr.com.au) or call (03) 5367 3888

**\$375<sup>00</sup>**



\*All above items can be purchased separately.



### AI Lube

This high quality obstetric lubricant is AI safe and also useful for calving, pregnancy testing etc. It is also excellent value.

5 LITRE  
**\$32<sup>00</sup>**

2.5 LITRE  
**\$18<sup>00</sup>**

## Polysem gloves

Orange 25 micron

**\$24.00**

Red 30 micron

**\$27.50**

Yellow 35 micron

**\$30.00**



## CIDR

The original cattle oestrus synchronisation insert

There are many benefits to using synchronising inserts to assist in reproduction, potentially including:

- better fertility - increased conception rates
- tighter calving pattern
- easier cattle management
- reducing the time spent on heat detection

## Dairy Mac Superthaw

The DairyMac Digital SUPERTHAW™ is designed and manufactured in the UK. It is based on a comprehensive list of 'needs' and 'desires' from our discussions with farmers, AI Technicians and Vets. It is very important that bull semen is thawed consistently at the right temperature.

**NOW AVAILABLE RECHARGEABLE - \$620.00**



**\$420<sup>00</sup>**

## DairyMac AI Gun Superwarmer

What about convenience? This temperature controlled carrying case for loaded A.I. guns is your answer. Look no further.



**\$1100<sup>00</sup>**



## Cue Mate® Reload Tray

Tray 40 Pods 20 Tails

**\$225<sup>00</sup>**

## Cue Mate® RTU

10 RTU Devices per Tray

**\$140<sup>00</sup>**

## Cue Mate® Blank Pod

Tray 40 Pods

**\$130<sup>00</sup>**

## Cue Mate® Applicator Green

1 applicator

**\$30<sup>00</sup>**



All prices subject to GST and availability.

# ESTROTECT™ BREEDING INDICATOR

ESTROTECT™ breeding indicators are guaranteed\* to perform as or better than any tool on the market. It's scratch-off technology allows you to keep tabs on which cows are in standing heat more efficiently and effectively than competitive heat detectors.

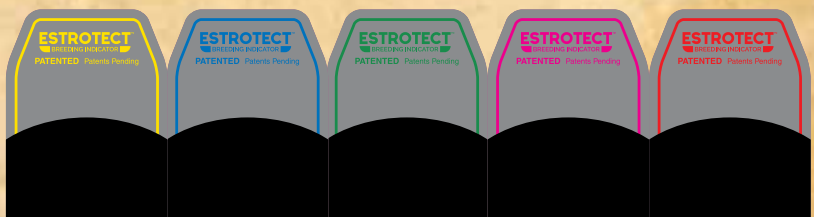


BREED

DON'T BREED

**\$120<sup>00</sup>**

**Genetocs**  
AUSTRALIA  
Breeding better Australian herds



# MAEBULL

Palermo x Shottle

RRP \$18.00

## Calister Maebull

Sire:	Glenn-Ann Palermo	Nasis:	12FFJ49
Dam:	Morningview Shtl Lucy EX2E	Beta Casein:	A22
Source:	Calister Holsteins, Calivil, VIC	Kappa Casein:	AB
HB:	1712643		



- Australia's Premium Daughter Proven Sire
- Overall Health & Fitness Improver
- 99% Reliable and a Farmer Favourite

<b>BPI</b>	<b>315 /95%</b>	<b>HWI</b>	<b>355 /90%</b>	<b>SI</b>	<b>568 /90%</b>
------------	-----------------	------------	-----------------	-----------	-----------------

Production							3773 dtrs 252 herds RIP 24%
ASI	kgP	P%	Milk	kgF	F%	Rel%	
83	10	0.11%	169	13	0.08%	99	

Workability Traits		1217 dtrs 122 herds Rel 99%
Milking Speed		101
Temperament		101
Likeability		103

Management Traits		
Cell Count		180 /99%
Mastitis Resistance		106 /99%
Survival		109 /99%
Daughter Fertility		109 /99%
Calving Ease		102 /99%
Gestation Length		1 /99%
Heat Tolerance		104 /38%
Feed Saved		10 /62%

Conformation				1089 dtrs 94 herds Rel 99%
<b>Overall Type</b>	103	Loin Strength		99
<b>Mammary</b>	99	Heel Depth		94
<b>Dairy Strength</b>	102	Rear Leg Set		103
<b>Rump</b>	101	Rear Leg Rear View		102
<b>Feet &amp; Legs</b>	96	Udder Texture		98
Stature	98	Udder Depth		100
Bone Quality	94	Fore Attach		105
Angularity	101	Rear Udder Height		100
Muzzle Width	100	Rear Udder Width		100
Body Depth	103	Centre Ligament		97
Chest Width	104	Teat Place Front		94
Pin Width	100	Teat Place Rear		92
Pin Set	101	Teat Length		101

# NIPIT PP RC

Hotspot x Splendid

RRP \$28.00

## Vogue Nipit PP

Sire:	WIL Hotspot P	Nasis:	70FFS57
Dam:	Vogue Splendid Samara PP VG86	Beta Casein:	A22
Source:	Vogue Cattle Co, Canada	Kappa Casein:	BB
HB:	40001169		



- Homozygous Polled - NO de-horning required
- Impressing many farmers pre-calving
- Last Stocks - Limited opportunities

<b>BPI</b>	<b>430 /67%</b>	<b>HWI</b>	<b>388 /62%</b>	<b>SI</b>	<b>864 /64%</b>
------------	-----------------	------------	-----------------	-----------	-----------------

Production							0 dtrs 0 herds RIP 0%
ASI	kgP	P%	Milk	kgF	F%	Rel%	
219	28	0.33%	374	31	0.21%	78	

Workability Traits		0 dtrs 0 herds Rel 69%
Milking Speed		103
Temperament		103
Likeability		105

Management Traits		
Cell Count		157 /69%
Mastitis Resistance		105 /70%
Survival		110 /57%
Daughter Fertility		106 /58%
Calving Ease		101 /94%
Gestation Length		1 /95%
Heat Tolerance		91 /38%
Feed Saved		-34 /43%

Conformation				0 dtrs 0 herds Rel 64%
<b>Overall Type</b>	99	Loin Strength		98
<b>Mammary</b>	101	Heel Depth		101
<b>Dairy Strength</b>	93	Rear Leg Set		102
<b>Rump</b>	99	Rear Leg Rear View		97
<b>Feet &amp; Legs</b>	96	Udder Texture		102
Stature	106	Udder Depth		110
Bone Quality	107	Fore Attach		104
Angularity	101	Rear Udder Height		106
Muzzle Width	92	Rear Udder Width		93
Body Depth	92	Centre Ligament		98
Chest Width	89	Teat Place Front		99
Pin Width	101	Teat Place Rear		99
Pin Set	98	Teat Length		100

# OMG PP

CFP PP x Jeronimo

RRP \$26.00

## Carenda OMG

Sire:	Vogue CFP PP RC	Nasis:	12FFUR5
Dam:	Carenda Jeronimo Vista VG87	Beta Casein:	A22
Source:	Carenda Holsteins, Boyanup, WA	Kappa Casein:	
HB:	2168243		



- Homozygous Polled - NO de-horning required
- Elite PP sire with extreme milk components
- Graduate from the Carenda Holsteins program

<b>BPI</b>	<b>493 /65%</b>	<b>HWI</b>	<b>499 /60%</b>	<b>SI</b>	<b>789 /63%</b>
------------	-----------------	------------	-----------------	-----------	-----------------

Production							0 dtrs 0 herds RIP 0%
ASI	kgP	P%	Milk	kgF	F%	Rel%	
212	12	0.48%	-500	43	0.93%	77	

Workability Traits		0 dtrs 0 herds Rel 66%
Milking Speed		102
Temperament		102
Likeability		104

Management Traits	
Cell Count	169 /66%
Mastitis Resistance	107 /67%
Survival	109 /53%
Daughter Fertility	113 /52%
Calving Ease	102 /71%
Gestation Length	-1 /62%
Heat Tolerance	95 /38%
Feed Saved	-2 /42%

Conformation				0 dtrs 0 herds Rel 62%
<b>Overall Type</b>	100	Loin Strength		101
<b>Mammary</b>	100	Heel Depth		93
<b>Dairy Strength</b>	99	Rear Leg Set		99
<b>Rump</b>	104	Rear Leg Rear View		98
<b>Feet &amp; Legs</b>	95	Udder Texture		89
Stature	99	Udder Depth		108
Bone Quality	97	Fore Attach		105
Angularity	98	Rear Udder Height		104
Muzzle Width	101	Rear Udder Width		96
Body Depth	100	Centre Ligament		96
Chest Width	102	Teat Place Front		100
Pin Width	101	Teat Place Rear		96
Pin Set	105	Teat Length		95

# PILBARA

Perseus x Powerball

RRP \$28.00

2.1m Sexed \$50.00

SexedUltra™ 4m Sexed \$60.00

## Carenda Pilbara

Sire:	Westcoast Perseus	Nasis:	12FFRAE
Dam:	Carenda Powerball Vergara P GP82	Beta Casein:	A22
Source:	Carenda Holsteins, Boyanup, WA	Kappa Casein:	BB
HB:	2050612		



- BEST in the breed for Sustainability Index - #1 ranked Holstein sire
- Top 1% BPI, Top 1% HWI, Top 1% SI
- Daughters beginning to calve... Impressive Performance sire

<b>BPI</b>	<b>567 /70%</b>	<b>HWI</b>	<b>569 /66%</b>	<b>SI</b>	<b>1146 /67%</b>
------------	-----------------	------------	-----------------	-----------	------------------

Production							39 dtrs 8 herds RIP 71%
ASI	kgP	P%	Milk	kgF	F%	Rel%	
295	44	0.44%	793	29	-0.07%	75	

Workability Traits		3 dtrs 3 herds Rel 72%
Milking Speed		102
Temperament		103
Likeability		105

Management Traits	
Cell Count	172 /65%
Mastitis Resistance	104 /86%
Survival	109 /63%
Daughter Fertility	115 /66%
Calving Ease	104 /96%
Gestation Length	-3 /97%
Heat Tolerance	96 /38%
Feed Saved	-81 /46%

Conformation				8 dtrs 2 herds Rel 68%
<b>Overall Type</b>	105	Loin Strength		103
<b>Mammary</b>	107	Heel Depth		99
<b>Dairy Strength</b>	102	Rear Leg Set		100
<b>Rump</b>	102	Rear Leg Rear View		101
<b>Feet &amp; Legs</b>	97	Udder Texture		104
Stature	104	Udder Depth		102
Bone Quality	105	Fore Attach		100
Angularity	100	Rear Udder Height		110
Muzzle Width	97	Rear Udder Width		104
Body Depth	102	Centre Ligament		106
Chest Width	100	Teat Place Front		102
Pin Width	107	Teat Place Rear		106
Pin Set	93	Teat Length		93

# REDGATE

Redcarpet x Superhero

RRP \$18.00

## Carenda Redgate

Sire:	Westcoast Redcarpet	Nasis:	12FFTMO
Dam:	Carenda Superhero Valid GP82	Beta Casein:	A22
Source:	Carenda Holsteins, Boyanup, WA	Kappa Casein:	AB
HB:	2125092		

REDCARPET



- Same family as Tirano, Sondolo & Varley
- Outcross Pedigree package
- Graduate from the Carenda Holsteins program

<b>BPI</b>	<b>438 /67%</b>	<b>HWI</b>	<b>500 /61%</b>	<b>SI</b>	<b>699 /64%</b>
------------	-----------------	------------	-----------------	-----------	-----------------

Production							0 dtrs 0 herds RIP 0%
ASI	kgP	P%	Milk	kgF	F%	Rel%	
150	9	0.27%	-185	34	0.61%	78	

Workability Traits		0 dtrs 0 herds Rel 70%
Milking Speed		103
Temperament		102
Likeability		104

Management Traits		
Cell Count	151 /68%	
Mastitis Resistance	104 /71%	
Survival	110 /56%	
Daughter Fertility	116 /53%	
Calving Ease	103 /71%	
Gestation Length	-3 /70%	
Heat Tolerance	98 /38%	
Feed Saved	-8 /44%	

Conformation				0 dtrs 0 herds Rel 65%
<b>Overall Type</b>	101	Loin Strength		97
<b>Mammary</b>	105	Heel Depth		105
<b>Dairy Strength</b>	99	Rear Leg Set		100
<b>Rump</b>	100	Rear Leg Rear View		98
<b>Feet &amp; Legs</b>	103	Udder Texture		100
Stature	98	Udder Depth		103
Bone Quality	106	Fore Attach		103
Angularity	98	Rear Udder Height		106
Muzzle Width	98	Rear Udder Width		104
Body Depth	98	Centre Ligament		101
Chest Width	98	Teat Place Front		99
Pin Width	105	Teat Place Rear		103
Pin Set	97	Teat Length		95

# RIZHAT

Manhattan x Montana

RRP \$22.00

## Emu Banks Rizhat

Sire:	Progenisis Manhattan	Nasis:	12FFUS3
Dam:	Westcoast Montana Riza 4700 VG85	Beta Casein:	A12
Source:	Emu Banks Holsteins, Terang, VIC	Kappa Casein:	
HB:	2181358		

Dam: Westcoast Montana Riza-ET



- NEW inclusion for 2023
- Outcross Pedigree package - Manhattan x Montana
- Full Brother to RIZMAN

<b>BPI</b>	<b>473 /66%</b>	<b>HWI</b>	<b>510 /60%</b>	<b>SI</b>	<b>790 /63%</b>
------------	-----------------	------------	-----------------	-----------	-----------------

Production							0 dtrs 0 herds RIP 0%
ASI	kgP	P%	Milk	kgF	F%	Rel%	
111	14	0.10%	332	21	0.10%	77	

Workability Traits		0 dtrs 0 herds Rel 68%
Milking Speed		104
Temperament		102
Likeability		105

Management Traits		
Cell Count	188 /67%	
Mastitis Resistance	112 /66%	
Survival	112 /56%	
Daughter Fertility	112 /56%	
Calving Ease	104 /69%	
Gestation Length	-3 /61%	
Heat Tolerance	105 /38%	
Feed Saved	-56 /42%	

Conformation				0 dtrs 0 herds Rel 62%
<b>Overall Type</b>	108	Loin Strength		102
<b>Mammary</b>	107	Heel Depth		104
<b>Dairy Strength</b>	99	Rear Leg Set		98
<b>Rump</b>	102	Rear Leg Rear View		96
<b>Feet &amp; Legs</b>	100	Udder Texture		100
Stature	102	Udder Depth		107
Bone Quality	100	Fore Attach		109
Angularity	98	Rear Udder Height		103
Muzzle Width	97	Rear Udder Width		102
Body Depth	100	Centre Ligament		103
Chest Width	98	Teat Place Front		106
Pin Width	100	Teat Place Rear		102
Pin Set	98	Teat Length		101

# RIZMAN

Manhattan x Montana



RRP \$24.00

## Emu Banks Rizman

Sire:	Progenisis Manhattan	Nasis:	12FFUR9
Dam:	Westcoast Montana Riza 4700 VG85	Beta Casein:	A22
Source:	Emu Banks Holsteins, Terang, VIC	Kappa Casein:	
HB:	2181356		



- NEW inclusion for 2023
- Outcross Pedigree package - Manhattan x Montana
- Available as a "Member Offer" sire

<b>BPI</b>	<b>460 /66%</b>	<b>HWI</b>	<b>535 /61%</b>	<b>SI</b>	<b>750 /63%</b>
------------	-----------------	------------	-----------------	-----------	-----------------

Production							0 dtrs 0 herds RIP 0%
ASI	kgP	P%	Milk	kgF	F%	Rel%	
122	13	0.15%	177	24	0.24%	77	

Workability Traits		0 dtrs 0 herds Rel 68%
Milking Speed		103
Temperament		103
Likeability		105

Management Traits		
Cell Count		166 /67%
Mastitis Resistance		106 /66%
Survival		112 /57%
Daughter Fertility		118 /57%
Calving Ease		103 /69%
Gestation Length		-5 /61%
Heat Tolerance		102 /38%
Feed Saved		-67 /42%

Conformation				0 dtrs 0 herds Rel 62%
<b>Overall Type</b>	106	Loin Strength		104
<b>Mammary</b>	105	Heel Depth		100
<b>Dairy Strength</b>	99	Rear Leg Set		99
<b>Rump</b>	104	Rear Leg Rear View		98
<b>Feet &amp; Legs</b>	99	Udder Texture		97
Stature	101	Udder Depth		106
Bone Quality	99	Fore Attach		107
Angularity	98	Rear Udder Height		102
Muzzle Width	97	Rear Udder Width		101
Body Depth	99	Centre Ligament		102
Chest Width	98	Teat Place Front		104
Pin Width	102	Teat Place Rear		103
Pin Set	99	Teat Length		98

# SILVERLINE

Silver x Fever

RRP \$20.00

## Glomar Silver 1717

Sire:	Seagull-Bay Silver	Nasis:	22FFM14
Dam:	Glomar Fever Lady 4634 EX90 1E	Beta Casein:	A12
Source:	Glomar Holsteins, Bundalaguah, VIC	Kappa Casein:	AA
HB:	1880201		



- Reliable and Daughter Proven
- Quality udders and Feet & Leg Improver
- High Semen Fertility Sire

<b>BPI</b>	<b>329 /94%</b>	<b>HWI</b>	<b>194 /89%</b>	<b>SI</b>	<b>732 /89%</b>
------------	-----------------	------------	-----------------	-----------	-----------------

Production							945 dtrs 104 herds RIP 23%
ASI	kgP	P%	Milk	kgF	F%	Rel%	
268	32	0.20%	785	57	0.34%	99	

Workability Traits		307 dtrs 48 herds Rel 97%
Milking Speed		103
Temperament		101
Likeability		103

Management Traits		
Cell Count		105 /99%
Mastitis Resistance		101 /99%
Survival		106 /97%
Daughter Fertility		94 /99%
Calving Ease		101 /99%
Gestation Length		2 /99%
Heat Tolerance		93 /38%
Feed Saved		-108 /61%

Conformation				358 dtrs 47 herds Rel 98%
<b>Overall Type</b>	108	Loin Strength		106
<b>Mammary</b>	113	Heel Depth		104
<b>Dairy Strength</b>	100	Rear Leg Set		92
<b>Rump</b>	106	Rear Leg Rear View		108
<b>Feet &amp; Legs</b>	110	Udder Texture		103
Stature	107	Udder Depth		100
Bone Quality	102	Fore Attach		100
Angularity	99	Rear Udder Height		114
Muzzle Width	97	Rear Udder Width		110
Body Depth	97	Centre Ligament		112
Chest Width	98	Teat Place Front		105
Pin Width	100	Teat Place Rear		108
Pin Set	105	Teat Length		95

# STARMAGIC

Manhattan x Durable

RRP \$30.00

Sexed \$62.00

## Poppe 3Star Magic Bull

Sire:	Progenesis Manhattan	Nasis:	90FFU38
Dam:	Gorgina	Beta Casein:	A22
Source:	GGI Germany	Kappa Casein:	
HB:	740221264		



- NEW Release sire with International appeal
- High Genetic Merit with a “No Holes” proof
- Quality outcross pedigree

<b>BPI</b>	<b>499 /65%</b>	<b>HWI</b>	<b>451 /59%</b>	<b>SI</b>	<b>897 /62%</b>
------------	-----------------	------------	-----------------	-----------	-----------------

Production							0 dtrs 0 herds RIP 0%
ASI	kgP	P%	Milk	kgF	F%	Rel%	
237	25	0.25%	433	50	0.45%	76	

Workability Traits		0 dtrs 0 herds Rel 65%
Milking Speed		102
Temperament		103
Likeability		105

Management Traits	
Cell Count	178 /66%
Mastitis Resistance	109 /66%
Survival	110 /53%
Daughter Fertility	107 /51%
Calving Ease	104 /66%
Gestation Length	-8 /62%
Heat Tolerance	102 /38%
Feed Saved	-102 /41%

Conformation				0 dtrs 0 herds Rel 61%
<b>Overall Type</b>	103	Loin Strength		104
<b>Mammary</b>	106	Heel Depth		100
<b>Dairy Strength</b>	97	Rear Leg Set		99
<b>Rump</b>	101	Rear Leg Rear View		104
<b>Feet &amp; Legs</b>	101	Udder Texture		96
Stature	103	Udder Depth		105
Bone Quality	105	Fore Attach		104
Angularity	100	Rear Udder Height		106
Muzzle Width	94	Rear Udder Width		105
Body Depth	96	Centre Ligament		101
Chest Width	94	Teat Place Front		104
Pin Width	102	Teat Place Rear		100
Pin Set	94	Teat Length		95

# SUPERDAVE

Superhero x Doorman

RRP \$22.00

4m Sexed \$55.00

SexedUltra™

## Warramont Superhero Dave

Sire:	Endco Superhero	Nasis:	12FFPCB
Dam:	Warramont Doorman Daybreak 10th VG87	Beta Casein:	A22
Source:	Warramont Holsteins, Mt Gambier, SA	Kappa Casein:	BB
HB:	2018418		



- Reliable and a farmer favourite for Likeability
- Huge milk components and ASI [Top 1% Breed]
- Tremendous Production & Strength

<b>BPI</b>	<b>348 /92%</b>	<b>HWI</b>	<b>259 /87%</b>	<b>SI</b>	<b>622 /87%</b>
------------	-----------------	------------	-----------------	-----------	-----------------

Production							730 dtrs 81 herds RIP 43%
ASI	kgP	P%	Milk	kgF	F%	Rel%	
257	22	0.51%	-176	44	0.75%	99	

Workability Traits		303 dtrs 38 herds Rel 97%
Milking Speed		100
Temperament		104
Likeability		106

Management Traits	
Cell Count	157 /98%
Mastitis Resistance	102 /99%
Survival	105 /81%
Daughter Fertility	103 /95%
Calving Ease	102 /99%
Gestation Length	-3 /99%
Heat Tolerance	95 /38%
Feed Saved	-116 /61%

Conformation				366 dtrs 42 herds Rel 98%
<b>Overall Type</b>	98	Loin Strength		97
<b>Mammary</b>	98	Heel Depth		89
<b>Dairy Strength</b>	102	Rear Leg Set		100
<b>Rump</b>	99	Rear Leg Rear View		102
<b>Feet &amp; Legs</b>	90	Udder Texture		100
Stature	100	Udder Depth		96
Bone Quality	98	Fore Attach		97
Angularity	102	Rear Udder Height		99
Muzzle Width	102	Rear Udder Width		101
Body Depth	101	Centre Ligament		98
Chest Width	103	Teat Place Front		101
Pin Width	103	Teat Place Rear		100
Pin Set	96	Teat Length		99

# SUPERDEW

RRP \$24.00

Kardew x Superhero

## Kaarmona Superdew

Sire:	Kaarmona Dewey	Nasis:	12FFUR8
Dam:	Kaarmona Superhero Carly 225 VG86	Beta Casein:	A22
Source:	Kaarmona Holsteins, Kaarimba, VIC	Kappa Casein:	
HB:	2175076		



- Exciting NEW arrival last spring
- Health and Reproduction improver
- Use to also improve General Appearance and Udder shape

<b>BPI</b>	<b>469 /66%</b>	<b>HWI</b>	<b>488 /61%</b>	<b>SI</b>	<b>787 /63%</b>
------------	-----------------	------------	-----------------	-----------	-----------------

Production							0 dtrs 0 herds RIP 0%
ASI	kgP	P%	Milk	kgF	F%	Rel%	
148	12	0.32%	-191	26	0.49%	77	

Workability Traits		0 dtrs 0 herds Rel 68%
Milking Speed		105
Temperament		104
Likeability		106

Management Traits	
Cell Count	160 /66%
Mastitis Resistance	108 /68%
Survival	111 /56%
Daughter Fertility	110 /56%
Calving Ease	100 /72%
Gestation Length	-3 /63%
Heat Tolerance	95 /38%
Feed Saved	27 /42%

Conformation				0 dtrs 0 herds Rel 62%
<b>Overall Type</b>	105	Loin Strength		100
<b>Mammary</b>	107	Heel Depth		102
<b>Dairy Strength</b>	99	Rear Leg Set		98
<b>Rump</b>	100	Rear Leg Rear View		103
<b>Feet &amp; Legs</b>	101	Udder Texture		103
Stature	99	Udder Depth		106
Bone Quality	103	Fore Attach		106
Angularity	98	Rear Udder Height		109
Muzzle Width	95	Rear Udder Width		102
Body Depth	99	Centre Ligament		102
Chest Width	99	Teat Place Front		101
Pin Width	104	Teat Place Rear		98
Pin Set	99	Teat Length		89

# SUPERPOWER

RRP \$26.00

4m Sexed \$55.00

SexedUltra

Powerball x Supersire

## Emu Banks Superpower

Sire:	View-Home Powerball P	Nasis:	12FFPAA
Dam:	Emu Banks Supersire 7784 GP83	Beta Casein:	A22
Source:	Emu Banks Holsteins, Terang, VIC	Kappa Casein:	AB
HB:	1983560		



- Latest Daughter Proven sire From Emu Banks
- High Production A22 Sire
- Quality package of Production, Health traits and Conformation

<b>BPI</b>	<b>424 /82%</b>	<b>HWI</b>	<b>425 /77%</b>	<b>SI</b>	<b>837 /77%</b>
------------	-----------------	------------	-----------------	-----------	-----------------

Production							69 dtrs 23 herds RIP 23%
ASI	kgP	P%	Milk	kgF	F%	Rel%	
230	31	0.47%	226	18	0.12%	90	

Workability Traits		43 dtrs 13 herds Rel 83%
Milking Speed		100
Temperament		102
Likeability		104

Management Traits	
Cell Count	145 /85%
Mastitis Resistance	104 /90%
Survival	106 /69%
Daughter Fertility	112 /83%
Calving Ease	102 /84%
Gestation Length	-4 /91%
Heat Tolerance	99 /38%
Feed Saved	-46 /53%

Conformation				32 dtrs 11 herds Rel 80%
<b>Overall Type</b>	105	Loin Strength		103
<b>Mammary</b>	102	Heel Depth		95
<b>Dairy Strength</b>	102	Rear Leg Set		103
<b>Rump</b>	104	Rear Leg Rear View		101
<b>Feet &amp; Legs</b>	96	Udder Texture		101
Stature	101	Udder Depth		99
Bone Quality	101	Fore Attach		102
Angularity	98	Rear Udder Height		102
Muzzle Width	105	Rear Udder Width		102
Body Depth	101	Centre Ligament		97
Chest Width	101	Teat Place Front		101
Pin Width	101	Teat Place Rear		94
Pin Set	101	Teat Length		99

# TALKING

Keeper P x Kingtut

RRP \$20.00  
4m Sexed \$55.00  
SexedUltra™

## Redmaw Keeper Talking 88

Sire:	Wil Keeper P	Nasis:	12FFTK8
Dam:	Redmaw Kingtut Jazz EX90 E1	Beta Casein:	A22
Source:	Redmaw Holsteins, Lockington, VIC	Kappa Casein:	BB
HB:	2127181		



- Balance of Production and Conformation
- Top 1% BPI, Top 1% HWI, Top 1% SI
- Calving Ease, Daughter Fertility and Cell Count improver

<b>BPI</b>	<b>479 /67%</b>	<b>HWI</b>	<b>525 /62%</b>	<b>SI</b>	<b>859 /65%</b>
------------	-----------------	------------	-----------------	-----------	-----------------

Production							0 dtrs 0 herds RIP 0%
ASI	kgP	P%	Milk	kgF	F%	Rel%	
157	17	0.29%	67	22	0.28%	78	

Workability Traits		0 dtrs 0 herds Rel 68%
Milking Speed		102
Temperament		99
Likeability		103

Management Traits		
Cell Count		172 /69%
Mastitis Resistance		109 /69%
Survival		112 /56%
Daughter Fertility		114 /55%
Calving Ease		102 /90%
Gestation Length		-4 /94%
Heat Tolerance		101 /38%
Feed Saved		21 /44%

Conformation				0 dtrs 0 herds Rel 65%
<b>Overall Type</b>	<b>103</b>	Loin Strength		<b>96</b>
<b>Mammary</b>	<b>103</b>	Heel Depth		<b>95</b>
<b>Dairy Strength</b>	<b>94</b>	Rear Leg Set		<b>104</b>
<b>Rump</b>	<b>101</b>	Rear Leg Rear View		<b>100</b>
<b>Feet &amp; Legs</b>	<b>96</b>	Udder Texture		<b>104</b>
Stature	99	Udder Depth		106
Bone Quality	99	Fore Attach		100
Angularity	93	Rear Udder Height		103
Muzzle Width	101	Rear Udder Width		100
Body Depth	91	Centre Ligament		105
Chest Width	98	Teat Place Front		103
Pin Width	103	Teat Place Rear		100
Pin Set	100	Teat Length		99

# TIRANO P

Jeronimo x Main Event

RRP \$22.00  
2.1m Sexed \$48.00  
SexedUltra™

## Carenda Tirano

Sire:	ABS Jeronimo	Nasis:	12FFSAG
Dam:	Carenda Mainevent Vanda EX90 1E	Beta Casein:	A12
Source:	Carenda Holsteins, Boyanup, WA	Kappa Casein:	BB
HB:	2069572		



- Health Trait specialist
- Calving Ease and Short Gestation choice
- Remains a great choice for polled genetics and maximising Profitability

<b>BPI</b>	<b>501 /70%</b>	<b>HWI</b>	<b>549 /65%</b>	<b>SI</b>	<b>809 /67%</b>
------------	-----------------	------------	-----------------	-----------	-----------------

Production							0 dtrs 0 herds RIP 0%
ASI	kgP	P%	Milk	kgF	F%	Rel%	
166	11	0.31%	-209	37	0.66%	79	

Workability Traits		0 dtrs 0 herds Rel 71%
Milking Speed		105
Temperament		101
Likeability		104

Management Traits		
Cell Count		179 /70%
Mastitis Resistance		108 /72%
Survival		110 /62%
Daughter Fertility		114 /65%
Calving Ease		102 /99%
Gestation Length		-8 /99%
Heat Tolerance		101 /38%
Feed Saved		32 /45%

Conformation				0 dtrs 0 herds Rel 67%
<b>Overall Type</b>	<b>101</b>	Loin Strength		<b>101</b>
<b>Mammary</b>	<b>106</b>	Heel Depth		<b>98</b>
<b>Dairy Strength</b>	<b>97</b>	Rear Leg Set		<b>99</b>
<b>Rump</b>	<b>103</b>	Rear Leg Rear View		<b>102</b>
<b>Feet &amp; Legs</b>	<b>101</b>	Udder Texture		<b>98</b>
Stature	100	Udder Depth		104
Bone Quality	107	Fore Attach		103
Angularity	99	Rear Udder Height		106
Muzzle Width	98	Rear Udder Width		106
Body Depth	97	Centre Ligament		102
Chest Width	96	Teat Place Front		101
Pin Width	100	Teat Place Rear		101
Pin Set	101	Teat Length		95

# TOMMYDEE

RRP \$20.00

Endgame x Alltime

Hindlee Tommy Dee 20 10 ET

Sire:	Winaview Superhero Avenger	Nasis:	12FFTL0
Dam:	Hindlee Royal Alltime 17069 GP81	Beta Casein:	A22
Source:	Hindlee Holsteins, Smithton, TAS	Kappa Casein:	AB
HB:	2125339		



- Production and Health trait specialist
- Extreme milk components
- Total outcross pedigree

<b>BPI</b>	<b>494 /67%</b>	<b>HWI</b>	<b>515 /62%</b>	<b>SI</b>	<b>839 /64%</b>
------------	-----------------	------------	-----------------	-----------	-----------------

Production							0 dtrs 0 herds RIP 0%
ASI	kgP	P%	Milk	kgF	F%	Rel%	
202	16	0.46%	-296	33	0.66%	77	

Workability Traits		0 dtrs 0 herds Rel 67%
Milking Speed		102
Temperament		103
Likeability		103

Management Traits		
Cell Count	175 /67%	
Mastitis Resistance	108 /72%	
Survival	109 /58%	
Daughter Fertility	113 /58%	
Calving Ease	105 /89%	
Gestation Length	-1 /93%	
Heat Tolerance	100 /38%	
Feed Saved	31 /44%	

Conformation				0 dtrs 0 herds Rel 64%
<b>Overall Type</b>	100	Loin Strength		95
<b>Mammary</b>	102	Heel Depth		98
<b>Dairy Strength</b>	94	Rear Leg Set		106
<b>Rump</b>	100	Rear Leg Rear View		99
<b>Feet &amp; Legs</b>	96	Udder Texture		96
Stature	99	Udder Depth		104
Bone Quality	102	Fore Attach		103
Angularity	92	Rear Udder Height		103
Muzzle Width	100	Rear Udder Width		99
Body Depth	95	Centre Ligament		100
Chest Width	99	Teat Place Front		103
Pin Width	99	Teat Place Rear		100
Pin Set	102	Teat Length		94

# VARLEY

Pemberton x Superhero

RRP \$28.00

2.1m Sexed \$50.00

SexedUltra 4m Sexed \$58.00

Carenda Varley

Sire:	Carenda Pemberton	Nasis:	12FFTL2
Dam:	Carenda Superhero Verlo VG86	Beta Casein:	A22
Source:	Carenda Holsteins, Boyanup, WA	Kappa Casein:	BB
HB:	2121933		



- The most balanced bull amongst the Holstein line-up
- Top 1% BPI, Top 1% HWI, Top 1% SI
- Improved Production, Conformation and Dairy Strength

<b>BPI</b>	<b>504 /69%</b>	<b>HWI</b>	<b>466 /64%</b>	<b>SI</b>	<b>914 /66%</b>
------------	-----------------	------------	-----------------	-----------	-----------------

Production							0 dtrs 0 herds RIP 0%
ASI	kgP	P%	Milk	kgF	F%	Rel%	
242	30	0.49%	151	25	0.27%	79	

Workability Traits		0 dtrs 0 herds Rel 71%
Milking Speed		102
Temperament		106
Likeability		107

Management Traits		
Cell Count	172 /70%	
Mastitis Resistance	106 /72%	
Survival	109 /60%	
Daughter Fertility	108 /62%	
Calving Ease	103 /96%	
Gestation Length	1 /97%	
Heat Tolerance	91 /38%	
Feed Saved	-98 /45%	

Conformation				0 dtrs 0 herds Rel 67%
<b>Overall Type</b>	109	Loin Strength		103
<b>Mammary</b>	110	Heel Depth		95
<b>Dairy Strength</b>	105	Rear Leg Set		98
<b>Rump</b>	104	Rear Leg Rear View		99
<b>Feet &amp; Legs</b>	98	Udder Texture		101
Stature	107	Udder Depth		104
Bone Quality	99	Fore Attach		105
Angularity	104	Rear Udder Height		107
Muzzle Width	101	Rear Udder Width		107
Body Depth	103	Centre Ligament		108
Chest Width	103	Teat Place Front		105
Pin Width	110	Teat Place Rear		104
Pin Set	97	Teat Length		103

# VISSLA P

Magicball x Superhero

RRP \$24.00

## Carenda Vissla

Sire:	Peak Magic Ball PP	Nasis:	12FFUR6
Dam:	Carenda Superhero Vero VG85	Beta Casein:	A12
Source:	Carenda Holsteins, Boyanup, WA	Kappa Casein:	
HB:	2168251		

VISSLA



- A great choice for polled genetics and maximising Profitability
- Impressive farmer workability traits
- Use to also improve General Appearance and Udder shape

<b>BPI</b>	<b>479 /66%</b>	<b>HWI</b>	<b>506 /60%</b>	<b>SI</b>	<b>693 /63%</b>
------------	-----------------	------------	-----------------	-----------	-----------------

Production							0 dtrs 0 herds RIP 0%
ASI	kgP	P%	Milk	kgF	F%	Rel%	
182	10	0.40%	-441	39	0.84%	77	

Workability Traits		0 dtrs 0 herds Rel 67%
Milking Speed		103
Temperament		104
Likeability		105

Management Traits		
Cell Count	162 /67%	
Mastitis Resistance	107 /68%	
Survival	109 /54%	
Daughter Fertility	116 /52%	
Calving Ease	104 /72%	
Gestation Length	-3 /69%	
Heat Tolerance	101 /38%	
Feed Saved	-85 /42%	

Conformation				0 dtrs 0 herds Rel 62%
<b>Overall Type</b>	104	Loin Strength		100
<b>Mammary</b>	106	Heel Depth		99
<b>Dairy Strength</b>	98	Rear Leg Set		105
<b>Rump</b>	101	Rear Leg Rear View		103
<b>Feet &amp; Legs</b>	97	Udder Texture		100
Stature	101	Udder Depth		105
Bone Quality	103	Fore Attach		108
Angularity	98	Rear Udder Height		106
Muzzle Width	97	Rear Udder Width		102
Body Depth	100	Centre Ligament		102
Chest Width	100	Teat Place Front		102
Pin Width	102	Teat Place Rear		100
Pin Set	99	Teat Length		100

# VITTORIA PP RED

CFP x Mission

RRP \$28.00

## Carenda Vittoria

Sire:	Vogue CFP PP RC	Nasis:	12FFUS2
Dam:	Carenda Mission Vittoria GP84	Beta Casein:	A22
Source:	Carenda Holsteins, Boyanup, WA	Kappa Casein:	
HB:	2145960		

Sire: CFP



- NEW inclusion for 2023
- RED Holstein as well as Homozygous POLLED - PP
- Graduate from the Carenda Holsteins program

<b>BPI</b>	<b>439 /66%</b>	<b>HWI</b>	<b>413 /60%</b>	<b>SI</b>	<b>793 /63%</b>
------------	-----------------	------------	-----------------	-----------	-----------------

Production							0 dtrs 0 herds RIP 0%
ASI	kgP	P%	Milk	kgF	F%	Rel%	
223	22	0.42%	3	35	0.50%	77	

Workability Traits		0 dtrs 0 herds Rel 65%
Milking Speed		102
Temperament		102
Likeability		104

Management Traits		
Cell Count	149 /67%	
Mastitis Resistance	106 /67%	
Survival	108 /53%	
Daughter Fertility	109 /51%	
Calving Ease	101 /70%	
Gestation Length	-5 /69%	
Heat Tolerance	97 /38%	
Feed Saved	-38 /42%	

Conformation				0 dtrs 0 herds Rel 62%
<b>Overall Type</b>	103	Loin Strength		102
<b>Mammary</b>	102	Heel Depth		97
<b>Dairy Strength</b>	99	Rear Leg Set		103
<b>Rump</b>	101	Rear Leg Rear View		103
<b>Feet &amp; Legs</b>	99	Udder Texture		98
Stature	106	Udder Depth		106
Bone Quality	102	Fore Attach		103
Angularity	100	Rear Udder Height		104
Muzzle Width	102	Rear Udder Width		98
Body Depth	98	Centre Ligament		103
Chest Width	98	Teat Place Front		99
Pin Width	97	Teat Place Rear		104
Pin Set	99	Teat Length		101

# YOLO

Bandares x Meridian

RRP Sexed Only  
4m Sexed \$65.00  
SexedUltra™

## BGP Yolo

Sire:	Wa-Del Yoder Bandares	Nasis:	80FFPBZ
Dam:	View-Home Meridian Iowa VG86	Beta Casein:	A22
Source:	Jetstream Genetics, Wisconsin, USA	Kappa Casein:	BB
HB:	3145398965		

Dtr: Stantons Yolo Approved



- Daughters beginning to calve... Impressive Performance sire
- Top 1% BPI, Top 1% HWI, Top 1% SI
- High Production and outstanding Conformation sire

<b>BPI</b>	<b>558 /68%</b>	<b>HWI</b>	<b>541 /65%</b>	<b>SI</b>	<b>1037 /66%</b>
------------	-----------------	------------	-----------------	-----------	------------------

Production							16 dtrs 3 herds RIP 12%
ASI	kgP	P%	Milk	kgF	F%	Rel%	
226	25	0.09%	752	57	0.36%	75	

Workability Traits		12 dtrs 3 herds Rel 65%
Milking Speed		105
Temperament		101
Likeability		105

Management Traits		
Cell Count		174 /68%
Mastitis Resistance		110 /65%
Survival		112 /67%
Daughter Fertility		108 /70%
Calving Ease		103 /92%
Gestation Length		-2 /87%
Heat Tolerance		101 /38%
Feed Saved		-20 /48%

Conformation				11 dtrs 4 herds Rel 69%
<b>Overall Type</b>	110	Loin Strength		103
<b>Mammary</b>	111	Heel Depth		101
<b>Dairy Strength</b>	102	Rear Leg Set		107
<b>Rump</b>	103	Rear Leg Rear View		105
<b>Feet &amp; Legs</b>	101	Udder Texture		102
Stature	99	Udder Depth		106
Bone Quality	100	Fore Attach		106
Angularity	98	Rear Udder Height		109
Muzzle Width	105	Rear Udder Width		102
Body Depth	96	Centre Ligament		111
Chest Width	101	Teat Place Front		107
Pin Width	108	Teat Place Rear		109
Pin Set	104	Teat Length		91

## WINTER RELEASE YOUNG SIRES

**Genetocs**  
AUSTRALIA  
Breeding better Australian herds

Numeralla A2P2 Illuminator P

## ILLUMINATOR P

A2P2 x Delta

A22

<b>BPI</b>	<b>461 /65%</b>	<b>HWI</b>	<b>428 /59%</b>	<b>SI</b>	<b>743 /62%</b>
------------	-----------------	------------	-----------------	-----------	-----------------

### Production

ASI	kgP	P%	Milk	kgF	F%	Rel%
229	17	0.45%	-261	45	0.81%	78

### Health

Cell Count	Mastitis Res	Dtr Fertility	Gestation	Calving Ease	Survival	Heat Tol
67	105	110	-2	101	109	95

Type	Overall Type	106	Mammary	107
------	--------------	-----	---------	-----

Sire:	Vogue A2P2
Dam:	Numeralla Delta 1427 VG85
Breeder:	Numeralla, Grassmere, VIC, 3281
Nasis:	12FFVR2

Winaview Fender

## FENDER

Rocknroll x Banderes

A22

<b>BPI</b>	<b>516 /66%</b>	<b>HWI</b>	<b>531 /60%</b>	<b>SI</b>	<b>771 /63%</b>
------------	-----------------	------------	-----------------	-----------	-----------------

### Production

ASI	kgP	P%	Milk	kgF	F%	Rel%
192	6	0.32%	-401	56	1.06%	77

### Health

Cell Count	Mastitis Res	Dtr Fertility	Gestation	Calving Ease	Survival	Heat Tol
179	109	113	-1	102	110	96

Type	Overall Type	106	Mammary	103
------	--------------	-----	---------	-----

Sire:	Westcoast Rocknroll
Dam:	Vala Banderes Loca VG86
Breeder:	Winaview Holsteins, Warragul, VIC
Nasis:	12FFVR4

In planning for the next generation, we look forward to making this exciting pair of young sires available to members across the winter period of 2023



CUE-MATE® DELIVERS  
**MORE**  
 CALVES. GAINS. PROFITS.

Order 100 doses  
 of semen and 100  
 Cue-Mate® devices  
 and receive a



**45L TECHNI-ICE ESKY**

Order with your Genetics Australia Sales Representative  
 or Local Distributor using the offer code GA ESKY

Available from  
**Genetics AUSTRALIA**

Can't find exactly what you are looking for?  
 Visit [repro360.com.au](http://repro360.com.au) or get in touch with one of  
 our experts 1300 163 056



Repro360 Help Line: 1800 032 355 | [vetoquinol.com.au](http://vetoquinol.com.au)



Cue-Mate® is a registered trademark of Vetoquinol.  
 Vetoquinol recommends working with a registered Veterinarian for the prescription of scheduled drugs.

**Repro360.com.au**

Terms and Conditions: Minimum total order value RRP \$4,000.00. Limit one (1) esky per business. Limit one (1) esky per eligible order. 100 CueMate Ready-To-Use (RTU) Devices and 100 units of semen must be ordered at the same time to be eligible. Offer ends 30th June 2023. Offer valid while stocks last



# THE SOLUTION

to increase your profitability

- Low Birth Weight
- Excellent Growth Rates
- Calving Ease
- Profitable Sires
- High Quality Semen
- Short Gestation Length

Wirruna POLL HEREFORD


## PATON P048



CE Dir	CE Dtrs	GL	BWT	200	400
8.9	8.4	-4.6	3.1	45	72
59%	50%	89%	80%	78%	80%

Steggles SPECKLE PARK


## PABLO P4



GL	BWT	200	400
0.2	1.2	12	23
41%	50%	47%	46%

Alpine ANGUS

## MAIN EVENT Q192



CE Dir	CE Dtrs	GL	BWT	200	400
9.1	4.0	-11.9	2.6	44	84
56%	44%	73%	73%	73%	73%

*We understand not every dairy cow is needed to breed a future dairy replacement.*

*Genetics Australia provides the tools for you to make other profitable decisions utilizing DairyBeefX female sorted semen...*

**Speckle Park and Angus Sexed FEMALE From \$54.00**

ANGUS | SPECKLE PARK | CHAROLAIS | MURRAY GREY | HEREFORD | WAGYU | SIMMENTAL

Vogue A2P2 PP

# A2P2 PP

Luster x Duke

Kappa Casein: AB Beta Casein: A22



Dam, Silverridge Duke Elsa P

<b>TPI</b>	<b>2725</b>	<b>Net Merit \$</b>	<b>536</b>
<b>Health</b>		<b>Production</b>	
PTA DPR	-1.9	PTA Milk	603
PL	0.1	PTA Fat	94
SCE	2.2	% Fat	0.25
SCR	0	PTA Pro	37
SCS	2.8	% Pro	0.06

0 dtrs 0 herds 82% rel

Stature	Short				2.11	Tall
Strength	Narrow				1.69	Wide
Body Depth	Shallow				1.81	Deep
Dairyness	Thick				2.17	Angular
Rump (side View)	High Pins				1.62	Sloped
Rump Width	Narrow				2.42	Wide
Rear Leg (Side View)	Posty				0.42	Sickled
Rear Leg (Rear View)	Hock In				1.29	Straight
Foot Angle	Low Angle				0.97	Steep Angle
Foot & Leg Score	Low				1.17	High
Fore Udder	Loose				2.67	Strong
Rear Udder Height	Low				3.06	High
Rear Udder Width	Narrow				3.43	Wide
Suspensory Ligament	Weak				1.10	Strong
Udder Depth	Deep				1.65	Shallow
Teats (Front View)	Wide				0.85	Close
Teats (Rear View)	Wide				1.04	Close
Test Length	Short				-0.15	Long

0 dtrs 0 herds 81% rel

Vogue CFP PP

# CFP PP RC

Drastic x Splendid

Kappa Casein: Beta Casein: A22



CFP PP RC

<b>TPI</b>	<b>2582</b>	<b>Net Merit \$</b>	<b>550</b>
<b>Health</b>		<b>Production</b>	
PTA DPR	-1.4	PTA Milk	111
PL	0.2	PTA Fat	81
SCE	1.9	% Fat	0.27
SCR	0	PTA Pro	35
SCS	2.97	% Pro	0.11

0 dtrs 0 herds 82% rel

Stature	Short				2.08	Tall
Strength	Narrow				-0.21	Wide
Body Depth	Shallow				0.38	Deep
Dairyness	Thick				1.88	Angular
Rump (side View)	High Pins				1.99	Sloped
Rump Width	Narrow				0.63	Wide
Rear Leg (Side View)	Posty				0.55	Sickled
Rear Leg (Rear View)	Hock In				-0.24	Straight
Foot Angle	Low Angle				0.42	Steep Angle
Foot & Leg Score	Low				0.70	High
Fore Udder	Loose				2.09	Strong
Rear Udder Height	Low				1.97	High
Rear Udder Width	Narrow				1.35	Wide
Suspensory Ligament	Weak				0.55	Strong
Udder Depth	Deep				2.33	Shallow
Teats (Front View)	Wide				0.73	Close
Teats (Rear View)	Wide				0.37	Close
Test Length	Short				-0.14	Long

0 dtrs 0 herds 80% rel

Vala 2020 Escher PP

# ESCHER PP

2020 x Luster P

Kappa Casein: AB Beta Casein: A22



ESCHER

<b>TPI</b>	<b>2712</b>	<b>Net Merit \$</b>	<b>652</b>
<b>Health</b>		<b>Production</b>	
PTA DPR	-1.1	PTA Milk	1215
PL	0.4	PTA Fat	78
SCE	2.1	% Fat	0.11
SCR	0	PTA Pro	57
SCS	3.17	% Pro	0.07

0 dtrs 0 herds 79% rel

Stature	Short				1.47	Tall
Strength	Narrow				0.31	Wide
Body Depth	Shallow				0.98	Deep
Dairyness	Thick				2.54	Angular
Rump (side View)	High Pins				-0.35	Sloped
Rump Width	Narrow				1.86	Wide
Rear Leg (Side View)	Posty				0.87	Sickled
Rear Leg (Rear View)	Hock In				-0.05	Straight
Foot Angle	Low Angle				0.14	Steep Angle
Foot & Leg Score	Low				0.52	High
Fore Udder	Loose				2.37	Strong
Rear Udder Height	Low				3.09	High
Rear Udder Width	Narrow				3.31	Wide
Suspensory Ligament	Weak				0.52	Strong
Udder Depth	Deep				1.46	Shallow
Teats (Front View)	Wide				0.15	Close
Teats (Rear View)	Wide				0.23	Close
Test Length	Short				0.74	Long

0 dtrs 0 herds 78% rel

Coldsprings All-Gone PP

# GONE PP

Allday-PP x Basic

Kappa Casein: Beta Casein: A22



GONEPP

<b>TPI</b>	<b>2693</b>	<b>Net Merit \$</b>	<b>539</b>
<b>Health</b>		<b>Production</b>	
PTA DPR	-0.2	PTA Milk	860
PL	2.1	PTA Fat	58
SCE	1.7	% Fat	0.09
SCR	0	PTA Pro	29
SCS	2.77	% Pro	0.01

0 dtrs 0 herds 79% rel

Stature	Short				1.69	Tall
Strength	Narrow				0.81	Wide
Body Depth	Shallow				0.71	Deep
Dairyness	Thick				1.21	Angular
Rump (side View)	High Pins				-0.42	Sloped
Rump Width	Narrow				1.37	Wide
Rear Leg (Side View)	Posty				0.17	Sickled
Rear Leg (Rear View)	Hock In				1.27	Straight
Foot Angle	Low Angle				1.56	Steep Angle
Foot & Leg Score	Low				1.68	High
Fore Udder	Loose				2.99	Strong
Rear Udder Height	Low				3.61	High
Rear Udder Width	Narrow				3.35	Wide
Suspensory Ligament	Weak				1.44	Strong
Udder Depth	Deep				2.35	Shallow
Teats (Front View)	Wide				1.17	Close
Teats (Rear View)	Wide				1.52	Close
Test Length	Short				-0.23	Long

0 dtrs 0 herds 78% rel

Wil Kitami PP

# KITAMI PP RC

Hotspot x Mr Salvatore

Kappa Casein: BE Beta Casein: A12

<b>BPI</b> 382/67%	<b>ASI</b> 137/77%	<b>Mas Res</b>	<b>105/70%</b>	<b>Dtr Fert</b>	<b>109/59%</b>	<b>RRP \$28.00</b>
--------------------	--------------------	----------------	----------------	-----------------	----------------	--------------------

<b>Sire:</b> Wil Hotspot P	<b>PTA Type</b> 1.56	<b>UDC</b> 1.34	<b>FLC</b> 0.99
<b>Dam:</b> Wil Kysa VG85	0 dtrs 0 herds 79% rel		



MGD, Wilder Kysu

<b>TPI</b>	<b>Net Merit \$</b>
2644	606
<b>Health</b>	
PTA DPR 0.1	PTA Milk 835
PL 3.9	PTA Fat 45
SCE 1.8	% Fat 0.04
SCR 2.7	PTA Pro 44
SCS 2.92	% Pro 0.06
0 dtrs 0 herds 81% rel	

Stature	Short				0.92	Tall
Strength	Narrow				0.39	Wide
Body Depth	Shallow				0.52	Deep
Dairyness	Thick				0.71	Angular
Rump (side View)	High Pins				-0.57	Sloped
Rump Width	Narrow				0.54	Wide
Rear Leg (Side View)	Posty				-0.43	Sickled
Rear Leg (Rear View)	Hock In				1.16	Straight
Foot Angle	Low Angle				0.91	Steep Angle
Foot & Leg Score	Low				1.12	High
Fore Udder	Loose				2.27	Strong
Rear Udder Height	Low				1.60	High
Rear Udder Width	Narrow				1.86	Wide
Suspensory Ligament	Weak				0.18	Strong
Udder Depth	Deep				1.43	Shallow
Teats (Front View)	Wide				0.16	Close
Teats (Rear View)	Wide				-0.16	Close
Test Length	Short				0.88	Long

Vala CFP Lemonade

# LEMONADE PP

CFP x Delta

Kappa Casein: BB Beta Casein: A22

<b>BPI</b> 417/66%	<b>ASI</b> 206/77%	<b>Mas Res</b>	<b>103/67%</b>	<b>Dtr Fert</b>	<b>109/53%</b>	<b>RRP \$24.00</b>
--------------------	--------------------	----------------	----------------	-----------------	----------------	--------------------

<b>Sire:</b> Vogue CFP PP RC	<b>PTA Type</b> 1.02	<b>UDC</b> 1.51	<b>FLC</b> -0.15
<b>Dam:</b> Drewholme Delta Leisure VG85	0 dtrs 0 herds 78% rel		



LEMONADE

<b>TPI</b>	<b>Net Merit \$</b>
2599	616
<b>Health</b>	
PTA DPR -0.5	PTA Milk 20
PL 1.6	PTA Fat 83
SCE 2	% Fat 0.29
SCR 3	PTA Pro 31
SCS 3	% Pro 0.11
0 dtrs 0 herds 80% rel	

Stature	Short				0.86	Tall
Strength	Narrow				-0.32	Wide
Body Depth	Shallow				-0.03	Deep
Dairyness	Thick				1.45	Angular
Rump (side View)	High Pins				1.19	Sloped
Rump Width	Narrow				0.62	Wide
Rear Leg (Side View)	Posty				1.06	Sickled
Rear Leg (Rear View)	Hock In				-0.51	Straight
Foot Angle	Low Angle				-0.04	Steep Angle
Foot & Leg Score	Low				0.25	High
Fore Udder	Loose				1.97	Strong
Rear Udder Height	Low				2.21	High
Rear Udder Width	Narrow				1.72	Wide
Suspensory Ligament	Weak				0.21	Strong
Udder Depth	Deep				1.57	Shallow
Teats (Front View)	Wide				0.42	Close
Teats (Rear View)	Wide				-0.07	Close
Test Length	Short				-0.39	Long

Vogue Nipit PP

# NIPIT PP RC

Hotspot x Splendid

Kappa Casein: BB Beta Casein: A22

<b>BPI</b> 430/67%	<b>ASI</b> 219/78%	<b>Mas Res</b>	<b>105/70%</b>	<b>Dtr Fert</b>	<b>106/58%</b>	<b>RRP \$28.00</b>
--------------------	--------------------	----------------	----------------	-----------------	----------------	--------------------

<b>Sire:</b> Wil Hotspot P	<b>PTA Type</b> 1.86	<b>UDC</b> 1.74	<b>FLC</b> 0.66
<b>Dam:</b> Vogue Splendid Samara PP VG86	0 dtrs 0 herds 80% rel		



NIPIT

<b>TPI</b>	<b>Net Merit \$</b>
2671	581
<b>Health</b>	
PTA DPR -0.7	PTA Milk 488
PL 1.1	PTA Fat 68
SCE 2.7	% Fat 0.17
SCR 3.08	PTA Pro 50
SCS 3.08	% Pro 0.12
0 dtrs 0 herds 82% rel	

Stature	Short				2.23	Tall
Strength	Narrow				-0.1	Wide
Body Depth	Shallow				0.81	Deep
Dairyness	Thick				2.05	Angular
Rump (side View)	High Pins				0.06	Sloped
Rump Width	Narrow				1.15	Wide
Rear Leg (Side View)	Posty				-0.34	Sickled
Rear Leg (Rear View)	Hock In				0.49	Straight
Foot Angle	Low Angle				0.74	Steep Angle
Foot & Leg Score	Low				1.28	High
Fore Udder	Loose				2.67	Strong
Rear Udder Height	Low				2.23	High
Rear Udder Width	Narrow				1.79	Wide
Suspensory Ligament	Weak				0.70	Strong
Udder Depth	Deep				3.06	Shallow
Teats (Front View)	Wide				0.24	Close
Teats (Rear View)	Wide				0.15	Close
Test Length	Short				0.45	Long

Vala 2020 Emmett P

# EMMETT P

2020 x Luster P

Kappa Casein: AB Beta Casein: A22

<b>BPI</b> 388/65%	<b>ASI</b> 189/77%	<b>Mas Res</b>	<b>104/66%</b>	<b>Dtr Fert</b>	<b>105/50%</b>	<b>RRP \$25.00</b>
--------------------	--------------------	----------------	----------------	-----------------	----------------	--------------------

<b>Sire:</b> Vogue 2020 P	<b>PTA Type</b> 1.57	<b>UDC</b> 1.69	<b>FLC</b> -0.22
<b>Dam:</b> Vogue Luster Esteem	0 dtrs 0 herds 78% rel		



EMMETT P

<b>TPI</b>	<b>Net Merit \$</b>
2773	737
<b>Health</b>	
PTA DPR -0.6	PTA Milk 1291
PL 0.7	PTA Fat 91
SCE 2.2	% Fat 0.14
SCR 3.09	PTA Pro 57
SCS 3.09	% Pro 0.06
0 dtrs 0 herds 79% rel	

Stature	Short				1.62	Tall
Strength	Narrow				0.12	Wide
Body Depth	Shallow				0.94	Deep
Dairyness	Thick				2.62	Angular
Rump (side View)	High Pins				1.09	Sloped
Rump Width	Narrow				1.01	Wide
Rear Leg (Side View)	Posty				0.62	Sickled
Rear Leg (Rear View)	Hock In				-0.38	Straight
Foot Angle	Low Angle				-0.03	Steep Angle
Foot & Leg Score	Low				0.31	High
Fore Udder	Loose				1.75	Strong
Rear Udder Height	Low				2.58	High
Rear Udder Width	Narrow				2.84	Wide
Suspensory Ligament	Weak				1.19	Strong
Udder Depth	Deep				1.08	Shallow
Teats (Front View)	Wide				1.07	Close
Teats (Rear View)	Wide				1.24	Close
Test Length	Short				0.58	Long

Peak Davis ET

# DAVIS

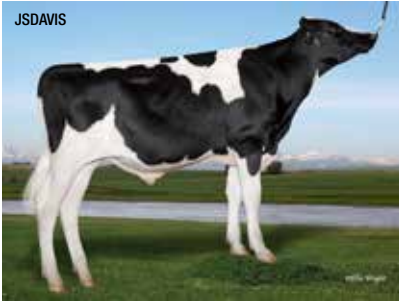
Positive x Jedi

Kappa Casein: Beta Casein: A12

<b>BPI</b>	<b>355/67%</b>	<b>ASI</b>	<b>166/77%</b>	<b>Mas Res</b>	<b>106/69%</b>	<b>Dtr Fert</b>	<b>103/58%</b>	<b>RRP \$26.00</b>
------------	----------------	------------	----------------	----------------	----------------	-----------------	----------------	--------------------

<b>Sire:</b>	Progenesis Positive	<b>PTA Type</b>	<b>UDC</b>	<b>FLC</b>
<b>Dam:</b>	Peak Millennia	<b>1.66</b>	<b>1.86</b>	<b>0.07</b>

0 dtrs 0 herds 81% rel



JSDAVIS

<b>TPI</b>	<b>2763</b>	<b>Net Merit \$</b>	<b>717</b>
<b>Health</b>		<b>Production</b>	
PTA DPR	-0.5	PTA Milk	575
PL	3.4	PTA Fat	87
SCE	1.9	% Fat	0.23
SCR		PTA Pro	39
SCS	2.84	% Pro	0.07

0 dtrs 0 herds 82% rel

Stature	Short				1.57	Tall
Strength	Narrow				0.74	Wide
Body Depth	Shallow				0.95	Deep
Dairyness	Thick				2.01	Angular
Rump (side View)	High Pins				1.27	Sloped
Rump Width	Narrow				0.59	Wide
Rear Leg (Side View)	Posty				-0.24	Sickled
Rear Leg (Rear View)	Hock In				-0.09	Straight
Foot Angle	Low Angle				0.88	Steep Angle
Foot & Leg Score	Low				0.50	High
Fore Udder	Loose				2.29	Strong
Rear Udder Height	Low				2.22	High
Rear Udder Width	Narrow				2.59	Wide
Suspensory Ligament	Weak				1.71	Strong
Udder Depth	Deep				1.70	Shallow
Teats (Front View)	Wide				1.99	Close
Teats (Rear View)	Wide				2.19	Close
Test Length	Short				-0.93	Long

Fustead Goldwyn Guthrie-ET

# GUTHRIE

Goldwyn x Blitz

Kappa Casein: Beta Casein: A12

<b>BPI</b>	<b>238/95%</b>	<b>ASI</b>	<b>80/99%</b>	<b>Mas Res</b>	<b>103/99%</b>	<b>Dtr Fert</b>	<b>101/99%</b>	<b>RRP \$20.00</b>
------------	----------------	------------	---------------	----------------	----------------	-----------------	----------------	--------------------

<b>Sire:</b>	Braedale Goldwyn	<b>PTA Type</b>	<b>UDC</b>	<b>FLC</b>
<b>Dam:</b>	Regancrest-Mws Brit EX90	<b>1.87</b>	<b>1.67</b>	<b>0.81</b>

10079 dtrs 2656 herds 99% rel



Guthrie daughter

<b>TPI</b>	<b>2022</b>	<b>Net Merit \$</b>	<b>-66</b>
<b>Health</b>		<b>Production</b>	
PTA DPR	-0.9	PTA Milk	-414
PL	-0.7	PTA Fat	-3
SCE	1.9	% Fat	0.05
SCR	-3.2	PTA Pro	-3
SCS	2.94	% Pro	0.04

29003 dtrs 5119 herds 99% rel

Stature	Short				1.50	Tall
Strength	Narrow				0.36	Wide
Body Depth	Shallow				1.12	Deep
Dairyness	Thick				2.19	Angular
Rump (side View)	High Pins				0.65	Sloped
Rump Width	Narrow				2.71	Wide
Rear Leg (Side View)	Posty				1.74	Sickled
Rear Leg (Rear View)	Hock In				0.78	Straight
Foot Angle	Low Angle				0.67	Steep Angle
Foot & Leg Score	Low				1.26	High
Fore Udder	Loose				1.99	Strong
Rear Udder Height	Low				1.96	High
Rear Udder Width	Narrow				3.05	Wide
Suspensory Ligament	Weak				2.53	Strong
Udder Depth	Deep				0.60	Shallow
Teats (Front View)	Wide				1.27	Close
Teats (Rear View)	Wide				1.50	Close
Test Length	Short				0.41	Long

Peak Jagger

# JAGGER

Hunk x Doc

Kappa Casein: AB Beta Casein: A12

<b>BPI</b>	<b>334/66%</b>	<b>ASI</b>	<b>156/77%</b>	<b>Mas Res</b>	<b>104/67%</b>	<b>Dtr Fert</b>	<b>103/54%</b>	<b>RRP \$35.00</b> <b>SEXED \$65.00</b>
------------	----------------	------------	----------------	----------------	----------------	-----------------	----------------	--

<b>Sire:</b>	Siemers Hunk	<b>PTA Type</b>	<b>UDC</b>	<b>FLC</b>
<b>Dam:</b>	Cedarwal Jitters VG88	<b>3.72</b>	<b>2.93</b>	<b>2.04</b>

0 dtrs 0 herds 81% rel



JSJAGGER

<b>TPI</b>	<b>2702</b>	<b>Net Merit \$</b>	<b>428</b>
<b>Health</b>		<b>Production</b>	
PTA DPR	-1	PTA Milk	56
PL	1.9	PTA Fat	56
SCE	2.6	% Fat	0.19
SCR	-2.7	PTA Pro	27
SCS	2.86	% Pro	0.09

0 dtrs 0 herds 81% rel

Stature	Short				4.19	Tall
Strength	Narrow				2.44	Wide
Body Depth	Shallow				2.47	Deep
Dairyness	Thick				2.12	Angular
Rump (side View)	High Pins				0.32	Sloped
Rump Width	Narrow				2.81	Wide
Rear Leg (Side View)	Posty				-0.54	Sickled
Rear Leg (Rear View)	Hock In				3.00	Straight
Foot Angle	Low Angle				3.22	Steep Angle
Foot & Leg Score	Low				2.68	High
Fore Udder	Loose				3.67	Strong
Rear Udder Height	Low				4.43	High
Rear Udder Width	Narrow				4.50	Wide
Suspensory Ligament	Weak				2.29	Strong
Udder Depth	Deep				3.19	Shallow
Teats (Front View)	Wide				1.72	Close
Teats (Rear View)	Wide				2.13	Close
Test Length	Short				-0.51	Long

All Nure Secretariat

# SECRETARIAT

Numero Uno x Baxter

Kappa Casein: Beta Casein: A22

<b>BPI</b>	<b>260/86%</b>	<b>ASI</b>	<b>54/93%</b>	<b>Mas Res</b>	<b>104/93%</b>	<b>Dtr Fert</b>	<b>106/86%</b>	<b>RRP \$36.00</b>
------------	----------------	------------	---------------	----------------	----------------	-----------------	----------------	--------------------

<b>Sire:</b>	Amighetti Numero Uno	<b>PTA Type</b>	<b>UDC</b>	<b>FLC</b>
<b>Dam:</b>	All.Nure Baxter Silky EX91	<b>1.49</b>	<b>1.81</b>	<b>0.61</b>

7742 dtrs 2206 herds 91% rel



Secretariat daughter

<b>TPI</b>	<b>2070</b>	<b>Net Merit \$</b>	<b>-15</b>
<b>Health</b>		<b>Production</b>	
PTA DPR	0.1	PTA Milk	-453
PL	1.3	PTA Fat	-17
SCE	2.6	% Fat	0
SCR		PTA Pro	-5
SCS	2.82	% Pro	0.03

12934 dtrs 3461 herds 94% rel

Stature	Short				0.96	Tall
Strength	Narrow				0.35	Wide
Body Depth	Shallow				0.56	Deep
Dairyness	Thick				0.70	Angular
Rump (side View)	High Pins				0.88	Sloped
Rump Width	Narrow				1.60	Wide
Rear Leg (Side View)	Posty				-0.14	Sickled
Rear Leg (Rear View)	Hock In				0.09	Straight
Foot Angle	Low Angle				0.65	Steep Angle
Foot & Leg Score	Low				0.97	High
Fore Udder	Loose				1.33	Strong
Rear Udder Height	Low				2.81	High
Rear Udder Width	Narrow				2.38	Wide
Suspensory Ligament	Weak				2.28	Strong
Udder Depth	Deep				1.42	Shallow
Teats (Front View)	Wide				0.10	Close
Teats (Rear View)	Wide				1.01	Close
Test Length	Short				1.38	Long

**ESTROTECT™**  
BREEDING INDICATOR



# BREEDING SUCCESS

**THE WORLD'S LEADING BREEDING MANAGEMENT INDICATOR NOW FEATURING THE BREEDING BULLSEYE!™**

The NEW ESTROTECT™ Breeding Indicator featuring patent pending Breeding Bullseye™ technology makes it easier than ever to identify cows that are in heat, pinpoint timing for AI and Timed AI protocols, as well as confirm successful pregnancies.

According to third-party research, when the new ESTROTECT™ Breeding Bullseye™ is rubbed off by mounting activity, cows are up to three times more likely to conceive. Not only does ESTROTECT™ with the Breeding Bullseye™ indicate when a cow is in heat, it tells you exactly when the animal should be bred to achieve optimal results.

To learn more about the new and improved ESTROTECT™ featuring the Breeding Bullseye™, visit [www.ESTROTECT.com](http://www.ESTROTECT.com)!



**AS GOOD AS A BULL™**

[www.ESTROTECT.com](http://www.ESTROTECT.com)

# Let us help you find your standout heifers.



## We are here to assist you with the many Genomic Services we have available including:

- Genomics on BPI, TPI, JPI & LPI bases
- Assistance on farm with sampling
- A2 Testing and Full Milk Protein Testing
- Choosing the correct export heifers
- Polled, JH1, BVD Testing
- Nominating key replacements

*One sample, one simple comprehensive solution.*



*Working with the local leading Australian genomic laboratory "Neogen Australasia" to support your breeding and export decisions.*



Discuss the range of testing options available with your local Genetics Australia Sales Representative or alternatively contact TLGV on the details below:



**Genetics Australia is excited to be partnering with MVE as the most trusted source of Semen Tanks available in Australia**



# TRUSTED BY THE BEST FOR 55+ YEARS



**MVE is trusted by the best and engineered for the best result.**

Protecting and preserving the best genetics for over 55 years through industry-leading service and precision engineering.

**CONTACT GENETICS AUSTRALIA FOR YOUR AI TANK NEEDS**



**Advanced Chemical Vacuum Retention System**

**Save money with Low Liquid Nitrogen Consumption**

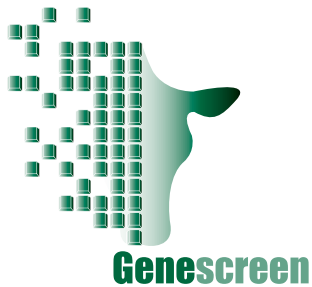
**Many tank sizes for different capacity and duration needs**

**Durability built for the farm**

Phone: (03) 5367 3888

[www.genaust.com.au](http://www.genaust.com.au)





# TRACKING YOUR HERDS GENETIC PERFORMANCE WITH GENESCREEN



Genescreen is your complete genetic analysis package. It provides you with individual cow mating suggestions based on either pedigree estimates or genomic breeding values. Track your herds performance through the Genescreen benchmarking module. Genescreen gives you the ability to analyse and understand where your breeding program is taking you. To order a FREE Genescreen, contact your local Genetics Australia representative or email [genescreen@genaust.com.au](mailto:genescreen@genaust.com.au)

**Genetics AUSTRALIA**  
Breeding better Australian herds

**Genetics Australia Co-Operative Limited**  
PO Box 195, BACCHUS MARSH, VIC 3340, AUSTRALIA  
P: +61 3 5367 3888  
[www.genaust.com.au](http://www.genaust.com.au)

**ORDERS & CUSTOMER SERVICE**  
T: 03 5367 3888  
E: [orders@genaust.com.au](mailto:orders@genaust.com.au)

**Anthony Shelly**  
CHIEF EXECUTIVE OFFICER  
M: 0408 529 410  
E: [ashelly@genaust.com.au](mailto:ashelly@genaust.com.au)

**John Gommers**  
BEEF SALES REPRESENTATIVE  
M: 0417 575 932  
E: [jgommers@genaust.com.au](mailto:jgommers@genaust.com.au)

**Ian Noakes**  
SALES REPRESENTATIVE  
Western Australia  
M: 0409 297 805  
E: [inoakes@genaust.com.au](mailto:inoakes@genaust.com.au)

**Greg Tiller**  
REGIONAL SALES MANAGER  
Northern Victoria, Riverina NSW  
& South Australia  
M: 0407 366 985  
E: [gtiller@genaust.com.au](mailto:gtiller@genaust.com.au)

**Gerard Collins**  
SALES REPRESENTATIVE  
Northern Victoria  
M: 0428 387 276  
E: [gcollins@genaust.com.au](mailto:gcollins@genaust.com.au)

**Ash Hogg**  
SALES REPRESENTATIVE  
Northern Victoria  
M: 0407 842 144  
E: [ahogg@genaust.com.au](mailto:ahogg@genaust.com.au)

**Rodney Brooks**  
REGIONAL SALES MANAGER  
Western Victoria, South East South  
Australia, South & North Coast NSW  
M: 0408 741 034  
E: [rbrooks@genaust.com.au](mailto:rbrooks@genaust.com.au)

**Graham Heaver**  
SALES REPRESENTATIVE  
Western Victoria, South Australia  
& Tasmania  
M: 0419 178 359  
E: [gheaver@genaust.com.au](mailto:gheaver@genaust.com.au)

**Coleman Baulch**  
SALES REPRESENTATIVE  
Western Victoria  
M: 0429 473 563  
E: [cbaulch@genaust.com.au](mailto:cbaulch@genaust.com.au)

**Katrina Galindo**  
REGIONAL SALES MANAGER  
Gippsland  
M: 0487 727 342  
E: [kgalindo@genaust.com.au](mailto:kgalindo@genaust.com.au)

**Gerard Brislin**  
SALES REPRESENTATIVE  
Gippsland  
REGIONAL SALES MANAGER  
Tasmania  
M: 0408 107 019  
E: [gbrislin@genaust.com.au](mailto:gbrislin@genaust.com.au)

**John Harle**  
SALES REPRESENTATIVE  
Queensland & NSW  
T: 07 3818 0564  
E: [jharle@genaust.com.au](mailto:jharle@genaust.com.au)

Phone: (03) 5367 3888

[www.genaust.com.au](http://www.genaust.com.au)

**Genetics AUSTRALIA**  
Breeding better Australian herds