

TOTAL

LIVESTOCK GENETICS

SUMMER UPDATE

DECEMBER 2024

TLGSHERIFF



EXQUISITE

Welcome to the Total Livestock Genetics Summer Bull Directory

We are proud to present our latest selection of exceptional TLG bulls, carefully bred for performance, reliability, and genetic excellence. This catalogue showcases a remarkable lineup, featuring **Twelve bulls with a TPI of over 2900 and five bulls with a BPI in excess of 500**, ensuring that you have access to the best international and local genetic potential available in the industry.

Among the standout additions to this collection are the highly anticipated Genex sires **Comet** and the **red and white polled bull Lex PP RC**, who when combined with outstanding bulls such as **Excitement** and **Casimiro**, bring a fresh look and innovation to our lineup. Whether you're looking to elevate your herd's overall performance or enhance specific traits, these bulls offer outstanding value.

We are also extremely happy to offer an extraordinary range of domestically bred bulls, headlined by young sires **Enzo**, **Magnet** and **Sheriff**. These bulls are a great example of the diverse range of local bulls available to farmers.

Additionally, we are excited to highlight our **Jersey bulls**, with the internationally acclaimed **Dingo** and the exceptional **Exquisite P** leading the way. These bulls are not only in demand in Australia but also highly sought after worldwide.

This catalogue offers a diverse and dynamic range of bulls, each selected to help you achieve success using superior genetics.

Whether you're a Farmer or distributor, we're confident that our bull lineup will meet and exceed your expectations. Let us help you make the next leap forward in herd improvement.

If you would like more details on any of the bulls in the catalogue or on any service or merchandise products, please contact your representative.



Genetics Australia - Breeding Better Australian Herds...
Anthony Shelly - CEO, Genetics Australia



Disclaimer:

The content of this Catalogue is provided for information only. It is published with care and attention to accuracy, nevertheless Genetics Australia Holdings Pty Ltd and all affiliates (GAH) accepts no liability if, for any reason the information is inaccurate or out of date whether negligent or otherwise.

Limitation of Liability:

GAH warrants that it has clear title to the products sold and that all semen processed in its laboratory is processed under rigid quality controls. Since GAH does not control conditions under which its products are used it does not give, and its agents and employees are forbidden to give, any warranty expressed or implied as to the conception rate or productiveness or the results which may be obtained by the use of any product sold or in connection with any techniques recommended. GAH makes no other warranty of any kind whatsoever expressed or implied which extends beyond the description of its products. Where so permitted the liability of GAH for breach of a condition or warranty implied by statute is limited at GAH's option to the replacement or repair of the goods or the supply of equivalent goods or the cost of replacing or repairing the goods or of acquiring equivalent goods. So far as the law permits GAH shall not be liable in any way whatsoever for any indirect or consequential loss or loss of profit.

Sexed (sorted) semen:

Artificial Insemination products (straws) that GAH offers for sale as sexed (sorted) semen using Sexing Technologies proprietary technology, shall only be used for single-use artificial insemination and not for in-vitro-fertilisation or embryo transfer.

Prices:

All prices listed within this publication are listed exclusive of Goods and Services Tax (GST), so GST will be added at the time of purchase.

Source data:

Data referencing Australian Breeding Values (ABVs') information unless otherwise stated is sourced from DataGene December 2024 breeding value release. Data referencing United States of America Breeding Values are provided through the Council on Dairy Cattle Breeding (CDCB) this information unless otherwise stated is sourced from CDCB December 2024 breeding value release.\

Genetic Codes and Haplotype Abbreviations:

For a full breakdown of the Genetic Codes and Haplotypes referenced in this directory please visit the website www.genaust.com.au

CONVENTIONAL PLUS20

PLUS20 - it's our commitment that the conventional semen carrying this logo contains over 20 Million sperm cells per straw and has over 20 years of development.

Ultraplus™

Available also in Sexed Ultraplus Semen

MRRIGHT

Vala Mr Right (Almamater / Bandares / Silver)

A2 STATUS: A2/A2 Genetic Codes: TE Haplotypes: HH1F,HH2F,HH3F,HH4F,HH5F,HH6F
NASIS: TLGMRRIGHT NAAB:187H005559 HB:AUS2143902 DOB: 27/03/2021

SEXED \$55.00

RRP \$24.00

Ultraplus

CONVENTIONAL PLUS20



Vala MrRight

PRODUCTION ABV (g) 12/24

Milk	-157	79% R
Fat	35 kg	0.61%
Protein	14 kg	0.34%
ASI	179	79% R

WORKABILITIES

Milking Speed	105
Temperament	101
Likability	104

BPI 480 68%R

HWI 494 63%R

SI 753 65%R

Conformation ABV(g)

Overall Type	108
Mammary	107
Rump	104
Dairy Strength	100
Feet and Legs	105

HEALTH ABV (g) 12/24

Cell Count	153	69
Survival	112	61
Feed Saved	-121	44
Dtr Fertility	114	66
Calving Ease	103	93
Gest Length	-5	96
Heat Tol	101	48

CONFORMATION ABV (g)	0 Dtrs	0 Herds	64%Rel	Dec 2024
OVERALL TYPE	108	MAMMARY SYSTEM	107	
Stature	101	Pin Width	102	
Bone Quality	97	Pin Set	104	
Angularity	94	Udder Texture	98	
Muzzle Width	102	Udder Depth	108	
Body Depth	99	Fore Attachment	106	
Chest Width	106	Rear Att Height	106	
Loin Strength	102	Rear Att Width	102	
Foot Angle	105	Centre Ligament	102	
Rear Set	101	Teat Placement (Front)	106	
Rear Leg Rear View	104	Teat Placement (Rear)	102	
		Teat Length	101	

- Continues to be in high demand with his balanced no holes proof
- 480 BPI 494 HWI A2/A2

SHERIFF

Vala Bolti Sheriff (Bolti / Almamater / King Royal)

A2 STATUS: A2/A2 Genetic Codes: TE Haplotypes: HH1F,HH2F,HH3F,HH4F,HH5F,HH6F
NASIS: TLGSHERIFF NAAB:187H005712 HB:AUS2227506 DOB: 12/03/2023

SEXED \$55.00

RRP \$22.00

Ultraplus

CONVENTIONAL PLUS20

NEW

USDA CDCB Genomic Index								Dec 2024
GTPI	MILK	FAT	%F	PROT	%P	Rel%	NM\$	
2673	230	39	0.12	28	0.08	78	587	

DPR	PL	C/EASE	GEST L	SCS	PTAT	UDC	F & L
1.5	4.6	1.9	0	2.69	1.65	2.25	0.03



Vala Bolti Sheriff

Australian Indices										Dec 2024
BPI	HWI	SI	ASI	Milk	Fat	Fat%	Prot	Prot%	Rel%	
535	571	859	156	-226	24	0.49%	13	0.36%	77	

Dtr Fert	LiveW	SCC	M/Speed	Temp	Likeability	
115	101	181	105	103	105	
C Ease	Gest L	Feed S	Survival	Heat Tol	TYPE	MAMM
103	0	-58	114	100	104	106

- #1 bull for longevity in Australia
- +2.25 UDC and +106 Mammary

CONFORMATION		0 Dtrs	0 Herds	USDA/HA Genomic Evaluation	Dec 2024
PTAT: 1.65	UDC: 2.25	FLC: 0.03			GTPI 2673
Stature	Short				Tall 1.33
Strength	Frail				Strong 0.38
Body Depth	Shallow				Deep -0.02
Dairy Form	Tight Rib				Open Rib 0.25
Rump Angle	High				Sloped 2.04
Rump width	Narrow				Wide 0.93
RL SV	Posty				Sickle -0.79
RL RV	Hock-In				Straight 0.00
Foot Angle	Low				Steep 1.22
F & L Score	Low				High 0.35
Fore Attachment	Loose				Strong 2.67
Rear Udder Height	Low				High 2.50
Rear Udder Width	Narrow				Wide 2.17
Udder Cleft	Weak				Strong 1.68
Udder Depth	Deep				Shallow 2.92
Fore Teat Placement	Wide				Close 1.63
Rear Teat Placement	Wide				Close 1.50
Teat Length	Short				Long -0.61

MAGNET

Bundalong Perfect Magnet (Perfect / Magnitude / Muscadet)

A2 STATUS: A2/A2 Genetic Codes: TE Haplotypes: HH1F,HH2F,HH3F,HH4F,HH5F,HH6F
 NASIS: TLGMAGNET NAAB: 187H005716 HB: AUS2234385 DOB: 02/03/2023

SEXED \$55.00

RRP \$24.00



USDA CDCB Genomic Index Dec 2024

GTPI	MILK	FAT	%F	PROT	%P	Rel%	NM\$
2927	1424	88	0.12	61	0.06	80	859

DPR	PL	C/EASE	GEST L	SCS	PTAT	UDC	F & L
-0.6	4.1	2	-1.8	2.73	1.19	1.3	0.51



Bundalong Perfect Magnet

Australian Indices Dec 2024

BPI	HWI	SI	ASI	Milk	Fat	Fat%	Prot	Prot%	Rel%
449	433	848	221	492	40	0.27%	26	0.25%	78

Dtr Fert	LiveW	SCC	M/Speed	Temp	Likeability
111	102	155	101	101	104

C Ease	Gest L	Feed S	Survival	Heat Tol	TYPE	MAMM
102	-3	-102	110	91	99	102

- Perfect son with balanced proof
- Wide sloped rumps and adds teat length

CONFORMATION 0 Dtrs 0 Herds USDA/HA Genomic Evaluation Dec 2024

PTAT: 1.19 UDC: 1.30 FLC: 0.51 GTPI 2927

Characteristic	Value	Target	Score
Stature	Short	Tall	0.50
Strength	Frail	Strong	0.57
Body Depth	Shallow	Deep	0.21
Dairy Form	Tight Rib	Open Rib	0.38
Rump Angle	High	Sloped	0.00
Rump width	Narrow	Wide	1.74
RL SV	Posty	Sickle	-0.27
RL RV	Hock-In	Straight	1.18
Foot Angle	Low	Steep	0.67
F & L Score	Low	High	0.40
Fore Attachment	Loose	Strong	1.37
Rear Udder Height	Low	High	1.97
Rear Udder Width	Narrow	Wide	1.91
Udder Cleft	Weak	Strong	0.62
Udder Depth	Deep	Shallow	0.58
Fore Teat Placement	Wide	Close	0.20
Rear Teat Placement	Wide	Close	0.64
Teat Length	Short	Long	0.40

-1.5 -1.0 -0.5 0 0.5 1.0 1.5

RIZBOY

Emu Banks Rizboy (Manhattan / Montana / Supershot)

A2 STATUS: A1/A2 Genetic Codes: MW Haplotypes: HH1F,HH2F,HH3F,HH4F,HH5F,HH6F
 NASIS: TLGRIZBOY NAAB: 187H05641 HB: AUS2181357 DOB: 30/11/2021

SEXED \$52.00

RRP \$22.00



USDA CDCB Genomic Index Dec 2024

GTPI	MILK	FAT	%F	PROT	%P	Rel%	NM\$
2854	442	76	0.23	47	0.13	82	704

DPR	PL	C/EASE	GEST L	SCS	PTAT	UDC	F & L
1.5	4	2.5	-1.3	2.72	1.75	1.57	-0.01



Dam: Westcoast Montana Riza 4700

Australian Indices Dec 2024

BPI	HWI	SI	ASI	Milk	Fat	Fat%	Prot	Prot%	Rel%
515	560	774	153	-327	31	0.65%	9	0.34%	76

Dtr Fert	LiveW	SCC	M/Speed	Temp	Likeability
117	102	176	103	103	105

C Ease	Gest L	Feed S	Survival	Heat Tol	TYPE	MAMM
102	-3	-87	113	96	108	104

- Combing high TPI and BPI with Australian standing
- +2854 TPI +515 BPI +1.75 PTAT +1.5 DPR

CONFORMATION 0 Dtrs 0 Herds USDA/HA Genomic Evaluation Dec 2024

PTAT: 1.75 UDC: 1.57 FLC: -0.01 GTPI 2854

Characteristic	Value	Target	Score
Stature	Short	Tall	1.94
Strength	Frail	Strong	1.20
Body Depth	Shallow	Deep	0.85
Dairy Form	Tight Rib	Open Rib	0.54
Rump Angle	High	Sloped	1.01
Rump width	Narrow	Wide	1.79
RL SV	Posty	Sickle	-0.61
RL RV	Hock-In	Straight	-0.02
Foot Angle	Low	Steep	1.04
F & L Score	Low	High	0.49
Fore Attachment	Loose	Strong	2.62
Rear Udder Height	Low	High	1.94
Rear Udder Width	Narrow	Wide	2.04
Udder Cleft	Weak	Strong	0.33
Udder Depth	Deep	Shallow	2.39
Fore Teat Placement	Wide	Close	0.07
Rear Teat Placement	Wide	Close	-0.25
Teat Length	Short	Long	0.14

-1.5 -1.0 -0.5 0 0.5 1.0 1.5

ENZO

Summit View Dropbox Enzo - ET (Dropbox / Einstein / Marius)

NEW

A2 STATUS: A1/A2 Genetic Codes: TE Haplotypes: HH1F,HH2F,HH3F,HH4F,HH5F,HH6F
 NASIS: TLGENZO NAAB: 187HO5738 HB: AUS2238370 DOB: 25/06/2023

SEXED \$58.00

RRP \$25.00

UltraPlus

CONVENTIONAL PLUS28

USDA CDCB Genomic Index							Dec 2024
GTPI	MILK	FAT	%F	PROT	%P	Rel%	NM\$
2988	1228	88	0.15	71	0.12	79	844
DPR	PL	C/EASE	GEST L	SCS	PTAT	UDC	F & L
-0.7	3.9	2.3	-1.1	2.59	1.91	2.08	-0.17

CONFORMATION				0 Dtrs	0 Herds	USDA/HA Genomic Evaluation		Dec 2024
PTAT: 1.91 UDC: 2.08 FLC: -0.17				GTPI 2988				
Stature	Short					Tall	2.57	
Strength	Frail					Strong	1.49	
Body Depth	Shallow					Deep	1.46	
Dairy Form	Tight Rib					Open Rib	1.50	
Rump Angle	High					Sloped	1.34	
Rump width	Narrow					Wide	2.01	
RL SV	Posty					Sickle	-0.54	
RL RV	Hock-In					Straight	-0.32	
Foot Angle	Low					Steep	1.24	
F & L Score	Low					High	0.54	
Fore Attachment	Loose					Strong	2.47	
Rear Udder Height	Low					High	2.91	
Rear Udder Width	Narrow					Wide	3.28	
Udder Cleft	Weak					Strong	1.58	
Udder Depth	Deep					Shallow	1.99	
Fore Teat Placement	Wide					Close	1.42	
Rear Teat Placement	Wide					Close	1.56	
Teat Length	Short					Long	0.04	

- BPI 558 SI 903 GTPI 2988
- Extreme UDC sire +2.08
- High milk flow 1228 lbs
- Dropbox son from high ranking female



Same family as Silverridge Duke Elsa



Summit View Enzo

BPI 558 64%R

HWI 589 58%R

SI 903 61%R

PRODUCTION ABV (g) 12/24		
Milk	11	76% R
Fat	39 kg	0.55%
Protein	21 kg	0.38%
ASI	219	76% R

WORKABILITIES	
Milking Speed	100
Temperament	103
Likability	104

Conformation ABV(g)	
Overall Type	100
Mammary	103
Rump	100
Dairy Strength	97
Feet and Legs	99

HEALTH ABV (g) 12/24		
Cell Count	192	66
Survival	110	54
Feed Saved	-113	41
Dtr Fertility	118	54
Calving Ease	103	69
Gest Length	-4	60
Heat Tol	95	48

CONFORMATION ABV (g) 0 Dtrs 0 Herds 60%Rel Dec 2024			
OVERALL TYPE	100	MAMMARY SYSTEM	103
Stature	107	Pin Width	102
Bone Quality	101	Pin Set	100
Angularity	95	Udder Texture	102
Muzzle Width	99	Udder Depth	104
Body Depth	95	Fore Attachment	103
Chest Width	98	Rear Att Height	103
Loin Strength	101	Rear Att Width	98
Foot Angle	102	Centre Ligament	102
Rear Set	100	Teat Placement (Front)	105
Rear Leg Rear View	96	Teat Placement (Rear)	104
		Teat Length	97

In Vitro Fertilization Services

Have you considered TLG's IVF services recently?

An alternative to the traditional methods of embryo transfer, IVF through TLG offers the following:

- On site TLG owned laboratory
- On centre facilities for oocyte pickup
- Servicing South West Victoria on farm
- One animal, or more, we have you covered
- Recipient herd available (subject to availability)
- Talk to us today about your next breeding program



At Elmar Holsteins its wonderful to see the first calves of our IVF journey. Happy health calves jumping around in the shed thriving.

The IVF services at TLG has allowed us to breed from our elite females. We made this decision to move forward with IVF after traditional methods were exhausted with embryo transfer.

Our donors are well cared for at TLG and we have managed all recipients on our farm. Coordinating the logistics has been streamlined with great communication from oocyte collection through to implanting embryos.

We see a real future in using the TLG IVF services in our business." **Steve and Deanne Hore, Elmar Holsteins.**

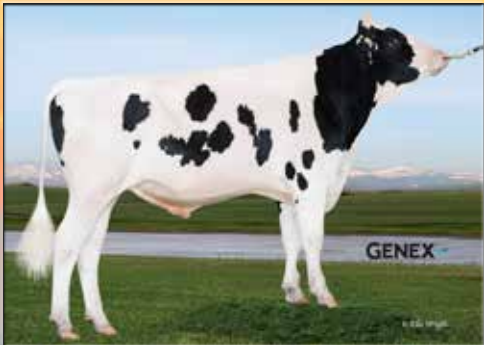
GENEX™

SUMMER SPECIALS

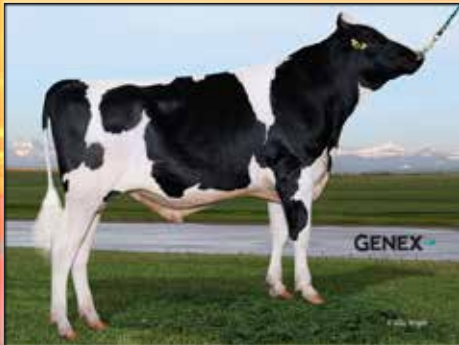
20% OFF RRP ON ALL

Genex Sires

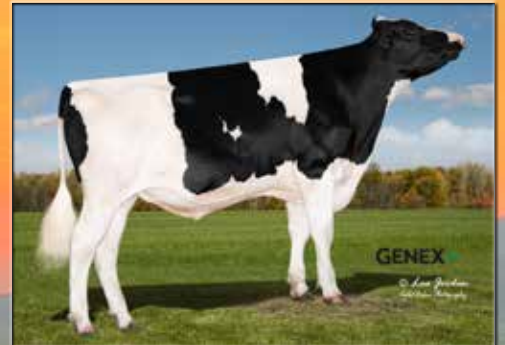
Offer ends 31st January 2025
while stocks last.



PEAK BACKSPIN



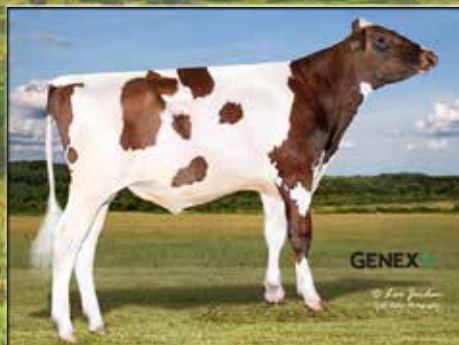
PEAK COMET



PEAK EXCITEMENT



PEAK MAUNO



SIEMERS LEX PP RED



PEAK CASIMIRO

COMET

Peak Comet (Maverick / Wheelhouse / Lionel)

GENEX



A2 STATUS: A1A2 Genetic Codes: TE Haplotypes: HH1F,HH2F,HH3F,HH4F,HH5F,HH6F
 NASIS: GXCOMET NAAB: 001H016959 HB: H0840M003263337326 DOB: 06/03/2023

SEXED \$55.00
Ultraplus

RRP \$24.00

USDA CDCB Genomic Index							Dec 2024
GTPI	MILK	FAT	%F	PROT	%P	Rel%	NM\$
3144	1491	115	0.21	63	0.06	79	1083
DPR	PL	C/EASE	GEST L	SCS	PTAT	UDC	F & L
-0.5	4.8	2.3	-0.5	2.83	2.01	2.22	0.46



Peak Comet

Australian Indices										Dec 2024
BPI	HWI	SI	ASI	Milk	Fat	Fat%	Prot	Prot%	Rel%	
373	334	608	187	21	44	0.63%	14	0.26%	76	
Dtr Fert	LiveW	SCC	M/Speed	Temp	Likeability					
106	100	157	103	102	104					
C Ease	Gest L	Feed S	Survival	Heat Tol	TYPE	MAMM				
103	-4	-116	108	97	102	107				

○ New release High Type and TPI sire

○ +3144 GTPI +2.22 UDC +1491 Milk

CONFORMATION		0 Dtrs	0 Herds	USDA/HA Genomic Evaluation	Dec 2024
PTAT: 2.01	UDC: 2.22	FLC: 0.46			GTPI 3144
Stature	Short			Tall	1.11
Strength	Frail			Strong	0.42
Body Depth	Shallow			Deep	0.44
Dairy Form	Tight Rib			Open Rib	1.69
Rump Angle	High			Sloped	0.46
Rump width	Narrow			Wide	1.67
RL SV	Posty			Sickle	0.64
RL RV	Hock-In			Straight	0.59
Foot Angle	Low			Steep	0.40
F & L Score	Low			High	0.71
Fore Attachment	Loose			Strong	2.23
Rear Udder Height	Low			High	2.91
Rear Udder Width	Narrow			Wide	3.28
Udder Cleft	Weak			Strong	0.69
Udder Depth	Deep			Shallow	1.74
Fore Teat Placement	Wide			Close	1.07
Rear Teat Placement	Wide			Close	1.12
Teat Length	Short			Long	-0.11

LEX-pp

Siemers Lex PP Red (Lazer / McDonald / Luster P)

GENEX

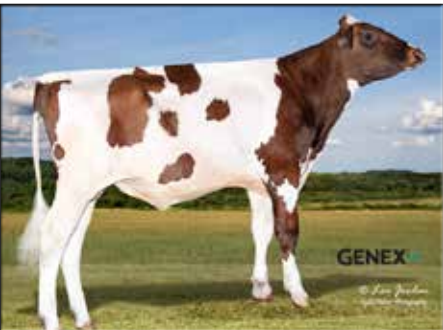


A2 STATUS: A2A2 Genetic Codes: TE Haplotypes: HH1F,HH2F,HH3F,HH4F,HH5F,HH6F
 NASIS: GXLEX NAAB: 011H017352 HB: H0840M003267429178 DOB: 09/08/2023

SEXED \$60.00

RRP \$26.00

USDA CDCB Genomic Index							Dec 2024
GTPI	MILK	FAT	%F	PROT	%P	Rel%	NM\$
2663	505	65	0.18	25	0.03	80	549
DPR	PL	C/EASE	GEST L	SCS	PTAT	UDC	F & L
-1	2.8	2.4	-0.9	2.85	2.7	2.18	1.41



Siemers Lex PP RED

Australian Indices										Dec 2024
BPI	HWI	SI	ASI	Milk	Fat	Fat%	Prot	Prot%	Rel%	
272	266	357	80	118	32	0.39%	3	0.00%	77	
Dtr Fert	LiveW	SCC	M/Speed	Temp	Likeability					
107	104	150	103	102	104					
C Ease	Gest L	Feed S	Survival	Heat Tol	TYPE	MAMM				
102	-4	-165	108	102	104	107				

○ New release PP Red sire

○ Delivering so much in one package

CONFORMATION		0 Dtrs	0 Herds	USDA/HA Genomic Evaluation	Dec 2024
PTAT: 2.70	UDC: 2.18	FLC: 1.41			GTPI 2663
Stature	Short			Tall	2.80
Strength	Frail			Strong	0.19
Body Depth	Shallow			Deep	0.97
Dairy Form	Tight Rib			Open Rib	2.48
Rump Angle	High			Sloped	-0.75
Rump width	Narrow			Wide	1.91
RL SV	Posty			Sickle	0.63
RL RV	Hock-In			Straight	1.83
Foot Angle	Low			Steep	2.34
F & L Score	Low			High	1.89
Fore Attachment	Loose			Strong	3.17
Rear Udder Height	Low			High	2.92
Rear Udder Width	Narrow			Wide	2.22
Udder Cleft	Weak			Strong	1.64
Udder Depth	Deep			Shallow	2.90
Fore Teat Placement	Wide			Close	2.12
Rear Teat Placement	Wide			Close	2.09
Teat Length	Short			Long	-0.02

EXCITEMENT

Peak Excitement (Exquisite / Pursuit / Emerald)



A2 STATUS: A1/A2 Genetic Codes: TE Haplotypes: HH1F,HH2F,HH3F,HH4F,HH5F,HH6F
 NASIS: GXEXCITEMENT NAAB: 001H016675 HB: H0840M003252198074 DOB: 20/10/2022

SEXED \$60.00 RRP \$30.00
Ultraplus

USDA CDCB Genomic Index Dec 2024

GTPI	MILK	FAT	%F	PROT	%P	Rel%	NM\$
3235	911	115	0.3	72	0.16	79	1217

DPR	PL	C/EASE	GEST L	SCS	PTAT	UDC	F & L
0	6.8	1.7	-1.3	2.69	1.63	1.02	1.24



Peak Excitement

Australian Indices Dec 2024

BPI	HWI	SI	ASI	Milk	Fat	Fat%	Prot	Prot%	Rel%
474	403	817	265	-131	50	0.80%	22	0.49%	77

Dtr Fert	LiveW	SCC	M/Speed	Temp	Likeability	
106	102	180	102	103	104	
C Ease	Gest L	Feed S	Survival	Heat Tol	TYPE	MAMM
102	-5	-118	109	91	104	104

○ Sire of sons with high usage in 2024

○ 3235 GTPI +2.4 DPR +1.63 PTAT and much more

CONFORMATION 0 Dtrs 0 Herds USDA/HA Genomic Evaluation Dec 2024

PTAT: 1.63 UDC: 1.02 FLC: 1.24 GTPI 3235

Characteristic	Value	Target	Score
Stature	Short	Tall	1.08
Strength	Frail	Strong	0.45
Body Depth	Shallow	Deep	0.30
Dairy Form	Tight Rib	Open Rib	1.12
Rump Angle	High	Sloped	0.22
Rump width	Narrow	Wide	1.09
RL SV	Posty	Sickle	-0.29
RL RV	Hock-In	Straight	1.51
Foot Angle	Low	Steep	1.43
F & L Score	Low	High	1.34
Fore Attachment	Loose	Strong	1.50
Rear Udder Height	Low	High	1.57
Rear Udder Width	Narrow	Wide	2.15
Udder Cleft	Weak	Strong	-0.74
Udder Depth	Deep	Shallow	0.75
Fore Teat Placement	Wide	Close	0.34
Rear Teat Placement	Wide	Close	-0.18
Teat Length	Short	Long	0.17

CASIMIRO

Peak Casimiro (AltaOvertake/ AltaZazzle / Renegade)



A2 STATUS: A2/A2 Genetic Codes: MW Haplotypes: HH1F,HH2F,HH3F,HH4F,HH5F,HH6F
 NASIS: GXCASIMIRO NAAB: 001H016650 HB: USA3250025924 DOB: 22/09/2022

SEXED \$55.00 RRP \$24.00
Ultraplus

USDA CDCB Genomic Index Dec 2024

GTPI	MILK	FAT	%F	PROT	%P	Rel%	NM\$
3243	965	96	0.22	67	0.14	80	1126

DPR	PL	C/EASE	GEST L	SCS	PTAT	UDC	F & L
2.4	6.7	2	0	2.65	1.67	2.1	0.99



Peak Casimiro

Australian Indices Dec 2024

BPI	HWI	SI	ASI	Milk	Fat	Fat%	Prot	Prot%	Rel%
484	491	842	221	160	43	0.52%	22	0.33%	77

Dtr Fert	LiveW	SCC	M/Speed	Temp	Likeability	
115	98	165	101	99	102	
C Ease	Gest L	Feed S	Survival	Heat Tol	TYPE	MAMM
104	-1	-106	110	98	97	98

○ NEW release sire with extreme TPI +3243

○ +2.4 DPR +965 Milk +2.10 UDC and so much more

CONFORMATION 0 Dtrs 0 Herds USDA/HA Genomic Evaluation Dec 2024

PTAT: 1.67 UDC: 2.10 FLC: 0.99 GTPI 3243

Characteristic	Value	Target	Score
Stature	Short	Tall	0.77
Strength	Frail	Strong	-0.11
Body Depth	Shallow	Deep	-0.58
Dairy Form	Tight Rib	Open Rib	0.28
Rump Angle	High	Sloped	0.09
Rump width	Narrow	Wide	0.88
RL SV	Posty	Sickle	-1.05
RL RV	Hock-In	Straight	1.11
Foot Angle	Low	Steep	1.50
F & L Score	Low	High	1.08
Fore Attachment	Loose	Strong	2.61
Rear Udder Height	Low	High	2.50
Rear Udder Width	Narrow	Wide	2.14
Udder Cleft	Weak	Strong	0.60
Udder Depth	Deep	Shallow	2.41
Fore Teat Placement	Wide	Close	0.65
Rear Teat Placement	Wide	Close	0.46
Teat Length	Short	Long	0.22

BACKSPIN

Peak Backspin (AltaExquisite / No Excuse / Redrock)



A2 STATUS: A2/A2 Genetic Codes: TE Haplotypes: HH1F,HH2F,HH3F,HH4F,HH5F,HH6F
 HB: H0840M003252198074 NASIS: GXBACKSPIN NAAB: 001H016812 DOB: 01/11/2022

SEXED \$55.00 RRP \$22.00

USDA CDCB Genomic Index							Dec 2024
GTPI	MILK	FAT	%F	PROT	%P	Rel%	NM\$
3117	1180	97	0.19	69	0.12	79	1120
DPR	PL	C/EASE	GEST L	SCS	PTAT	UDC	F & L
0	5.8	2.1	-1.4	2.72	1.53	1.78	-0.16



Peak Backspin

Australian Indices										Dec 2024
BPI	HWI	SI	ASI	Milk	Fat	Fat%	Prot	Prot%	Rel%	
416	389	712	197	-6	42	0.61%	16	0.31%	76	
Dtr Fert	LiveW	SCC	M/Speed	Temp	Likeability					
107	98	169	102	101	103					
C Ease	Gest L	Feed S	Survival	Heat Tol	TYPE	MAMM				
101	-6	-43	108	99	100	102				

- Daughter Fertility, sloped wide rumps
- +3117 TPI, +1180 Milk, positive components

CONFORMATION				0 Dtrs	0 Herds	USDA/HA Genomic Evaluation	Dec 2024
PTAT: 1.53	UDC: 1.78	FLC: -0.16					GTPI 3117
Stature	Short					Tall	1.86
Strength	Frail					Strong	0.06
Body Depth	Shallow					Deep	0.23
Dairy Form	Tight Rib					Open Rib	1.78
Rump Angle	High					Sloped	1.61
Rump width	Narrow					Wide	1.39
RL SV	Posty					Sickle	0.04
RL RV	Hock-In					Straight	-0.19
Foot Angle	Low					Steep	0.67
F & L Score	Low					High	0.34
Fore Attachment	Loose					Strong	2.23
Rear Udder Height	Low					High	2.92
Rear Udder Width	Narrow					Wide	2.60
Udder Cleft	Weak					Strong	0.03
Udder Depth	Deep					Shallow	1.74
Fore Teat Placement	Wide					Close	0.49
Rear Teat Placement	Wide					Close	0.29
Teat Length	Short					Long	-0.04

LUCKYCHARM

Peak Luckycharm (Marlon x Magnifique x AltaZazzle)



A2 STATUS: A2/A2 Genetic Codes: TE Haplotypes: HH1F,HH2F,HH3F,HH4F,HH5F,HH6F
 HB: H0840M003269404436 NASIS: GXLUCKYCHARM NAAB: 001H016863 DOB: 13/03/2023

SEXED \$52.00 RRP \$22.00

USDA CDCB Genomic Index							Dec 2024
GTPI	MILK	FAT	%F	PROT	%P	Rel%	NM\$
3200	1476	113	0.21	72	0.09	79	1101
DPR	PL	C/EASE	GEST L	SCS	PTAT	UDC	F & L
0.4	5.7	1.8	-1.8	2.7	1.78	2.01	0.59



Traces back to the famous Lylehaven Lila Z

Australian Indices										Dec 2024
BPI	HWI	SI	ASI	Milk	Fat	Fat%	Prot	Prot%	Rel%	
433	415	789	221	217	47	0.55%	21	0.28%	76	
Dtr Fert	LiveW	SCC	M/Speed	Temp	Likeability					
110	98	168	99	99	101					
C Ease	Gest L	Feed S	Survival	Heat Tol	TYPE	MAMM				
104	-6	-56	109	94	101	98				

- Extreme TPI sire +3200 GTPI with balanced linear
- Milk, DPR and udders in one

CONFORMATION				0 Dtrs	0 Herds	USDA/HA Genomic Evaluation	Dec 2024
PTAT: 1.78	UDC: 2.01	FLC: 0.59					GTPI 3200
Stature	Short					Tall	1.31
Strength	Frail					Strong	0.55
Body Depth	Shallow					Deep	0.34
Dairy Form	Tight Rib					Open Rib	0.83
Rump Angle	High					Sloped	1.72
Rump width	Narrow					Wide	1.11
RL SV	Posty					Sickle	-0.51
RL RV	Hock-In					Straight	0.73
Foot Angle	Low					Steep	1.35
F & L Score	Low					High	0.82
Fore Attachment	Loose					Strong	2.60
Rear Udder Height	Low					High	2.56
Rear Udder Width	Narrow					Wide	2.55
Udder Cleft	Weak					Strong	0.62
Udder Depth	Deep					Shallow	1.93
Fore Teat Placement	Wide					Close	1.34
Rear Teat Placement	Wide					Close	1.21
Teat Length	Short					Long	-0.59

POCALYPSE

Peak Bullpocalypse (AltaGadzook x No Excuse x Redrock)

A2 STATUS: A2/A2 Genetic Codes: TE Haplotypes: HH1F,HH2F,HH3F,HH4F,HH5F,HH6F
 NASIS: GXPOCALYPSE NAAB: 001H016649 HB: H084000003247843699 DOB: 24/05/2022

GENEX

SEXED \$52.00 RRP \$20.00
Ultraplus

USDA CDCB Genomic Index							Dec 2024
GTPI	MILK	FAT	%F	PROT	%P	Rel%	NM\$
3083	1398	102	0.18	70	0.1	80	1016

DPR	PL	C/EASE	GEST L	SCS	PTAT	UDC	F & L
-0.7	4.7	2.2	-1.9	2.71	1.63	1.85	-0.51

- High ranking TPI sire +3083 GTPI
- Combining Milk, Udders & Fertility A2A2



Same family as Ammon-Peachy Shauna

Australian Indices										Dec 2024
BPI	HWI	SI	ASI	Milk	Fat	Fat%	Prot	Prot%	Rel%	
514	468	922	242	247	57	0.67%	21	0.28%	76	

Dtr Fert	LiveW	SCC	M/Speed	Temp	Likeability
108	99	186	101	101	104

C Ease	Gest L	Feed S	Survival	Heat Tol	TYPE	MAMM
102	-7	-71	112	97	96	99

CONFORMATION		0 Dtrs	0 Herds	USDA/HA Genomic Evaluation	Dec 2024
PTAT: 1.63	UDC: 1.85	FLC: -0.51			GTPI 3083
Stature	Short			Tall	1.81
Strength	Frail			Strong	0.42
Body Depth	Shallow			Deep	0.51
Dairy Form	Tight Rib			Open Rib	1.54
Rump Angle	High			Sloped	0.64
Rump width	Narrow			Wide	1.59
RL SV	Posty			Sickle	0.26
RL RV	Hock-In			Straight	-0.51
Foot Angle	Low			Steep	0.61
F & L Score	Low			High	-0.02
Fore Attachment	Loose			Strong	2.54
Rear Udder Height	Low			High	2.40
Rear Udder Width	Narrow			Wide	2.39
Udder Cleft	Weak			Strong	0.85
Udder Depth	Deep			Shallow	2.01
Fore Teat Placement	Wide			Close	0.79
Rear Teat Placement	Wide			Close	0.87
Teat Length	Short			Long	0.04

MAUNO

Peak Mauno (Zemini / Pursuit / Medley)

A2 STATUS: A2/A2 Genetic Codes: TE Haplotypes: HH1F,HH2F,HH3F,HH4F,HH5F,HH6F
 NASIS: GXMAUNO NAAB: 001H016397 HB: H0840M003247843563 DOB: 24/04/2022

GENEX

RRP \$23.00

USDA CDCB Genomic Index							Dec 2024
GTPI	MILK	FAT	%F	PROT	%P	Rel%	NM\$
3132	1883	101	0.11	70	0.04	81	1150

DPR	PL	C/EASE	GEST L	SCS	PTAT	UDC	F & L
-0.6	6.5	1.6	-2.9	2.63	1.3	1.5	0.72

- High TPI sire +3132 GTPI & 1.6% Calving Ease
- +1.30 PTAT +1.50 UDC A2/A2



Peak Mauno

Australian Indices										Dec 2024
BPI	HWI	SI	ASI	Milk	Fat	Fat%	Prot	Prot%	Rel%	
385	340	723	179	545	40	0.24%	21	0.12%	77	

Dtr Fert	LiveW	SCC	M/Speed	Temp	Likeability
105	99	173	101	100	104

C Ease	Gest L	Feed S	Survival	Heat Tol	TYPE	MAMM
104	-6	-99	109	100	103	102

CONFORMATION		0 Dtrs	0 Herds	USDA/HA Genomic Evaluation	Dec 2024
PTAT: 1.30	UDC: 1.50	FLC: 0.72			GTPI 3132
Stature	Short			Tall	0.71
Strength	Frail			Strong	0.13
Body Depth	Shallow			Deep	-0.29
Dairy Form	Tight Rib			Open Rib	0.65
Rump Angle	High			Sloped	0.57
Rump width	Narrow			Wide	0.98
RL SV	Posty			Sickle	-0.74
RL RV	Hock-In			Straight	0.84
Foot Angle	Low			Steep	0.91
F & L Score	Low			High	0.82
Fore Attachment	Loose			Strong	1.77
Rear Udder Height	Low			High	1.75
Rear Udder Width	Narrow			Wide	2.16
Udder Cleft	Weak			Strong	0.18
Udder Depth	Deep			Shallow	1.24
Fore Teat Placement	Wide			Close	1.05
Rear Teat Placement	Wide			Close	0.82
Teat Length	Short			Long	-0.07

ZIMMER Peak Zimmer (Jalapeno / Incredible / Pursuit)

A2 STATUS: A2/A2 Genetic Codes: TE Haplotypes: HH1F,HH2F,HH3F,HH4F,HH5F,HH6F
 NASIS: GXZIMMER NAAB: 001H016646 HB: H0840M003247843570 DOB: 25/04/2022

GENEX

SEXED \$50.00 RRP \$20.00
Ultraplus

USDA CDCB Genomic Index Dec 2024

GTPI	MILK	FAT	%F	PROT	%P	Rel%	NMS
3005	1851	82	0.04	76	0.06	81	1101

DPR	PL	C/EASE	GEST L	SCS	PTAT	UDC	F & L
-1.8	5.5	1.6	-1.6	2.68	1.49	1.51	-0.33



Peak Zimmer

Australian Indices Dec 2024

BPI	HWI	SI	ASI	Milk	Fat	Fat%	Prot	Prot%	Rel%
386	371	720	159	302	32	0.28%	17	0.17%	77

Dtr Fert	LiveW	SCC	M/Speed	Temp	Likeability	
106	99	167	102	103	105	
C Ease	Gest L	Feed S	Survival	Heat Tol	TYPE	MAMM
104	-3	-38	110	104	102	103

- Outcross pedigree with nice linear profile
- +1851 Milk, +157 fat & protein, +3005 TPI

CONFORMATION 0 Dtrs 0 Herds USDA/HA Genomic Evaluation Dec 2024
PTAT: 1.49 UDC: 1.51 FLC: -0.33 **GTPI 3005**

Stature	Short				Tall	1.25
Strength	Frail				Strong	-0.13
Body Depth	Shallow				Deep	0.64
Dairy Form	Tight Rib				Open Rib	3.35
Rump Angle	High				Sloped	1.59
Rump width	Narrow				Wide	1.79
RL SV	Posty				Sickle	0.89
RL RV	Hock-In				Straight	-0.50
Foot Angle	Low				Steep	0.20
F & L Score	Low				High	0.10
Fore Attachment	Loose				Strong	1.25
Rear Udder Height	Low				High	2.29
Rear Udder Width	Narrow				Wide	3.21
Udder Cleft	Weak				Strong	1.01
Udder Depth	Deep				Shallow	0.36
Fore Teat Placement	Wide				Close	0.92
Rear Teat Placement	Wide				Close	1.05
Teat Length	Short				Long	0.36

GENOMIC TESTING

Talk to us today for all your GENOMIC TESTING requirements.

All major testing services available including:

- BPI, TPI, JPI & LPI Bases
- A2 & Full Milk Proteins Testing
- Polled, JH1, BVD Testing

Backed with assistance for sampling on farm
 We work with the Australian genomic laboratory "Neogen"

One sample, one simple comprehensive solution.



LIONIZE-pp

Summit View Nipit Lionize - PP (Nipit-P / Luster-P / Bight-P)

A2 STATUS: A2/A2 Genetic Codes: TE, PP Haplotypes: HH1F,HH2F,HH3F,HH4F,HH5F,HH6F
 NASIS: TLGLIONIZE NAAB: 187H005667 HB: AUS 2199626 DOB: 30/05/2022

SEXED \$55.00 RRP \$24.00
 

USDA CDCB Genomic Index							Dec 2024
GTPI	MILK	FAT	%F	PROT	%P	Rel%	NM\$
2712	621	83	0.23	54	0.13	82	528

DPR	PL	C/EASE	GEST L	SCS	PTAT	UDC	F & L
-0.8	0.1	2.8	0.4	3.07	2.15	1.56	0.32



Summit View Nipit Lionize-PP

Australian Indices										Dec 2024
BPI	HWI	SI	ASI	Milk	Fat	Fat%	Prot	Prot%	Rel%	
337	260	610	216	166	40	0.47%	22	0.33%	78	

Dtr Fert	LiveW	SCC	M/Speed	Temp	Likeability
105	103	144	101	101	103

C Ease	Gest L	Feed S	Survival	Heat Tol	TYPE	MAMM
101	-2	-163	107	96	103	101

- High ranking PP sire with +2.15 for Type
- Combining Polled, Milk, Type & Udders

CONFORMATION		0 Dtrs	0 Herds	USDA/HA Genomic Evaluation		Dec 2024	
PTAT: 2.15	UDC: 1.56	FLC: 0.32			GTPI 2712		
Stature	Short				Tall	2.75	
Strength	Frail				Strong	1.39	
Body Depth	Shallow				Deep	1.74	
Dairy Form	Tight Rib				Open Rib	2.12	
Rump Angle	High				Sloped	0.65	
Rump width	Narrow				Wide	1.87	
RL SV	Posty				Sickle	0.96	
RL RV	Hock-In				Straight	0.79	
Foot Angle	Low				Steep	0.78	
F & L Score	Low				High	0.94	
Fore Attachment	Loose				Strong	2.19	
Rear Udder Height	Low				High	2.16	
Rear Udder Width	Narrow				Wide	2.29	
Udder Cleft	Weak				Strong	1.61	
Udder Depth	Deep				Shallow	2.16	
Fore Teat Placement	Wide				Close	0.86	
Rear Teat Placement	Wide				Close	1.14	
Teat Length	Short				Long	0.52	

MDOUGLAS-pp

Vala Fomo Douglas - PP (Fomo / Bight / Montana)

A2 STATUS: A2/A2 Genetic Codes: TE, PP Haplotypes: HH1F,HH2F,HH3F,HH4F,HH5F,HH6F
 NASIS: TLGMDOUGLAS NAAB: 187H005637 HB: AUS2191761 DOB: 04/02/2022

SEXED \$55.00 RRP \$22.00
 

USDA CDCB Genomic Index							Dec 2024
GTPI	MILK	FAT	%F	PROT	%P	Rel%	NM\$
2855	488	87	0.26	42	0.1	80	797

DPR	PL	C/EASE	GEST L	SCS	PTAT	UDC	F & L
-0.9	3.9	2.5	-0.4	2.87	1.49	2.61	0.55



Vala Fomo MDouglas - PP

Australian Indices										Dec 2024
BPI	HWI	SI	ASI	Milk	Fat	Fat%	Prot	Prot%	Rel%	
414	396	675	161	44	35	0.47%	14	0.24%	77	

Dtr Fert	LiveW	SCC	M/Speed	Temp	Likeability
109	100	164	104	100	103

C Ease	Gest L	Feed S	Survival	Heat Tol	TYPE	MAMM
101	-4	-104	110	104	99	102

- PP sire with +2855 GTPI, 414 BPI and 3751 LPI
- +2.61 UDC +1.49 PTAT A2/A2

CONFORMATION		0 Dtrs	0 Herds	USDA/HA Genomic Evaluation		Dec 2024	
PTAT: 1.49	UDC: 2.61	FLC: 0.55			GTPI 2855		
Stature	Short				Tall	0.10	
Strength	Frail				Strong	0.02	
Body Depth	Shallow				Deep	-0.44	
Dairy Form	Tight Rib				Open Rib	-0.20	
Rump Angle	High				Sloped	-0.15	
Rump width	Narrow				Wide	1.19	
RL SV	Posty				Sickle	0.18	
RL RV	Hock-In				Straight	0.35	
Foot Angle	Low				Steep	0.62	
F & L Score	Low				High	0.58	
Fore Attachment	Loose				Strong	3.26	
Rear Udder Height	Low				High	2.90	
Rear Udder Width	Narrow				Wide	2.27	
Udder Cleft	Weak				Strong	0.85	
Udder Depth	Deep				Shallow	2.89	
Fore Teat Placement	Wide				Close	0.50	
Rear Teat Placement	Wide				Close	0.76	
Teat Length	Short				Long	-1.00	

Have you booked your **FRESH SEXED SEMEN** dates for your Spring 2024 joining programs?

Ultraplus™

Now is the ideal time to confirm your fresh sexed semen booking, so contact TLG today

Consider the advantages

- *Success stories continue to be told*
- *We manage the logistics so it is delivered on time*
- *Easily managed synchro programs*
- *Wide selection of quality Australian standing bulls*
- *Consistently delivering improved fertility*

For the last 3 years, throughout October and November we aim to offer fresh sexed semen to our clients daily. Working closely with TLG they have made this process seamless to provide commercial, high health and low stature bulls for the Maffra market and work out the logistics for smooth delivery.

Results are consistently within a couple of % of conventional semen, in some cases the fresh sexed has come out higher. Our clients love the ease and flexibility of the fresh sexed product from TLG.

Lyndsey Flemming, Quality Breeding Services, Gippsland

We have been using fresh sexed semen since it became available in Australia. We and our clients find it easy to use and enjoy the consistency of the conception rates.

We find that the conception rates are an improvement compared to using frozen product.

Jonathan Thomas, Nth East Genetics

**THE DEMAND FOR
FRESH SEXED IS INCREASING**
and so are the success stories...



BEACON-pp Vala Magicball Beacon - PP (Magicball / Jeronimo / Bandares)

A2 STATUS: A2/A2 Genetic Codes: TE, PP Haplotypes: HH1F,HH2F,HH3F,HH4F,HH5F,HH6F
 NASIS: TLGBEACON NAAB: 187H005636 HB: AUS2192579 DOB: 02/04/2022

SEXED \$55.00

RRP \$22.00



Vala Magicball Beacon-PP

BPI 422 67%R
HWI 460 62%R
SI 616 65%R

Conformation ABV(g)	
Overall Type	104
Mammary	100
Rump	103
Dairy Strength	94
Feet and Legs	104

HEALTH ABV (g) 12/24		
Cell Count	176	69
Survival	109	59
Feed Saved	15	44
Dtr Fertility	114	64
Calving Ease	102	83
Gest Length	-3	66
Heat Tol	102	48

PRODUCTION ABV (g) 12/24		
Milk	-713	78%R
Fat	32 kg	0.90%
Protein	3 kg	0.43%
ASI	148	78%R

WORKABILITIES	
Milking Speed	101
Temperament	102
Likability	102

CONFORMATION ABV (g) 0 Dtrs 0 Herds 64%Rel Dec 2024			
OVERALL TYPE	104	MAMMARY SYSTEM	100
Stature	103	Pin Width	97
Bone Quality	99	Pin Set	99
Angularity	93	Udder Texture	93
Muzzle Width	100	Udder Depth	106
Body Depth	93	Fore Attachment	102
Chest Width	97	Rear Att Height	107
Loin Strength	103	Rear Att Width	99
Foot Angle	101	Centre Ligament	94
Rear Set	97	Teat Placement (Front)	98
Rear Leg Rear View	101	Teat Placement (Rear)	96
		Teat Length	102

- PP sire with 422 BPI and 460 HWI A2/A2 sire
- Extreme fertility +114 & short gestation -3

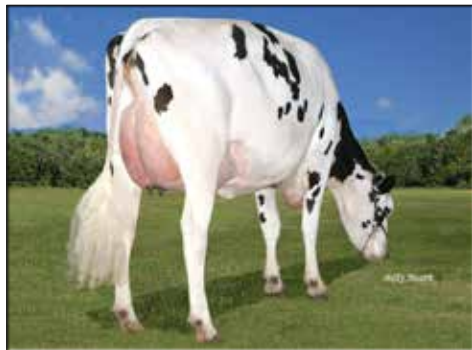
GONE-pp Coldsprings All-Gone-PP (Allday-P / Frazzled / Denver)

A2 STATUS: A2/A2 Genetic Codes: TE, PP Haplotypes: HH1F,HH2F,HH3F,HH4F,HH5F,HH6F
 NASIS: ALLGONE NAAB: 724H002025 HB: H08400003210109717 DOB: 18/06/2021

RRP \$24.00



USDA CDCB Genomic Index Dec 2024							
GTPI	MILK	FAT	%F	PROT	%P	Rel%	NM\$
2611	865	52	0.07	27	0	82	489
DPR	PL	C/EASE	GEST L	SCS	PTAT	UDC	F & L
-0.5	2	1.8	0.8	2.77	2.03	2.31	0.89



Cold Springs Basic 114477

Australian Indices Dec 2024									
BPI	HWI	SI	ASI	Milk	Fat	Fat%	Prot	Prot%	Rel%
331	367	526	89	416	29	0.16%	9	-0.04%	78
Dtr Fert	LiveW	SCC	M/Speed	Temp	Likeability				
110	102	168	100	98	101				
C Ease	Gest L	Feed S	Survival	Heat Tol	TYPE	MAMM			
102	1	-69	107	105	107	108			

- Imagine the udders on this PP sire
- Milk, calving ease, type and production in one

CONFORMATION 0 Dtrs 0 Herds USDA/HA Genomic Evaluation Dec 2024			
PTAT: 2.03	UDC: 2.31	FLC: 0.89	GTPI 2611
Stature	Short		Tall 2.07
Strength	Frail		Strong 0.83
Body Depth	Shallow		Deep 0.77
Dairy Form	Tight Rib		Open Rib 1.04
Rump Angle	High		Sloped -0.55
Rump width	Narrow		Wide 1.44
RL SV	Posty		Sickle 0.27
RL RV	Hock-In		Straight 0.97
Foot Angle	Low		Steep 1.13
F & L Score	Low		High 1.35
Fore Attachment	Loose		Strong 2.65
Rear Udder Height	Low		High 3.30
Rear Udder Width	Narrow		Wide 2.69
Udder Cleft	Weak		Strong 1.46
Udder Depth	Deep		Shallow 2.59
Fore Teat Placement	Wide		Close 0.95
Rear Teat Placement	Wide		Close 1.45
Teat Length	Short		Long -0.04

CARTEL

Emu Banks Cartel (Redcarpet / Balisto / Numero Uno)

A2 STATUS: A2/A2 Genetic Codes: TE Haplotypes: HH1F,HH2F,HH3F,HH4F,HH5F,HH6F
 NASIS: TLGCARTEL HB: AUS2146036 DOB: 28/03/2021

SEXED \$52.00

RRP \$20.00



Dam: Emu Banks Balisto Donatello VG87

BPI 370 69%R
HWI 438 64%R
SI 527 66%R

Conformation ABV(g)	
Overall Type	109
Mammary	104
Rump	103
Dairy Strength	101
Feet and Legs	100

HEALTH ABV (g) 12/24		
Cell Count	147	70
Survival	108	63
Feed Saved	-18	44
Dtr Fertility	116	66
Calving Ease	104	99
Gest Length	-5	99
Heat Tol	105	48

CONFORMATION ABV (g)	0 Dtrs	0 Herds	66%Rel	Dec 2024
OVERALL TYPE	109	MAMMARY SYSTEM	104	
Stature	97	Pin Width		99
Bone Quality	107	Pin Set		99
Angularity	98	Udder Texture		101
Muzzle Width	98	Udder Depth		106
Body Depth	99	Fore Attachment		105
Chest Width	101	Rear Att Height		104
Loin Strength	102	Rear Att Width		101
Foot Angle	98	Centre Ligament		100
Rear Set	101	Teat Placement (Front)		100
Rear Leg Rear View	96	Teat Placement (Rear)		96
		Teat Length		100

- +370 BPI +438 HWI
- +109 Type +104 Mammary +116 Dtr Fert
- A2/A2 and predominately black
- Continues to be a popular choice

PRODUCTION ABV (g) 12/24		
Milk	-581	79% R
Fat	14 kg	0.56%
Protein	4 kg	0.38%
ASI	106	79% R

WORKABILITIES	
Milking Speed	101
Temperament	100
Likability	102

LEITH-P

Vala Nacash Leith - P (Nacash / Polar / Duke)

A2 STATUS: A2/A2 Genetic Codes: TE, HP Haplotypes: HH1F,HH2F,HH3F,HH4F,HH5F,HH6F
 NASIS: TLGLEITH NAAB: 187H005560 HB: AUS2146004 DOB: 05/03/2021

RRP \$18.00



USDA CDCB Genomic Index								Dec 2024
GTPI	MILK	FAT	%F	PROT	%P	Rel%	NMS	
2593	593	60	0.14	36	0.07	80	512	

DPR	PL	C/EASE	GEST L	SCS	PTAT	UDC	F & L
0.4	2.6	2.7	0.4	2.82	1.3	1.24	0.04

- Combining BPI, TPI, fertility, A2/A2 & polled
- Predominately black with outstanding linear



Vala Nacash Leith-P

CONFORMATION	0 Dtrs	0 Herds	USDA/HA Genomic Evaluation	Dec 2024
PTAT: 1.3	UDC: 1.24	FLC: 0.04	GTPI 2593	
Stature	Short			Tall 1.27
Strength	Frail			Strong 0.66
Body Depth	Shallow			Deep 0.44
Dairy Form	Tight Rib			Open Rib 0.12
Rump Angle	High			Sloped 0.81
Rump width	Narrow			Wide 1.18
RL SV	Posty			Sickle 0.93
RL RV	Hock-In			Straight -0.16
Foot Angle	Low			Steep 0.35
F & L Score	Low			High 0.47
Fore Attachment	Loose			Strong 2.28
Rear Udder Height	Low			High 1.18
Rear Udder Width	Narrow			Wide 1.13
Udder Cleft	Weak			Strong 0.44
Udder Depth	Deep			Shallow 2.01
Fore Teat Placement	Wide			Close 0.97
Rear Teat Placement	Wide			Close 0.66
Teat Length	Short			Long 0.69

Australian Indices										Dec 2024
BPI	HWI	SI	ASI	Milk	Fat	Fat%	Prot	Prot%	Rel%	
385	386	650	144	195	19	0.16%	18	0.24%	79	

Dtr Fert	LiveW	SCC	M/Speed	Temp	Likeability
111	100	178	102	101	103

C Ease	Gest L	Feed S	Survival	Heat Tol	TYPE	MAMM
101	-1	-146	110	102	103	100

EMMANUEL

Summit View Captivating Emmanuel (Captivating / Einstein / Marius)

A2 STATUS: A2/A2 Genetic Codes: TE Haplotypes: HH1F,HH2F,HH3F,HH4F,HH5F,HH6F
 NASIS: TLGEMMANUEL NAAB: 187H005668 HB: AUS2203423 DOB: 19/08/2022

RRP \$16.00
 CONVENTIONAL PLUS25

USDA CDCB Genomic Index							Dec 2024
GTPI	MILK	FAT	%F	PROT	%P	Rel%	NM\$
2925	971	100	0.24	58	0.1	81	840
DPR	PL	C/EASE	GEST L	SCS	PTAT	UDC	F & L
-0.8	3.7	1.9	-1.5	2.73	1.44	1.58	0.04



Same family as Silverridge Duke Elsa

Australian Indices										Dec 2024
BPI	HWI	SI	ASI	Milk	Fat	Fat%	Prot	Prot%	Rel%	
429	394	677	203	-4	49	0.71%	15	0.29%	77	
Dtr Fert	LiveW	SCC	M/Speed	Temp	Likeability					
110	100	175	103	100	101					
C Ease	Gest L	Feed S	Survival	Heat Tol	TYPE	MAMM				
103	-5	-137	108	103	96	99				

Great value sire

Shorter gestation and calving ease A2/A2

CONFORMATION			0 Dtrs	0 Herds	USDA/HA Genomic Evaluation	Dec 2024
PTAT: 1.44	UDC: 1.58	FLC: 0.04				GTPI 2925
Stature	Short				Tall	1.92
Strength	Frail				Strong	0.75
Body Depth	Shallow				Deep	0.76
Dairy Form	Tight Rib				Open Rib	1.02
Rump Angle	High				Sloped	1.16
Rump width	Narrow				Wide	1.70
RL SV	Posty				Sickle	-1.22
RL RV	Hock-In				Straight	0.32
Foot Angle	Low				Steep	0.75
F & L Score	Low				High	0.50
Fore Attachment	Loose				Strong	1.61
Rear Udder Height	Low				High	1.78
Rear Udder Width	Narrow				Wide	2.38
Udder Cleft	Weak				Strong	2.17
Udder Depth	Deep				Shallow	1.86
Fore Teat Placement	Wide				Close	1.95
Rear Teat Placement	Wide				Close	2.40
Teat Length	Short				Long	-0.71

ELEVATION

Summit View RocknRoll Elevation (RocknRoll / Einstein / Marius)

A2 STATUS: A1/A2 Genetic Codes: TE Haplotypes: HH1F,HH2F,HH3F,HH4F,HH5F,HH6F
 NASIS: TLGELEVATION NAAB: 187H05710 HB: AUS2229105 DOB: 04/05/2023

RRP \$18.00
 CONVENTIONAL PLUS25

USDA CDCB Genomic Index							Dec 2024
GTPI	MILK	FAT	%F	PROT	%P	Rel%	NM\$
2981	1181	96	0.19	59	0.08	80	887
DPR	PL	C/EASE	GEST L	SCS	PTAT	UDC	F & L
0.7	4.3	2.2	-2.1	2.72	1.13	1.64	-0.09



Summit View Rocknroll Elevation

Australian Indices										Dec 2024
BPI	HWI	SI	ASI	Milk	Fat	Fat%	Prot	Prot%	Rel%	
515	536	897	228	330	49	0.50%	23	0.26%	78	
Dtr Fert	LiveW	SCC	M/Speed	Temp	Likeability					
116	100	173	103	102	104					
C Ease	Gest L	Feed S	Survival	Heat Tol	TYPE	MAMM				
102	-6	-65	110	97	101	103				

New silky black holstein sire

2981 GTPI 515 BPI +0.7 DPR +116 DFert

CONFORMATION			0 Dtrs	0 Herds	USDA/HA Genomic Evaluation	Dec 2024
PTAT: 1.13	UDC: 1.64	FLC: -0.09				GTPI 2981
Stature	Short				Tall	0.44
Strength	Frail				Strong	1.32
Body Depth	Shallow				Deep	0.25
Dairy Form	Tight Rib				Open Rib	-0.91
Rump Angle	High				Sloped	-0.45
Rump width	Narrow				Wide	0.91
RL SV	Posty				Sickle	-0.71
RL RV	Hock-In				Straight	-0.57
Foot Angle	Low				Steep	0.73
F & L Score	Low				High	0.14
Fore Attachment	Loose				Strong	2.22
Rear Udder Height	Low				High	1.34
Rear Udder Width	Narrow				Wide	1.83
Udder Cleft	Weak				Strong	1.29
Udder Depth	Deep				Shallow	1.62
Fore Teat Placement	Wide				Close	1.34
Rear Teat Placement	Wide				Close	1.71
Teat Length	Short				Long	-0.65

WIM TLG Howler Wim (Howler / Lundy / Palermo)

A2 STATUS: A2/A2 Genetic Codes: TE Haplotypes: HH1F,HH2F,HH3F,HH4F,HH5F,HH6F
 NASIS: TLGWIM HB: AUS2192519 DOB: 03/05/2022

RRP \$16.00

CONVENTIONAL PLUS20



TLG Howler Wim

PRODUCTION ABV (g) 12/24

Milk	37	78% R
Fat	21 kg	0.28%
Protein	13 kg	0.23%
ASI	129	78% R

WORKABILITIES

Milking Speed	100
Temperament	100
Likability	102

BPI 413 68%R

HWI 474 63%R

SI 703 65%R

Conformation ABV(g)

Overall Type	103
Mammary	100
Rump	103
Dairy Strength	98
Feet and Legs	101

HEALTH ABV (g) 12/24

Cell Count	178	69
Survival	109	62
Feed Saved	-2	44
Dtr Fertility	115	65
Calving Ease	103	70
Gest Length	-4	62
Heat Tol	105	48

CONFORMATION ABV (g)	0 Dtrs	0 Herds	65%Rel	Dec 2024
OVERALL TYPE	103	MAMMARY SYSTEM	100	
Stature	101	Pin Width	103	
Bone Quality	94	Pin Set	101	
Angularity	96	Udder Texture	97	
Muzzle Width	103	Udder Depth	103	
Body Depth	97	Fore Attachment	102	
Chest Width	102	Rear Att Height	100	
Loin Strength	103	Rear Att Width	99	
Foot Angle	102	Centre Ligament	102	
Rear Set	97	Teat Placement (Front)	98	
Rear Leg Rear View	99	Teat Placement (Rear)	103	
		Teat Length	96	

- Combining BPI with high daughter fertility
- High ranking HWI sire +474 A2/A2

TURBO Wilara Turbo (Endgame / Delta Lambda / Doorman)

A2 STATUS: A1/A2 Genetic Codes: TE Haplotypes: HH1F,HH2F,HH3F,HH4F,HH5F,HH6F
 NASIS: TLGTURBO HB: AUS2133034 DOB: 16/10/2020

RRP \$18.00

CONVENTIONAL PLUS20



Same family as Gorbro Atwood Tiffany EX91-1E

PRODUCTION ABV (g) 12/24

Milk	11	79% R
Fat	31 kg	0.44%
Protein	21 kg	0.39%
ASI	205	79% R

WORKABILITIES

Milking Speed	102
Temperament	102
Likability	105

BPI 473 69%R

HWI 444 64%R

SI 797 66%R

Conformation ABV(g)

Overall Type	107
Mammary	106
Rump	107
Dairy Strength	100
Feet and Legs	107

HEALTH ABV (g) 12/24

Cell Count	174	69
Survival	110	63
Feed Saved	-130	45
Dtr Fertility	109	66
Calving Ease	100	90
Gest Length	-1	92
Heat Tol	98	48

CONFORMATION ABV (g)	0 Dtrs	0 Herds	66%Rel	Dec 2024
OVERALL TYPE	107	MAMMARY SYSTEM	106	
Stature	104	Pin Width	106	
Bone Quality	104	Pin Set	106	
Angularity	96	Udder Texture	101	
Muzzle Width	98	Udder Depth	104	
Body Depth	99	Fore Attachment	103	
Chest Width	103	Rear Att Height	110	
Loin Strength	101	Rear Att Width	104	
Foot Angle	108	Centre Ligament	102	
Rear Set	96	Teat Placement (Front)	96	
Rear Leg Rear View	105	Teat Placement (Rear)	102	
		Teat Length	98	



Wilara TURBO

- Solid Type and production from famous Tiffanys
- High daughter fertility 109

DINGO

Windy Ways CCC Dingo (Roulette / Galaxies EX95 / Headline EX90)

A2 STATUS: A2/A2 Haplotypes: JH1F
 NASIS: TLGDINGO HB: AUS814027 DOB: 02/03/2023

NEW SEXED \$60.00 RRP \$24.00
Ultraplus CONVENTIONAL PLUS20

PRODUCTION ABV 12/24		
Milk	493	77% R
Fat	21 kg	0.10%
Protein	18 kg	0.02%
ASI	122	77% R

BPI 305 65%R

HWI 240 56%R

SI 596 61%R

Conformation ABV(g)	
Overall Type	109
Mammary	112

WORKABILITIES	
Milking Speed	100
Temperament	103
Likability	105

HEALTH ABV (g) 12/24		
Cell Count	142	67%
Survival	108	54%
Feed Saved	-51	32%
Dtr Fertility	98	53%
Heat Tol	99	39%

CONFORMATION ABV (g)	0 Dtrs	0 Herds	59% Rel	Dec 2024
OVERALL TYPE	109	MAMMARY SYSTEM	112	
Stature	106	Pin Width	102	
Bone Quality	105	Pin Set	102	
Angularity	108	Udder Texture	107	
Muzzle Width	105	Udder Depth	105	
Body Depth	101	Fore Attachment	106	
Chest Width	99	Rear Att Height	107	
Loin Strength	101	Rear Att Width	106	
Body Length	103	Centre Ligament	113	
Rump Length	101	Teat Placement (Front)	105	
Foot Angle	98	Teat Placement (Rear)	107	
Rear Set	98	Teat Length	100	
Rear Leg Rear View	99			

- Imagine the potential - A Roulette son from the famous Galaxies Dawn
- Dingo is a nice individual that has been a popular choice this winter



Dam: Windy Ways Galaxies Dawn EX95



TLGDINGO



EXQUISITE - P Wallacedale Exquisite-PO (Goldband / Lemonhead EX92 / Tbone EX90)

A2 STATUS: A2/A2 Genetic Codes: HP Haplotypes: JH1F
 HB: AUS814935 NASIS: TLGEXQUISITE DOB: 21/02/2023

SEXED \$55.00 RRP \$20.00

UltraPlus CONVENTIONAL PLUS26



Dam: Wallacedale Lemon Melaine - EX92

BPI 286 67%R
HWI 237 56%R
SI 604 61%R

Conformation ABV(g)	
Overall Type	105
Mammary	104

PRODUCTION ABV 12/24		
Milk	313	77% R
Fat	22 kg	0.10%
Protein	17 kg	0.14%
ASI	137	77% R

HEALTH ABV (g) 12/24		
Cell Count	114	66%
Survival	110	55%
Feed Saved	-16	32%
Dtr Fertility	100	54%
Heat Tol	97	39%

WORKABILITIES	
Milking Speed	104
Temperament	106
Likability	106

CONFORMATION ABV (g) 0 Dtrs 0 Herds 60% Rel Dec 2024			
OVERALL TYPE	105	MAMMARY SYSTEM	104
Stature	101	Pin Width	110
Bone Quality	103	Pin Set	104
Angularity	105	Udder Texture	107
Muzzle Width	99	Udder Depth	102
Body Depth	101	Fore Attachment	102
Chest Width	101	Rear Att Height	104
Loin Strength	109	Rear Att Width	102
Body Length	101	Centre Ligament	100
Rump Length	101	Teat Placement (Front)	103
Foot Angle	106	Teat Placement (Rear)	102
Rear Set	99	Teat Length	103
Rear Leg Rear View	101		

- Goldband-P son from the breed leading Melaine's
- +105 Type, +104 Mammary, 286 BPI, A2/A2 and Heterozygous polled jersey

SONGSIDE Miami Songside-ET (Woodside / Vanahlem EX92 / Tbone VG85 2yrs)

NEW

A2 STATUS: A2/A2 Haplotypes: JH1F
 NASIS: TLGSONGSIDE HB: AUS822422 DOB: 03/09/2022

SEXED \$55.00 RRP \$22.00

UltraPlus CONVENTIONAL PLUS26



Dam: Miami Vanahlem Song 4608 EX92

BPI 329 68%R
HWI 255 57%R
SI 675 62%R

Conformation ABV(g)	
Overall Type	108
Mammary	112

PRODUCTION ABV 12/24		
Milk	263	76% R
Fat	21 kg	0.13%
Protein	21 kg	0.25%
ASI	162	76% R

HEALTH ABV (g) 12/24		
Cell Count	116	65%
Survival	108	57%
Feed Saved	-7	33%
Dtr Fertility	97	57%
Heat Tol	93	39%

WORKABILITIES	
Milking Speed	104
Temperament	106
Likability	106

CONFORMATION ABV (g) 0 Dtrs 0 Herds 62% Rel Dec 2024			
OVERALL TYPE	108	MAMMARY SYSTEM	112
Stature	100	Pin Width	101
Bone Quality	104	Pin Set	104
Angularity	106	Udder Texture	109
Muzzle Width	99	Udder Depth	104
Body Depth	102	Fore Attachment	108
Chest Width	99	Rear Att Height	106
Loin Strength	102	Rear Att Width	105
Body Length	98	Centre Ligament	107
Rump Length	100	Teat Placement (Front)	111
Foot Angle	99	Teat Placement (Rear)	109
Rear Set	103	Teat Length	102
Rear Leg Rear View	102		

- New release jersey sire with a lot to offer
- +108 Type, +112 Mammary backed by the strong deep "Song" cow family

GRAYSON-pp

Tog Grayson-PP (Winthrop-P / Obsidian-P / News)

A2 STATUS: A2/A2 Genetic Codes: PP Haplotypes: JH1F
HB: JE840003251554533 NASIS: GXGRAYSON DOB: 20/08/2022

RRP \$18.00

CONVENTIONAL PLUS20



Tog Grayson-PP

Australian Indices Dec 2024

BPI	HWI	SI	ASI	Milk	Fat	Fat%	Prot	Prot%	Rel%
213	204	502	109	194	17	0.13	13	0.14	71

Dtr Fert	Mast	SCC	M/Speed	Temp	Likeability
100	110	150	100	101	103

Liveweight	Gest L	Feed S	Survival	Heat Tol	TYPE	MAMM
93	-2	97	105	97	91	92

- #1 JPI homozygous polled bull (No JX)
- Outcross sire line and high JUI +15.45

USDA CDCB Genomic Index Dec 2024

GJPI	MILK	FAT	%F	PROT	%P	Rel%	NM\$
145	318	38	0.11	31	0.10	76	658

CONFORMATION 0 Dtrs 0 Herds USDA/HA Genomic Evaluation Dec 2024

PTAT: 0.70 JUI: 15.45 GJPI 146

Stature	Short					Tall	-1.50
Strength	Frail					Strong	-0.50
Dairy Form	Tight Rib					Open Rib	+0.40
Rump Angle	High					Sloped	-1.80
Rump Width	Narrow					Wide	-0.70
RL SV	Posty					Sickle	-0.70
Foot Angle	Hock-In					Straight	+0.50
Fore Attachment	Loose					Strong	+1.30
Rear Udder Height	Low					High	+1.30
Rear Udder Width	Narrow					Wide	+0.60
Udder Cleft	Weak					Strong	+0.70
Udder Depth	Deep					Shallow	+0.80
Fore Teat Placement	Wide					Close	-0.20
Rear Teat Placement	Wide					Close	+0.30
Teat Length	Short					Long	-1.30

-1.5 -1.0 -0.5 0 0.5 1.0 1.5

IRYMPLE

Loxleigh Roulette Irymple (Roulette / Valentino EX90 / Navarian EX91)

A2 STATUS: A2/A2 Haplotypes: JH1F
HB: AUS808583 NASIS: TLGIRYMPLE DOB: 21/09/2022

SEXED \$55.00 RRP \$22.00

Ultraplus

CONVENTIONAL PLUS20



Same family as Loxleigh Badger Iris 4 - EX94

BPI	349	68%R
HWI	266	56%R
SI	707	62%R

Conformation ABV(g)	
Overall Type	111
Mammary	110

PRODUCTION ABV 12/24

Milk	539	77% R
Fat	32 kg	0.06%
Protein	24 kg	0.12%
ASI	182	77% R

WORKABILITIES

Milking Speed	102
Temperament	104
Likability	106

HEALTH ABV (g) 12/24

Cell Count	121	67%
Survival	109	56%
Feed Saved	-85	33%
Dtr Fertility	100	55%
Heat Tol	97	39%

CONFORMATION ABV (g) 0 Dtrs 0 Herds 61% Rel Dec 2024

OVERALL TYPE	111	MAMMARY SYSTEM	110
Stature	107	Pin Width	108
Bone Quality	104	Pin Set	103
Angularity	108	Udder Texture	106
Muzzle Width	109	Udder Depth	101
Body Depth	102	Fore Attachment	102
Chest Width	103	Rear Att Height	105
Loin Strength	102	Rear Att Width	108
Body Length	106	Centre Ligament	109
Rump Length	103	Teat Placement (Front)	107
Foot Angle	105	Teat Placement (Rear)	109
Rear Set	98	Teat Length	99
Rear Leg Rear View	97		

- Roulette son from the famous "Iris" family
- +111 Type, +110 Mammary, Wide sloped rumps



BIGTOP

Bushlea Bigtop (Craze / Valentino EX92 / Nathan EX94)

A2 STATUS: A2/A2 Haplotypes: JH1F
NASIS: TLGBIGTOP NAAB: 187JE05595 HB: AUS798071 DOB: 11/05/2021

SEXED \$52.00
Ultraplus

RRP \$18.00
CONVENTIONAL PLUS30



- Incredible breed leading type +2.00 PTAT
- Increased further to +21.5 JUI

USDA CDCB Genomic Index							Dec 2024
GJPI	MILK	FAT	%F	PROT	%P	Rel%	NM\$
65	94	21	0.08	6	0.01	76	230
DPR	PL	SCS	GEST L	HCR	CCR	PTAT	JUI
-0.2	2.8	3.02	-2	0.2	0.6	2.00	21.5

CONFORMATION		0 Dtrs	0 Herds	USDA/HA Genomic Evaluation		Dec 2024
PTAT: 2.00		JUI: 21.5				GJPI 65
Stature	Short					+2.00
Strength	Frail					+0.50
Dairy Form	Tight Rib					+2.10
Rump Angle	High					-0.10
Rump Width	Narrow					+0.80
RL SV	Posty					-0.30
Foot Angle	Hock-In					+1.10
Fore Attachment	Loose					+1.70
Rear Udder Height	Low					+3.00
Rear Udder Width	Narrow					+2.00
Udder Cleft	Weak					+1.80
Udder Depth	Deep					+1.80
Fore Teat Placement	Wide					+1.40
Rear Teat Placement	Wide					+1.00
Teat Length	Short					+1.80

Australian Indices										Dec 2024
BPI	HWI	SI	ASI	Milk	Fat	Fat%	Prot	Prot%	Rel%	
277	208	552	107	344	26	0.14	12	0.01	79	
Dtr Fert	Mast	SCC	M/Speed	Temp	Likeability					
96	103	124	102	106	107					
Liveweight	Gest L	Feed S	Survival	Heat Tol	TYPE	MAMM				
103	-5	-42	111	98	107	111				

- Backed with 8 generations of EX dams
- Continuing to have international demand
- A2/A2

ACHIEVE MORE CALVES TOGETHER

Discover the features and advantages

- ▶ 98%+ retention rates*
- ▶ Easy to use
- ▶ Most environmentally-friendly device on the market
- ▶ Smallest progesterone device on the market
- ▶ Low dose option for heifers
- ▶ Only device on the market with a reuse claim
- ▶ Reload and blank pods available
- ▶ Proven cow comfort*
- ▶ Unrivalled customer service & support

Repro360.com.au

*Data on file.
Cue-Mate® is a registered trademark of Vetoquinol.

Repro 360°
by Vetoquinol



Are you looking for
VALUE OPTIONS?

Holstein Value Sires

TLGCHILLI - PP	\$16.00	- A2A2, PP, wider teat placement, fertility
TLGLENN - P RDC	\$16.00	- A2A2, calving ease, shorter gestation, nice ASI
TLGBEAMER - P	\$16.00	- A2A2, wider teat placement, fertility
TLGANSWER - PP	\$14.00	- PP, positive milk, wider teat placement
TLGSALOM - P	\$14.00	- Excellent conformation, positive milk, nice ASI
TLGBRINX - P	\$14.00	- Positive milk, fertility, wider teat placement
TLGBOUYANCY - P	\$14.00	- Fertility, longer teats, nice type
TLGLARK	\$14.00	- High DPR, nice udders, A2A2
TLGEPIC	\$16.00	- High Type and mammary, A2A2, positive milk
TLGMOHAWK	\$14.00	- High ASI, smaller stature, calving ease
TLGENCHANTER	\$14.00	- Smaller stature, fertility, calving ease
EMMETT - P	\$14.00	- A2A2, high type, positive milk, longer teats
ESCHER - PP	\$16.00	- High TPI, PP, high type & mammary, positive milk

Jersey Value Sires

TLGDEPOLE - P	\$14.00	- Nice type and mammary, fertility, polled
TLGQANTAS	\$14.00	- Outcross, fertility, A2A2, teat length
TLGVALBONE	\$12.00	- Positive milk, teat length
TLGLEMONPEEL - P	\$16.00	- Outcross pedigree



The highest levels of industry accreditation ensure quality outcomes.

Delivering world class products and services since 1989.

At the forefront of animal genetics and reproduction technology.

Offering a quality range of dairy sires for your next joining period.

PHOTO BY BRAD CULLEN

TLG offer a wide range of professional services:

- ⦿ Semen Collection
- ⦿ Sexed Semen Collections
- ⦿ Storage & Despatch
- ⦿ ET and IVF Technology
- ⦿ Import & Export
- ⦿ Genomic & A2 Testing



Sales Manager Darren Fletcher
Phone: 0447 441 422 Email: sales@tlg.com.au
4969 Princes Hwy, Camperdown Victoria 3260
Phone: 613 5593 2016 Email: tlg@genaust.com.au www.tlg.com.au